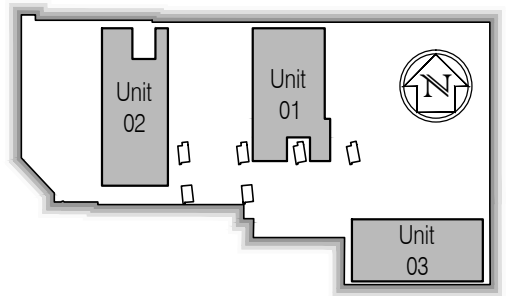


NOTES: Do not scale this drawing. All dimensions to be checked on site prior to commencement or manufacture.

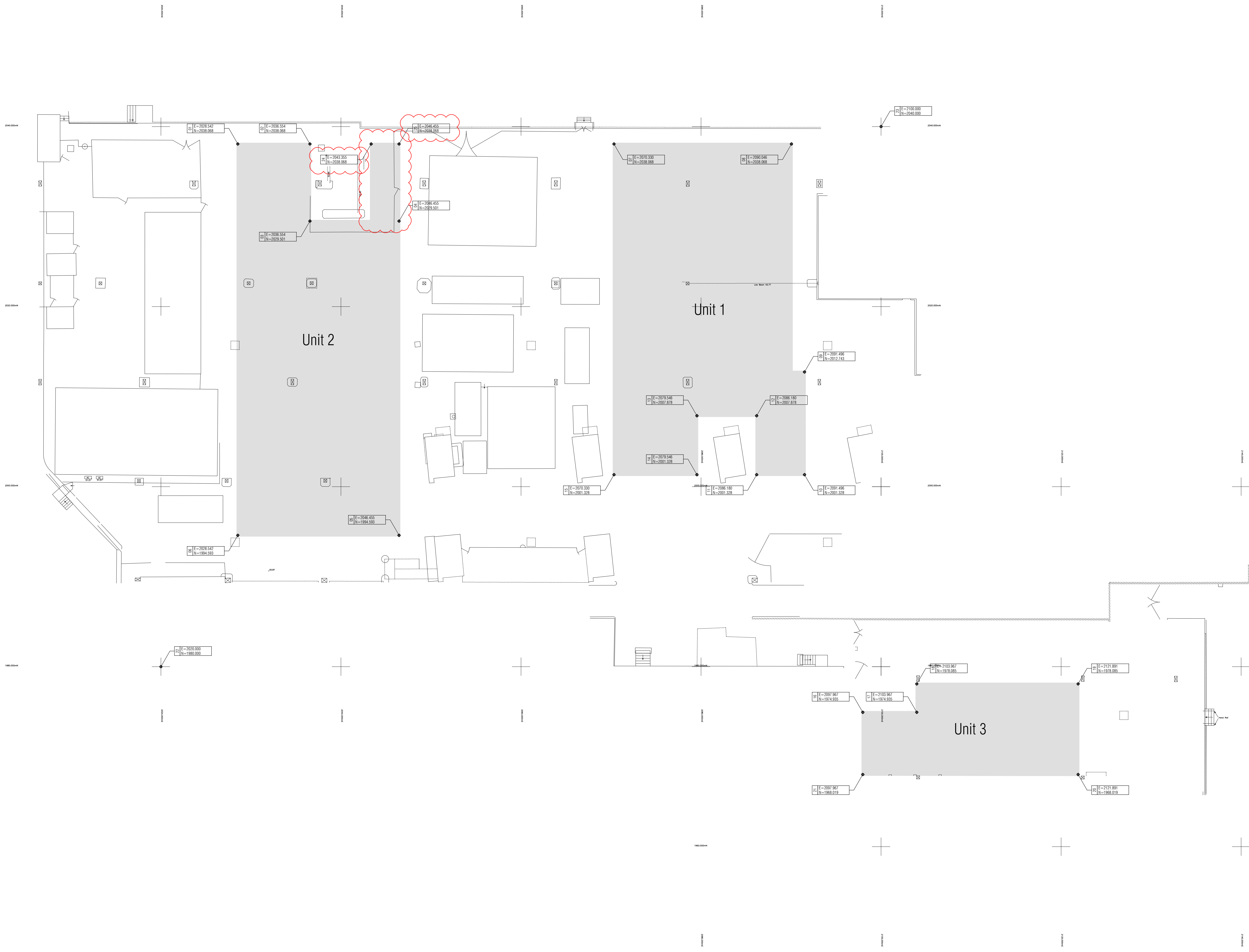
Key Plan (nts)



All existing building fabric, services, structural steelwork, etc. shown indicative only acquired from McDL Surveys Ltd information

All coordinates to grid intersections NOT building corners

DES	EAST-1	NORTH-1
01	2028.542	2038.068
02	2036.554	2038.068
03	2036.554	2029.501
04	2046.455	2029.501
05	2046.455	1994.593
06	2028.542	1994.593
07	2070.330	2038.068
08	2090.046	2038.068
09	2091.496	2012.743
10	2091.496	2001.328
11	2086.180	2001.328
12	2086.180	2007.878
13	2079.546	2007.878
14	2079.546	2001.328
15	2070.330	2001.328
16	2091.967	1974.935
17	2103.967	1974.935
18	2103.967	1978.085
19	2121.891	1978.085
20	2121.891	1968.019
21	2091.967	1968.019
22	2090.046	1968.019
23	2100.000	2040.000
24	2043.355	2038.068
25	2046.455	2038.068



CONSTRUCTION ISSUE

Rev	Date	By	CHK	Comment
04	22.11.10	JAS	AC	Issued for Construction
03	19.11.10	JAS	AC	Unit 2 layout amended + co-ord's updated
02	15.10.10	RKC	JAS	Dock leveller and platform revised.
01	08.10.10	RKC	JAS	Issued For Tender

BRINGING IDEAS TO LIFE

FRANKHAM

Frankham Consultancy Group Limited
 21 Perryman Road
 Hayward Heath RH16 3TP
 t01444 444000 f01444 455642
 enquiry@frankham.com
 www.frankham.com

Client

Project Title

Euston Station
 Parcel Deck
 Rail Gourmet Facility

Drawing Title

Setting Out Plan

Drawn by: RKC	Scale: 1:200@A1	Date: 07.10.10
Designed by: FCG	Checked by: JAS	Approved by: AC

File Ref.: X:\FRANKHAM\CGI\440272\ESTON\ARCH\08_BLDG_AND_SITE_PLAN_20101114.dwg 20.06.11.14.24.28

Drawing No. 440272-A-001	Rev. 04
-----------------------------	------------