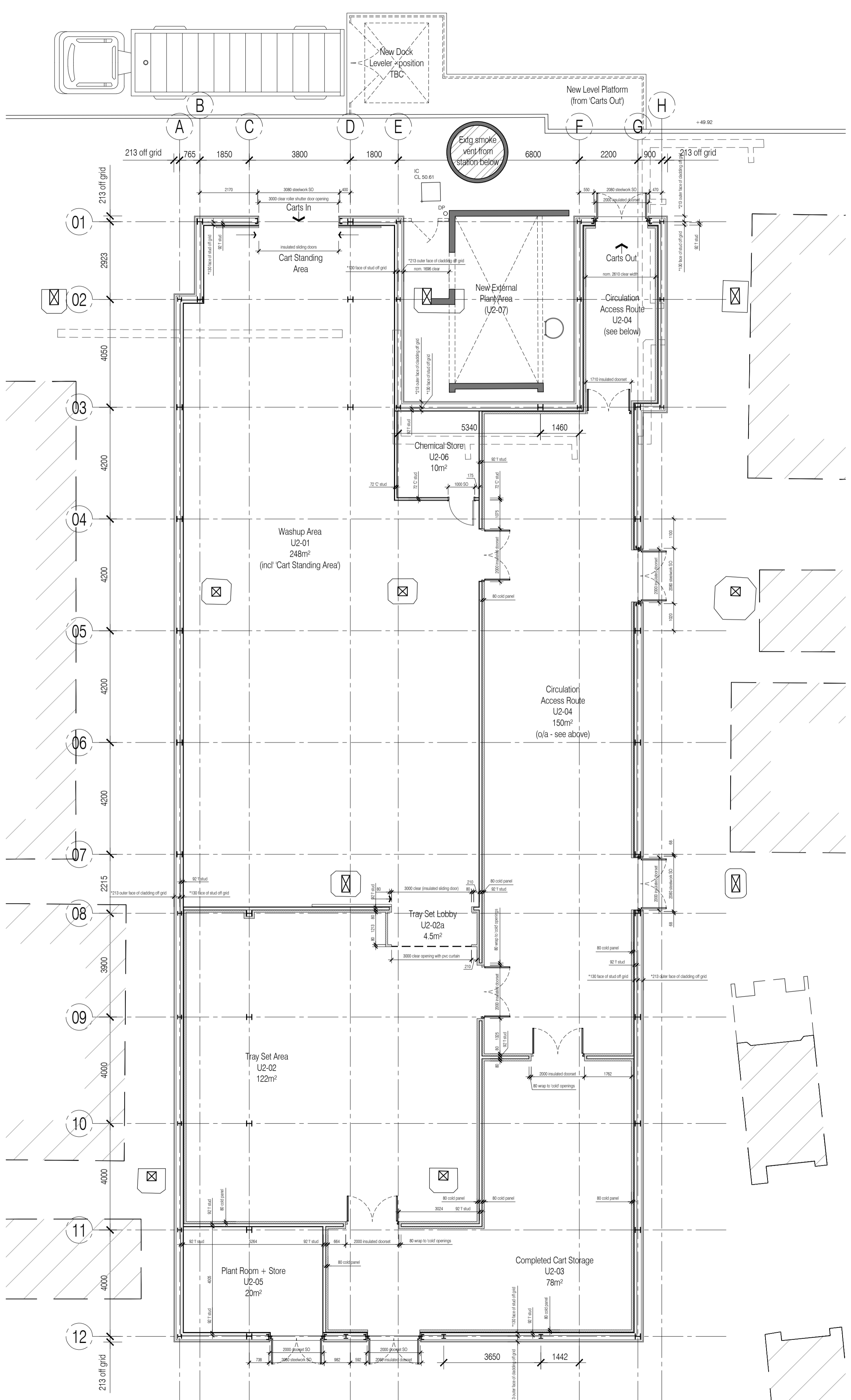
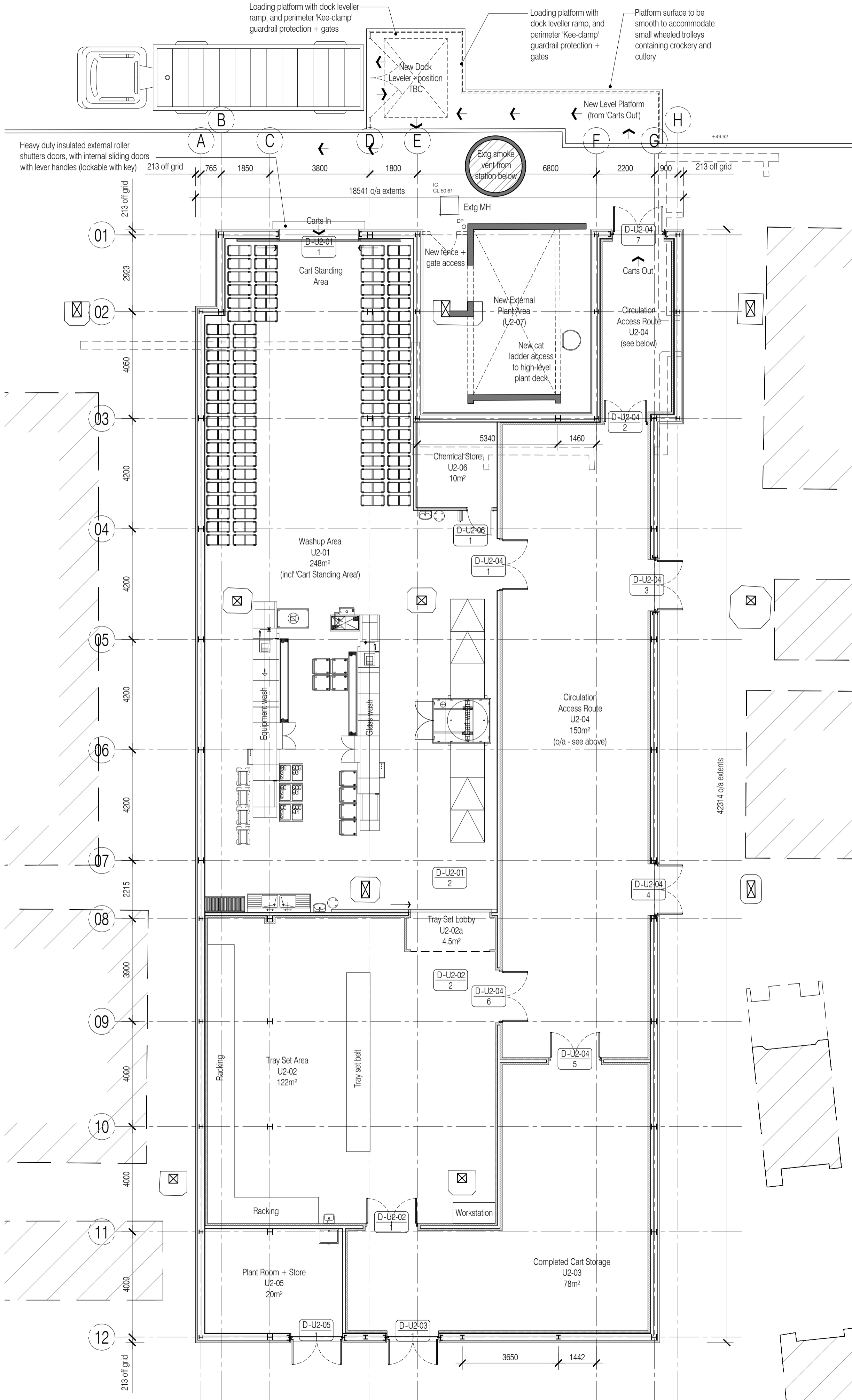
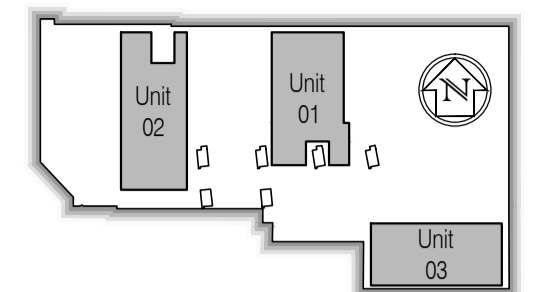


NOTES: Do not scale this drawing. All dimensions to be checked on site prior to commencement or manufacture.

Key Plan (mts)



CONSTRUCTION ISSUE

Rev	Date	By	Chk	Comment
09	10.02.11	JAS	AC	Re-drawn to suit latest structural constraints
08	22.11.10	JAS	AC	Issued for Construction
07	19.11.10	JAS	AC	Door reference added - D-U2-04-7
06	12.11.10	JAS	AC	U2-04 corridor extension incorporated.
05	15.10.10	RKC	JAS	Dock leveller and platform revised.
04	08.10.10	RKC	JAS	Issued for Tender.
03	05.10.10	JAS	RKC	Setting-out plan added + general updates
02	29.09.10	RKC	JAS	Sheets renumbered, refs added, Gen update
01	22.09.10	JAS	AC	Existing structure/areas/set-out/detail added

BRINGING IDEAS TO LIFE

FRANKHAM

Frankham Consultancy Group Limited
 21 Perrymount Road
 Haywards Heath RH16 3TP
 t 01444 444900 f 01444 455642
 enquiry@frankham.com
 www.frankham.com

Client

Project Title

Euston Station
 Parcel Deck
 Rail Gourmet Facility

Drawing Title

General Arrangement + Setting-out Plan
 Ground Floor
 Unit 02

Drawn by: RKC	Scale: 1:100@A1	Date: 13.09.10
Designed by: FCG	Checked by: JAS	Approved by: AC

File Ref.: X:\FRANKHAM\CGH\2010\ESTON\ARCH\05_196_U2020A.PLAN AND GA 440272-A-120-01.dwg	20.06.11.14.24.30
Drawing No. 440272-A-120	Rev. 09