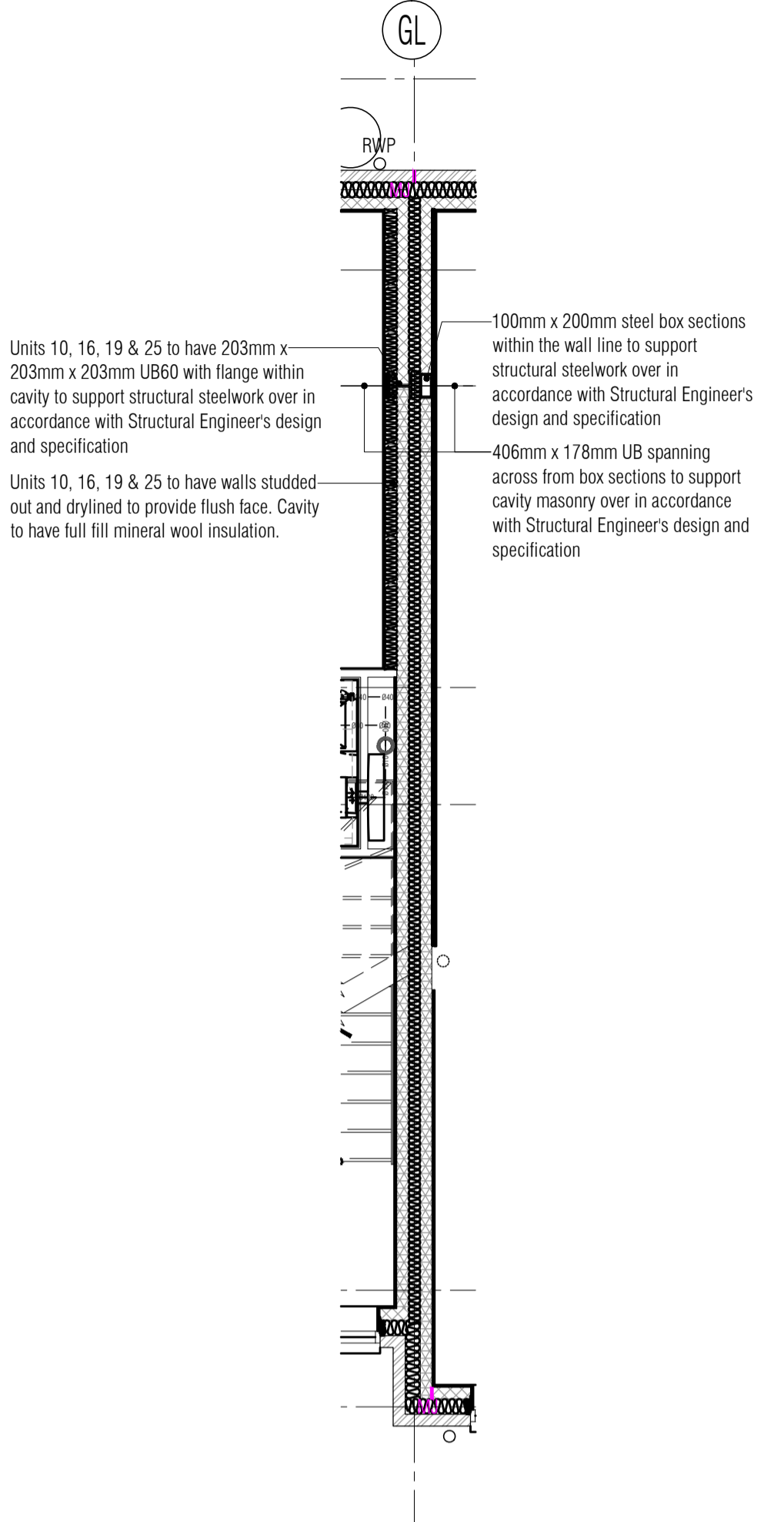
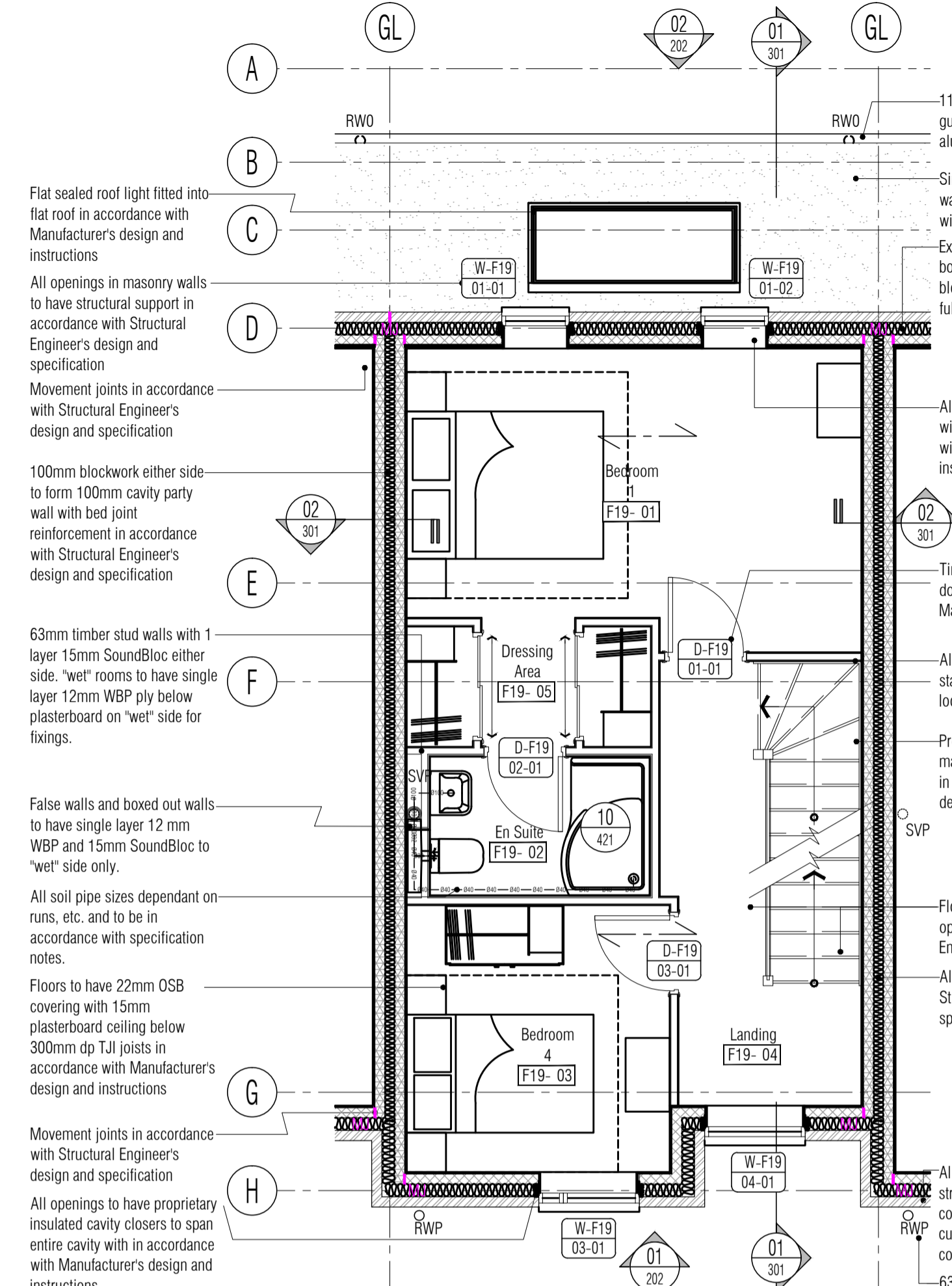


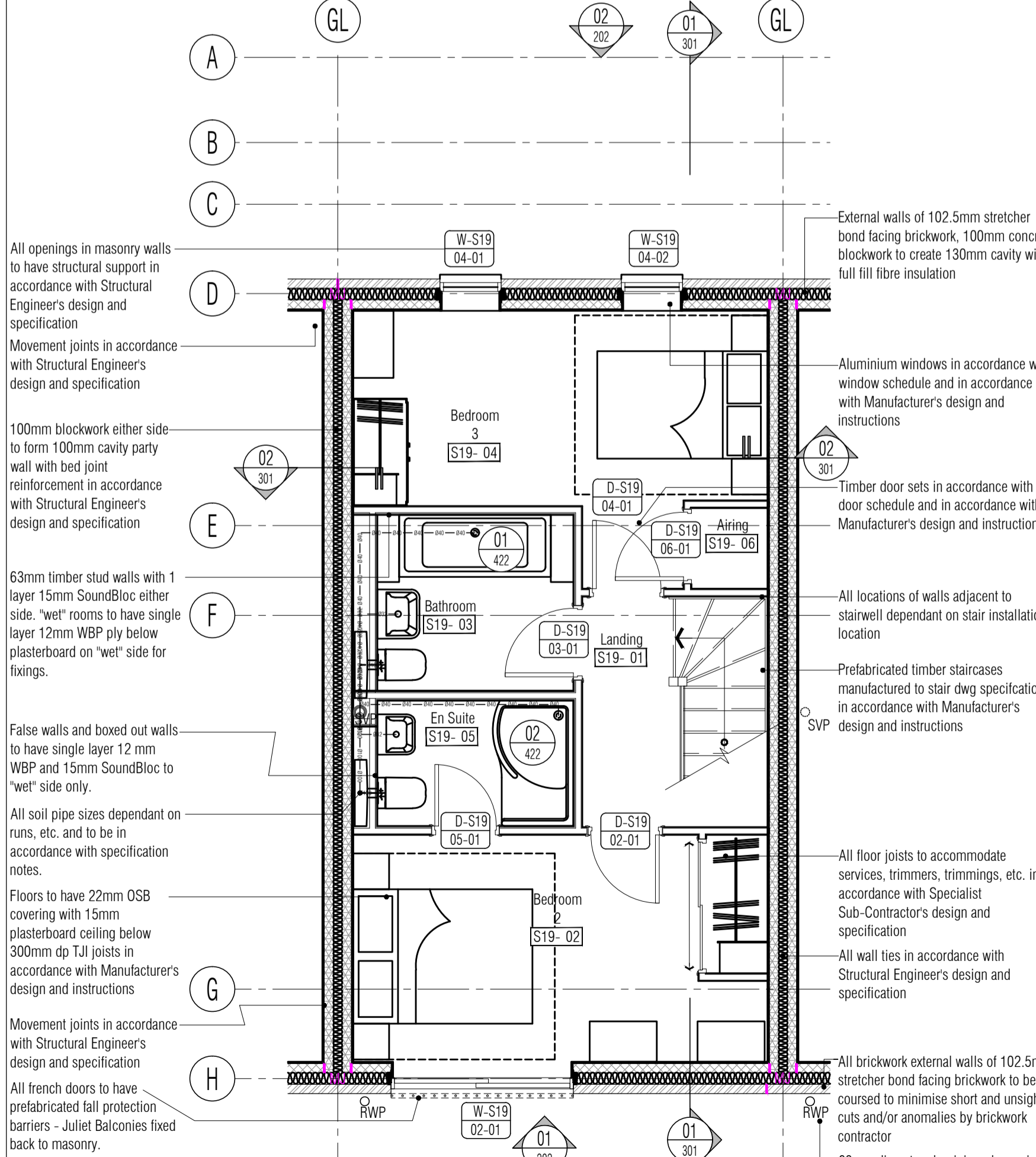
01 Ground Floor General Arrangement Plan - Type 1 - 4 Bed Mid-Terrace
Scale: 1:50
Plots 19 - 24 & 10
Plots 11 - 16 & 25 (handed)



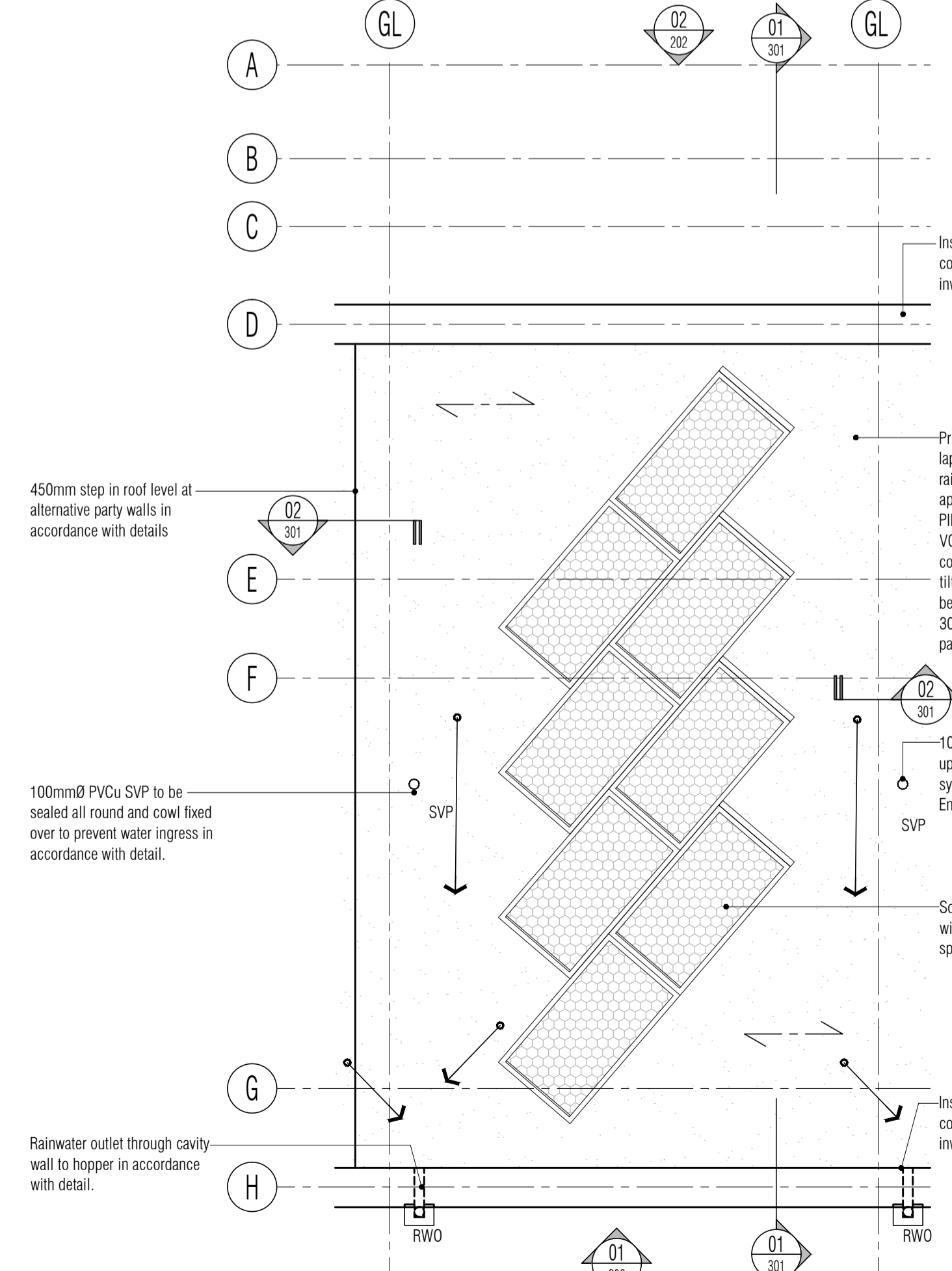
02 Ground Floor Flank Wall Plan Units 11, 17, 20 & 26
Scale: 1:50



03 First Floor General Arrangement Plan - Type 1 - 4 Bed Mid-Terrace
Scale: 1:50
Plots 19 - 24 & 10
Plots 11 - 16 & 25 (handed)



04 Second Floor General Arrangement Plan - Type 1 - 4 Bed Mid-Terrace
Scale: 1:50
Plots 19 - 24 & 10
Plots 11 - 16 & 25 (handed)



05 Roof General Arrangement Plan - Type 1 - 4 Bed Mid-Terrace
Scale: 1:50
Plots 19 - 24 & 10
Plots 11 - 16 & 25 (handed)

- CONTRACTOR IS RESPONSIBLE FOR ALL SETTING OUT AND MUST CHECK DIMENSIONS ON SITE BEFORE WORK IS PUT IN HAND
- WRITTEN DIMENSIONS ONLY TO BE TAKEN THIS DRAWING MUST NOT BE SCALED
- ARCHITECT TO BE IMMEDIATELY NOTIFIED OF SUSPECTED OMISSIONS OR DISCREPANCIES

REVISIONS	DATE	BY
ISSUED FOR CONSTRUCTION	17.05.16	RKC
CL Gen. revs	24.05.16	RKC
CL Bathrooms revd, layouts changed	20.06.16	RKC
CL Robes changed spec	06.07.16	RKC
CL Stair revd	14.07.16	RKC
CL Markup revs	22.07.16	RKC

Wall Types Legend

	Type A: External Wall. 102.5mm stretcher bond facing brickwork with 10mm mortar joints, 130mm full fill blown mineral wool fibre insulation, 100mm stretcher bond light weight concrete blockwork with 10mm mortar joints, finished internally with 15mm SoundBloc plasterboard on 10mm dabs
	Type B: Internal Party Wall. 100mm stretcher bond lightweight blockwork with 10mm mortar joints with bed reinforcement, 100mm full fill blown mineral wool fibre insulation, 100mm stretcher bond light weight concrete blockwork with 10mm mortar joints. Each side internally finished with 15mm SoundBloc plasterboard on 10mm dabs
	Type C: Internal Party Wall. 100mm stretcher bond lightweight blockwork with 10mm mortar joints, 100mm full fill blown mineral wool fibre insulation, 100mm stretcher bond light weight concrete blockwork with 10mm mortar joints. Each side internally finished with 15mm SoundBloc plasterboard on 10mm dabs
	Type D: Internal Timber Stud Wall. 63mm x 48mm timber studs at 400mmc with 15mm SoundBloc each side
	Type E: Internal Timber Stud Wall to bathrooms. 63mm x 48mm timber studs at 400mmc with 1 layer 12mm WBP ply to the "wet" side and 15mm SoundBloc each side
	Type G: Internal Services Boxing Stud Wall. 63mm x 48mm timber stud at 400mmc with 1 layer 12mm WBP ply to the "wet" side and 15mm SoundBloc one side
	Type H: Internal Timber Stud Wall. 63mm x 48mm timber studs at 400mmc with 1 layer 12mm WBP ply to the "wet" side and 15mm SoundBloc one side

Opening Reference Legend

	Denotes opening type: Door, Window, Screen		Denotes floor level and unit/plot reference n°
	Denotes room number		Denotes opening n°

ISSUED FOR CONSTRUCTION

RDJW

ARCHITECTS



RDJW ARCHITECTS LIMITED
QUIN HOUSE . 9-11 EAST PARK CRAWLEY . WEST SUSSEX . RH10 6AN
TEL: 01293 404300 . FAX: 01293 404299
EMAIL: info@rdjwarchitects.co.uk
WEBSITE: www.rdjwarchitects.co.uk

PROJECT		
Housing Development Springfield Hospital Hebdon Road Tooting		
Proposed Type 2 4 Bed Mid-Terrace General Arrangement Plans		
DATE	30.09.15	SCALE 1:50 @ A1
DRAWN	RKC	DRG. NO. 4720-122
CHECKED		REV. C6