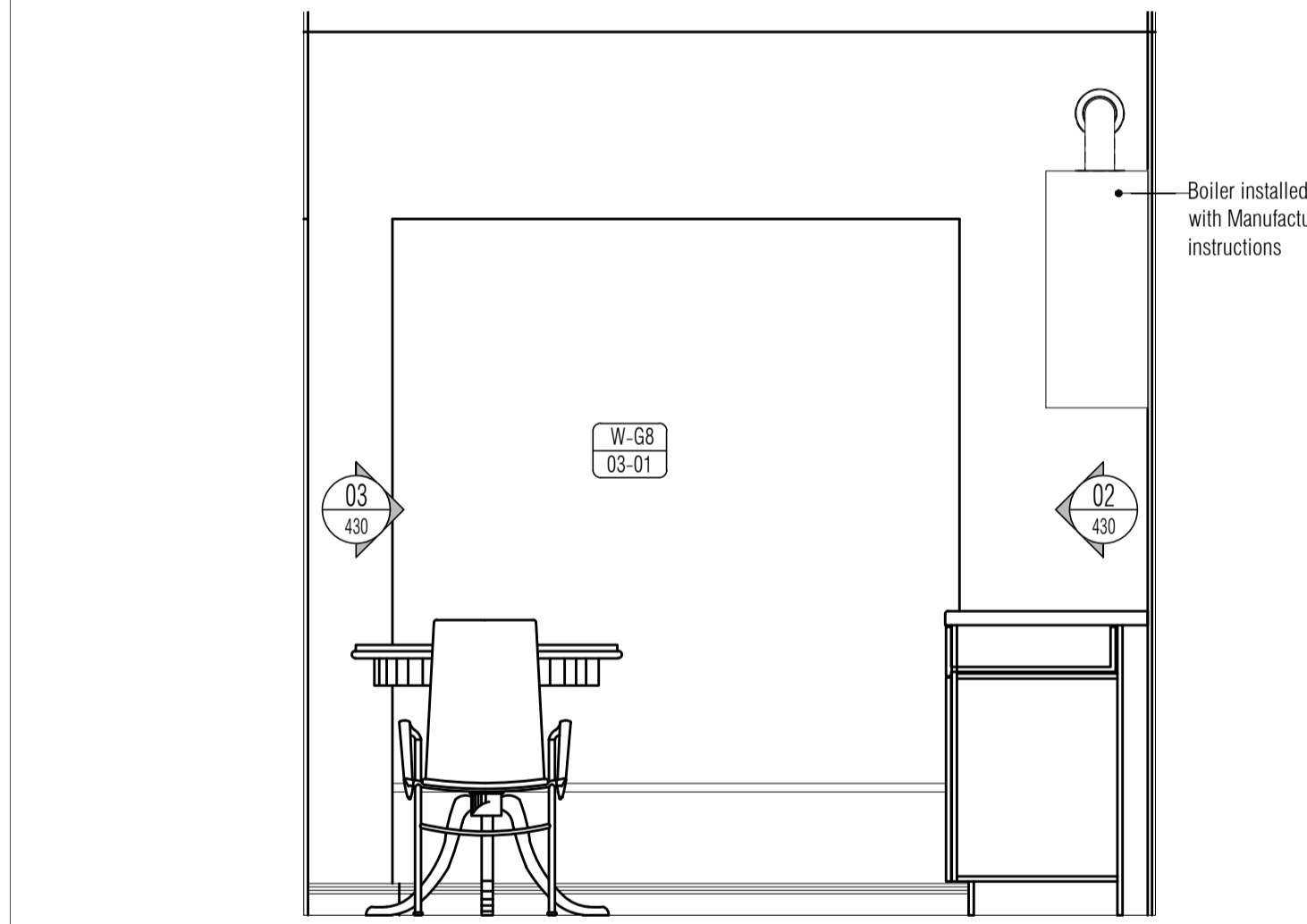
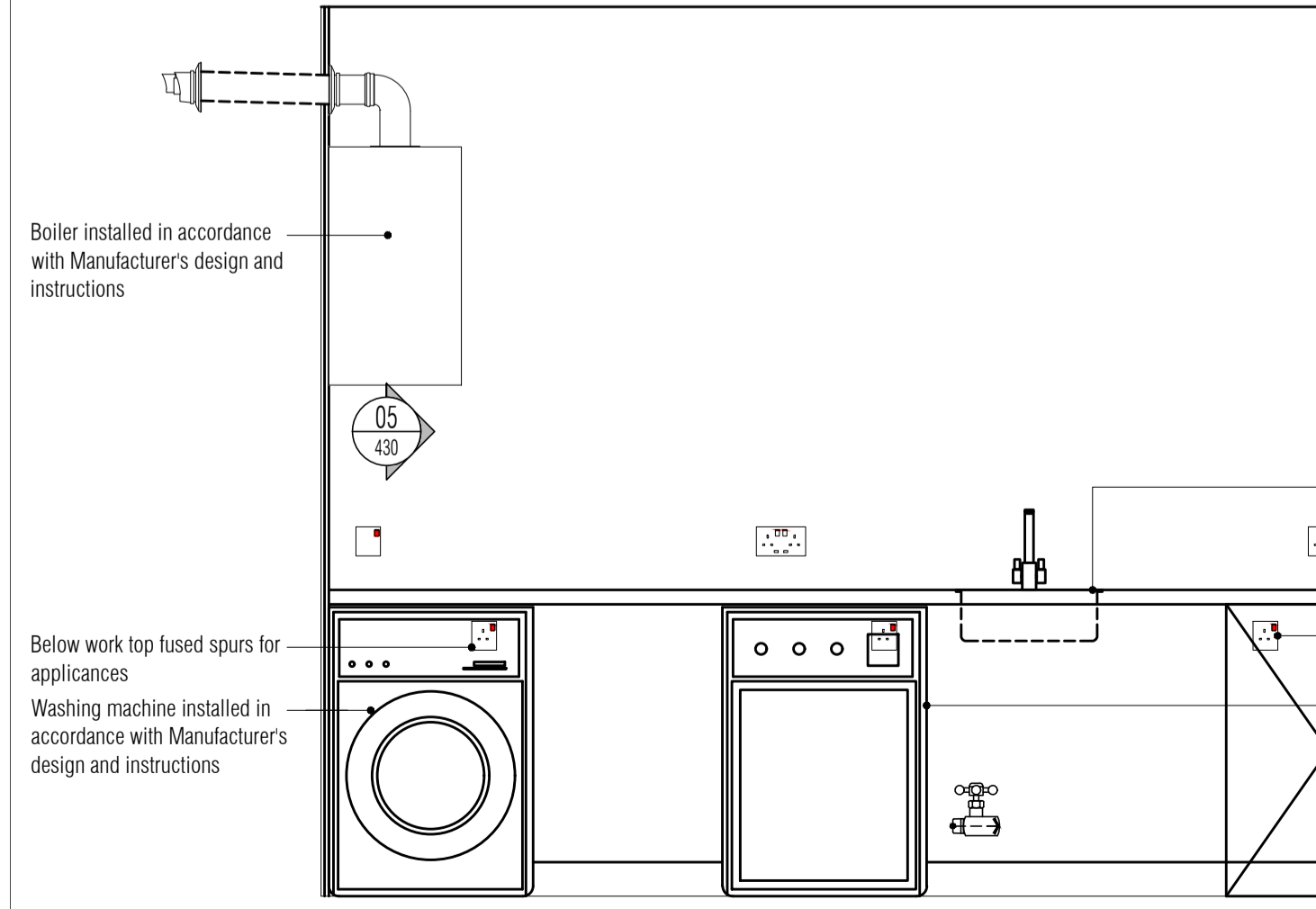


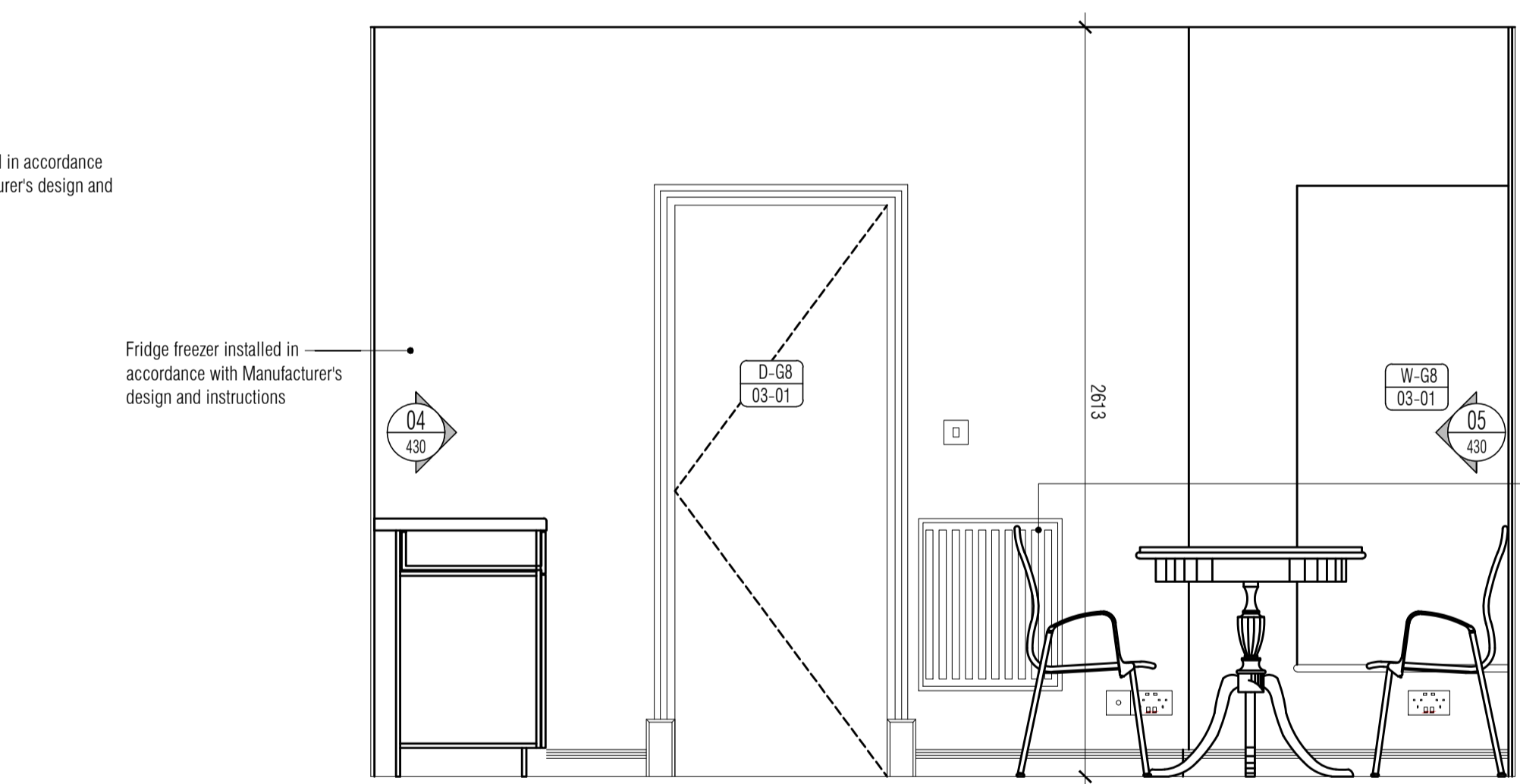
01 Ground Floor Kitchen General Arrangement Plan
132 Scale: 1:20



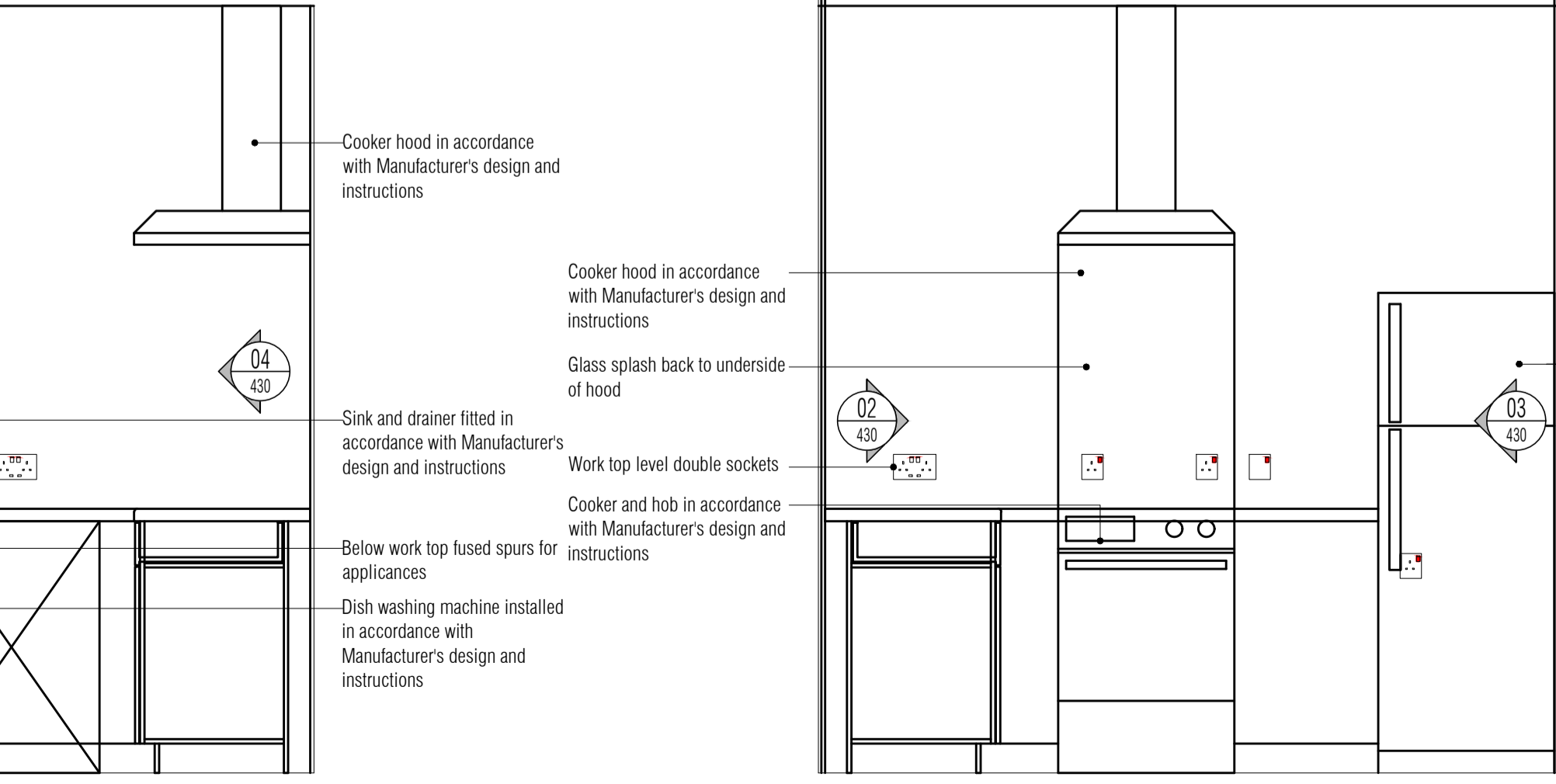
04 Ground Floor Kitchen Elevation 3
430 Scale: 1:20



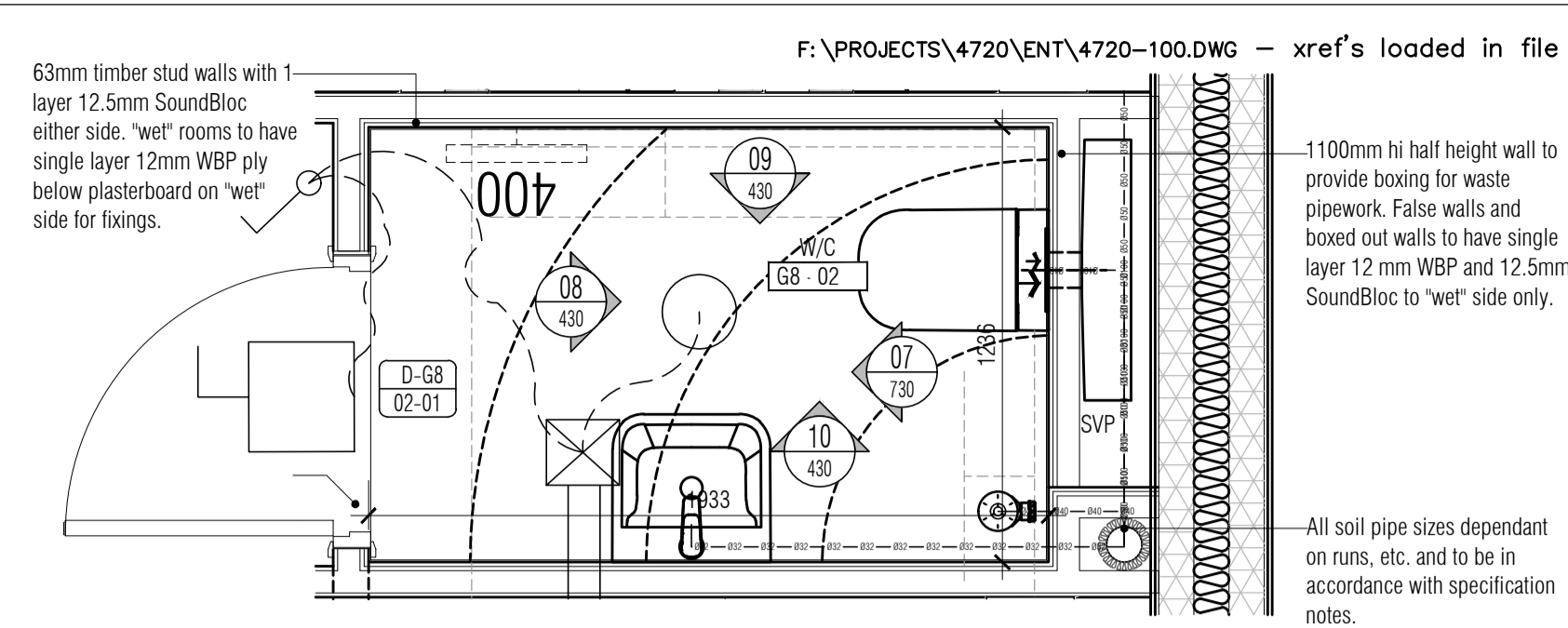
03 Ground Floor Kitchen Elevation 2
430 Scale: 1:20



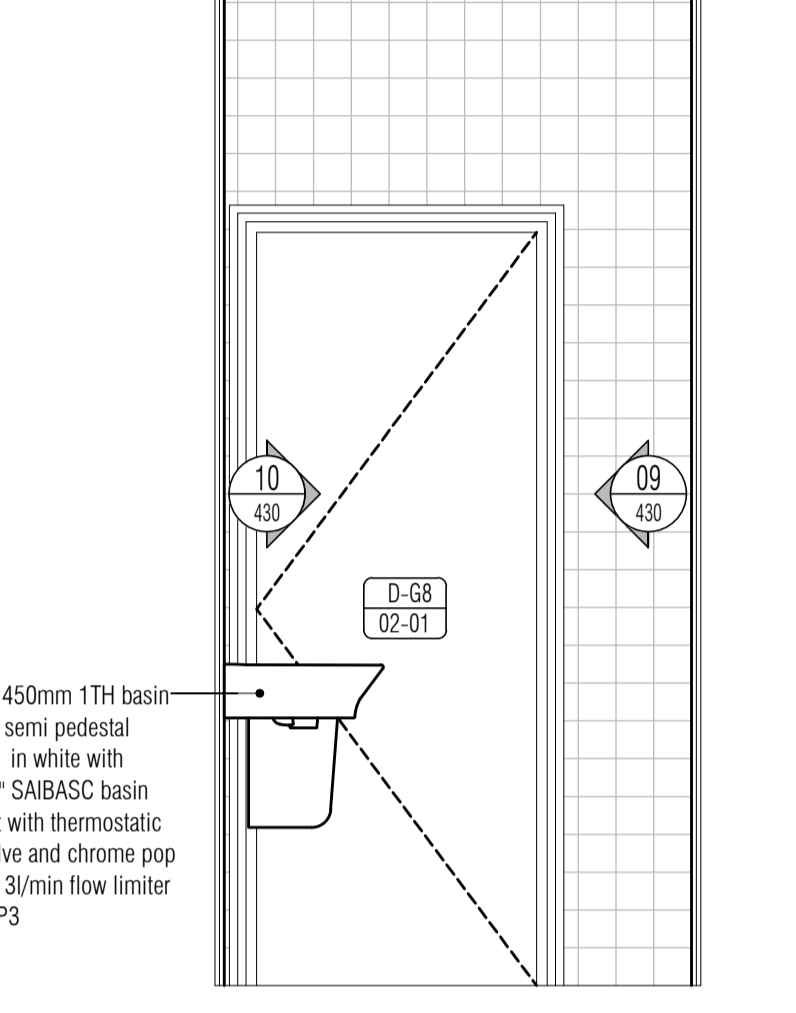
02 Ground Floor Kitchen Elevation 1
430 Scale: 1:20



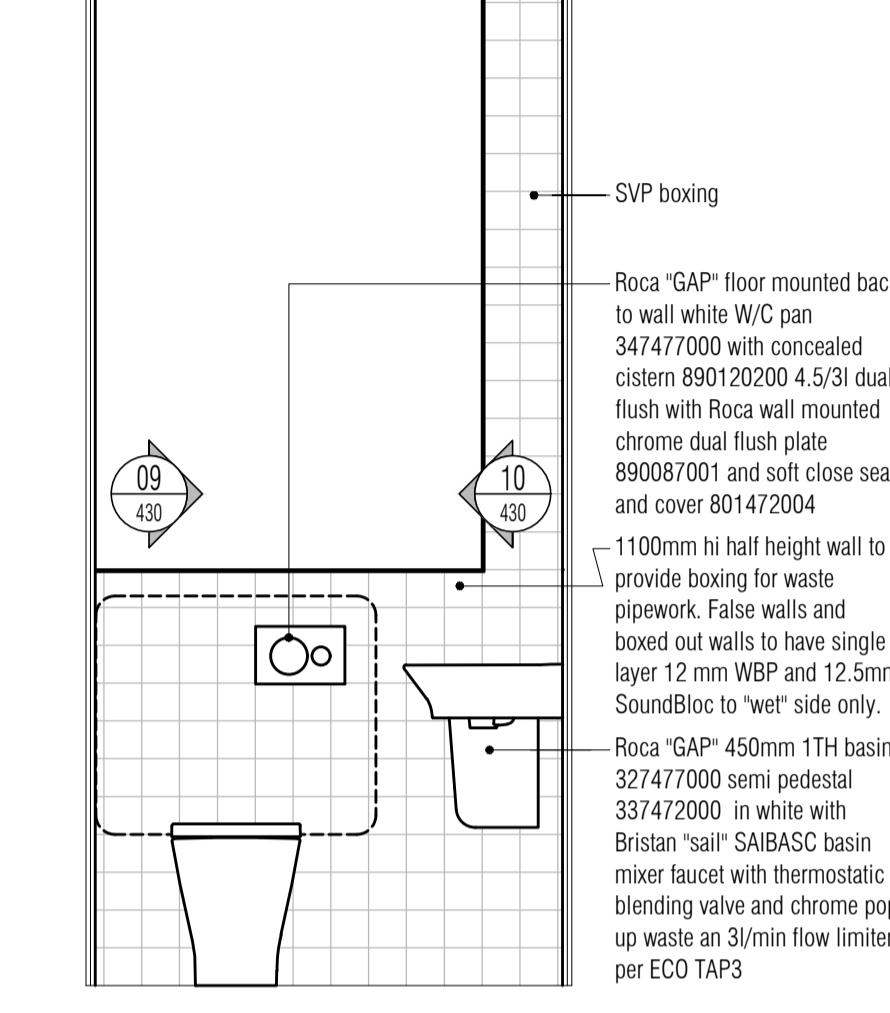
05 Ground Floor Kitchen Elevation 4
430 Scale: 1:20



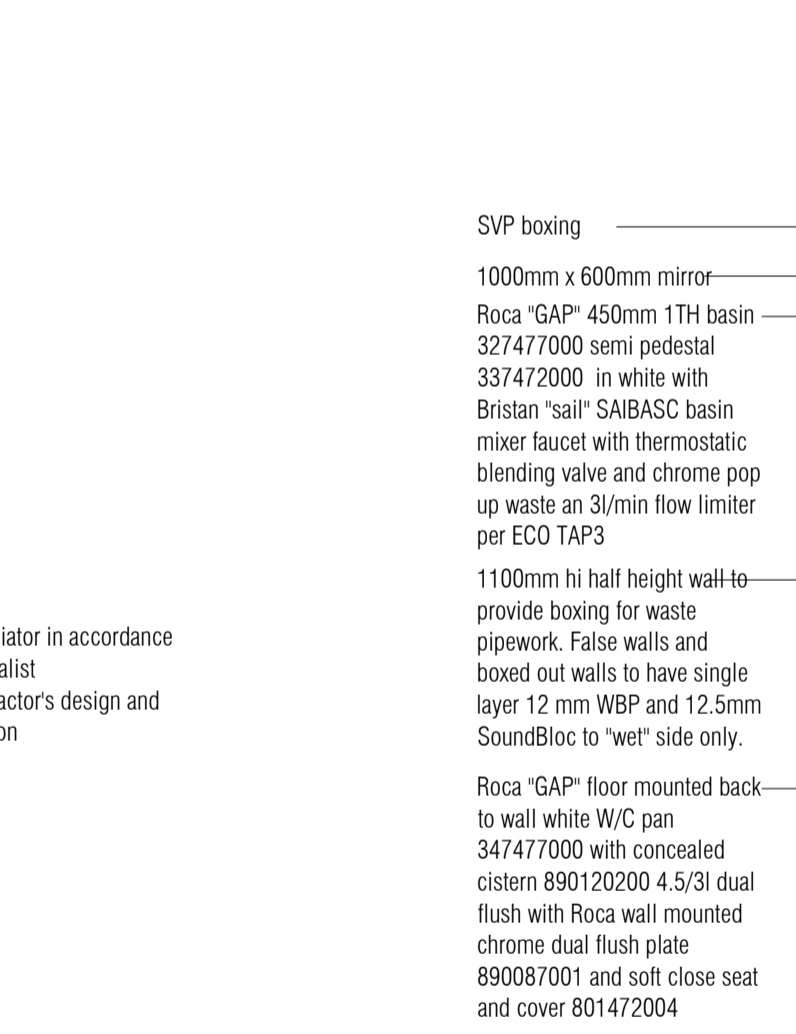
06 Ground Floor Wet Room General Arrangement Plan
132 Scale: 1:20



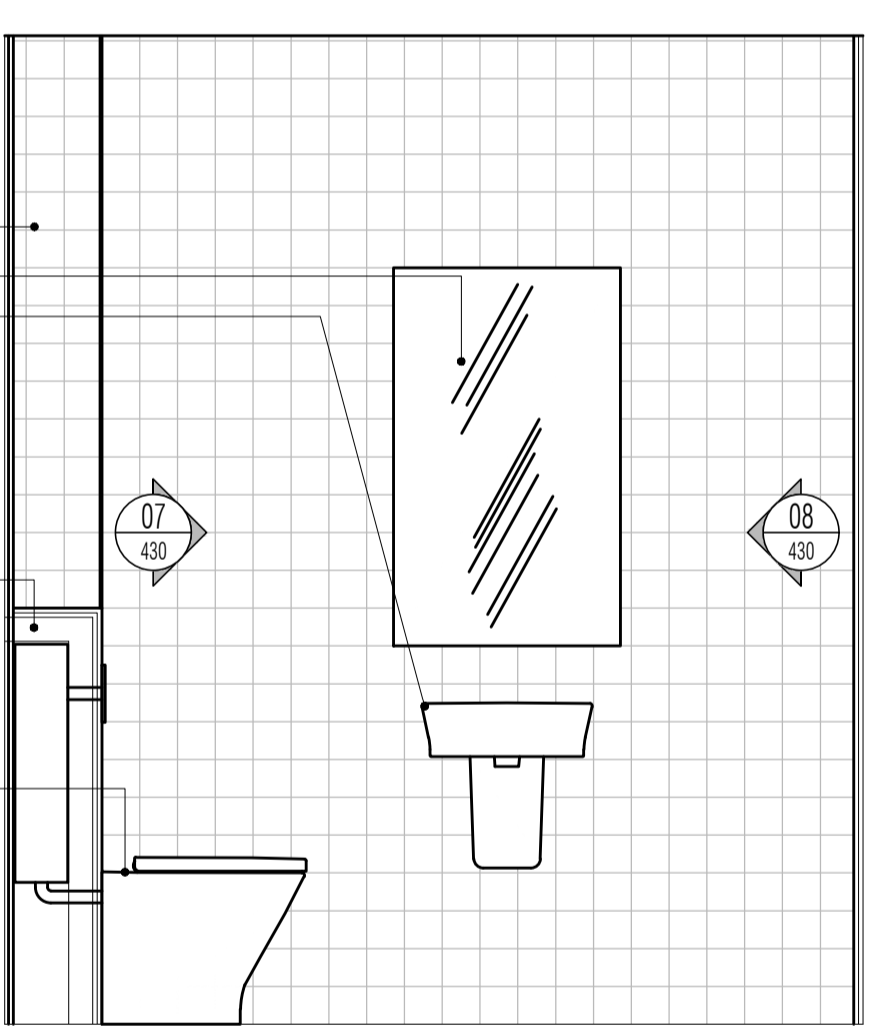
07 Ground Floor Wet Room Elevation 1
430 Scale: 1:20



08 Ground Floor Wet Room Elevation 2
430 Scale: 1:20



09 Ground Floor Wet Room Elevation 3
430 Scale: 1:20



10 Ground Floor Wet Room Elevation 4
430 Scale: 1:20

1. CONTRACTOR IS RESPONSIBLE FOR ALL SETTING OUT AND MUST CHECK DIMENSIONS ON SITE BEFORE WORK IS PUT IN HAND

2. WRITTEN DIMENSIONS ONLY TO BE TAKEN THIS DRAWING MUST NOT BE SCALED

3. ARCHITECT TO BE IMMEDIATELY NOTIFIED OF SUSPECTED OMISSIONS OR DISCREPANCIES

REV. NO.	DATE	BY	CHKD
P1	21.06.16	RKC	RKC
P2	21.06.16	RKC	RKC
P3	06.07.16	RKC	RKC

Services Legend

—	Circuit Line	○	Ceiling Mounted Energy Efficient Pendant Luminaire (all)
—	Consumer Unit With Electric Meter Adjacent	○	Ceiling Mounted Low Voltage Energy Efficient Led Down Lighter (all)
—	—	○	Wall Mounted Energy Efficient Luminaire (all)
—	—	○	Single 13a Switched Socket Outlet
—	—	○	Double 13a Switched Socket Outlet With Usb
—	—	○	Switched Fused Connection Unit
—	—	○	Media Plate Installation With Sockets As Shown
—	—	○	Isolator Rating/no. Poles As Indicated (tbc)
—	—	○	Switchfuse/no. Poles As Indicated (tbc)
—	—	○	Cooker Control Unit
—	—	○	Lightswitch
—	—	○	2 Way Lightswitch
—	—	○	Smoke Detector
—	—	○	Shaver Point
—	—	○	Worktop Height
—	—	○	Below Worktop
—	—	○	Dishwasher
—	—	○	Fridge Freezer
—	—	○	Hob & Cooker
—	—	○	Cooker Hood
—	—	○	Washer Drier
—	—	○	Towel Rail
—	—	○	Presence Detector (PIR)
—	—	○	Radiator (with Length)
—	—	○	Hot Water Cylinder
—	—	○	Stopcock With Flow Arrow
—	—	○	Extract Fan
—	—	○	Wifi Outlet
—	—	○	Telephone Outlet
—	—	○	Dimmer Switch
—	—	○	2 Way Dimmer Switch
—	—	○	Heat Detector
—	—	○	Co Detector
—	—	○	Smoke Detector With Sounder
—	—	○	Heat Detector With Sounder
—	—	○	Door Bell Sounder
—	—	○	Door Bell Button
—	—	○	Boiler With Horizontal Flue
—	—	○	Thermostat
—	—	○	Data Outlet
—	—	○	Tv Outlet
—	—	○	Twin Data Outlet
—	—	○	Satellite Outlet

All electrical services/installations should comply to BS7671 and AD Part P. All services and equipment are shown indicative only. All services should be set out on site prior to installation and location checked by Site Manager prior to installation. All equipment manufacturer's instructions and specifications, along with Building Regulations, should be checked for location compliance

Opening Reference Legend

Denotes opening type: Door, Window, Screen

Denotes room number code

Denotes floor level and unit/plot reference n'

Denotes opening n'

PRELIMINARY ISSUE

RDJW ARCHITECTS

RDjW ARCHITECTS LIMITED
QUIN HOUSE . 9-11 EAST PARK CRAWLEY . WEST SUSSEX . RH10 6AN
TEL: 01293 404300 . FAX: 01293 404299
EMAIL: info@rdjwarchitects.co.uk
WEBSITE: www.rdjwarchitects.co.uk

PROJECT
Housing Development
Springfield Hospital
Hebdon Road
Tooting

Proposed Type 3 Units 1 – 8
2 Bed Terrace Kitchen & Wet Room Internal Elevations

DATE	20.06.16	SCALE	1:20 @ A1
DRAWN	RKC	DRG. NO.	4720-430
CHECKED	RKC	REV.	P3