

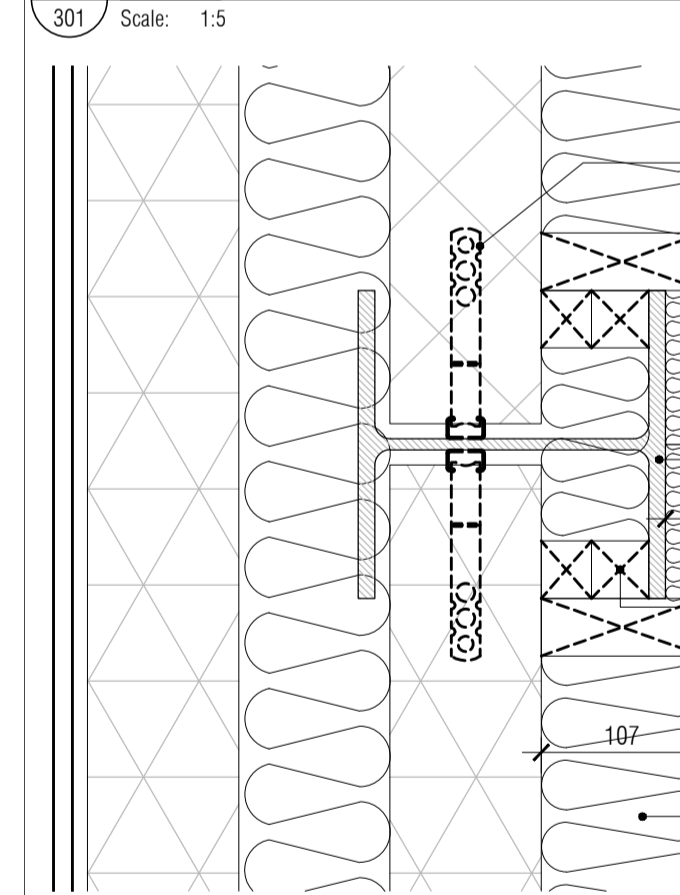
- xref's loaded in file

1. CONTRACTOR IS RESPONSIBLE FOR ALL SETTING OUT AND MUST CHECK DIMENSIONS ON SITE BEFORE WORK IS PUT IN HAND
2. WRITTEN DIMENSIONS ONLY TO BE TAKEN THIS DRAWING MUST NOT BE SCALED
3. ARCHITECT TO BE IMMEDIATELY NOTIFIED OF SUSPECTED OMISSIONS OR DISCREPANCIES

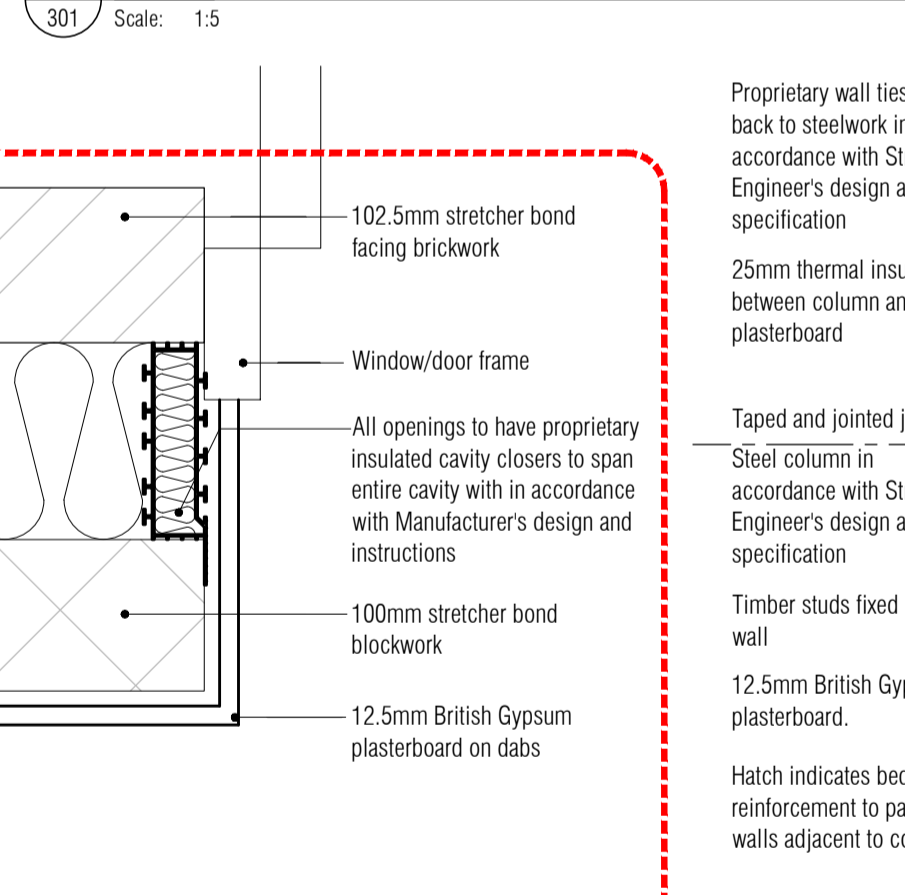
| REVISIONS | DATE | BY |
|-------------------------|----------|-----|
| ISSUED FOR CONSTRUCTION | 17.05.16 | rkc |

- Wall Types Legend**
- Type A: External Wall. 102.5mm stretcher bond facing brickwork with 10mm mortar joints, 130mm full fill blown mineral wool fibre insulation, 100mm stretcher bond light weight concrete blockwork with 10mm mortar joints, finished internally with 15mm SoundBloc plasterboard on 10mm dabs
 - Type B: Internal Party Wall. 100mm stretcher bond lightweight blockwork with 10mm mortar joints with bed reinforcement, 100mm full fill blown mineral wool fibre insulation, 100mm stretcher bond light weight concrete blockwork with 10mm mortar joints. Each side internally finished with 15mm SoundBloc plasterboard on 10mm dabs
 - Type C: Internal Party Wall. 100mm stretcher bond lightweight blockwork with 10mm mortar joints, 100mm full fill blown mineral wool fibre insulation, 100mm stretcher bond light weight concrete blockwork with 10mm mortar joints. Each side internally finished with 15mm SoundBloc plasterboard on 10mm dabs
 - Type D: Internal Timber Stud Wall. 63mm x 48mm timber studs at 400mmc with 15mm SoundBloc each side
 - Type E: Internal Timber Stud Wall to bathrooms. 63mm x 48mm timber studs at 400mmc with 1 layer 12mm WBP ply to the "wet" side and 15mm SoundBloc each side
 - Type G: Internal Services Boxing Stud Wall. 63mm x 48mm timber stud at 400mmc with 1 layer 12mm WBP ply to the "wet" side and 15mm SoundBloc one side
 - Type H: Internal Timber Stud Wall. 63mm x 48mm timber studs at 400mmc with 1 layer 12mm WBP ply to the "wet" side and 15mm SoundBloc one side

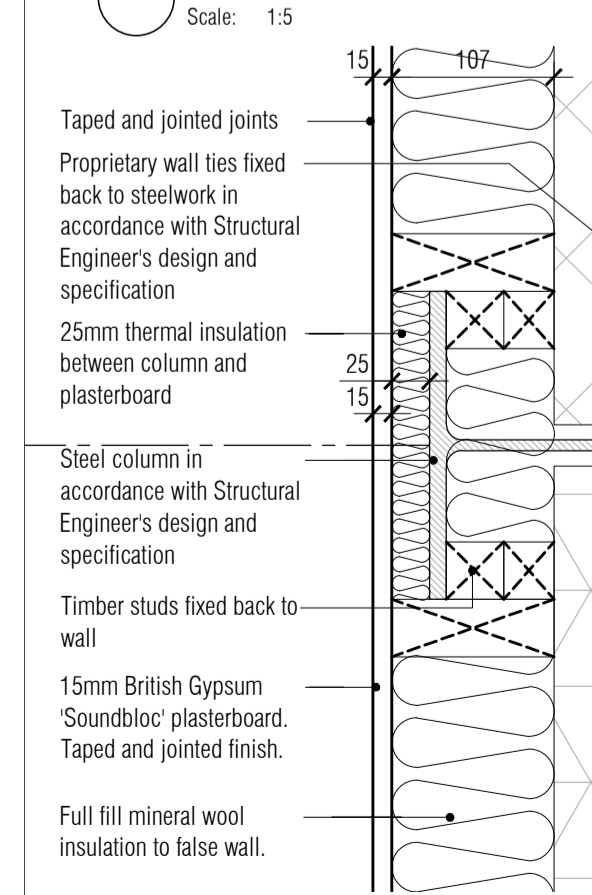
01 Typical Ground Floor / Wall Interface Detail



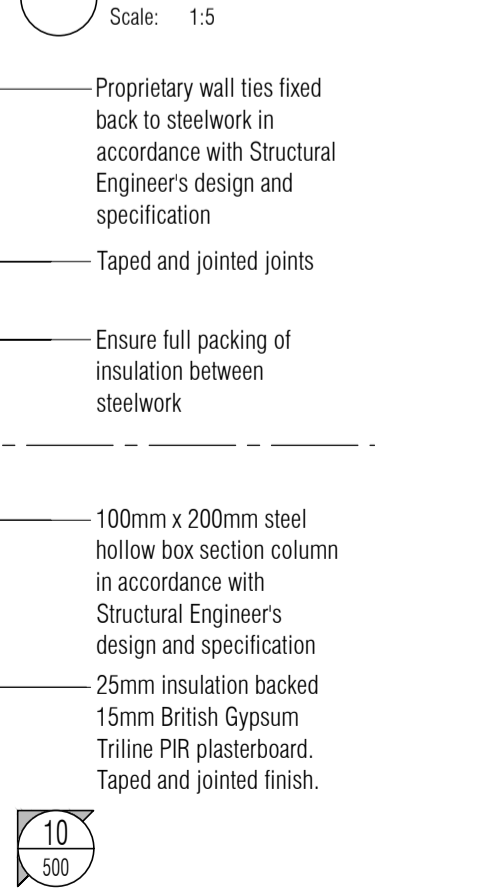
02 Typical Ground Floor / Wall / Level Threshold Interface Detail



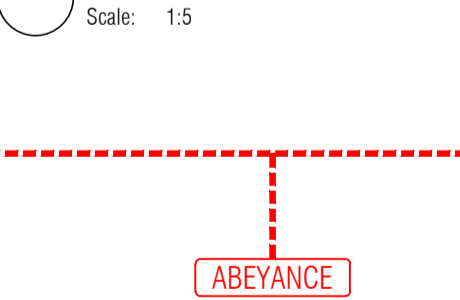
03 Party Wall Steel Column Detail



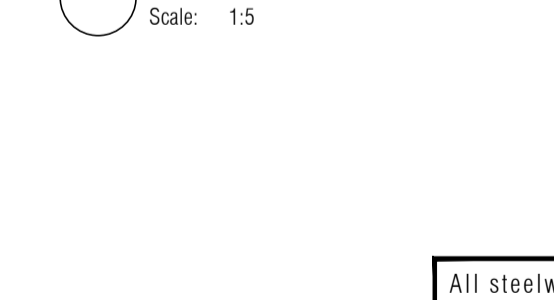
04 Party Wall Box Section Detail



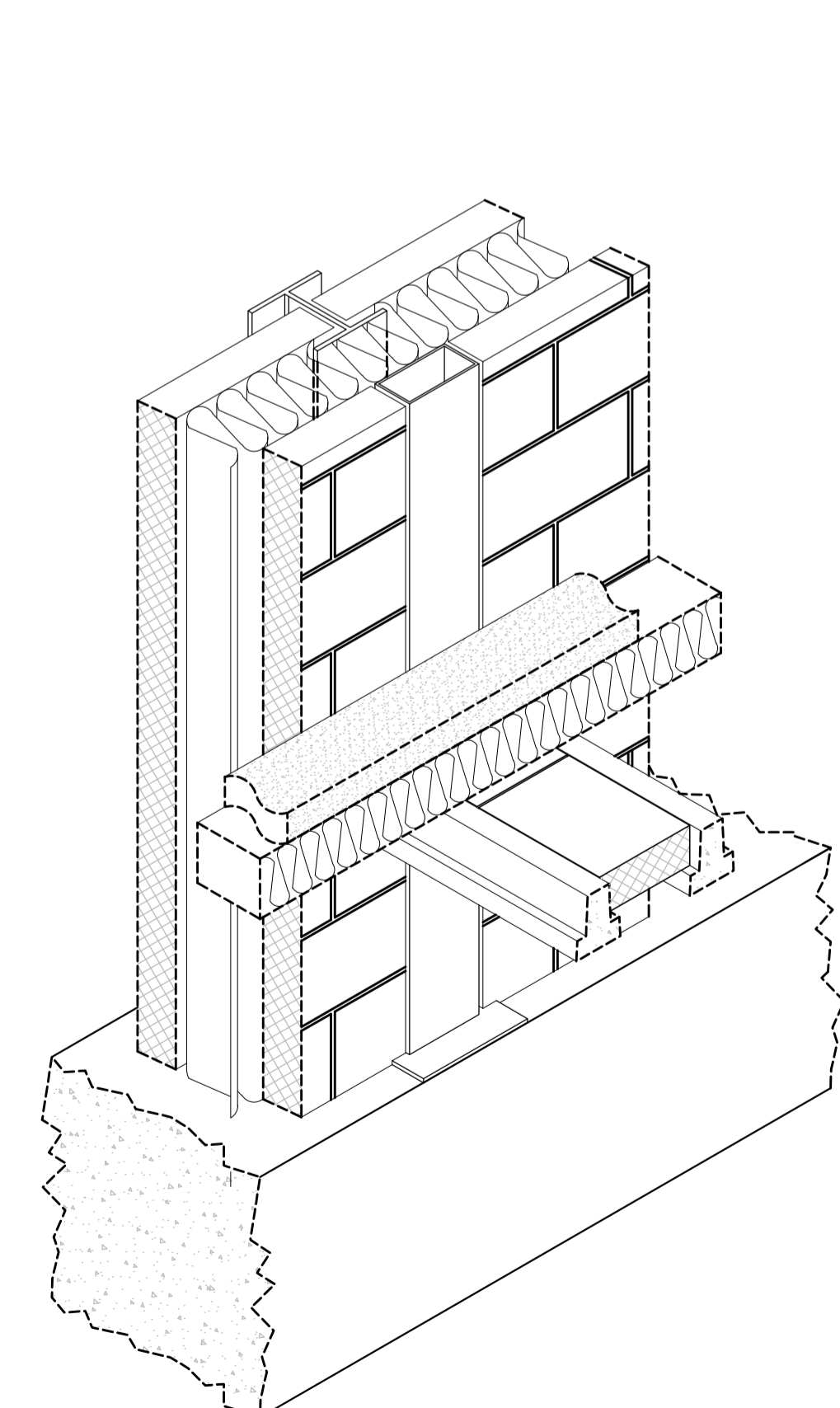
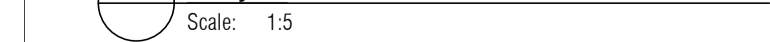
05 Typical Opening Jamb Detail



07 Party Wall Steel Column Detail



08 Party Wall Steel Column / Box Section Detail



10 Typical Party Wall Steel Column / Box Section Axo Detail

Scale: nts

ISSUED FOR CONSTRUCTION

RDJW
ARCHITECTS



RDJW ARCHITECTS LIMITED
QUIN HOUSE . 9-11 EAST PARK
CRAWLEY . WEST SUSSEX . RH10 6AN
TEL: 01293 404300 . FAX: 01293 404299
EMAIL: info@rdjwarchitects.co.uk
WEBSITE: www.rdjwarchitects.co.uk

PROJECT
Housing Development
Springfield Hospital
Hebdon Road
Tooting

Proposed
Foundation & Wall
Details

| | | | |
|---------|----------|----------|-----------|
| DATE | 16.10.15 | SCALE | 1:50 @ A1 |
| DRAWN | RKC | DRG. NO. | 4720-500 |
| CHECKED | | REV. | C1 |

All steelwork to be pre-painted with 1hr FR intumescent paint and touched up on site after erection to ensure no exposed steelwork is apparent and 1hr FR integrity of fire protection is maintained.

ABEVANCE