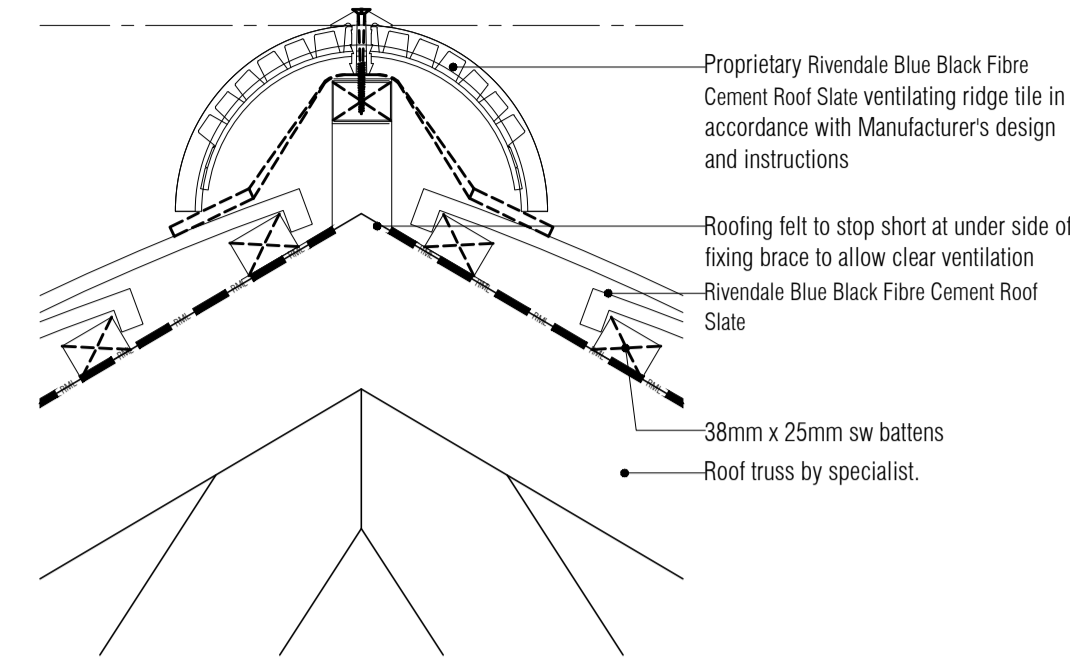


All steelwork to be pre-painted with 1hr FR intumescent paint and touched up on site after erection to ensure no exposed steelwork is apparent and the FR integrity of fire protection is maintained.

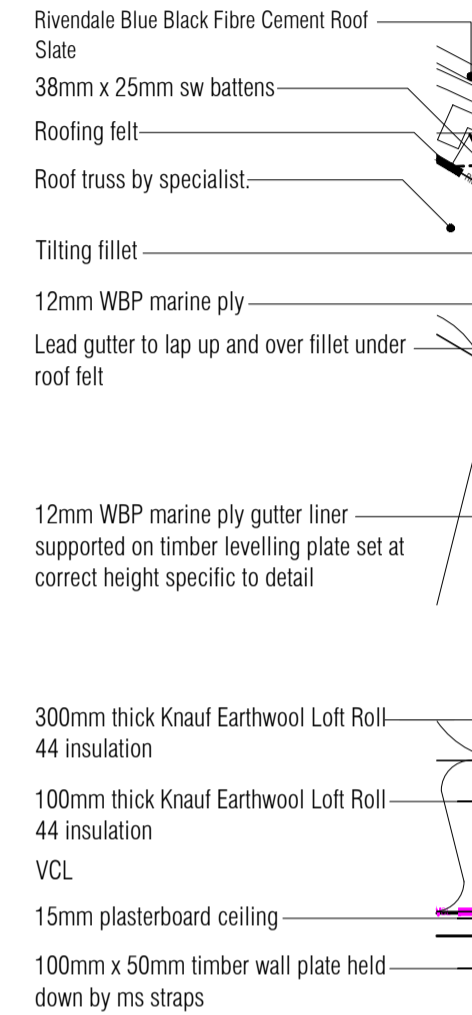
F:\PROJECTS\4720\ENT\4720-100.DWG - xref's loaded in file

- CONTRACTOR IS RESPONSIBLE FOR ALL SETTING OUT AND MUST CHECK DIMENSIONS ON SITE BEFORE WORK IS PUT IN HAND
- WRITTEN DIMENSIONS ONLY TO BE TAKEN THIS DRAWING MUST NOT BE SCALED
- ARCHITECT TO BE IMMEDIATELY NOTIFIED OF SUSPECTED OMISSIONS OR DISCREPANCIES

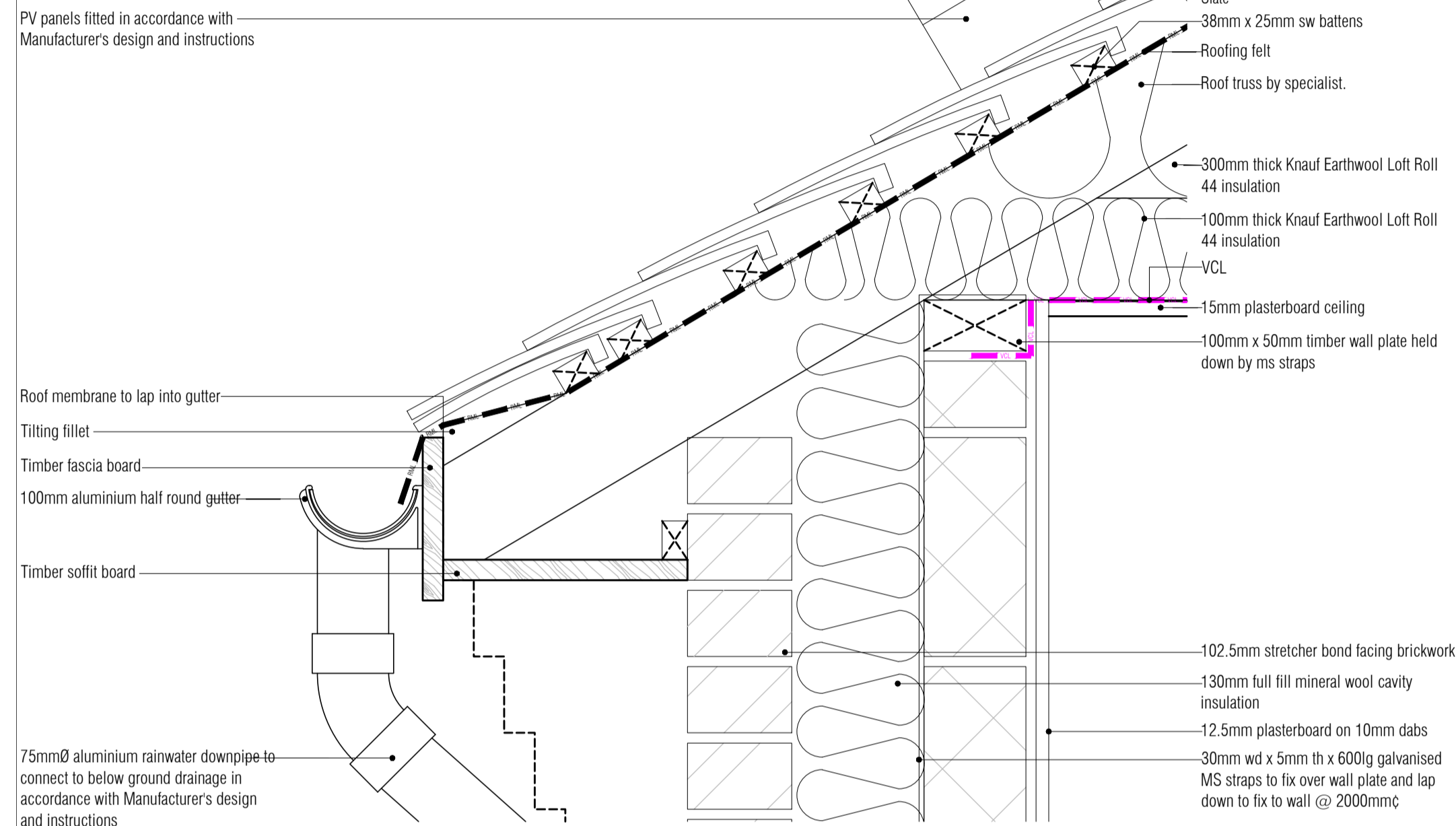
REVISIONS		
ISSUED FOR CONSTRUCTION	17.05.16	rk
C61 revs added	10.06.16	rk
C62 Gen revs	21.06.16	rk
C64 Therm break added	06.07.16	rk
C65 roof felt revs	14.07.16	rk
C66 Markup revs	22.07.16	rk



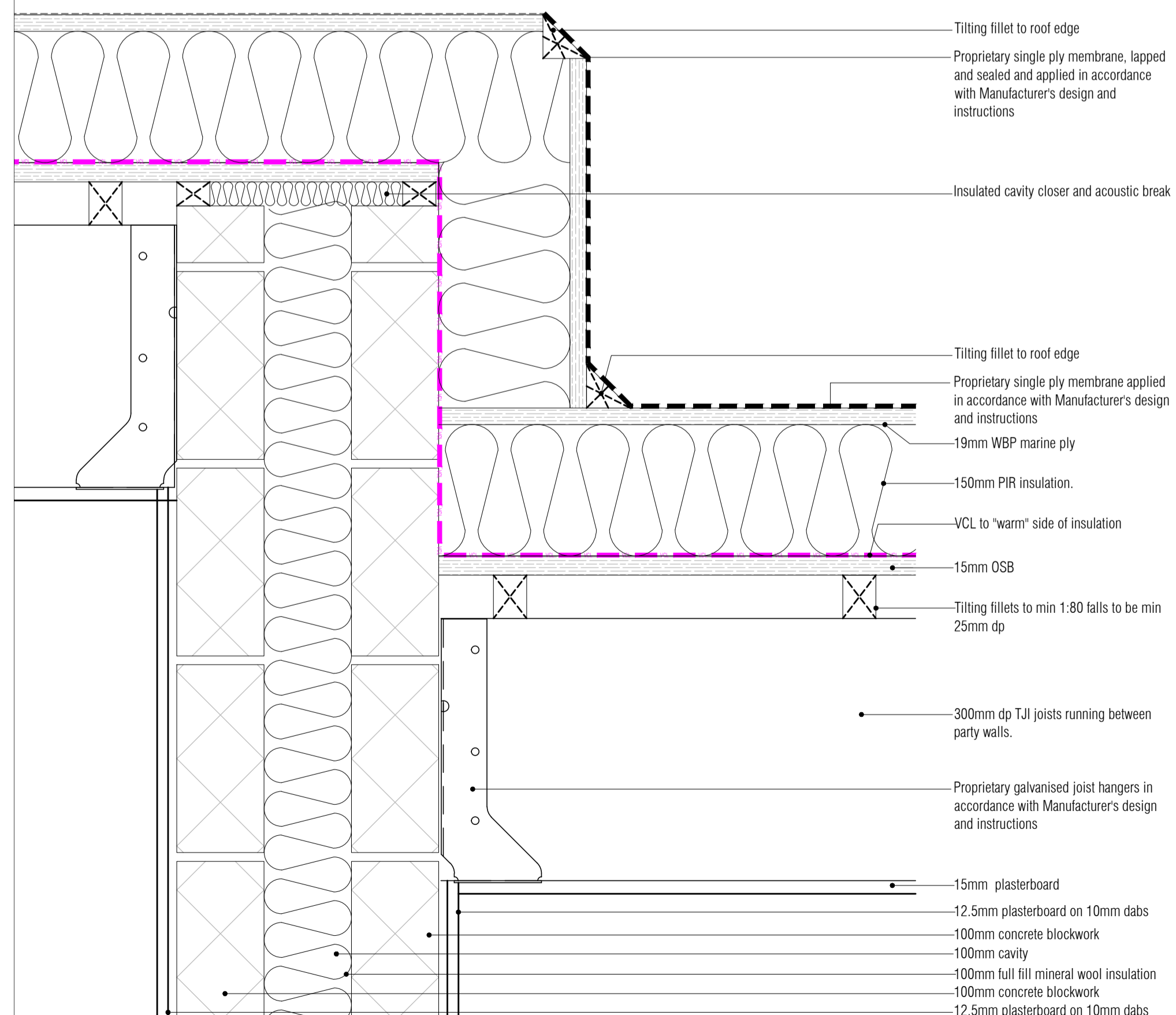
02 Section A - Type 3 - Ridge Detail
Scale: 1:5



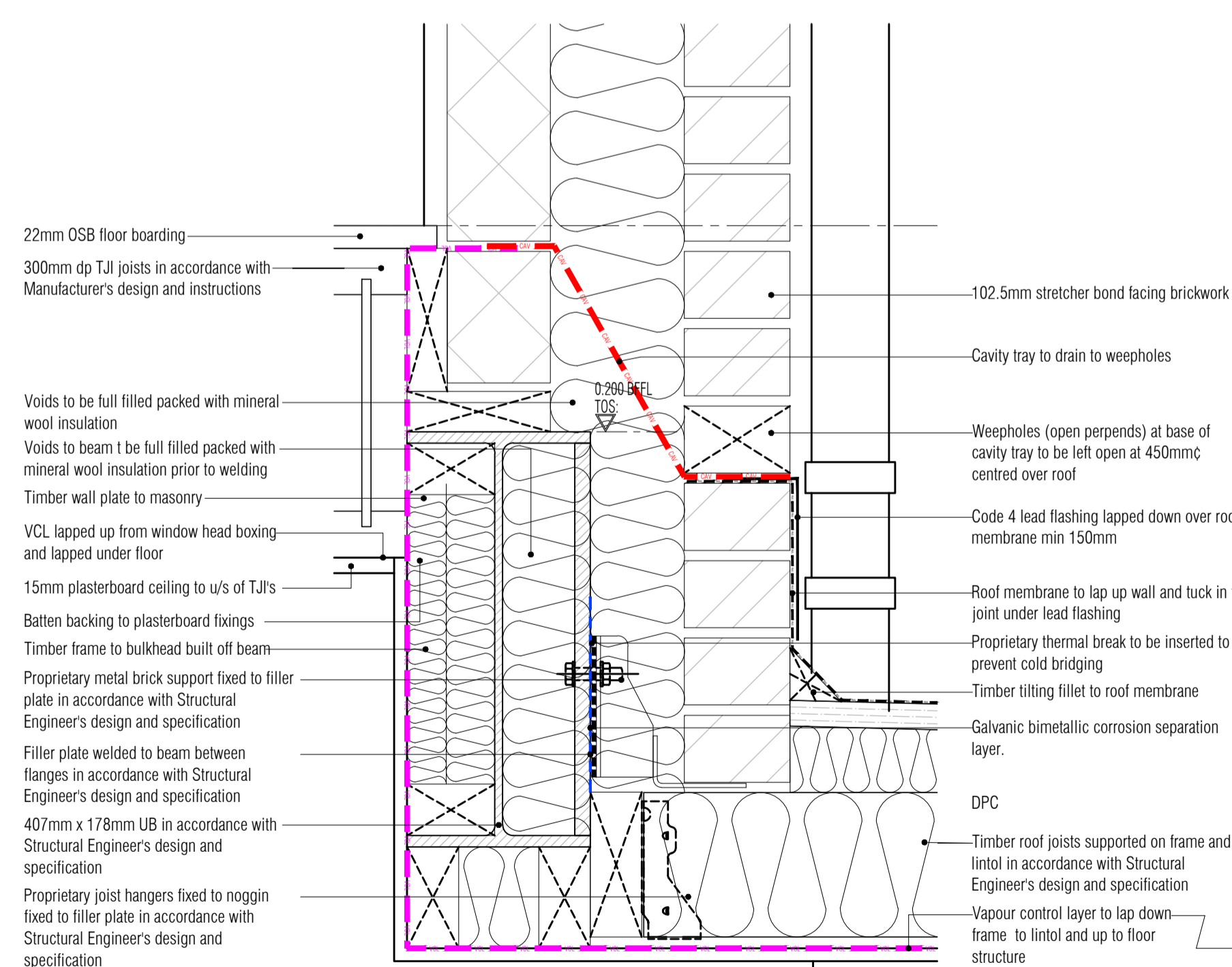
03 Section A - Type 3 - Parapet Detail
Scale: 1:5



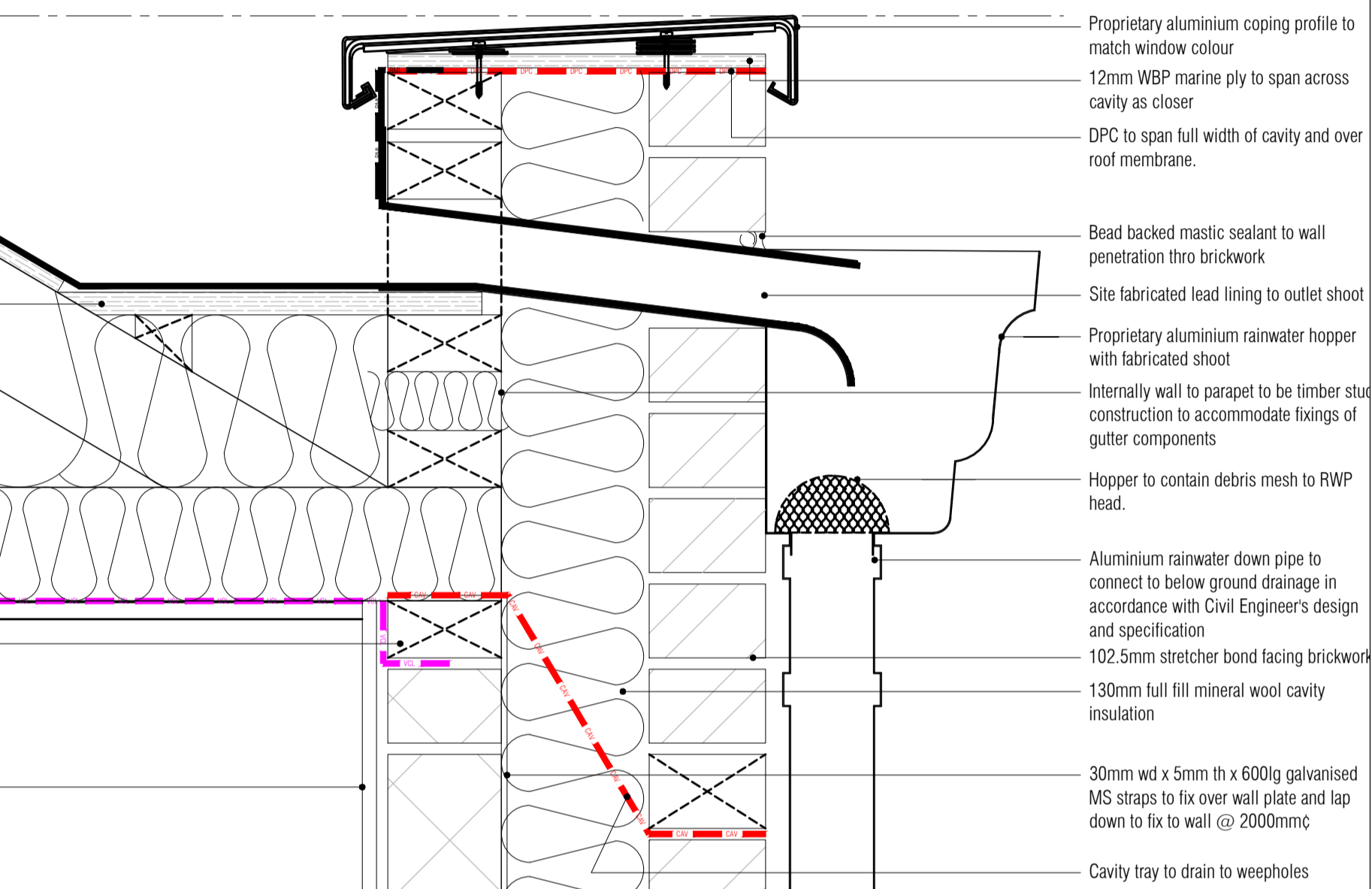
01 Section A - Type 3 - Eaves Details
Scale: 1:5



04 Section B - Type 2 Stepped Roof Detail
Scale: 1:5



05 Section B - Type 3 Kitchen Beam Detail
Scale: 1:5



06 Section B - Type 3 Kitchen Roof Eaves Detail
Scale: 1:5

ISSUED FOR CONSTRUCTION

RDJW
ARCHITECTS



RDJW ARCHITECTS LIMITED
QUIN HOUSE . 9-11 EAST PARK
CRAWLEY . WEST SUSSEX . RH10 6AN
TEL: 01293 404300 . FAX: 01293 404299
E M A I L : info@rdjwarchitects.co.uk
W E B S I T E : www.rdjwarchitects.co.uk

PROJECT
Housing Development
Springfield Hospital
Hebdon Road
Tooting

Proposed
Roof
Details

DATE	15.10.15	SCALE	1:5 @ A1
DRAWN	RKC	DRG. NO.	4720-501
CHECKED		REV.	C6