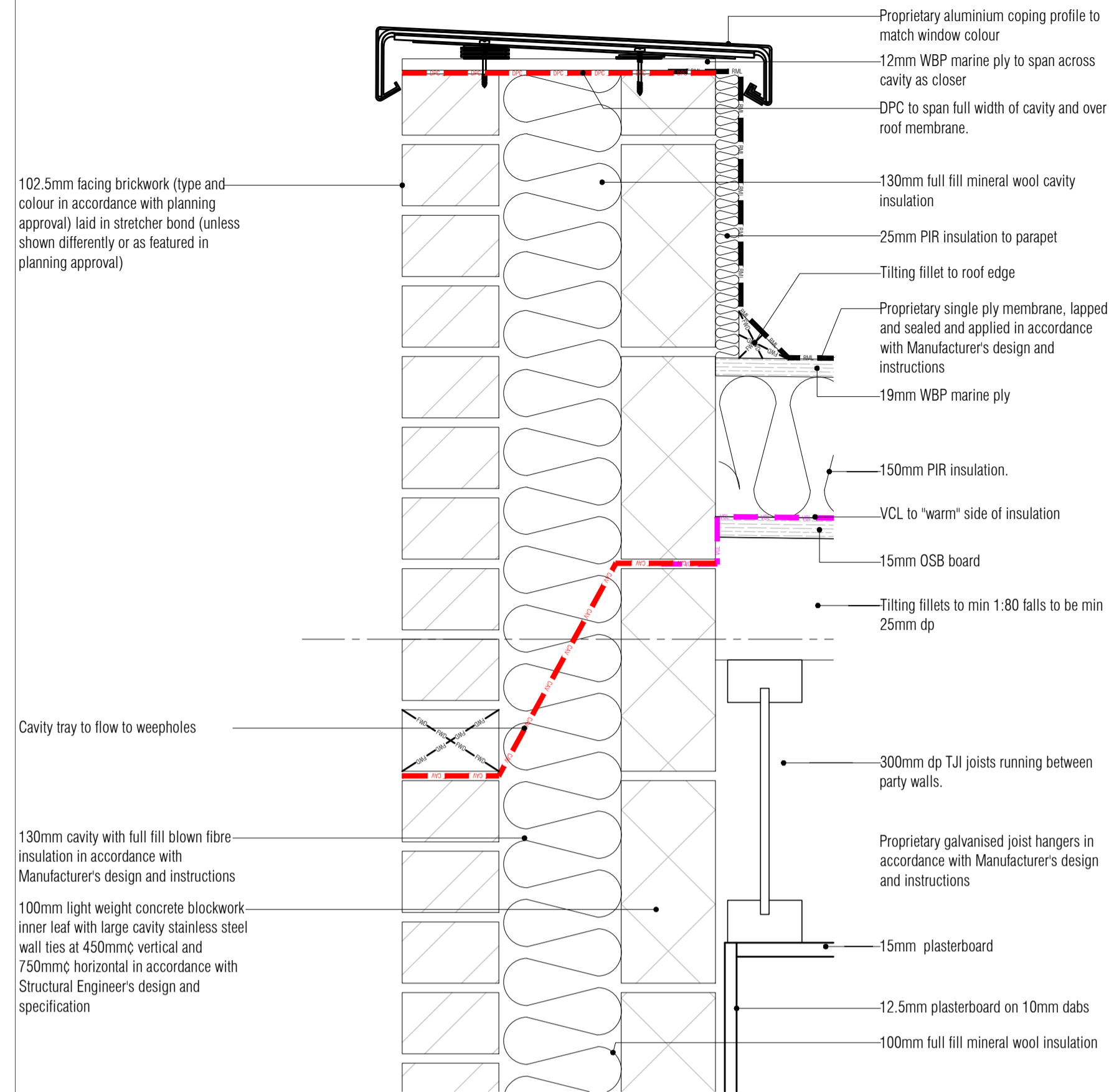
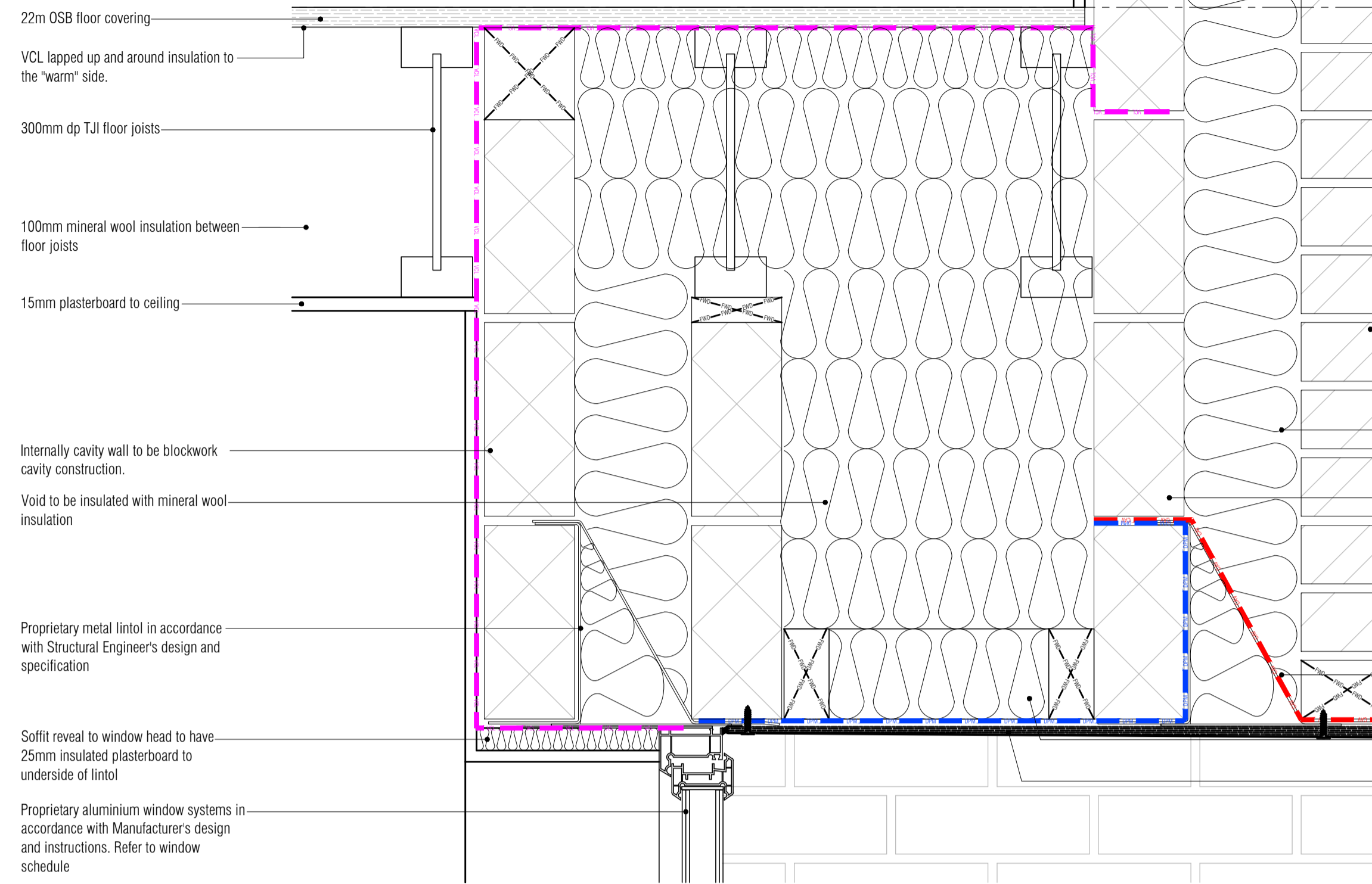


1. CONTRACTOR IS RESPONSIBLE FOR ALL SETTING OUT AND MUST CHECK DIMENSIONS ON SITE BEFORE WORK IS PUT IN HAND
2. WRITTEN DIMENSIONS ONLY TO BE TAKEN THIS DRAWING MUST NOT BE SCALED
3. ARCHITECT TO BE IMMEDIATELY NOTIFIED OF SUSPECTED OMISSIONS OR DISCREPANCIES

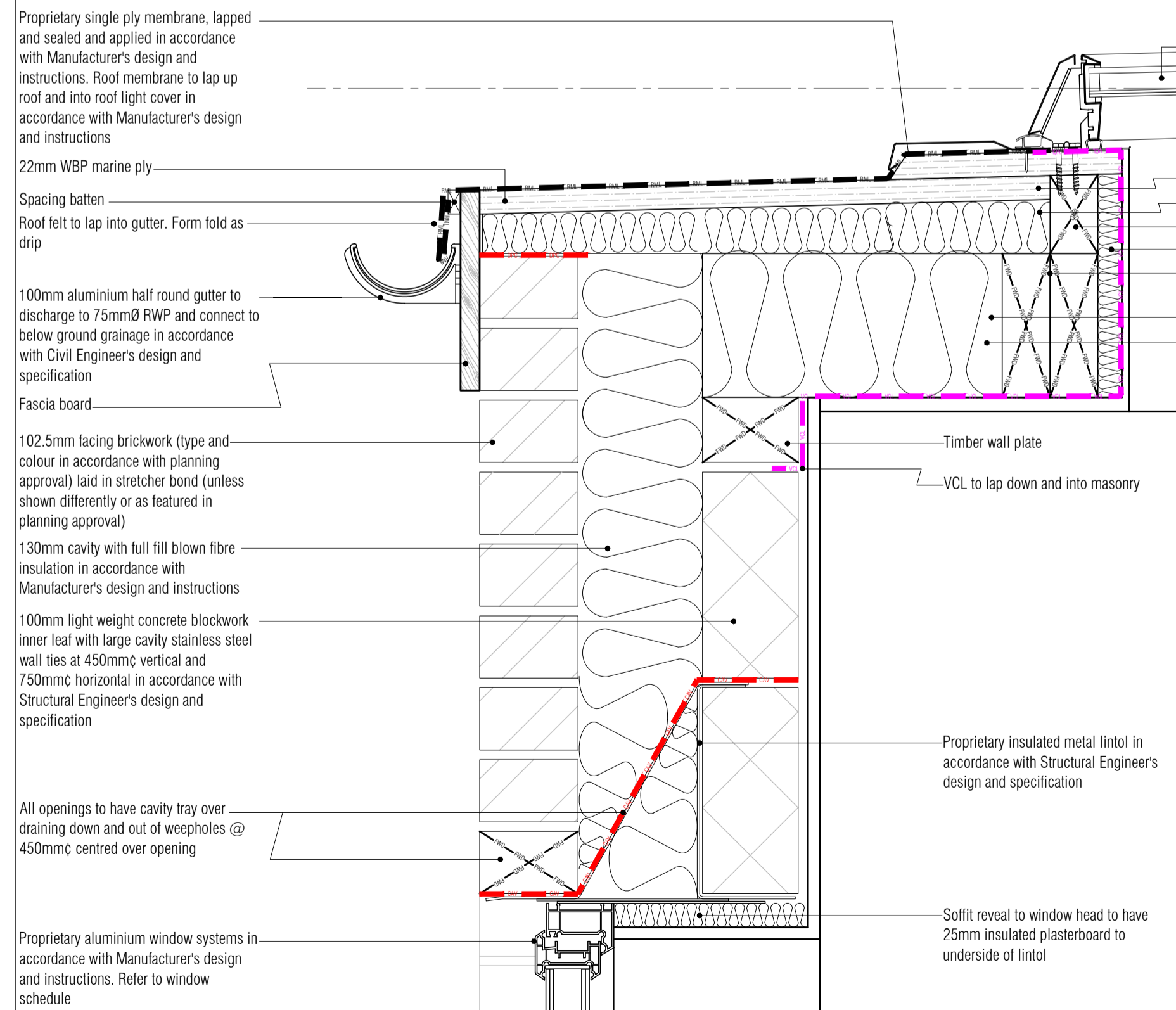
REVISIONS		
ISSUED FOR CONSTRUCTION	17.05.16	rkc
CS1/gen_revs	26.05.16	rkc
CS2/revs_added	10.06.16	rkc
CS3/final_revd	14.07.16	rkc
CS4/markup_revs	22.07.16	rkc



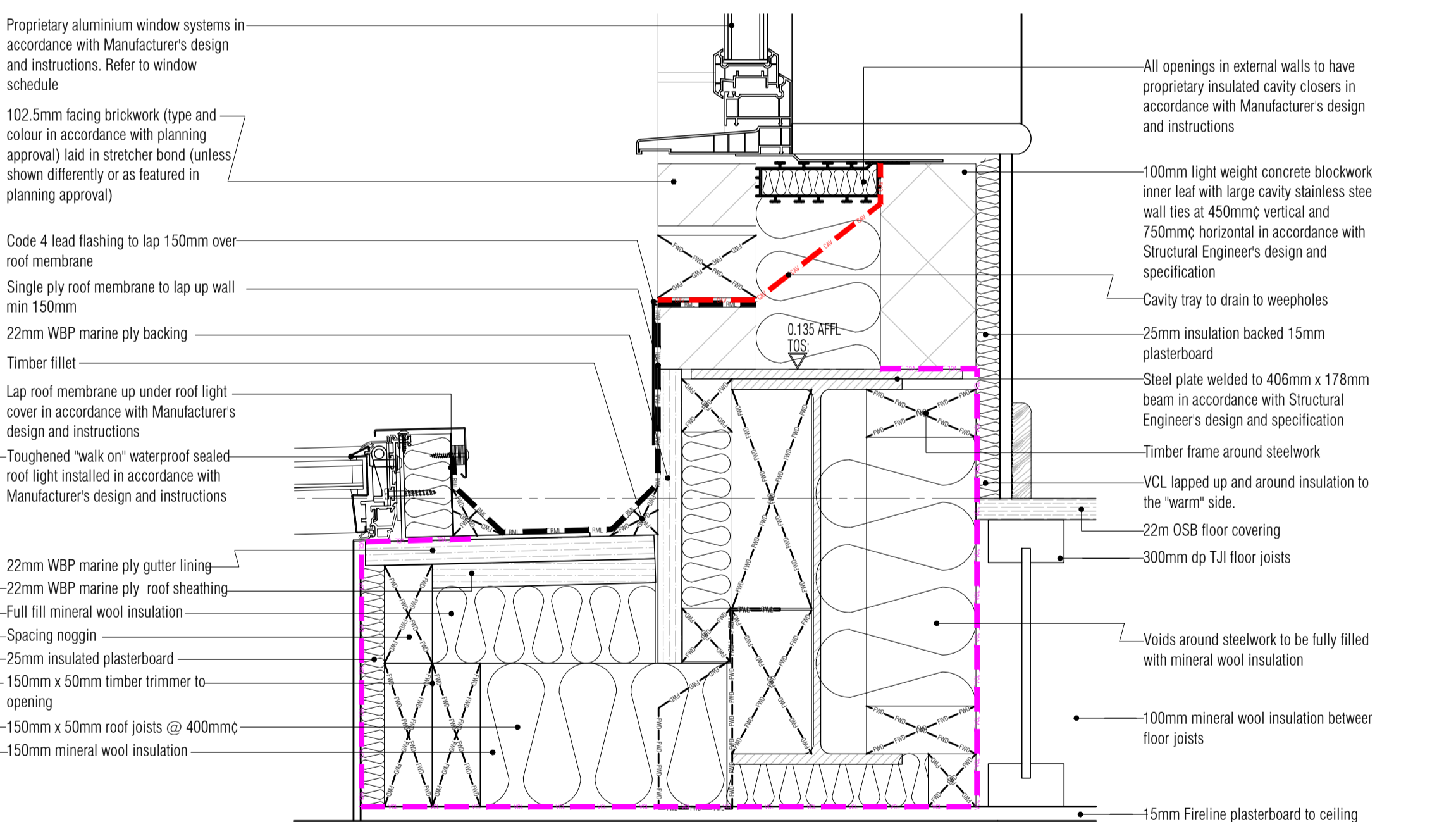
01 Parapet/Flat Roof Interface Detail
Scale: 1:5



02 Recess Window Head Detail
Scale: 1:5



03 Flat Roof Eaves and Rooflight Cill Detail
Scale: 1:5



04 Rooflight Head, Flat Roof/Wall and Cill Detail
Scale: 1:5

- 102.5mm facing brickwork (type and colour in accordance with planning approval) laid in stretcher bond (unless shown differently or as featured in planning approval)
- 130mm cavity with full fill blown fibre insulation in accordance with Manufacturer's design and instructions
- 100mm light weight concrete blockwork inner leaf with large cavity stainless steel wall ties at 450mm vertical and 750mm horizontal in accordance with Structural Engineer's design and specification
- All openings to have cavity tray over draining down and out of weepholes @ 450mm vertical and 750mm horizontal in accordance with Structural Engineer's design and instructions. Colour to match windows.
- Proprietary specialist design WBP backed aluminium soffit panel fixed to fall away from window in accordance with Manufacturer's design and instructions.
- Fully insulated timber frame to soffit built off walls
- Proprietary aluminium window systems in accordance with Manufacturer's design and instructions. Refer to window schedule
- 25mm insulated plasterboard to underside of lintel
- Proprietary metal lintol in accordance with Structural Engineer's design and specification
- 300mm dp TJI joists running between party walls.
- 15mm plasterboard
- 12.5mm plasterboard on 10mm dabs
- 100mm full fill mineral wool insulation
- 150mm PIR insulation
- VCL to "warm" side of insulation
- 15mm OSB board
- Tilting fillets to min 1:80 falls to be min 25mm dp
- 19mm WBP marine ply
- Proprietary single ply membrane, lapped and sealed and applied in accordance with Manufacturer's design and instructions
- Tilting fillet to roof edge
- 25mm PIR insulation to parapet
- 130mm full fill mineral wool cavity insulation
- 12mm WBP marine ply to span across cavity as closer
- DPC to span full width of cavity and over roof membrane.
- Proprietary aluminium coping profile to match window colour

ISSUED FOR CONSTRUCTION

RDJW
ARCHITECTS



RDJW ARCHITECTS LIMITED
QUIN HOUSE . 9-11 EAST PARK
CRAWLEY . WEST SUSSEX . RH10 6AN
TEL: 01293 404300 . FAX: 01293 404299
E M A I L : info@rdjwarchitects.co.uk
W E B S I T E : www.rdjwarchitects.co.uk

PROJECT
Housing Development
Springfield Hospital
Hebdon Road
Tooting

Proposed Type 2
4 Bed Mid-Terrace
Details

All steelwork to be pre-painted with 1hr FR intumescent paint and touched up on site after erection to ensure no exposed steelwork is apparent and 1hr FR integrity of fire protection is maintained.

DATE	16.10.15	SCALE	1:5 @ A1
DRAWN	RKC	DRG. NO.	4720-502
CHECKED		REV.	C5