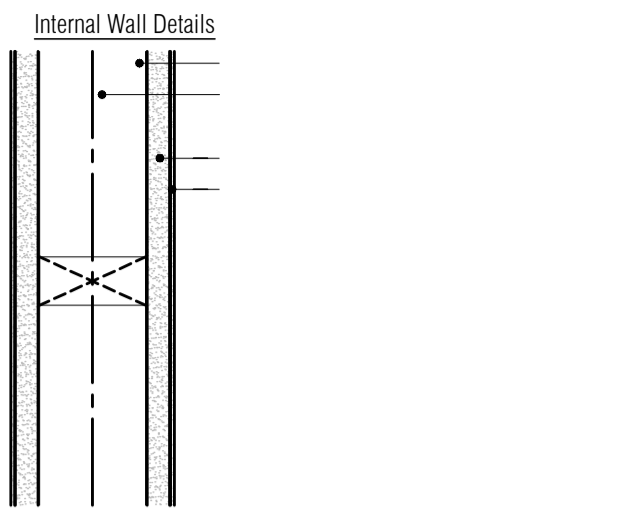


1. CONTRACTOR IS RESPONSIBLE FOR ALL SETTING OUT AND MUST CHECK DIMENSIONS ON SITE BEFORE WORK IS PUT IN HAND

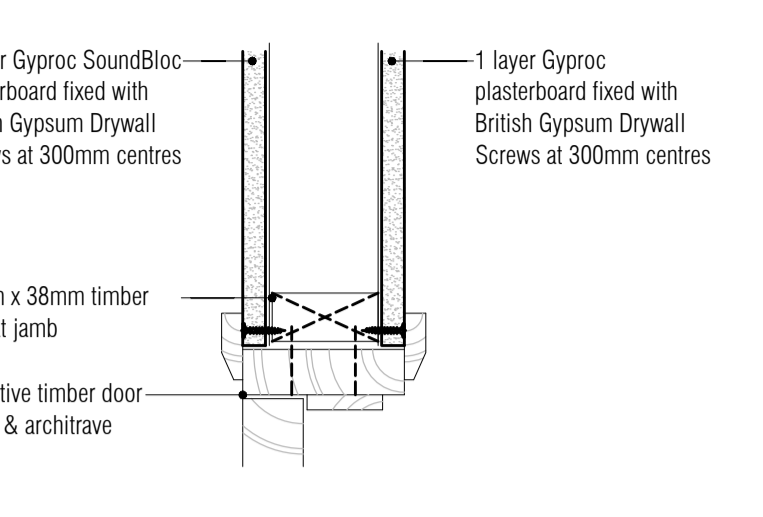
2. WRITTEN DIMENSIONS ONLY TO BE TAKEN THIS DRAWING MUST NOT BE SCALED

3. ARCHITECT TO BE IMMEDIATELY NOTIFIED OF SUSPECTED OMISSIONS OR DISCREPANCIES

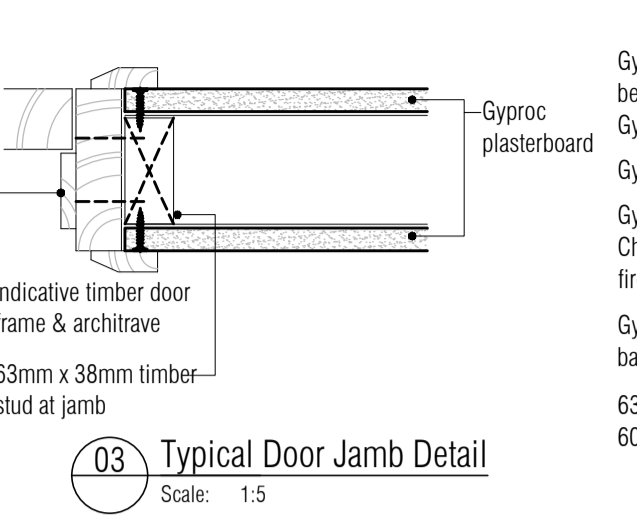
REVISIONS	DATE	BY
ISSUED FOR CONSTRUCTION	17.05.16	rkc



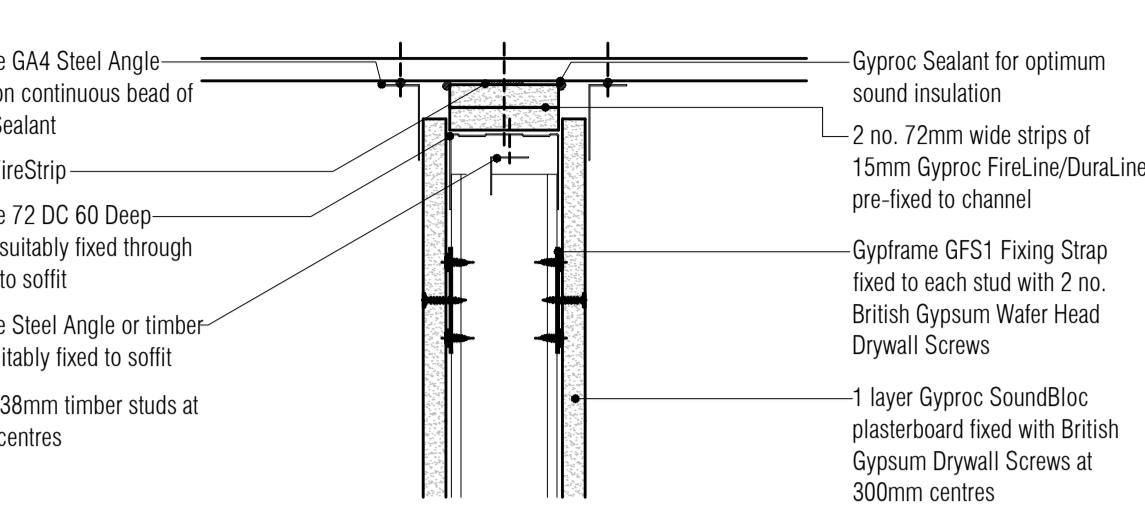
01 Typical Wall Section
Scale: 1:5



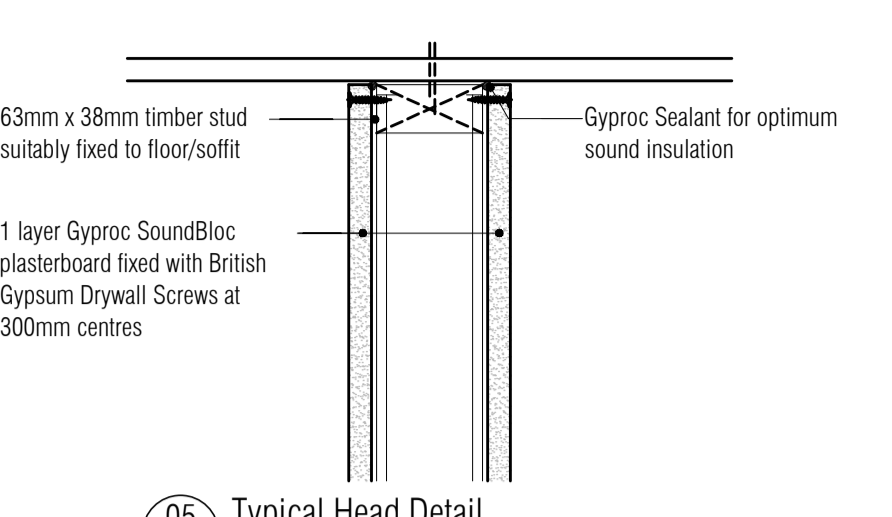
02 Typical Door Head Detail
Scale: 1:5



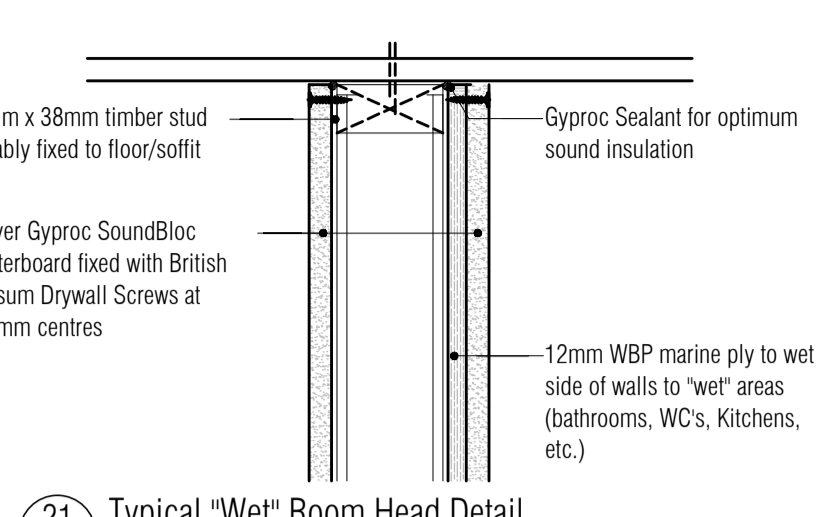
03 Typical Door Jamb Detail
Scale: 1:5



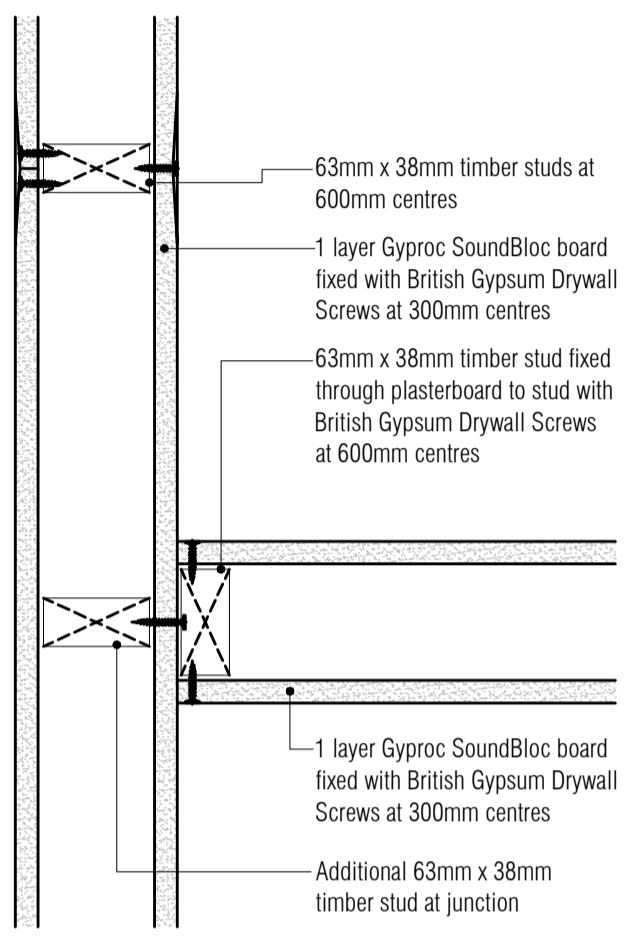
04 Typical Deflection Head Detail
Scale: 1:5



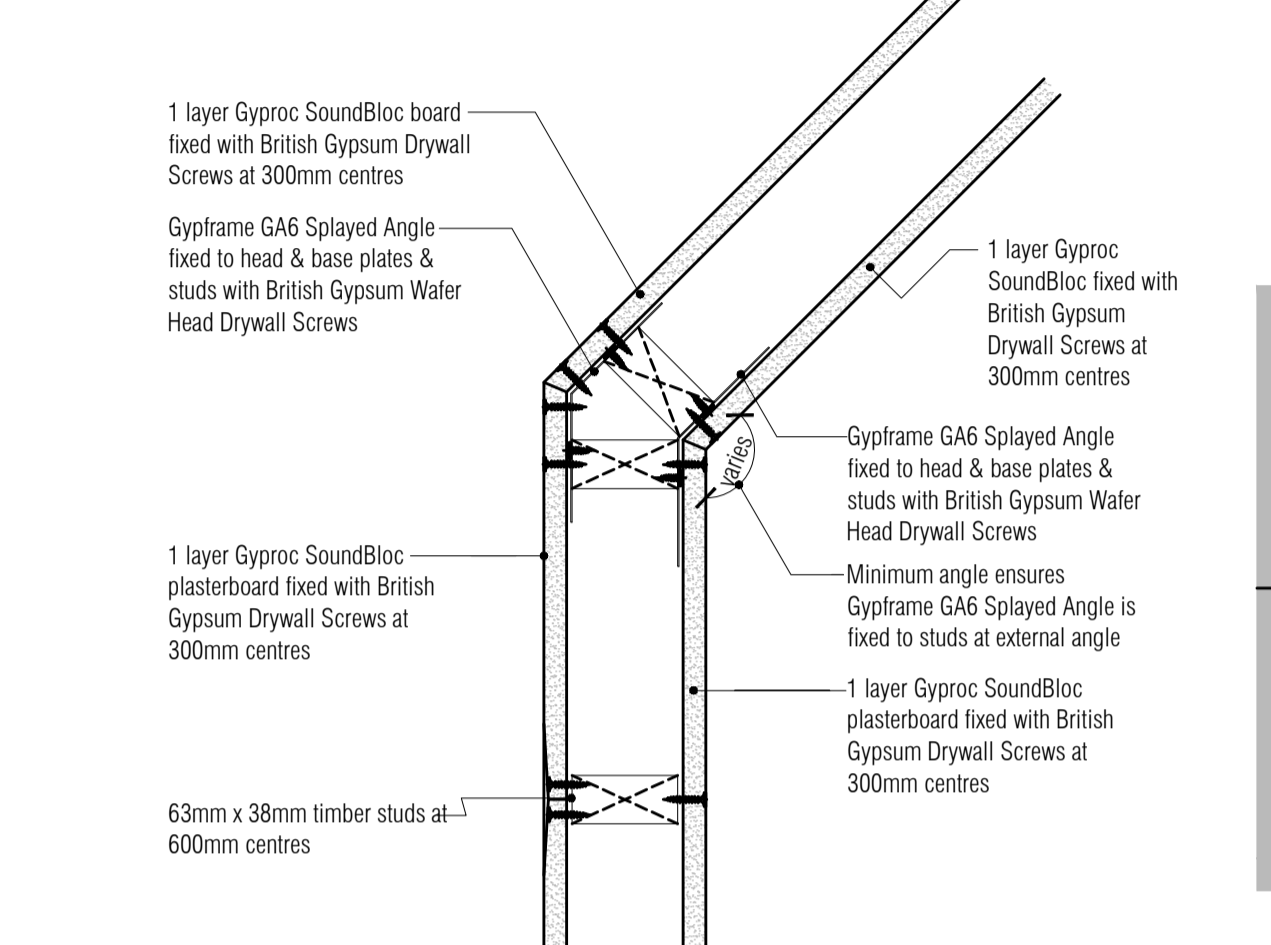
05 Typical Head Detail
Scale: 1:5



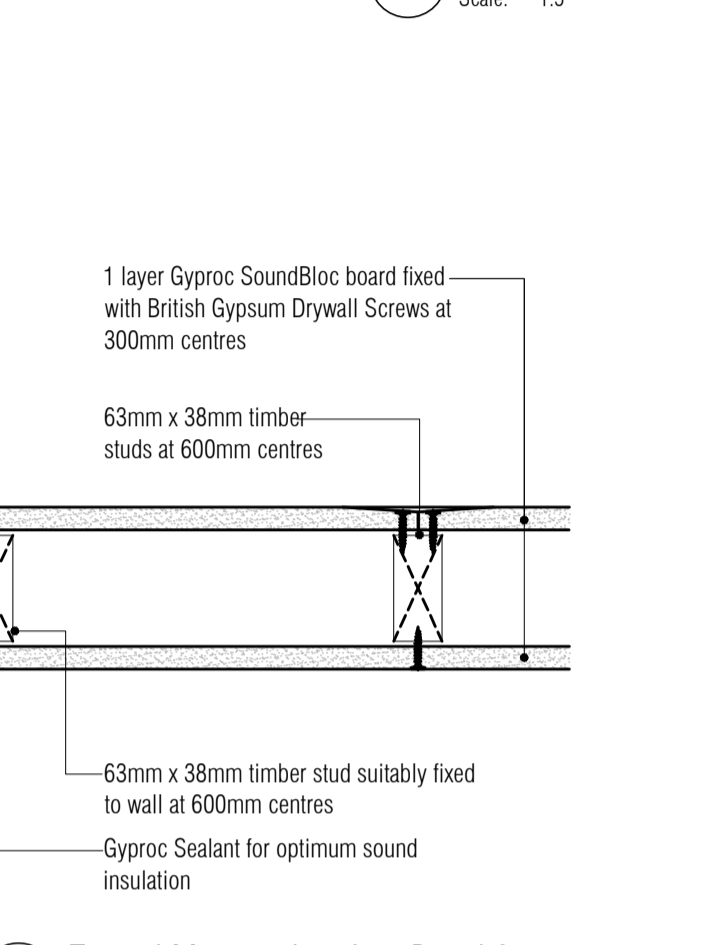
21 Typical "Wet" Room Head Detail
Scale: 1:5



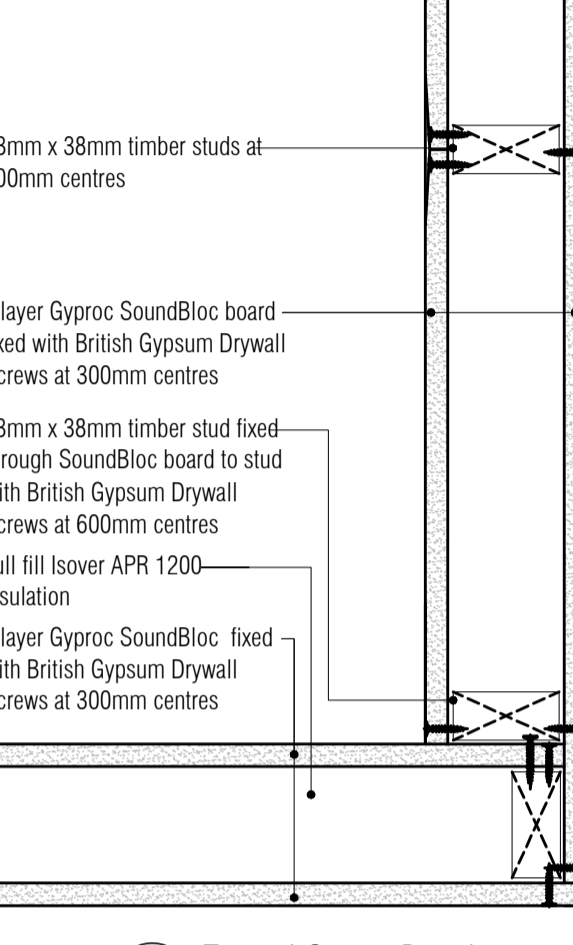
11 Typical T Intersection Plan Detail
Scale: 1:5



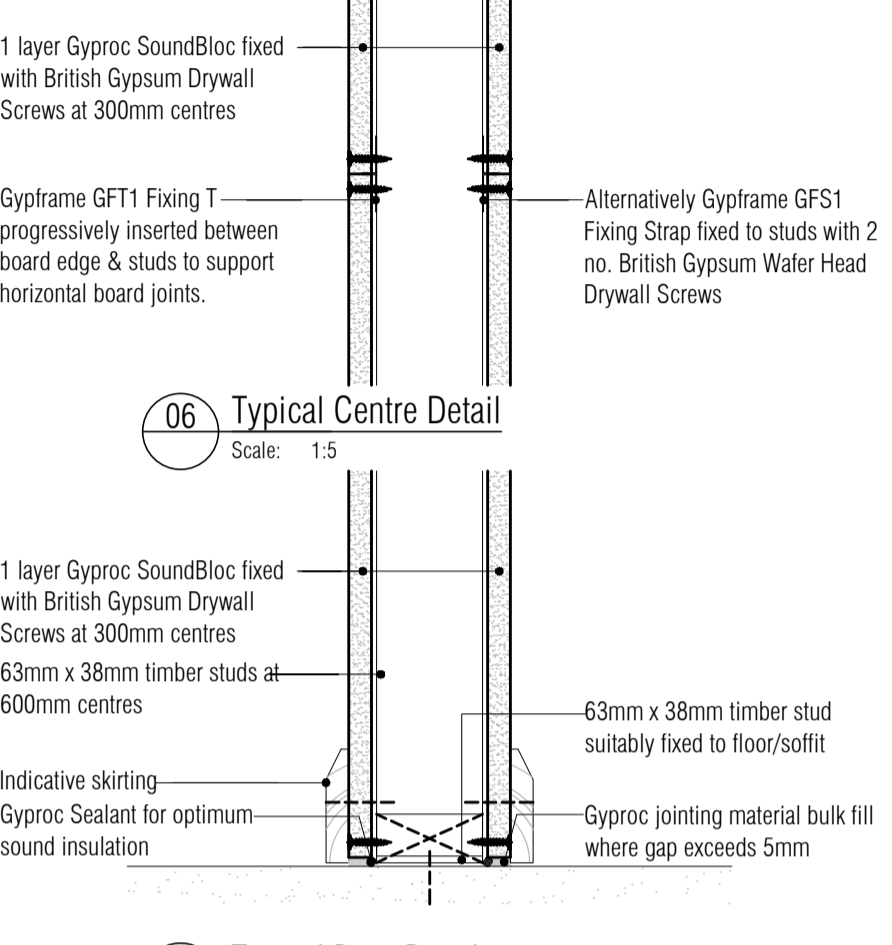
10 Typical Splay Intersection Plan Detail
Scale: 1:5



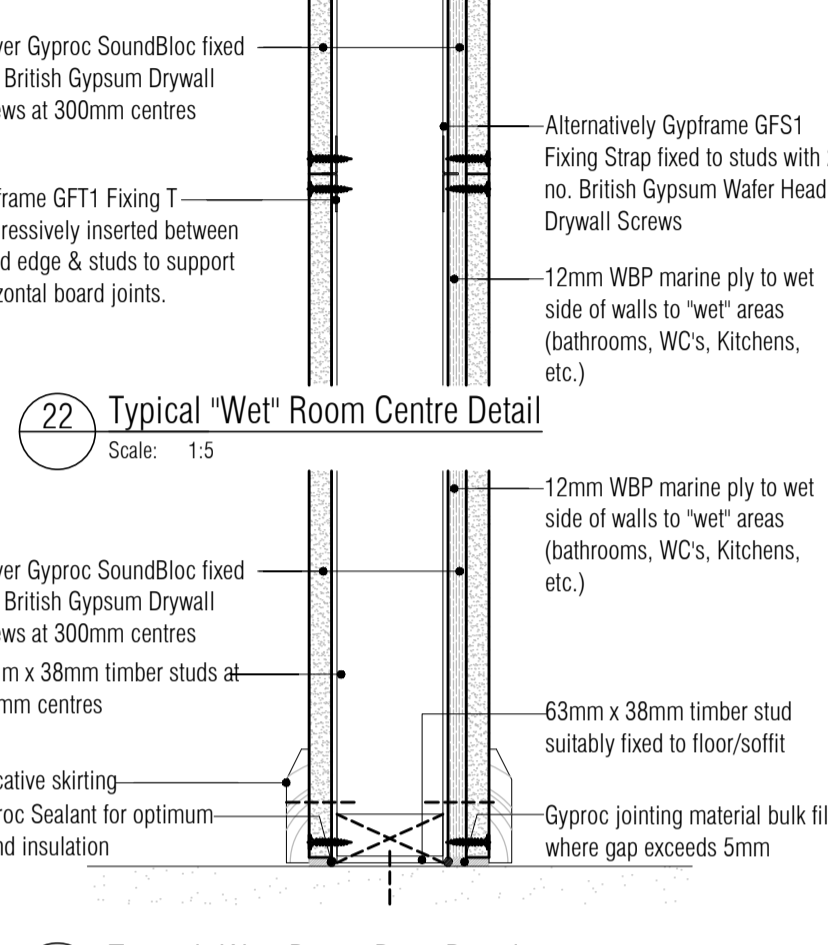
09 Typical Masonry Interface Detail 2
Scale: 1:5



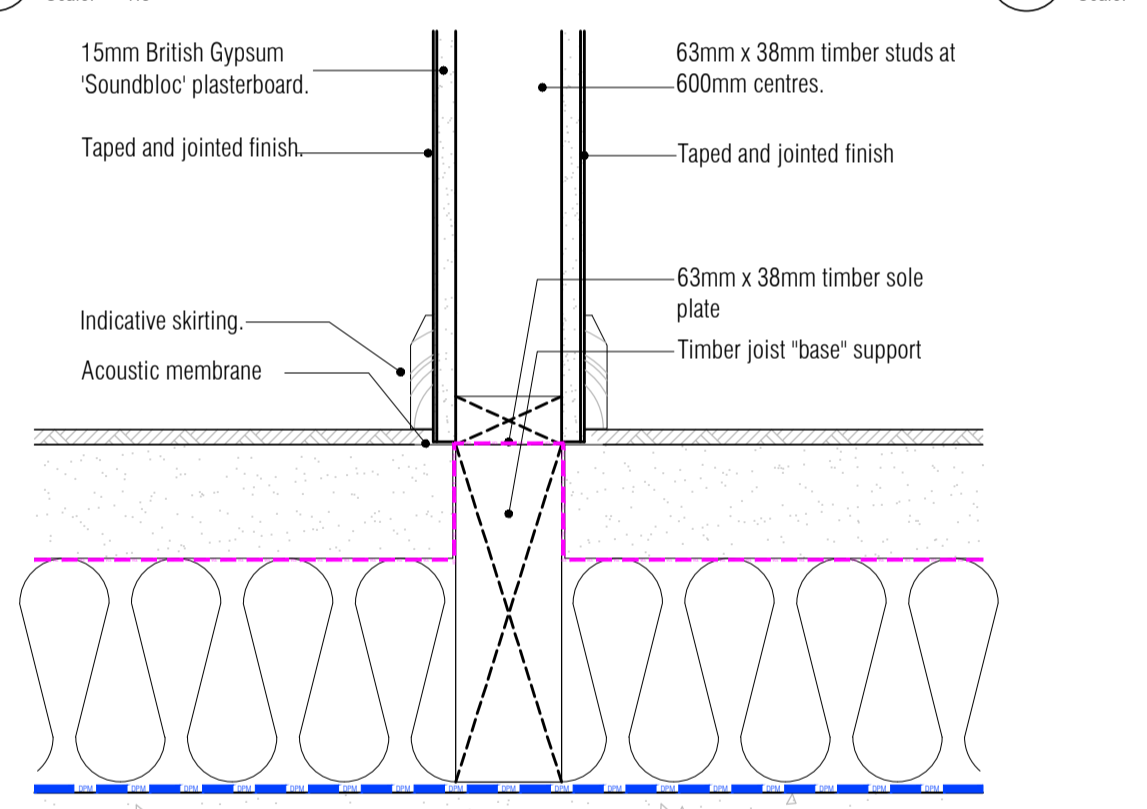
08 Typical Corner Detail
Scale: 1:5



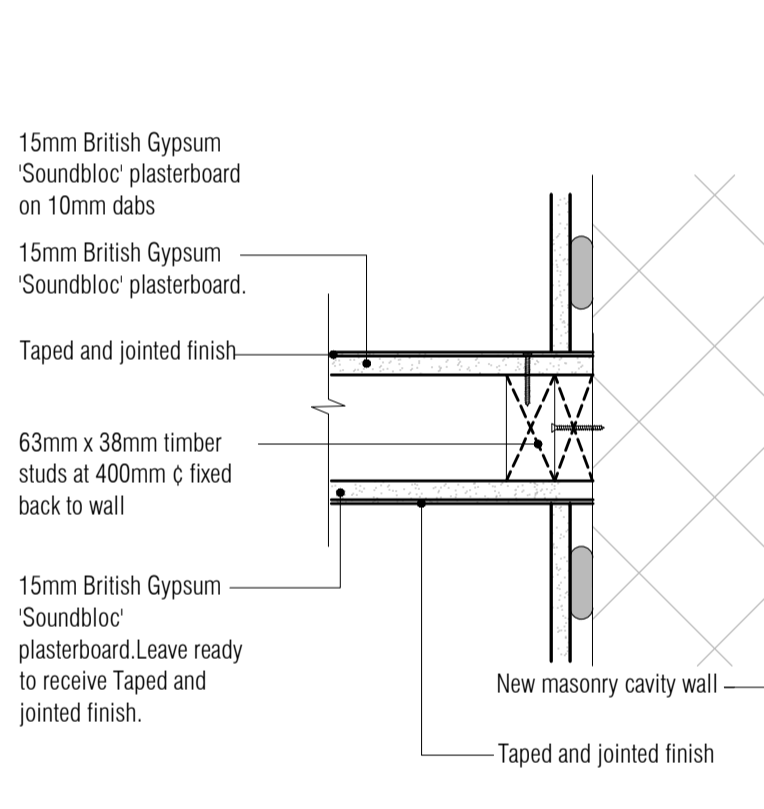
06 Typical Centre Detail
Scale: 1:5



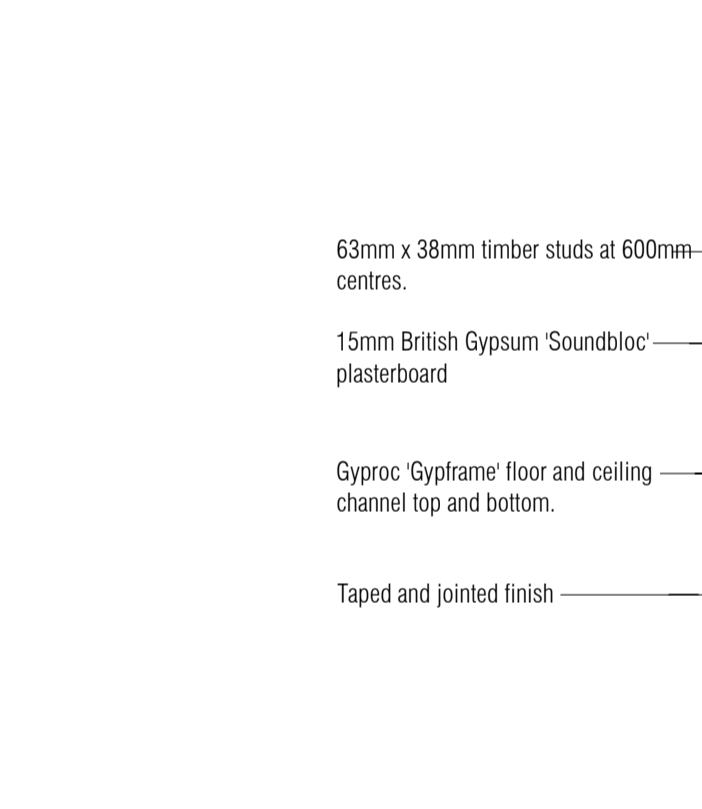
22 Typical "Wet" Room Centre Detail
Scale: 1:5



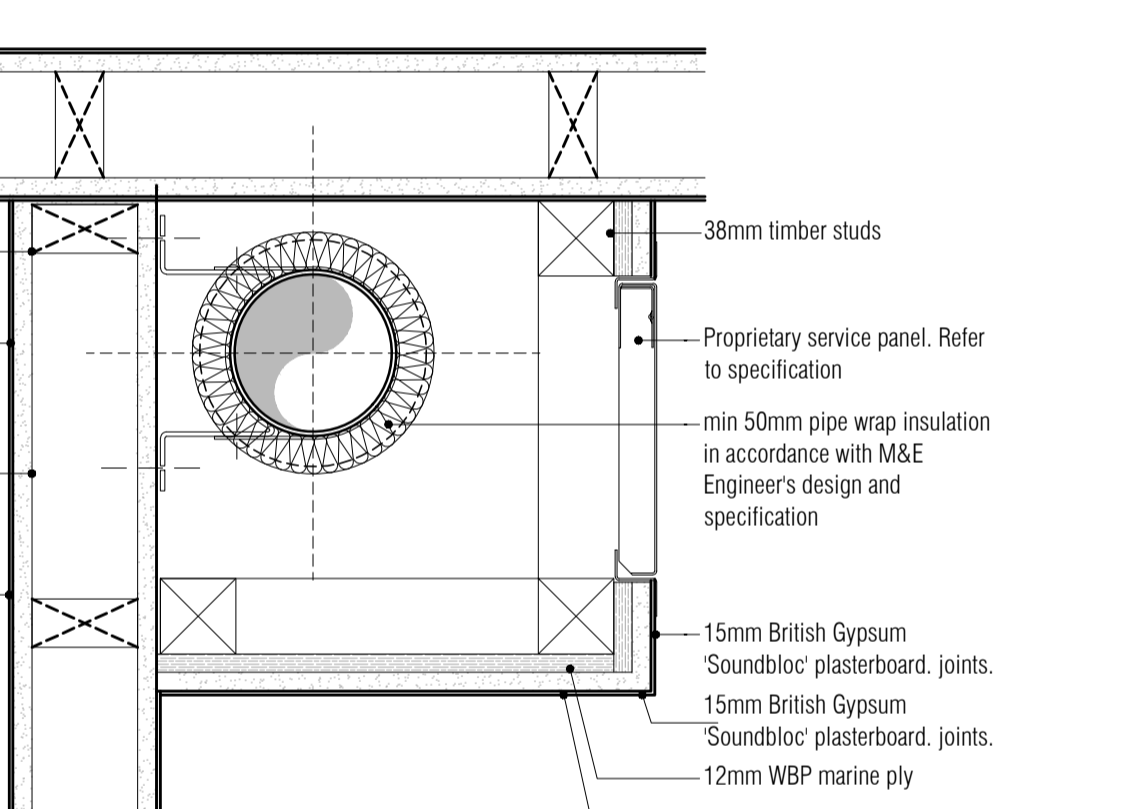
12 Typical Screed Break Sole Plate Detail
Scale: 1:5



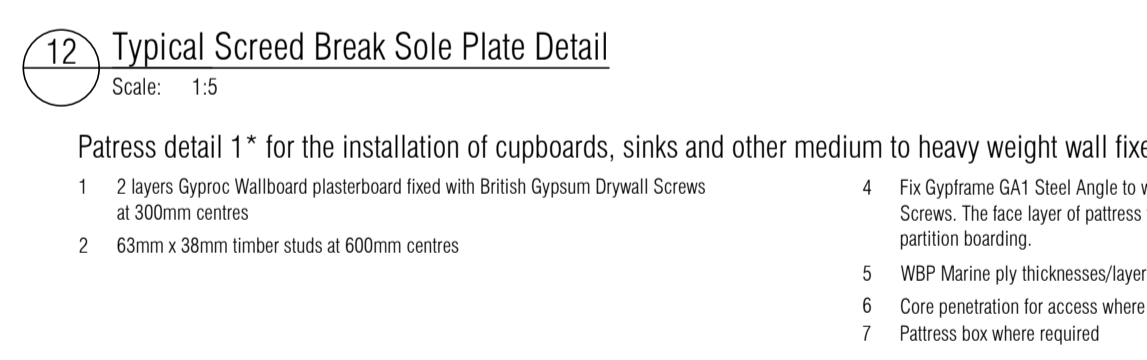
13 Typical Masonry/Dabbed Plasterboard Interface Detail
Scale: 1:5



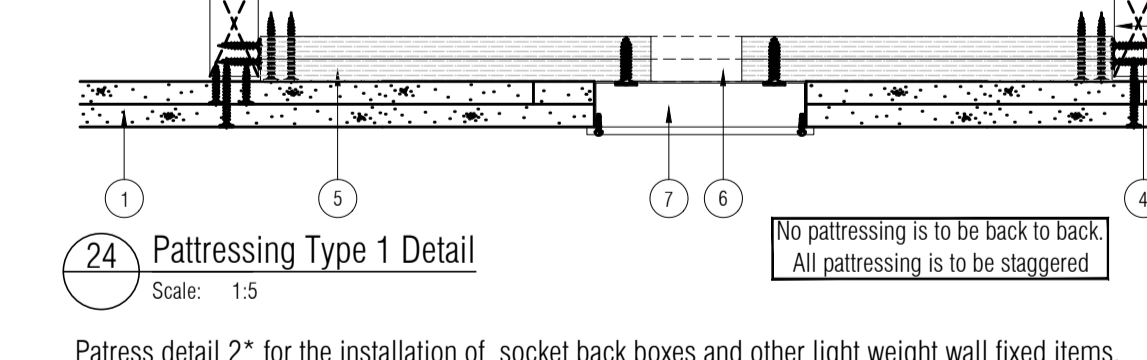
14 Typical Stud Wall Pipe Boxing Detail
Scale: 1:5



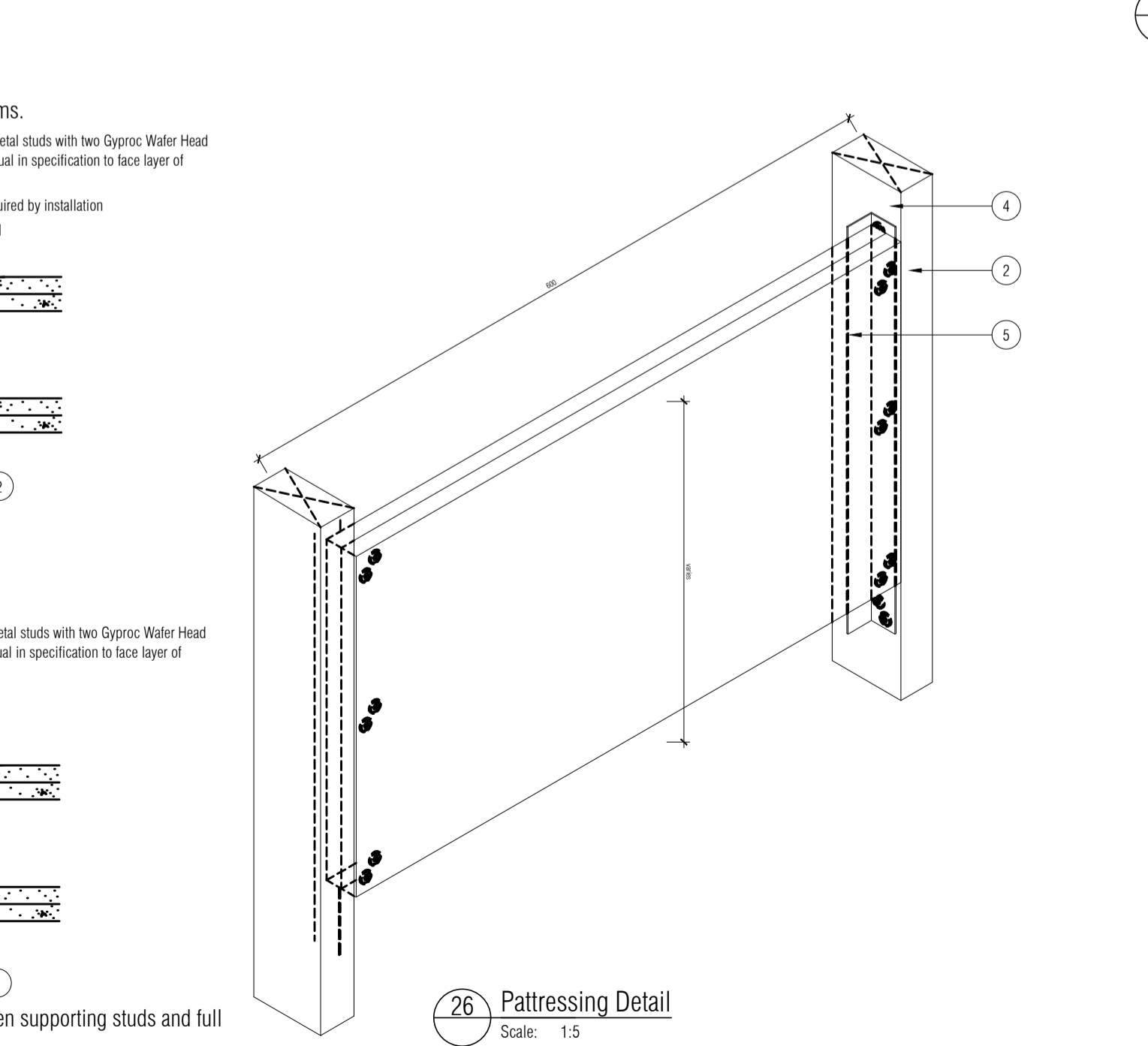
15 Typical Masonry Wall Pipe Boxing Detail
Scale: 1:5



24 Pattringing Type 1 Detail
Scale: 1:5



25 Pattringing Type 2 Detail
Scale: 1:5



26 Pattringing Detail
Scale: 1:5

Wall Types Legend

	Type A: External Wall. 102.5mm stretcher bond facing brickwork with 10mm mortar joints, 130mm full fill blown mineral wool fibre insulation, 100mm stretcher bond light weight concrete blockwork with 10mm mortar joints, finished internally with 15mm SoundBloc plasterboard on 10mm dabs
	Type B: Internal Party Wall. 100mm stretcher bond lightweight blockwork with 10mm mortar joints, 100mm full fill blown mineral wool fibre insulation, 100mm stretcher bond light weight concrete blockwork with 10mm mortar joints. Each side internally finished with 15mm SoundBloc plasterboard on 10mm dabs
	Type C: Internal Party Wall. 100mm stretcher bond lightweight blockwork with 10mm mortar joints, 100mm full fill blown mineral wool fibre insulation, 100mm stretcher bond light weight concrete blockwork with 10mm mortar joints. Each side internally finished with 15mm SoundBloc plasterboard on 10mm dabs
	Type D: Internal Timber Stud Wall. 63mm x 48mm timber studs at 400mmc with 15mm SoundBloc each side
	Type E: Internal Timber Stud Wall to bathrooms. 63mm x 48mm timber studs at 400mmc with 1 layer 12mm WBP ply to the 'wet' side and 15mm SoundBloc each side
	Type G: Internal Services Boxing Stud Wall. 63mm x 48mm timber stud at 400mmc with 1 layer 12mm WBP ply to the 'wet' side and 15mm SoundBloc one side
	Type H: Internal Timber Stud Wall. 63mm x 48mm timber studs at 400mmc with 1 layer 12mm WBP ply to the 'wet' side and 15mm SoundBloc one side

ISSUED FOR CONSTRUCTION

RDJW

ARCHITECTS



RDJW ARCHITECTS LIMITED
QUIN HOUSE . 9-11 EAST PARK
CRAWLEY . WEST SUSSEX . RH10 6AN
TEL: 01293 404300 . FAX: 01293 404299
EMAIL: info@rdjwarchitects.co.uk
WEBSITE: www.rdjwarchitects.co.uk

PROJECT
Housing Development
Springfield Hospital
Hebdon Road
Tooting

Proposed
Wall
Details

DATE	SCALE	
13.11.15	1:5 @ A1	
DRAWN	DRG. NO.	REV.
RKC	4720-510	C1
CHECKED		

NB: Fixing channel or plywood backing to span full width between supporting studs and full height of supported unit.