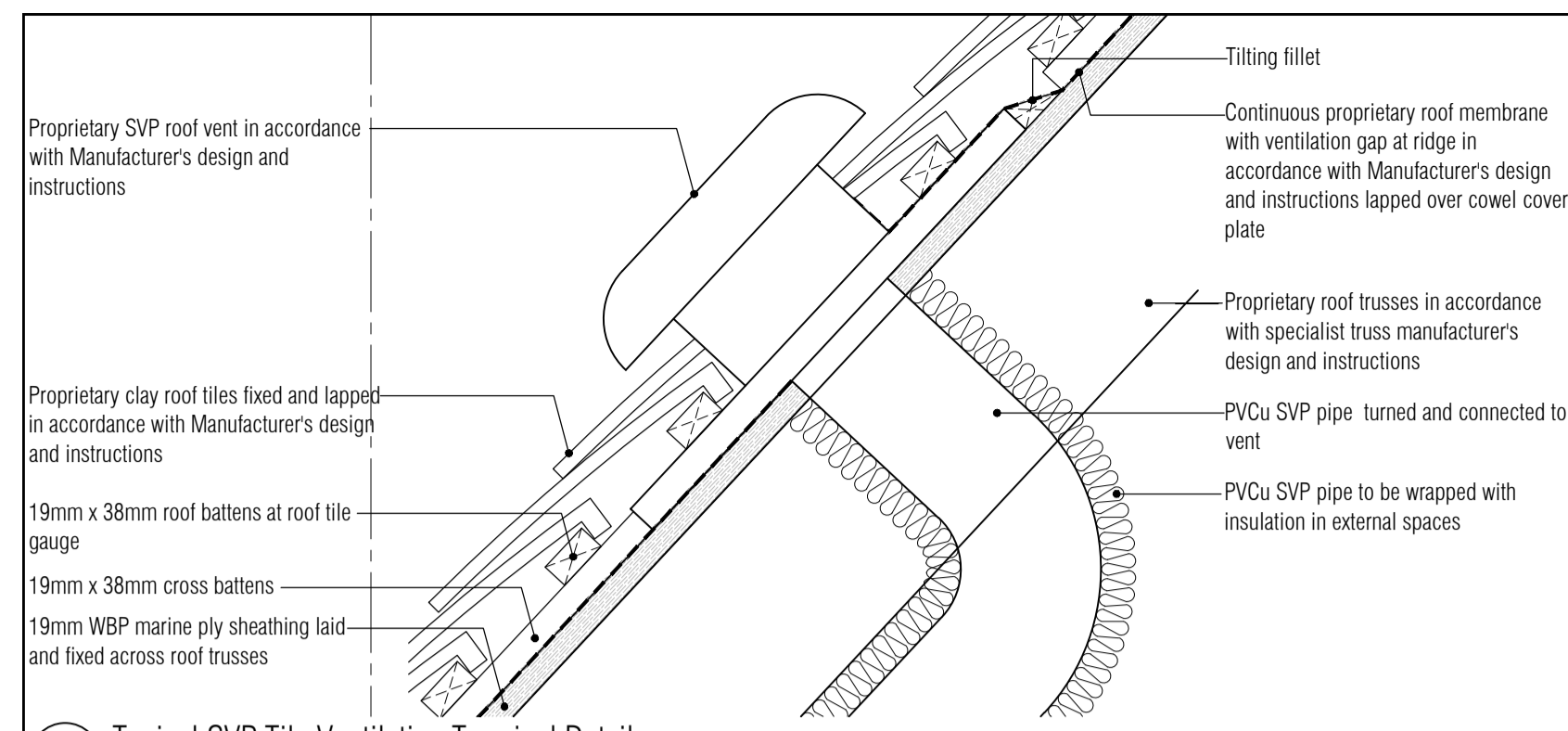
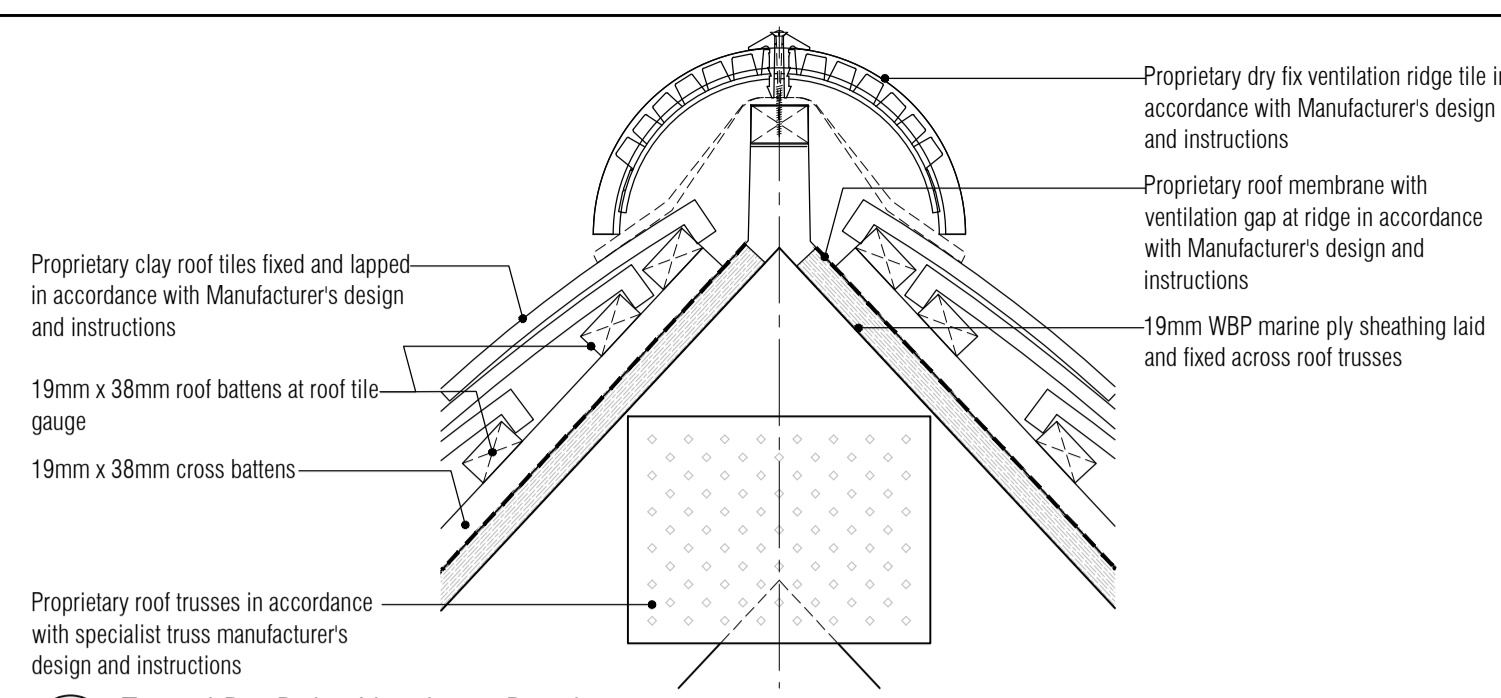


1. CONTRACTOR IS RESPONSIBLE FOR ALL SETTING OUT AND MUST CHECK DIMENSIONS ON SITE BEFORE WORK IS PUT IN HAND
2. WRITTEN DIMENSIONS ONLY TO BE TAKEN THIS DRAWING MUST NOT BE SCALED
3. ARCHITECT TO BE IMMEDIATELY NOTIFIED OF SUSPECTED OMISSIONS OR DISCREPANCIES

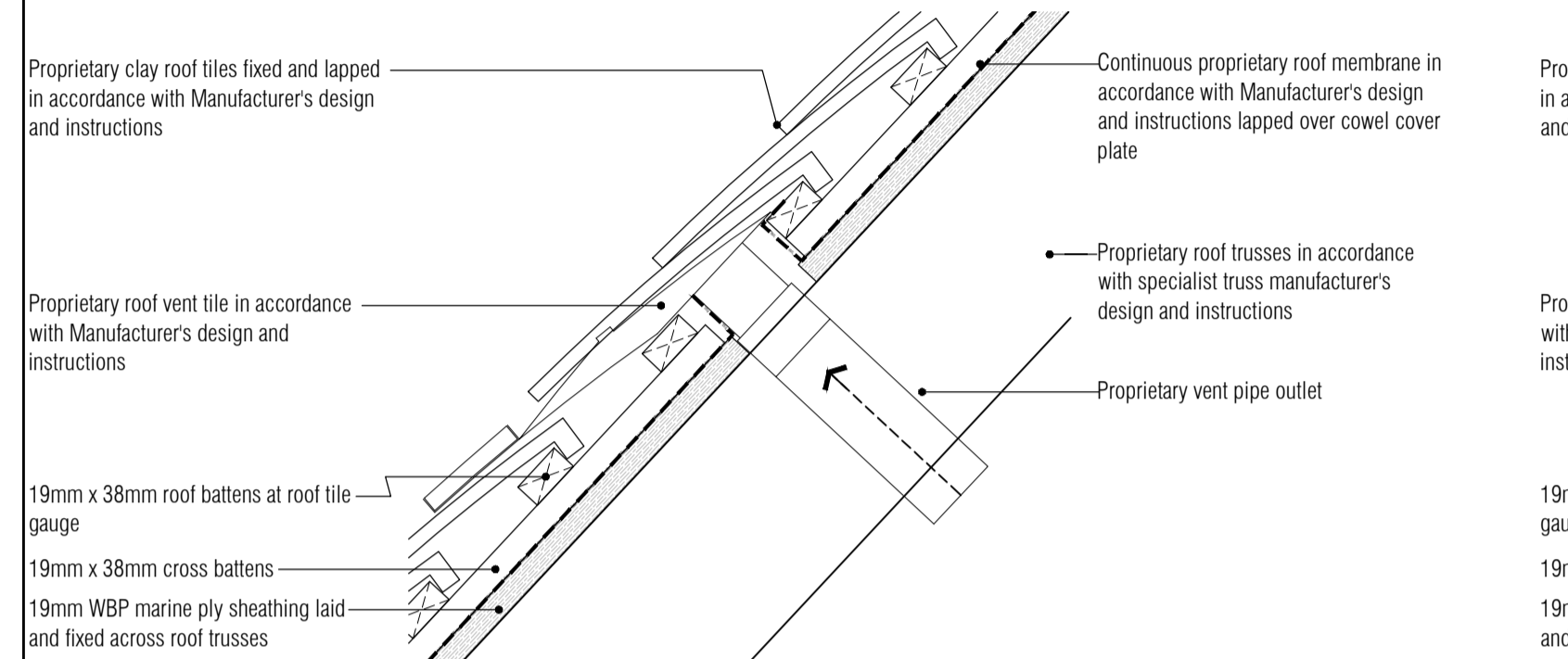
REVISIONS		
A	ISSUED FOR BUILDING REGS APPROVAL	04.05.16 rkc
B	Windows rev'd for planning	27.07.16 rkc
C	Threshold rev'd	04.08.16 dw



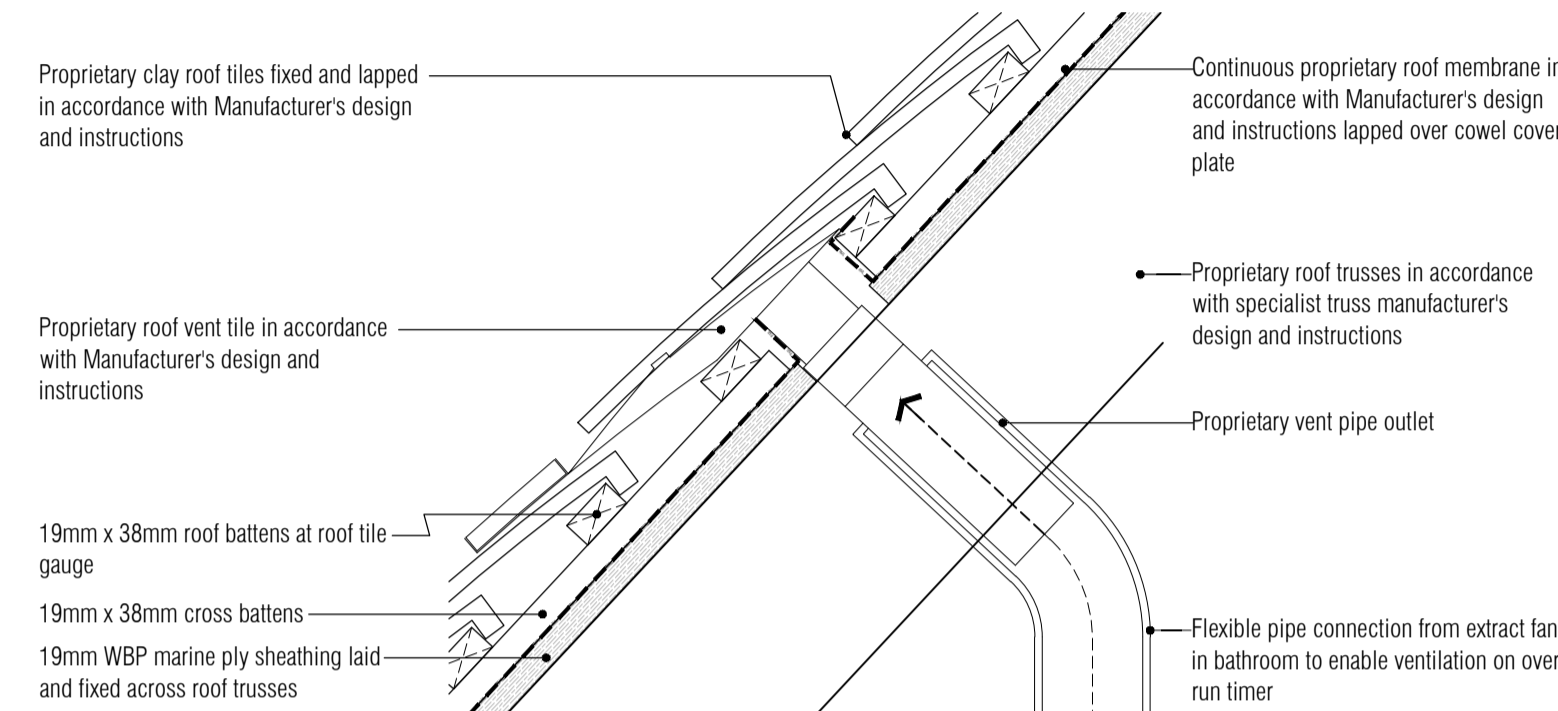
01 Typical SVP Tile Ventilation Terminal Detail
Scale: 1:5



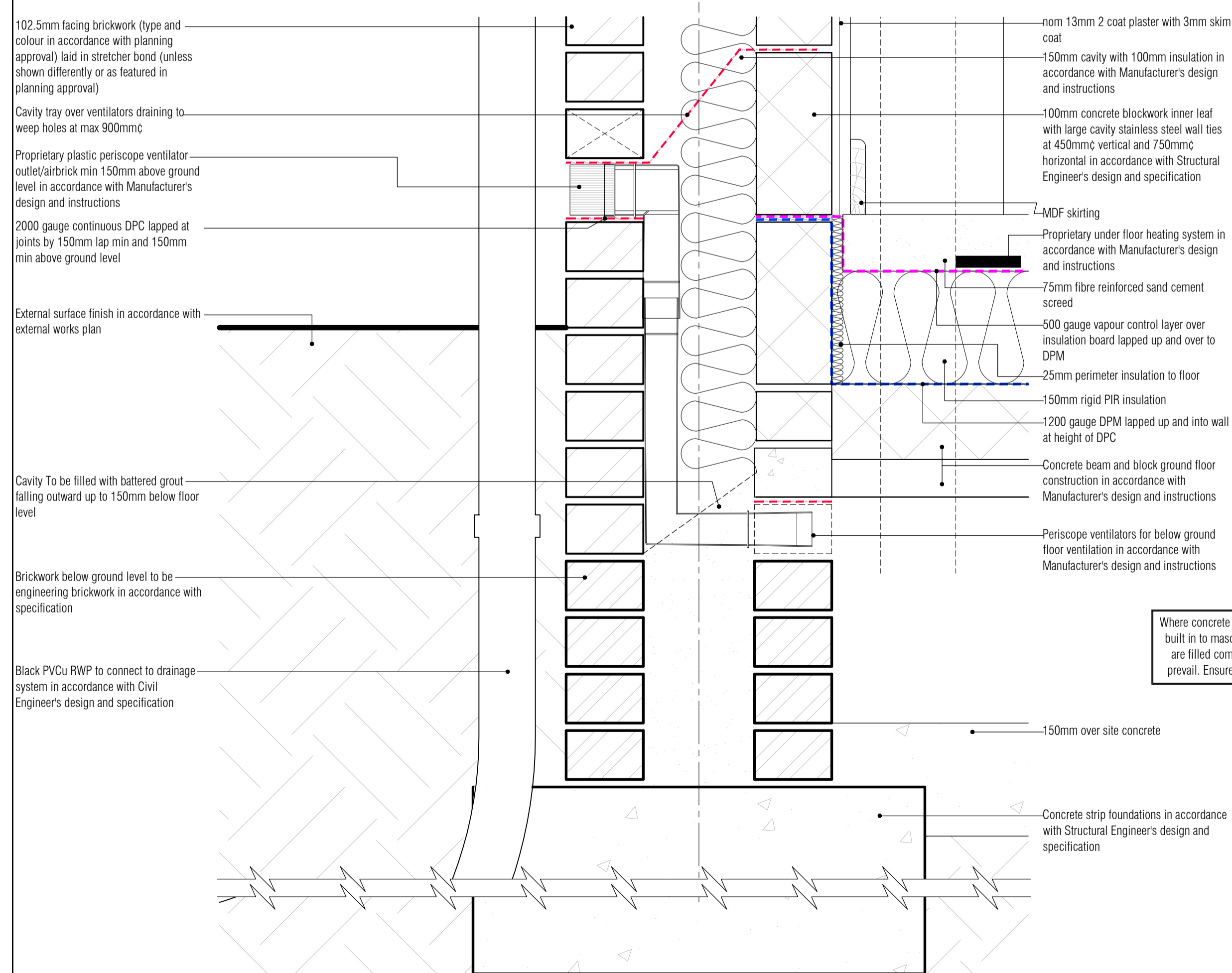
02 Typical Dry Ridge Ventilation Detail
Scale: 1:5



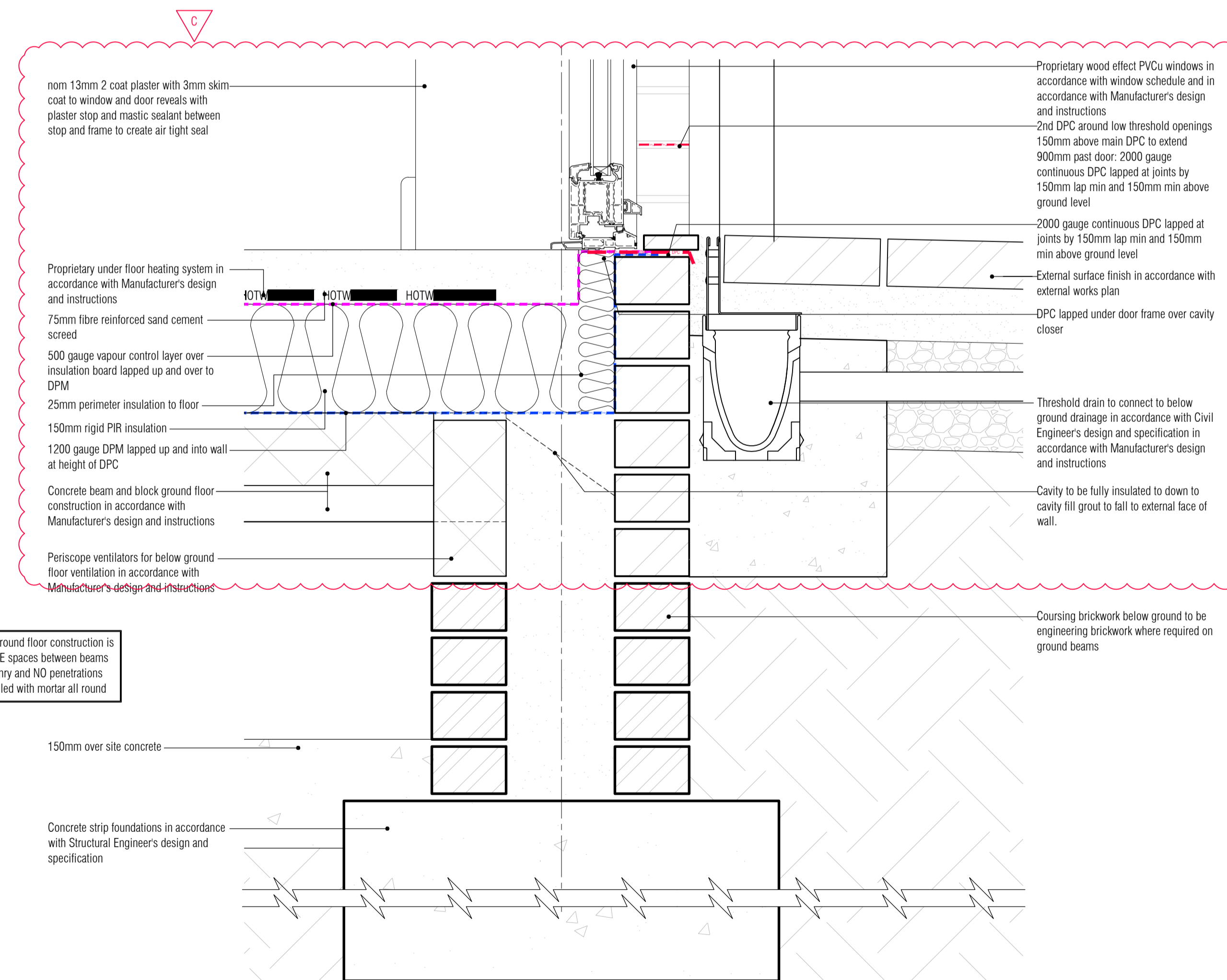
03 Typical Roof Void Hidden Tile Ventilation Terminal Detail
Scale: 1:5



06 Typical Extract Fan Roof Tile Ventilation Terminal Detail
Scale: 1:5



04 Typical Wall/Ground Floor/Foundation Detail
Scale: 1:5



05 Typical Level Threshold/Ground Floor/Foundation Detail
Scale: 1:5

Where concrete beam and block ground floor construction is built in to masonry walls, ENSURE spaces between beams are filled completely with masonry and NO penetrations prevail. Ensure beam ends are filled with mortar all round

CLIENT ISSUE

RDJW
ARCHITECTS



RDJW ARCHITECTS LIMITED
QUIN HOUSE . 9-11 EAST PARK
CRAWLEY . WEST SUSSEX . RH10 6AN
TEL: 01293 404300 . FAX: 01293 404299
EMAIL: info@rdjwarchitects.co.uk
WEBSITE: www.rdjwarchitects.co.uk

PROJECT
Devon House
Horsham Road
South Holmwood
RH5 4NG
Luminar
DEVELOPMENTS

Proposed
Ground Floor / Wall & Roof
Ventilator Details

DATE	04.04.16	SCALE	1:5 @ A1
DRAWN	RKC	DRG. NO.	4834-500
CHECKED		REV.	C