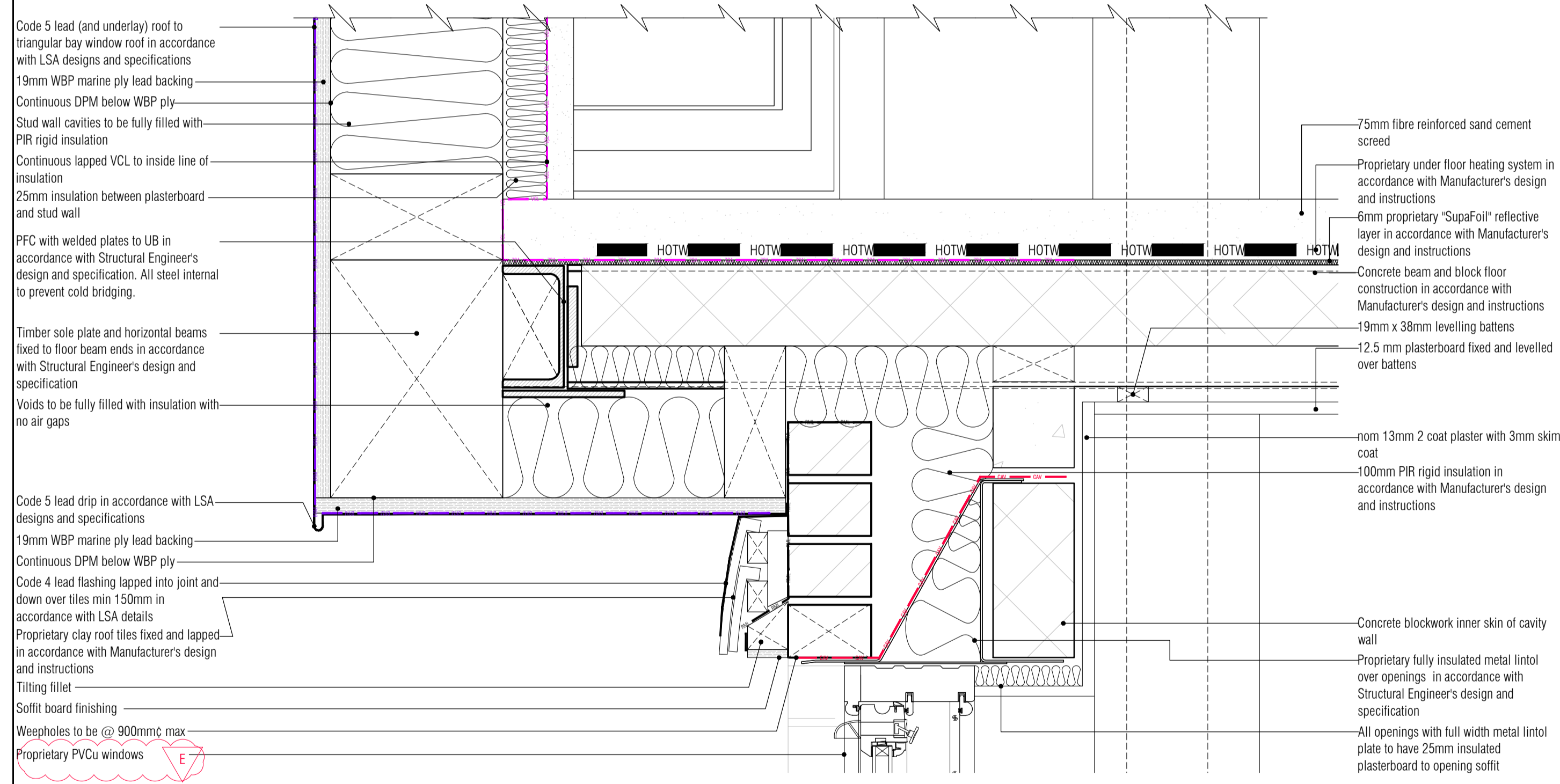
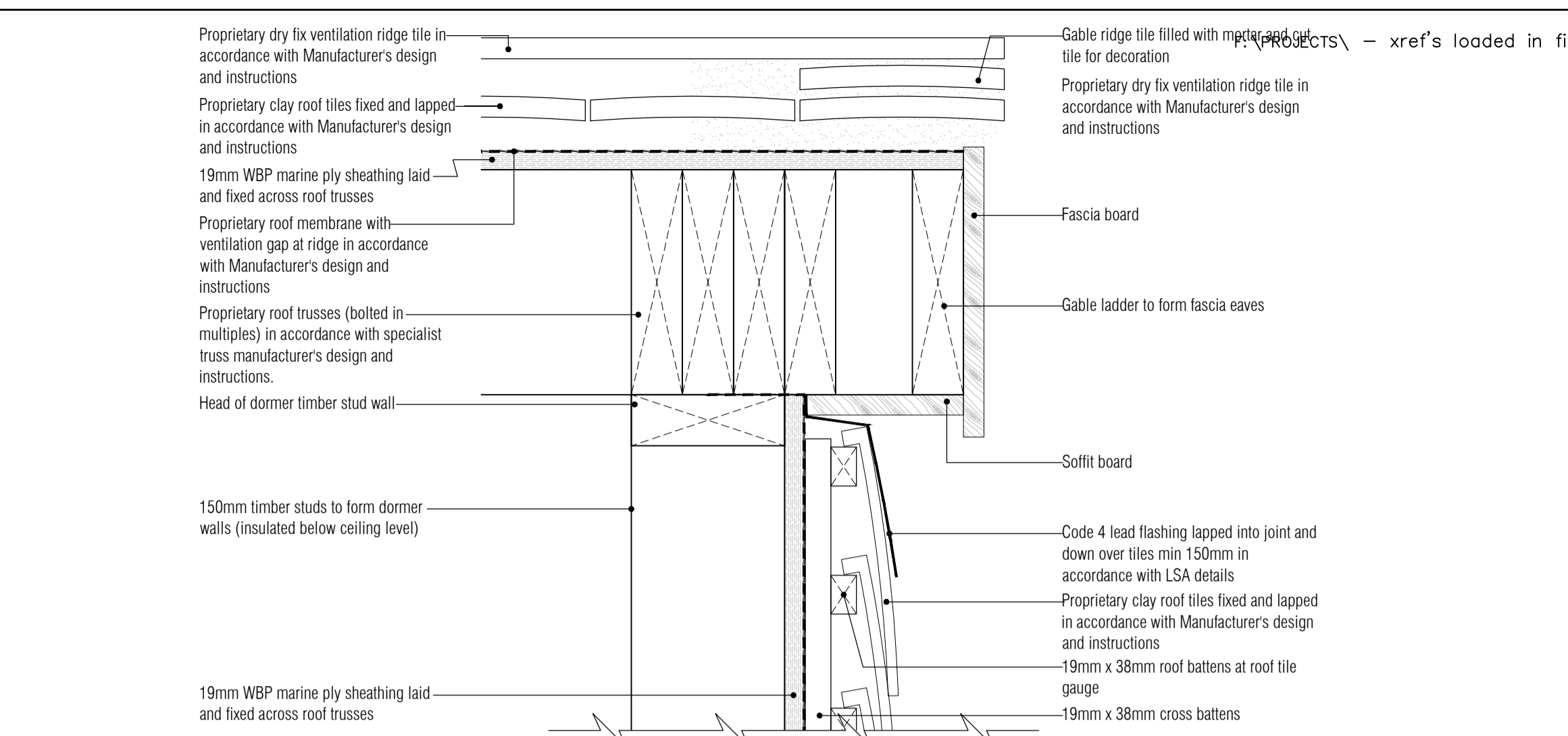


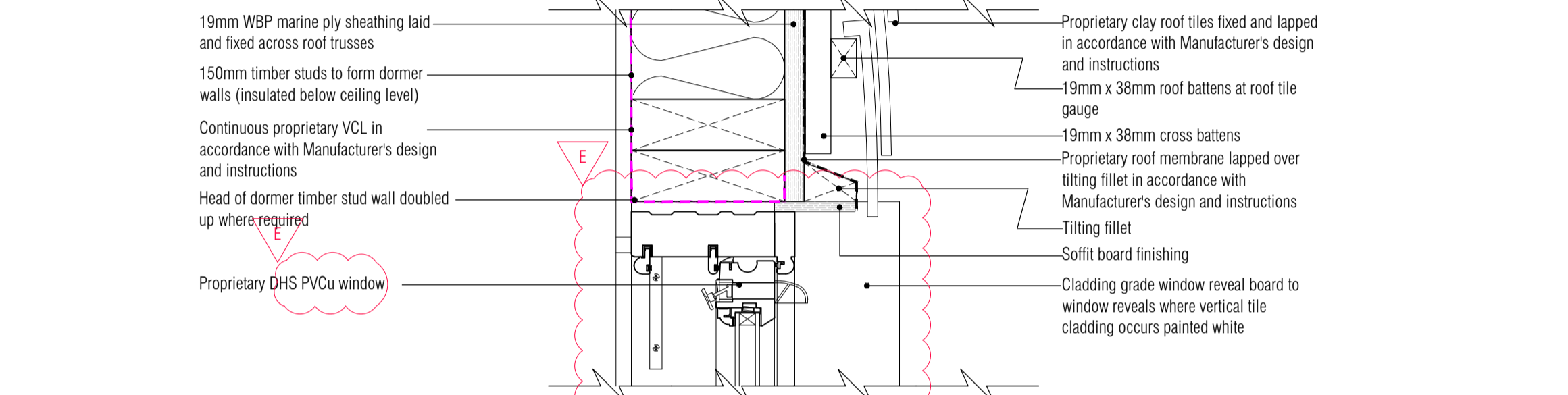
01 Typical Angular Bay Window Head / Roof Interface Detail
Scale: 1:5



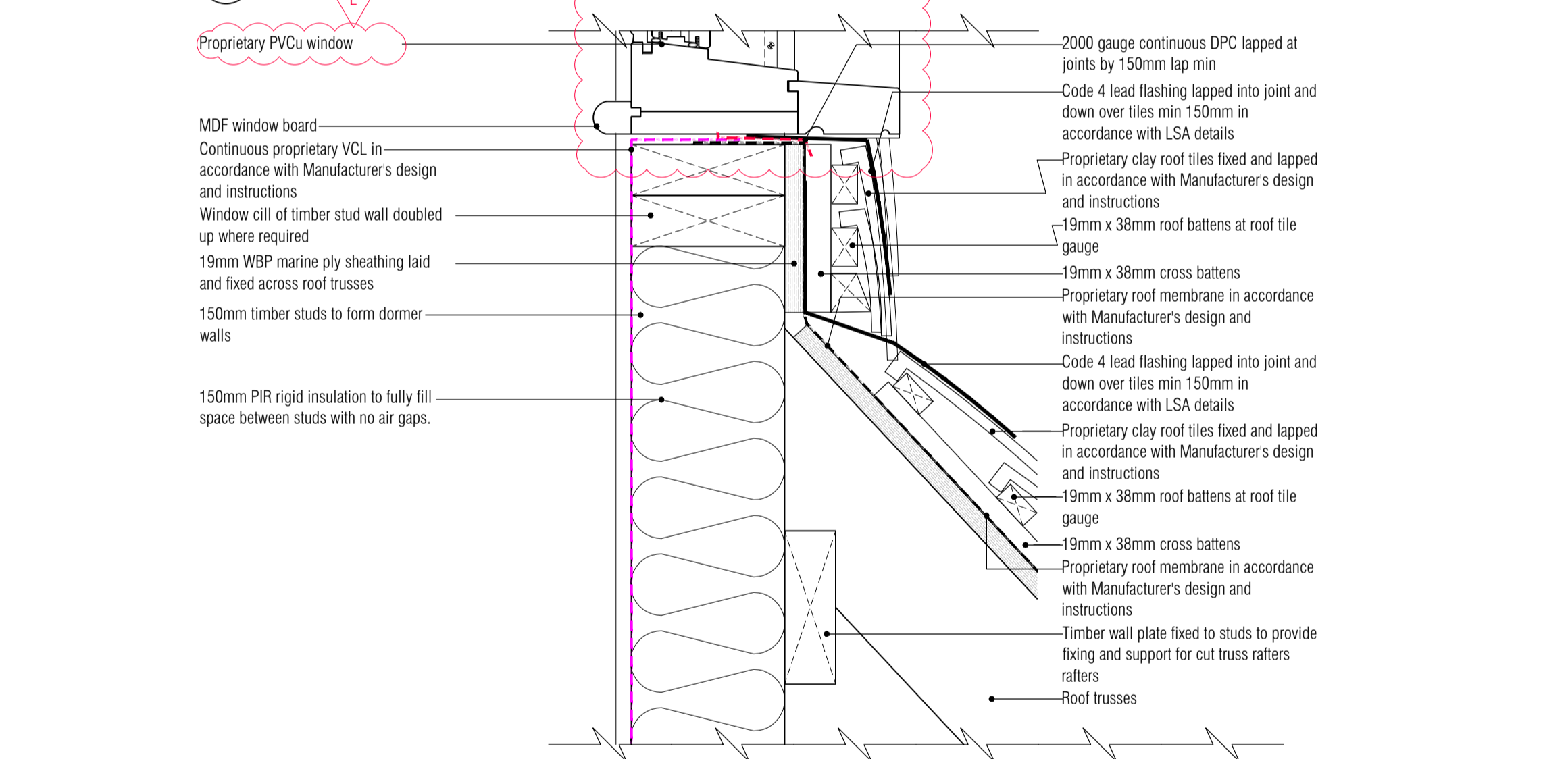
02 Typical Angular Bay Window Cill / Wall / Floor Interface Detail
Scale: 1:5



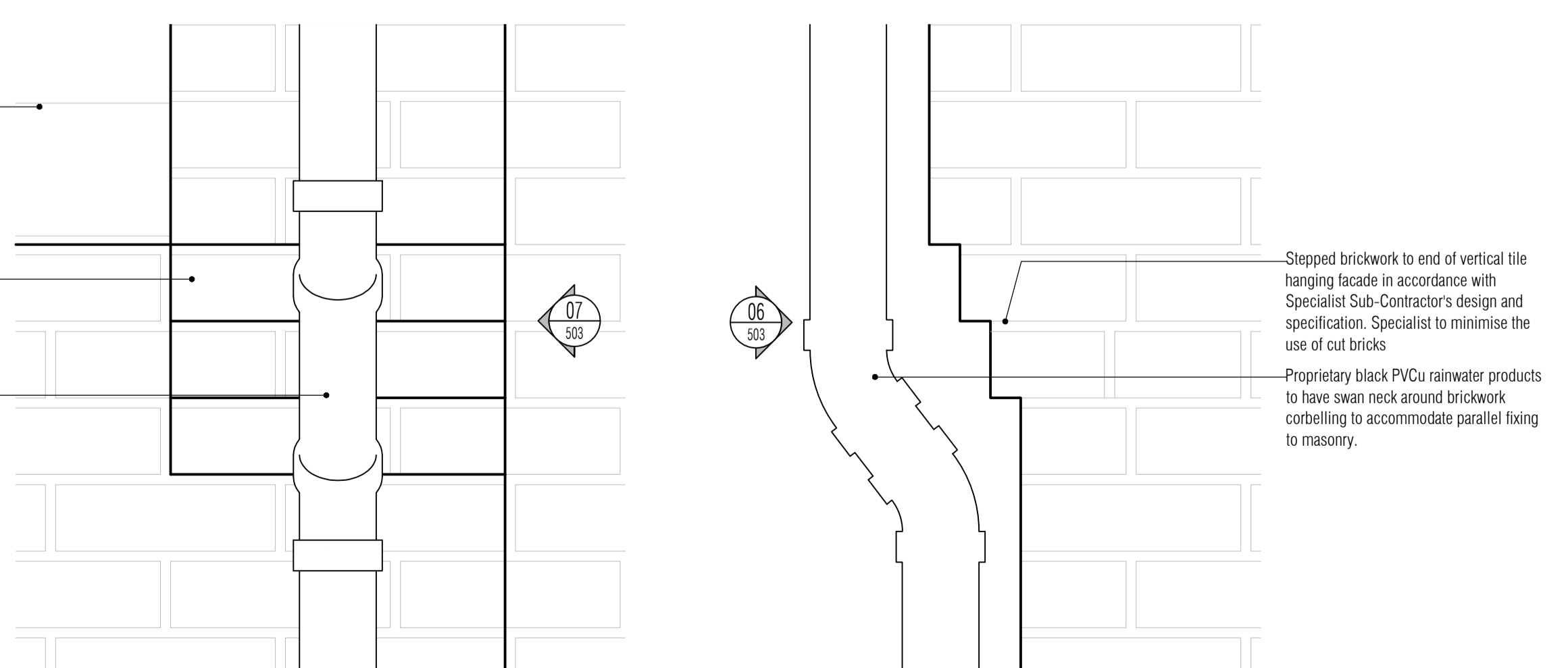
03 Typical Gable / Roof / Vertical Tile Hanging Interface Detail
Scale: 1:5



04 Typical Vertical Tile Hanging / Window Head / Timber Wall Detail
Scale: 1:5



05 Typical Vertical Tile Hanging / Roof / Window Cill Interface Detail
Scale: 1:5



06 Typical Brick Corbelling Elevational Detail
Scale: 1:5

07 Typical Brick Corbelling Sectional Detail
Scale: 1:5

1. CONTRACTOR IS RESPONSIBLE FOR ALL SETTING OUT AND MUST CHECK DIMENSIONS ON SITE BEFORE WORK IS PUT IN HAND
2. WRITTEN DIMENSIONS ONLY TO BE TAKEN THIS DRAWING MUST NOT BE SCALED
3. ARCHITECT TO BE IMMEDIATELY NOTIFIED OF SUSPECTED OMISSIONS OR DISCREPANCIES

| REVISIONS | | |
|-----------|-----------------------------------|--------------|
| A | ISSUED FOR BUILDING REGS APPROVAL | 04.05.16 RKC |
| B | Gen revs | 15.06.16 RKC |
| C | Vents added, SF info added | 27.06.16 RKC |
| D | Wires read for planning | 23.06.16 RKC |
| E | Trim wins to PVCu | 27.07.16 RKC |

ISSUED FOR PLANNING

RDJW
ARCHITECTS



RDJW ARCHITECTS LIMITED
QUIN HOUSE . 9-11 EAST PARK
CRAWLEY . WEST SUSSEX . RH10 6AN
TEL: 01293 404300 . FAX: 01293 404299
EMAIL: info@rdjwarchitects.co.uk
WEBSITE: www.rdjwarchitects.co.uk

PROJECT
Devon House
Horsham Road
South Holmwood
RH5 4NG
Luminar
DEVELOPMENTS

Proposed Feature Details

| | | | |
|---------|----------|----------|----------|
| DATE | 04.04.16 | SCALE | 1:5 @ A1 |
| DRAWN | RKC | DRG. NO. | 4834-503 |
| CHECKED | | REV. | E |