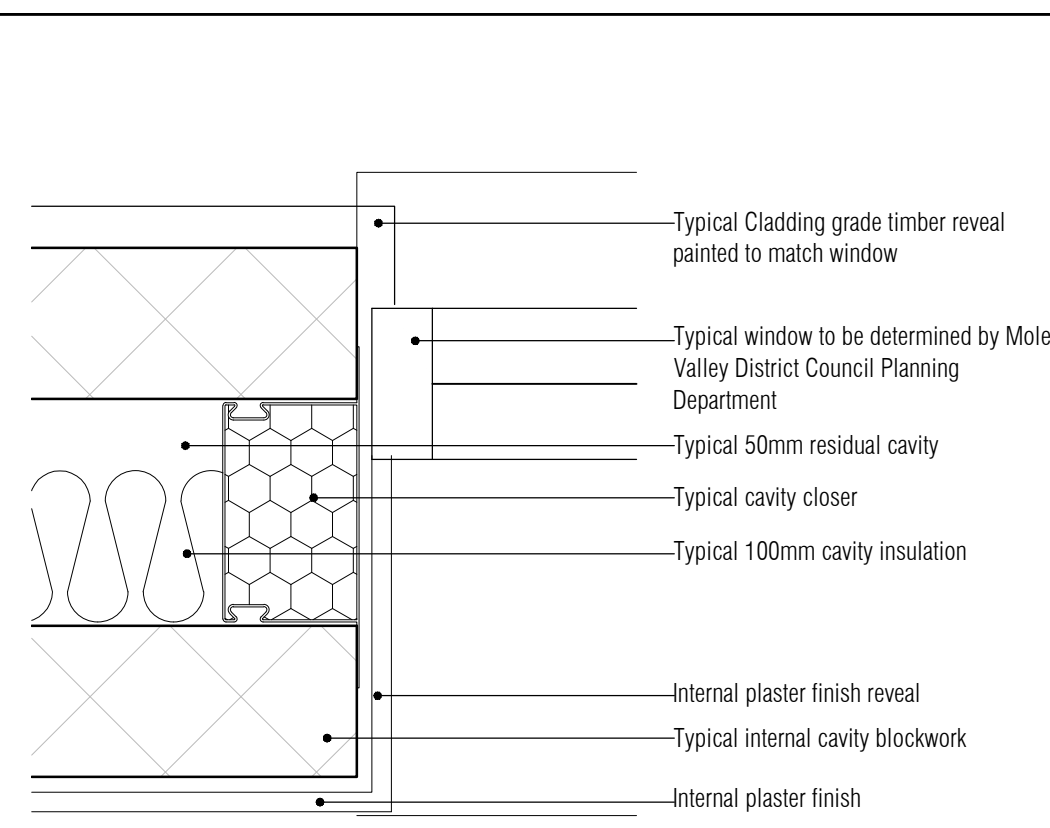
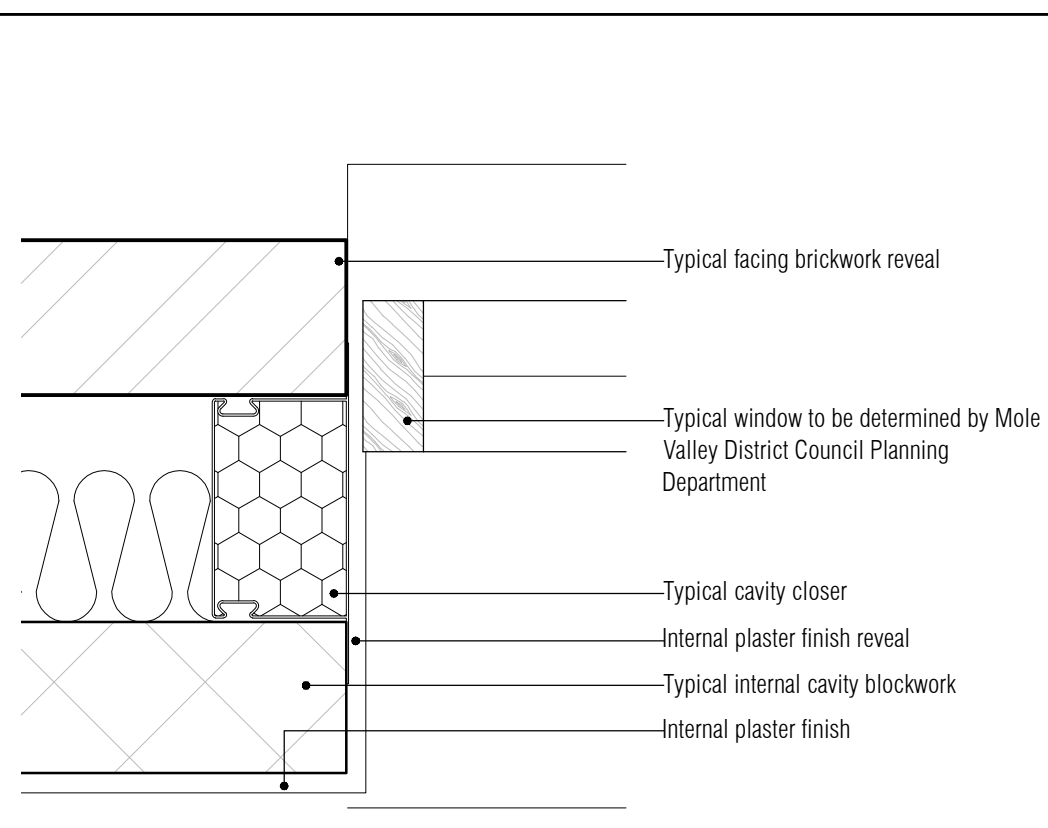


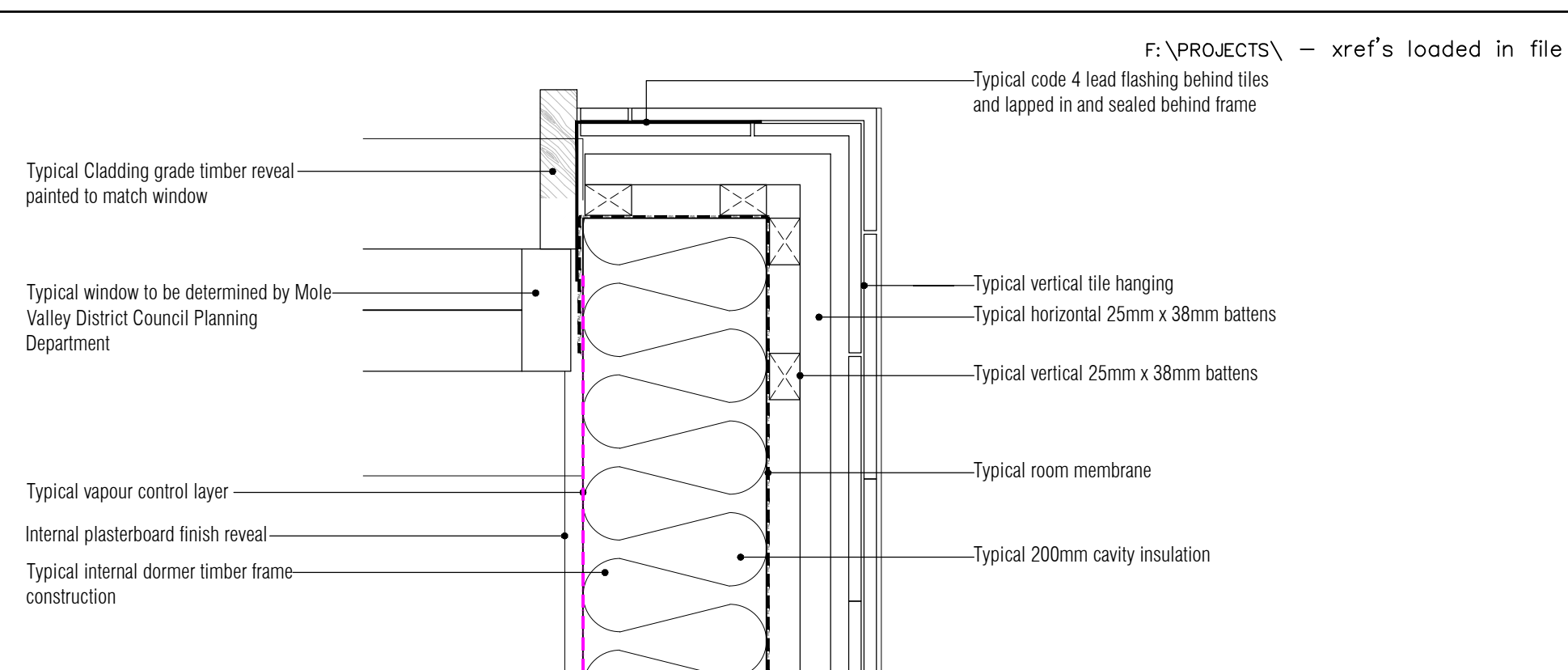
01 Typical Vertical Tile Hanging Reveal Detail
Scale: 1:5



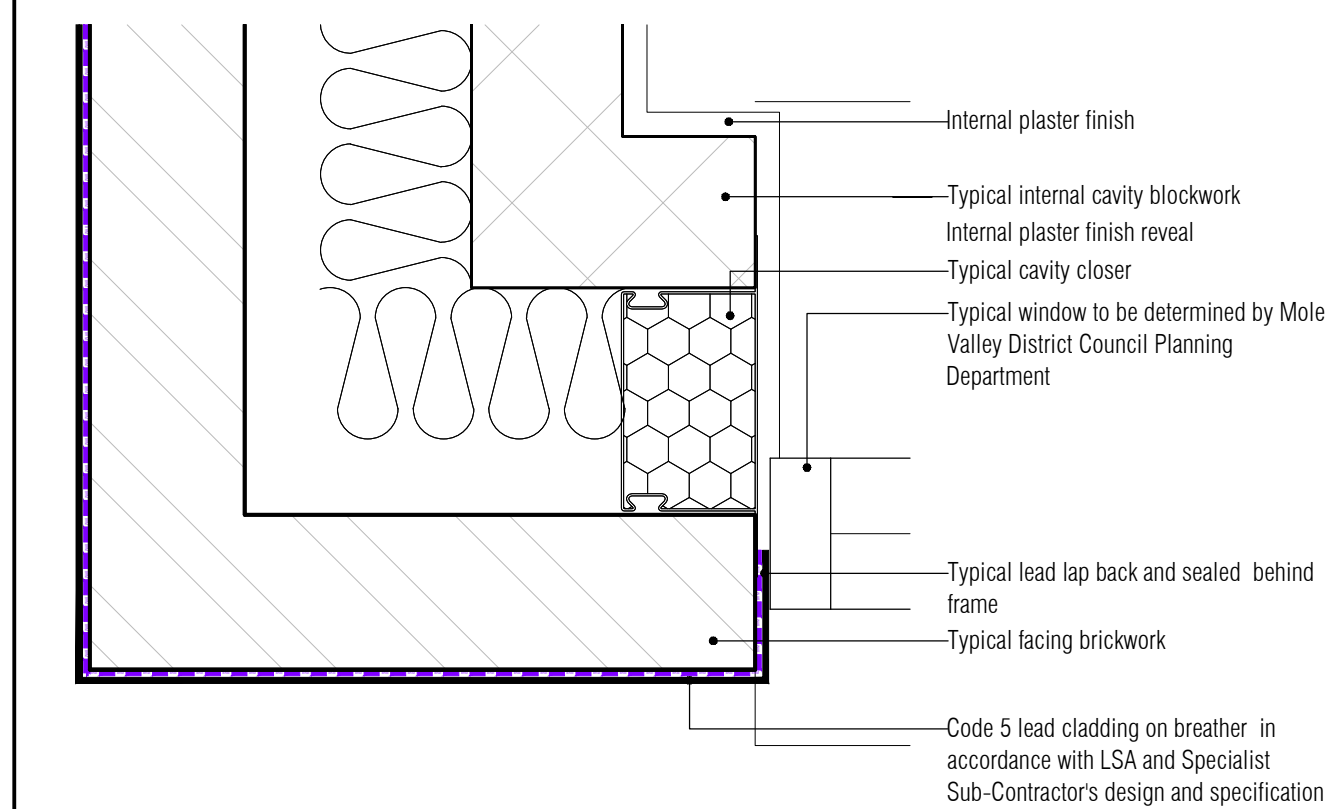
02 Typical Rendered Reveal Detail
Scale: 1:5



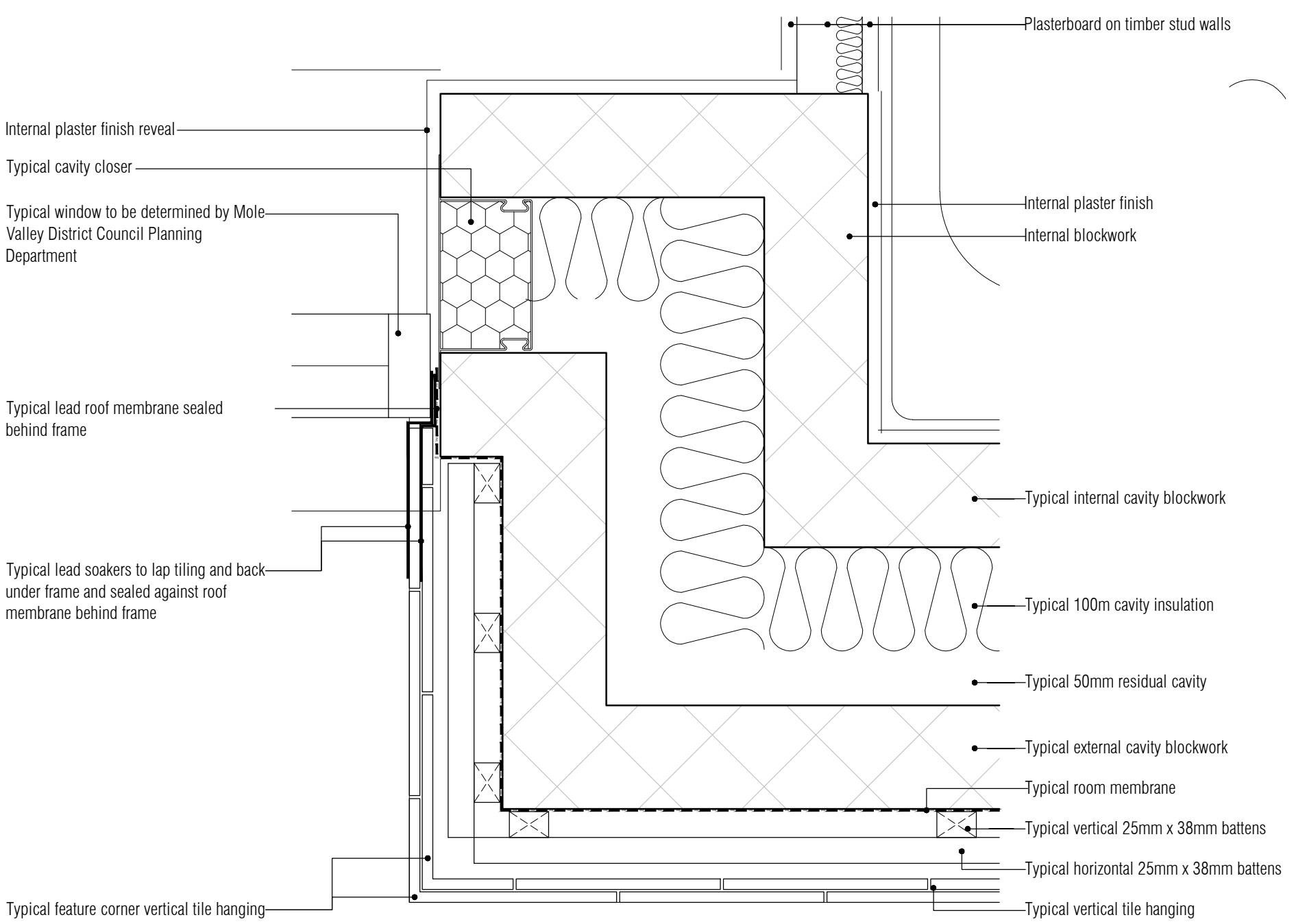
03 Typical Brickwork Reveal Detail
Scale: 1:5



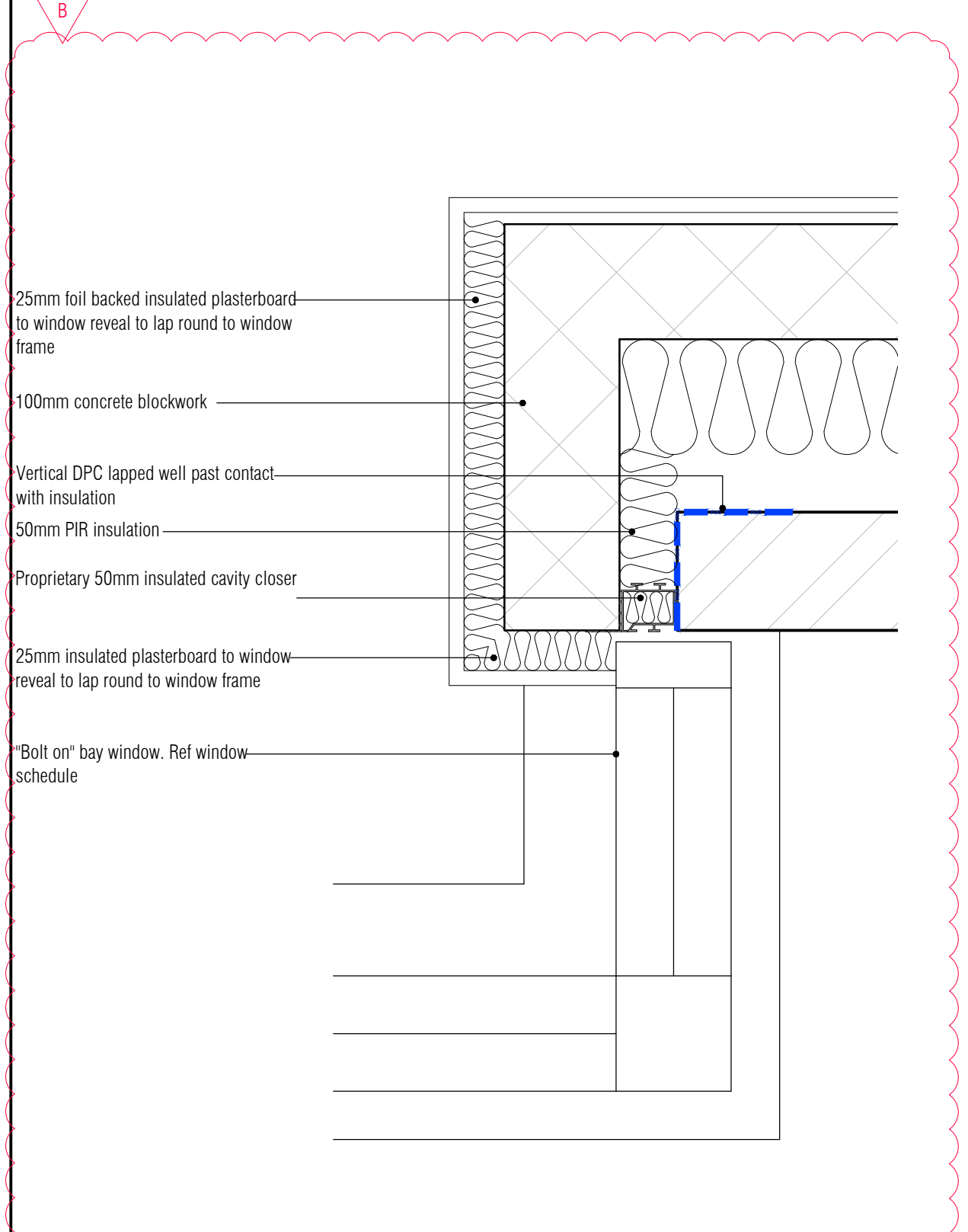
04 Typical Tiled Dormer Cheek Reveal Detail
Scale: 1:5



05 Typical Lead Cladding Reveal Detail
Scale: 1:5



06 Typical Vertical Tile Hanging Return Reveal Detail
Scale: 1:5



07 "Bolt on" Kitchen Bay Window Reveal Detail
Scale: 1:5

F:\PROJECTS\ - xref's loaded in file

- CONTRACTOR IS RESPONSIBLE FOR ALL SETTING OUT AND MUST CHECK DIMENSIONS ON SITE BEFORE WORK IS PUT IN HAND
- WRITTEN DIMENSIONS ONLY TO BE TAKEN THIS DRAWING MUST NOT BE SCALED
- ARCHITECT TO BE IMMEDIATELY NOTIFIED OF SUSPECTED OMISSIONS OR DISCREPANCIES

REVISIONS		
A	ISSUED FOR PLANNING APPROVAL	22.06.16 rkc
B	Det added	14.10.16 rkc

BUILDING
REGS ISSUE

RDJW
ARCHITECTS



RDJW ARCHITECTS LIMITED
QUIN HOUSE . 9-11 EAST PARK
CRAWLEY . WEST SUSSEX . RH10 6AN
TEL: 01293 404300 . FAX: 01293 404299
E M A I L : info@rdjwarchitects.co.uk
W E B S I T E : www.rdjwarchitects.co.uk

PROJECT
Devon House
Horsham Road
South Holmwood
RH5 4NG

Luminar
DEVELOPMENTS

Proposed
Window Reveals
Details

DATE	06.06.16	SCALE	1:5 @ A1
DRAWN	RKC	DRG. NO.	4834-505
CHECKED		REV.	B