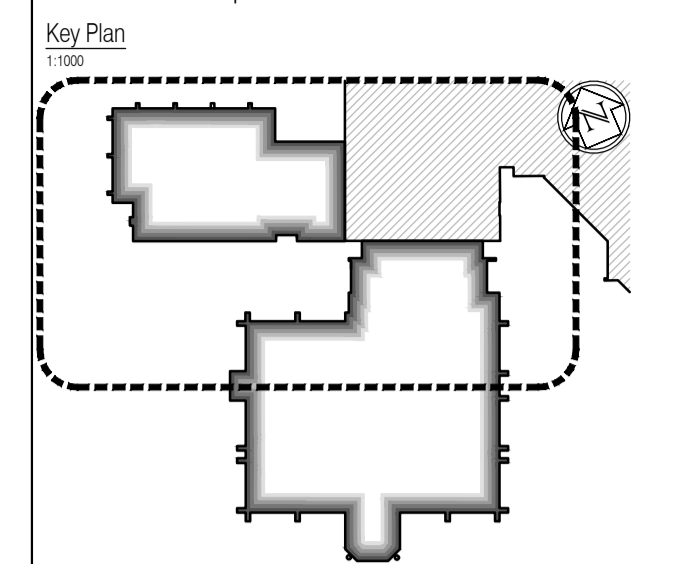
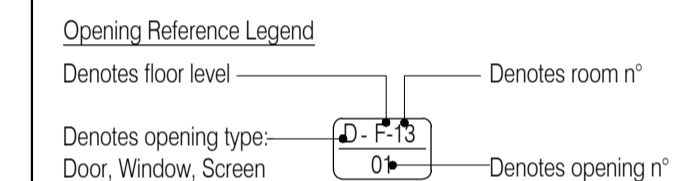


NOTES: Do not scale this drawing. All dimensions to be checked on site prior to commencement or manufacture.



- General Notes**
- All secondary steel to be in accordance with Manufacturer's design, details and specification.
 - All concrete / steelwork shown indicative sizes / locations only.
 - All concrete / steelwork to be confirmed by Structural Engineer.
 - All structural information generally to be in accordance with Structural Engineer's design, details and specification.
 - All mechanical, electrical, plumbing and ventilation information to be in accordance with Mechanical and Electrical Engineer's design, details and specification.
 - Some insulation omitted for clarity. Refer to partition detail drawings for details.
 - Roof Fall Arrest System is required and shall be the responsibility of the Roofing Contractor. System to be installed in accordance with Manufacturer's design and specifications.



AS BUILT DRAWING

NB: - Solid gray hatch denotes existing building fabric.

Rev	Date	By	Chk	Comment

BRINGING IDEAS TO LIFE

FRANKHAM

Frankham Consultancy Group Limited
 21 Perryman Road
 Heywards Heath RH16 3TP
 t 01444 444900 f 01444 455642
 enquiry@frankham.com
 www.frankham.com

Client

WILLMOTT DIXON CONSTRUCTION

Project Title

Wealden District Council
 Hailsham Head Quarters
 Refurbishments and Alterations

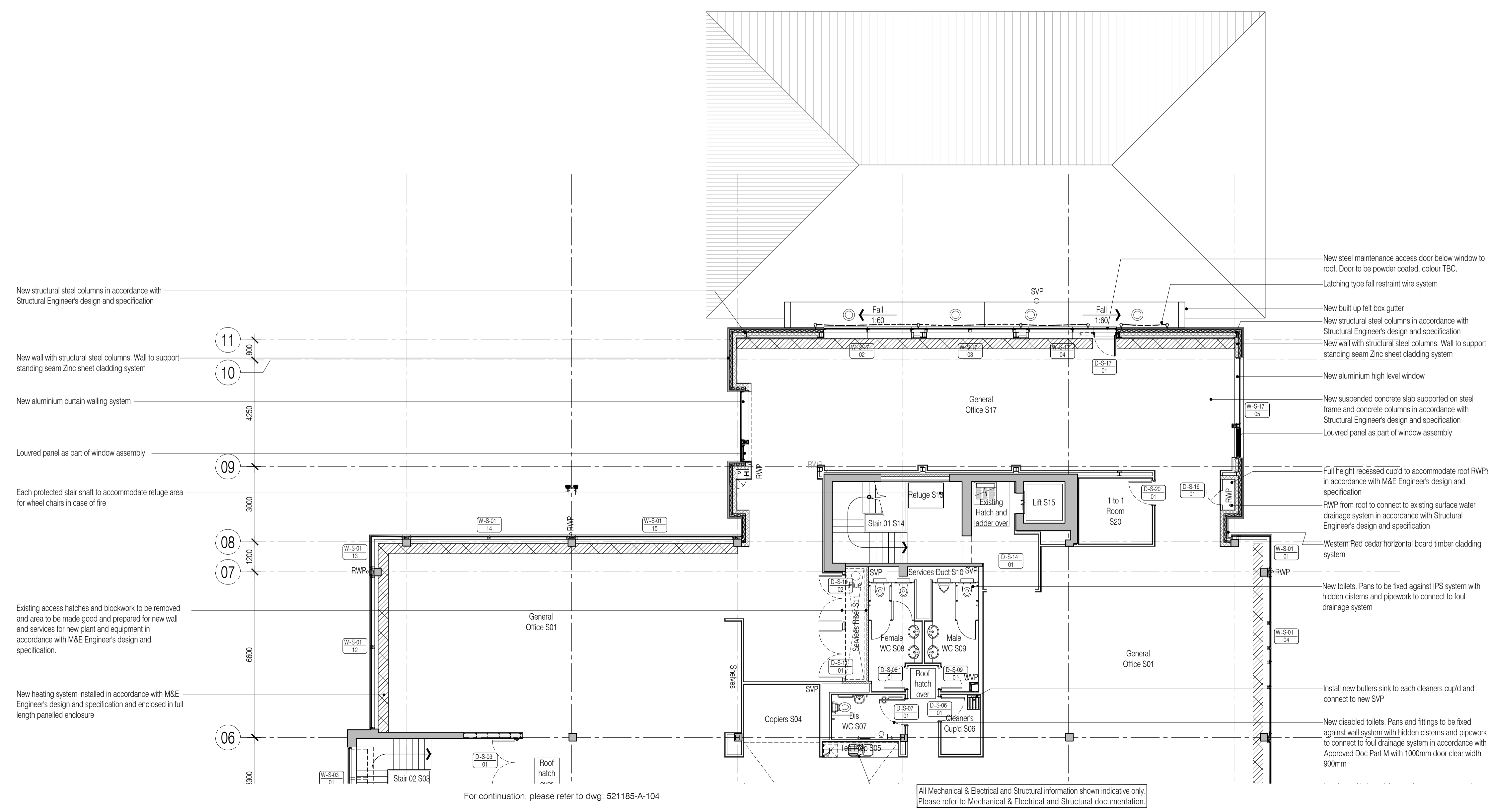
Drawing Title

Proposed Second Floor Plan
 Community Hall Building and Link Block

Drawn by: RKC	Scale: 1:100@A1	Date: 22.11.10
Designed by: FCG	Checked by: JAS	Approved by: AC

File Ref.: X:\FRANKHAM\2010\210116\WEALDEN\DOCH\02_16_LOCATION_PLAN_RKC.dwg
 02/10/10 14:05:25 - 2010/11/16 11:16:01

Drawing No. 521185-A-105	Rev. -
------------------------------------	-----------



- New structural steel columns in accordance with Structural Engineer's design and specification
- New wall with structural steel columns. Wall to support standing seam Zinc sheet cladding system
- New aluminium curtain walling system
- Louvre panel as part of window assembly
- Each protected stair shaft to accommodate refuge area for wheel chairs in case of fire
- Existing access hatches and blockwork to be removed and area to be made good and prepared for new wall and services for new plant and equipment in accordance with M&E Engineer's design and specification.
- New heating system installed in accordance with M&E Engineer's design and specification and enclosed in full length panelled enclosure

- New steel maintenance access door below window to roof. Door to be powder coated, colour TBC.
- Latching type fall restraint wire system
- New built up felt box gutter
- New structural steel columns in accordance with Structural Engineer's design and specification
- New wall with structural steel columns. Wall to support standing seam Zinc sheet cladding system
- New aluminium high level window
- New suspended concrete slab supported on steel frame and concrete columns in accordance with Structural Engineer's design and specification
- Louvre panel as part of window assembly
- Full height recessed cup'd to accommodate roof RWP in accordance with M&E Engineer's design and specification
- RWP from roof to connect to existing surface water drainage system in accordance with Structural Engineer's design and specification
- Western Red cedar horizontal board timber cladding system
- New toilets. Pans to be fixed against IPS system with hidden cisterns and pipework to connect to foul drainage system
- Install new butlers sink to each cleaners cup'd and connect to new SVP
- New disabled toilets. Pans and fittings to be fixed against wall system with hidden cisterns and pipework to connect to foul drainage system in accordance with Approved Doc Part M with 1000mm door clear width 900mm

For continuation, please refer to dwg: 521185-A-104

All Mechanical & Electrical and Structural information shown indicative only. Please refer to Mechanical & Electrical and Structural documentation.