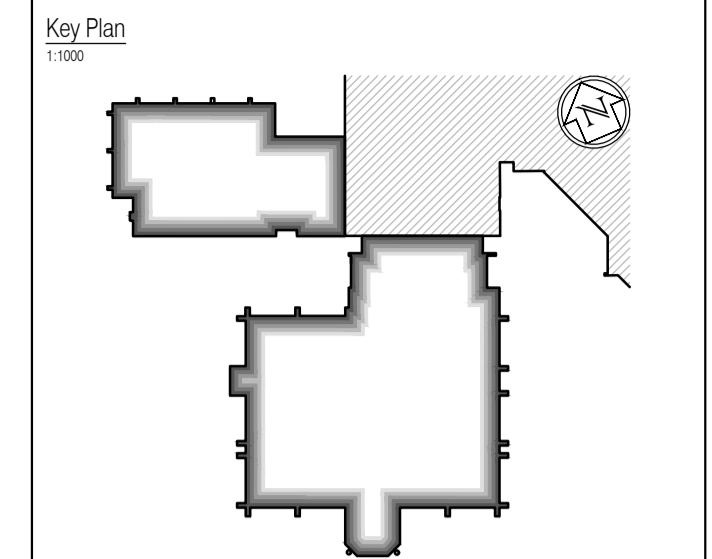


NOTES: Do not scale this drawing. All dimensions to be checked on site prior to commencement or manufacture.



Acoustic Strategy Key

|    |    |    |    |    |                             |
|----|----|----|----|----|-----------------------------|
| T1 | T1 | T1 | T1 | T1 | Acoustic level (dB Rw 40dB) |
| T2 | T2 | T2 | T2 | T2 | Acoustic level (dB Rw 48dB) |
| T3 | T3 | T3 | T3 | T3 | Acoustic level (dB Rw 55dB) |
| T4 | T4 | T4 | T4 | T4 | Acoustic level (dB Rw 80dB) |
| T5 | T5 | T5 | T5 | T5 | Acoustic level (dB Rw 30dB) |
| T6 | T6 | T6 | T6 | T6 | Acoustic level (dB Rw 35dB) |

Refer also to the following FCG drawings:  
 For 'GA Plans', refer to drawings 'A-100-Series'.  
 For 'GA Sections', refer to drawings 'A-200-Series'.  
 For 'GA Elevations', refer to drawings 'A-300-Series'.  
 For 'Fire Strategy', refer to drawings 'A-160-Series'.  
 For 'Internal Partition Strategy', refer to drawings 'A-170-Series'.  
 For 'Builder's Work', refer to drawings 'A-180-Series'.  
 Refer also to detailed drawings generally - 'A-400-Series + NBS'

## AS BUILT DRAWING

NB: - Solid gray hatch denotes existing building fabric.

| Rev | Date | By | Chk | Comment |
|-----|------|----|-----|---------|
|     |      |    |     |         |
|     |      |    |     |         |
|     |      |    |     |         |
|     |      |    |     |         |


BRINGING IDEAS TO LIFE



**FRANKHAM**

Frankham Consultancy Group Limited  
 21 Perryman Road  
 Hayward Heath RH16 3TP  
 t 01444 444900 f 01444 455642  
 enquiry@frankham.com  
 www.frankham.com

Client



**WILLMOTT DIXON  
CONSTRUCTION**

Project Title

Wealden District Council  
 Hailsham Head Quarters  
 Refurbishments and Alterations

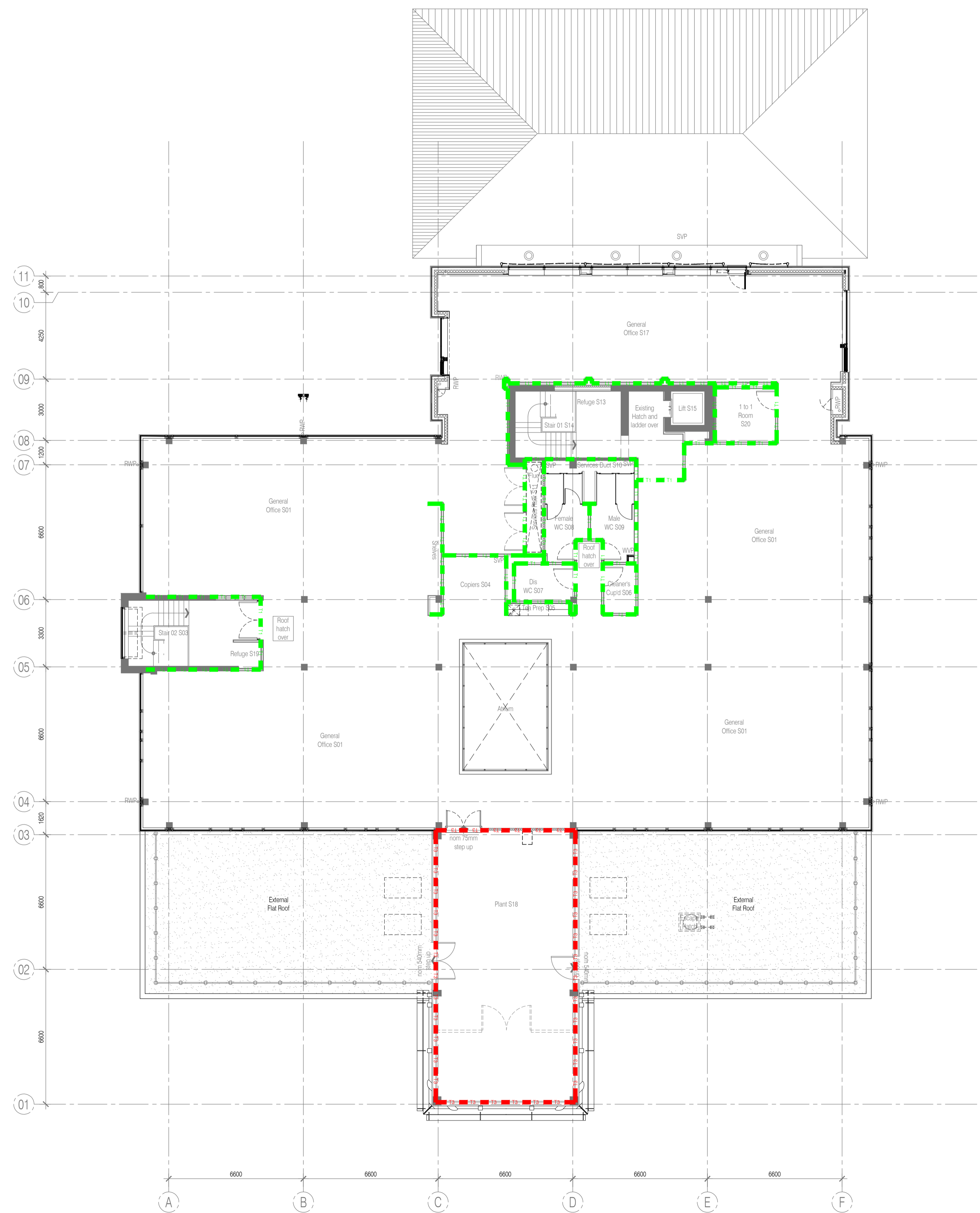
Drawing Title

Proposed Second Floor Plan  
 Council Offices Building  
 Acoustic Strategy Plan

|                     |                    |                   |
|---------------------|--------------------|-------------------|
| Drawn by:<br>RKC    | Scale:<br>1:125@A1 | Date:<br>16.12.10 |
| Designed by:<br>FCG | Checked by:<br>RKC | Approved by:      |

File Ref.: X:\FRANKHAM\021185\WEALDEN\DOORCH\02\_186\_LOCATION\_PLAN\_RUC\_GA\_021185-A-152.dwg - 20/06/11 16:07:02

|                                    |           |
|------------------------------------|-----------|
| Drawing No.<br><b>521185-A-152</b> | Rev.<br>- |
|------------------------------------|-----------|



NB: All information based on supplied third party survey information. All discrepancies to be reported to FCG immediately upon discovery.

All Mechanical & Electrical and Structural information shown indicative only. Please refer to Mechanical & Electrical and Structural documentation.