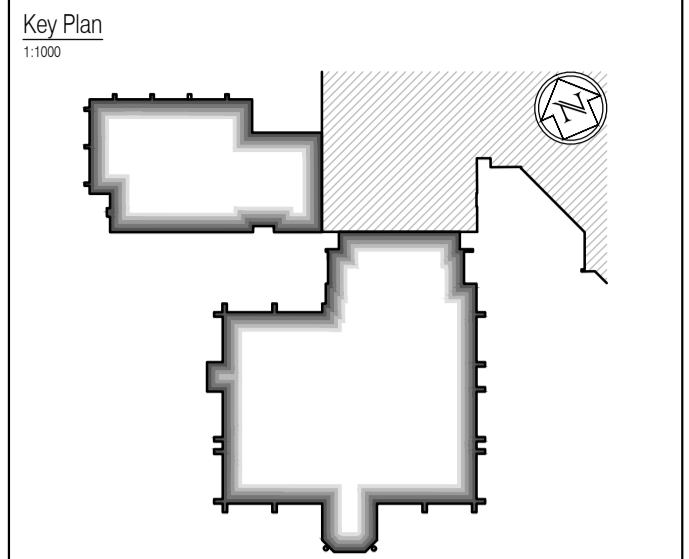


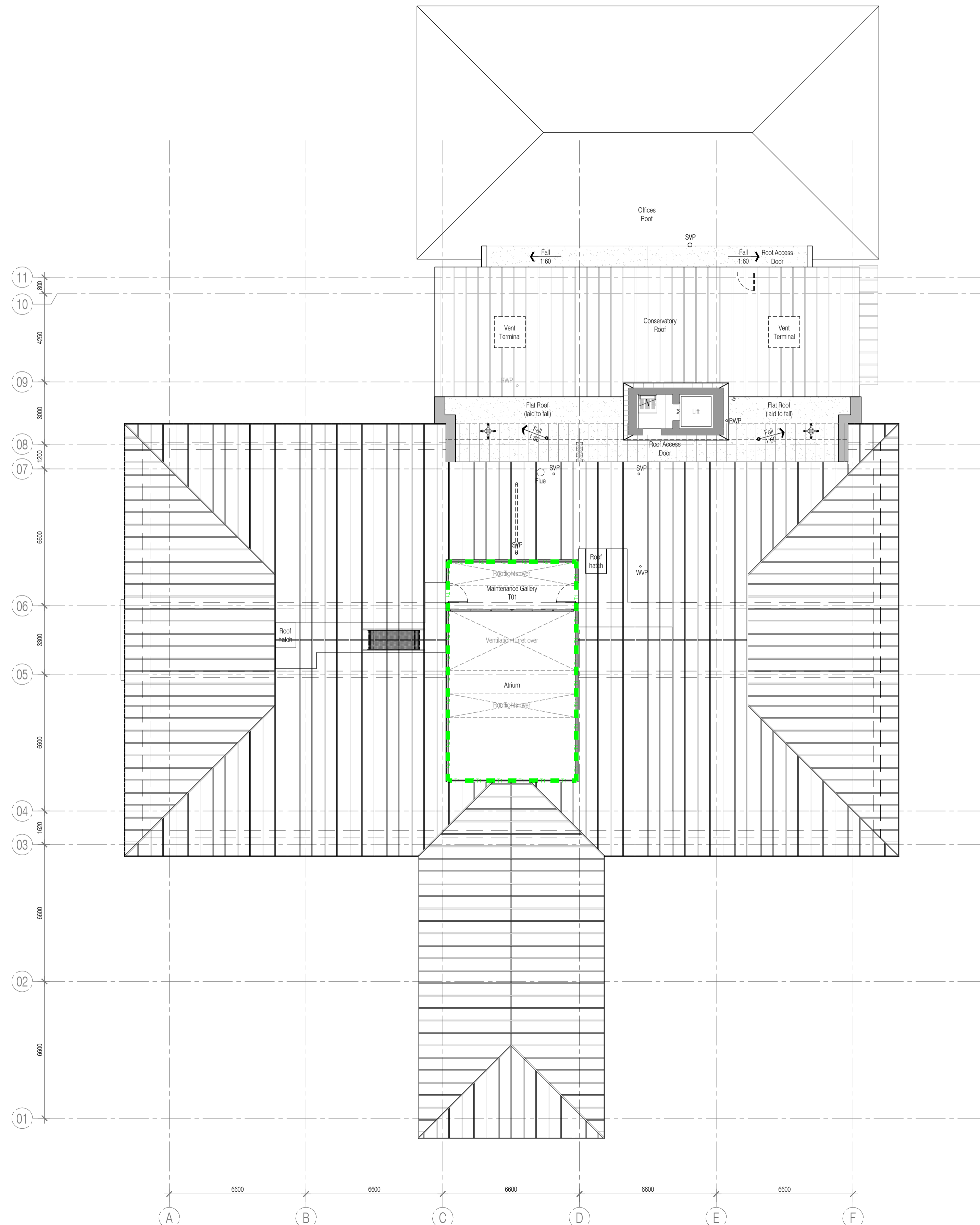
NOTES: Do not scale this drawing. All dimensions to be checked on site prior to commencement or manufacture.



Acoustic Strategy Key

T1	T1	T1	T1	T1	Acoustic level (dB Rw 40dB)
T2	T2	T2	T2	T2	Acoustic level (dB Rw 48dB)
T3	T3	T3	T3	T3	Acoustic level (dB Rw 55dB)
T4	T4	T4	T4	T4	Acoustic level (dB Rw 80dB)
T5	T5	T5	T5	T5	Acoustic level (dB Rw 30dB)
T6	T6	T6	T6	T6	Acoustic level (dB Rw 35dB)

Refer also to the following FCG drawings:
 For 'GA Plans', refer to drawings 'A-100-Series'.
 For 'GA Sections', refer to drawings 'A-200-Series'.
 For 'GA Elevations', refer to drawings 'A-300-Series'.
 For 'Fire Strategy', refer to drawings 'A-160-Series'.
 For 'Internal Partition Strategy', refer to drawings 'A-170-Series'.
 For 'Builder's Work', refer to drawings 'A-180-Series'.
 Refer also to detailed drawings generally - 'A-400-Series + NBS'



**AS BUILT
DRAWING**

NB: - Solid gray hatch denotes existing building fabric.

Rev	Date	By	Chk	Comment

BRINGING IDEAS TO LIFE

FRANKHAM

Frankham Consultancy Group Limited
 21 Perryman Road
 Heywards Heath, RH11 6 3TP
 t 01444 444900 f 01444 455642
 enquiry@frankham.com
 www.frankham.com

Client

**WILLMOTT DIXON
CONSTRUCTION**

Project Title

Wealden District Council
 Hailsham Head Quarters
 Refurbishments and Alterations

Drawing Title

Proposed Third Floor Plan
 Council Offices Building
 Acoustic Strategy Plan

Drawn by: RKC	Scale: 1:125@A1	Date: 16.12.10
Designed by: FCG	Checked by: RKC	Approved by: AC

File Ref.: X:\FRANKHAM\2006\16\WEALDEN\DOOR\05_16_LOCATION_PLAN_RKC.dwg
 20/06/11 16:07:05

Drawing No. 521185-A-153	Rev. -
------------------------------------	-----------