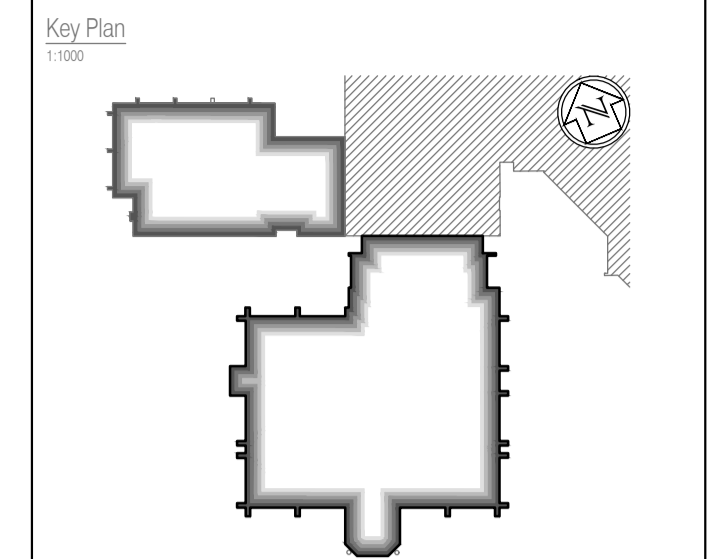
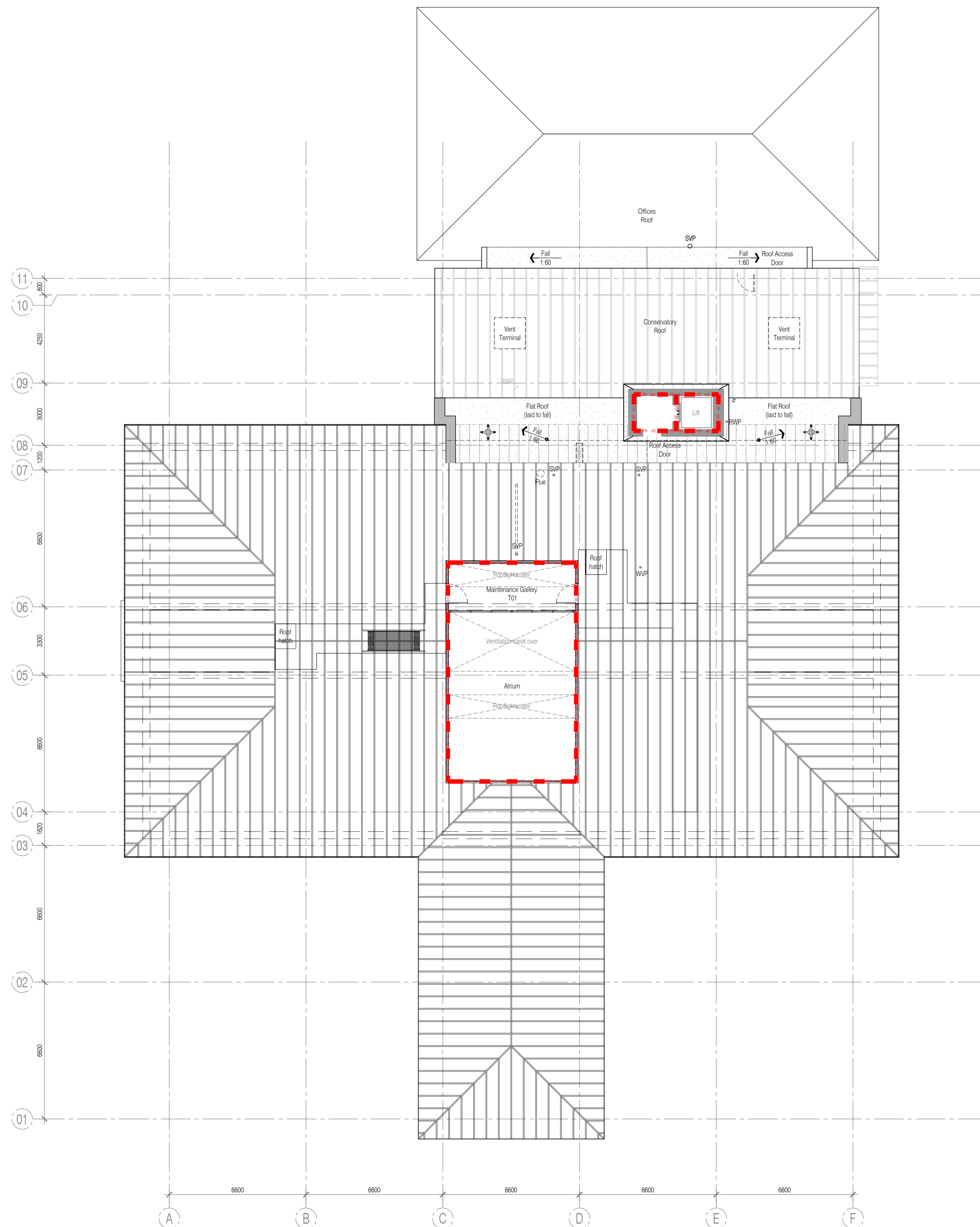


NOTES: Do not scale this drawing. All dimensions to be checked on site prior to commencement or manufacture.



Fire Strategy Key
 ■ FR 30 ■ FR 30 ■ Denotes 30 minute fire rating partition
 ■ ■ Denotes cavity barriers to extg floor voids

Refer also to the following FCG drawings:
 For GA Plans, refer to drawings A-100-Series;
 For GA Sections, refer to drawings A-200-Series;
 For GA Elevations, refer to drawings A-300-Series;
 For Acoustic Strategy, refer to drawings A-150-Series;
 For Internal Partition Strategy, refer to drawings A-170-Series;
 For Builder's Work, refer to drawings A-180-Series;
 Refer also to detailed drawings generally - A-400-Series + NBS.



**AS BUILT
DRAWING**

NB: - Solid gray hatch denotes existing building fabric.

Rev	Date	By	Chk	Comment

BRINGING IDEAS TO LIFE

FRANKHAM

Frankham Consultancy Group Limited
 21 Perryman Road
 Heywards Heath RH16 3TP
 t 01444 444900 f 01444 455642
 enquiry@frankham.com
 www.frankham.com

Client

**WILLMOTT DIXON
CONSTRUCTION**

Project Title

Wealden District Council
 Hailsham Head Quarters
 Refurbishments and Alterations

Drawing Title

Proposed Third Floor Plan
 Council Offices Building
 Fire Strategy Plan

Drawn by: RKC	Scale: 1:125@A1	Date: 16.12.10
Designed by: FCG	Checked by: RKC	Approved by: AC

File Ref.: X:\FRANKHAM\2010\16\WEALDEN\DOOR\10_16_LOCATION_PLAN_RUC.DWG
 2010-10-16 09:25 - 2010110721 20.06.11.16.07.22

Drawing No. 521185-A-163	Rev. -
------------------------------------	-----------