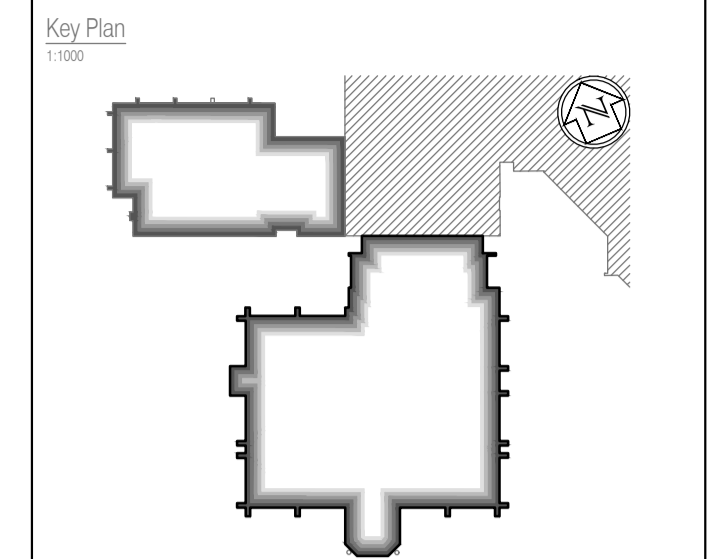


NOTES: Do not scale this drawing. All dimensions to be checked on site prior to commencement or manufacture.



Partition Strategy Key

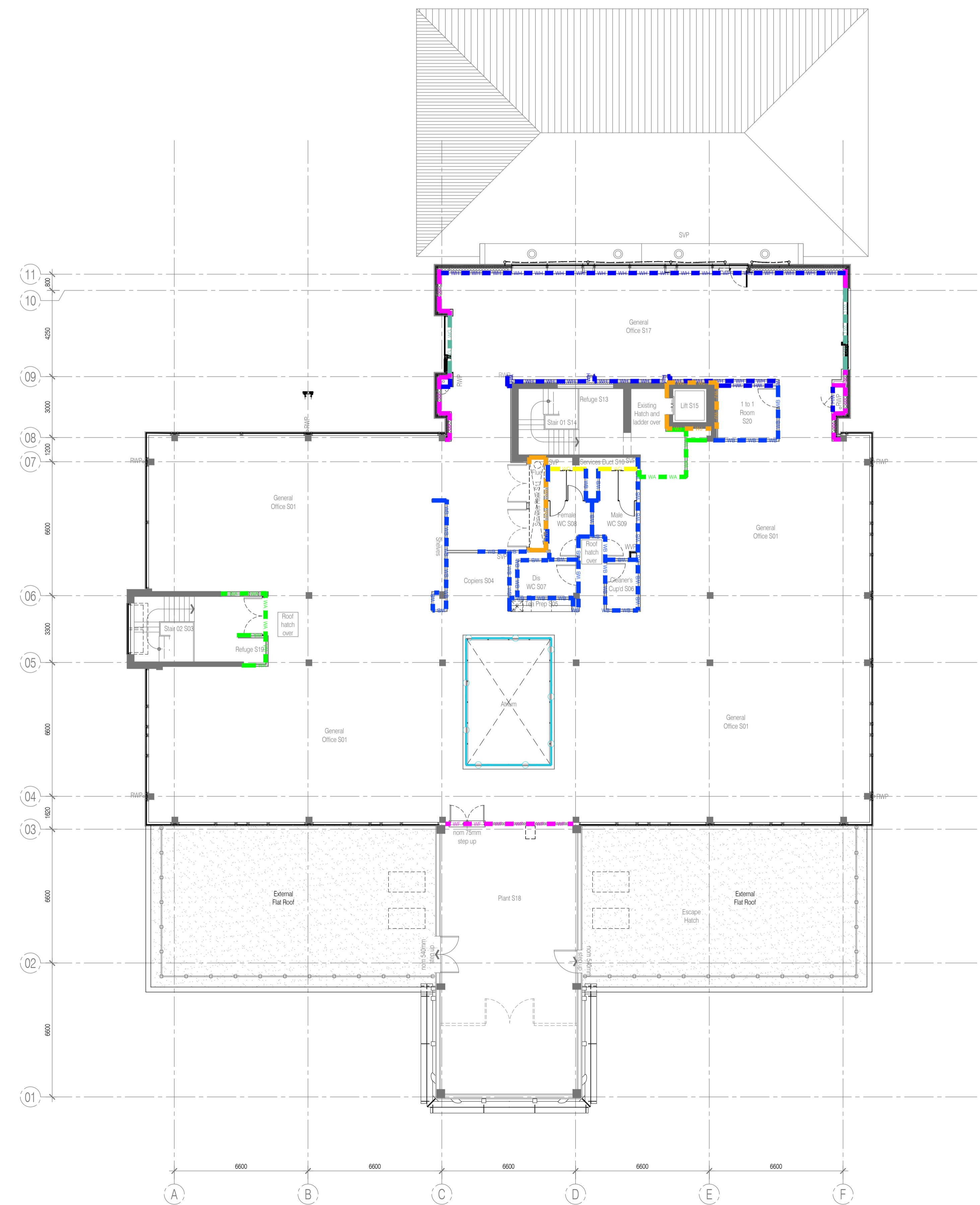
WA	WA	WA	WA	70mm C-Stud & 2 layers 15mm soundbloc - no quilt
WB	WB	WB	WB	70mm C-Stud & 2 layers 15mm soundbloc - 25mm 1200 quilt
WC	WC	WC	WC	70mm C-Stud & 2 layers 15mm soundbloc - 50mm 1200 quilt
WD	WD	WD	WD	IPS Partitions to WCs
WE	WE	WE	WE	Masonry substrates - generally to have 13mm wet plaster finish
WG	WG	WG	WG	New glazed elements
WH	WH	WH	WH	TWL 92/90 Un-insulated
WI	WI	WI	WI	2 layers 15mm soundbloc on Gyproc Gypframe MF10 metal channels secured on adhesive dabs with 6mm pargol coat to existing masonry wall
WJ	WJ	WJ	WJ	Glazed balustrade system with vertical posts carrying stainless steel handrail
WK	WK	WK	WK	Column encasements

Note
 All existing external walls dry-lined using thermal board.
 All existing fair-faced internal blockwork partition walls to be dry-lined.

Refer also to the following FCG drawings:
 For 'GA Plans', refer to drawings 'A-100-Series'.
 For 'GA Sections', refer to drawings 'A-200-Series'.
 For 'GA Elevations', refer to drawings 'A-300-Series'.
 For 'Acoustic Strategy', refer to drawings 'A-150-Series'.
 For 'Internal Fire Strategy', refer to drawings 'A-160-Series'.
 For 'Builders Work', refer to drawings 'A-180-Series'.
 Refer also to detailed drawings generally - 'A-400-Series + NBS'.

AS BUILT DRAWING

NB: - Solid gray hatch denotes existing building fabric.



NB: All information based on supplied third party survey information. All discrepancies to be reported to FCG immediately upon discovery.

BRINGING IDEAS TO LIFE	<p>FRANKHAM</p> <p>Frankham Consultancy Group Limited 21 Perrymount Road Hayward Heath RH16 3TP t 01444 444900 f 01444 455642 enquiry@frankham.com www.frankham.com</p>								
<p>WILLMOTT DIXON CONSTRUCTION</p>									
<p>Client Wealden District Council Hailsham Head Quarters Refurbishments and Alterations</p>									
<p>Drawing Title Proposed Second Floor Plan Council Offices Building Partition Strategy Plan</p>									
Drawn by: RKC	Scale: 1:125@A1	Date: 18.2.11							
Designed by: FCG	Checked by: JAS	Approved by: AC							
<p>File Ref.: X:\FRANKHAM\021185\HEADQUARTERS\02\ARCH\02_186_LOCATION_PLAN_RUC.DWG 2010-04-12 09:55 - 2011-01-12 10:52</p>									
<p>Drawing No. 521185-A-172</p>									<p>Rev. -</p>