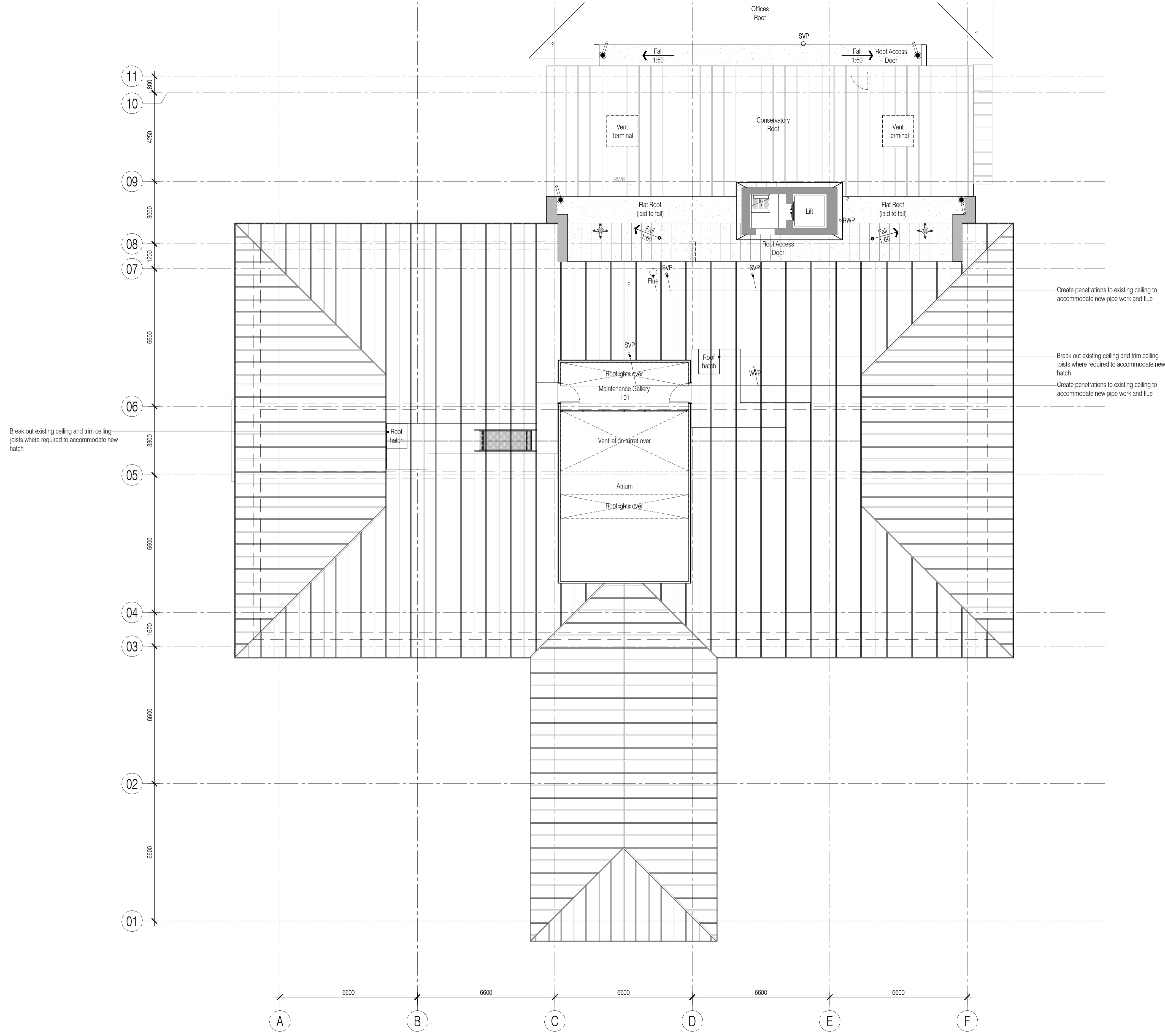
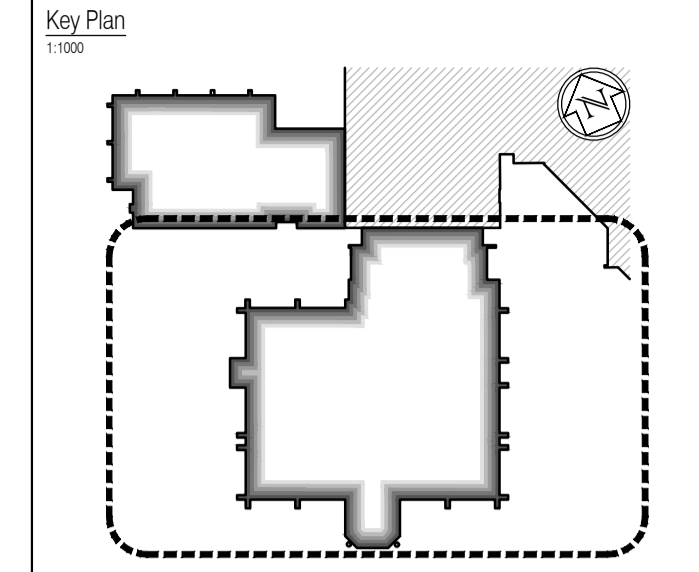


For continuation, please refer to dwg: 521185-A-187

These drawings have been edited in accordance with Willmott Dixon's instructions. All material, product, volume, dimension and performance information is indicative only, FCG repudiate any and all liability for failure or non performance of any of the above mentioned items as indicated on this or any other FCG documentation.



NOTES: Do not scale this drawing. All dimensions to be checked on site prior to commencement or manufacture.



- General Builders Works Notes**
1. All square ductwork ventilation holes to be sized and set-out in strict accordance with the Structural Engineers drawings - those shown on this drawing relate to those holes over-head.
  2. All holes set-out on this drawing for drainage are dimensioned to the centre of the holes - all hole diameters to be as confirmed by the Mechanical Engineers drawings, and to the satisfaction of the Structural Engineer.
  3. Dashed lines indicate pipe-routes tracking from hole / outlet positions at floor above. For final 'exact' routing requirements, refer to Mechanical and Electrical Engineers design drawings.
  4. All concrete / steelwork shown indicative sizes / locations only, and to be confirmed by Structural Engineer.
  5. All structural information generally to be in accordance with Structural Engineers design, details and specification.
  6. Plant layouts shown here are taken directly from the Mechanical and Electrical Engineers, or Specialist Sub-contractors design drawings; and are therefore included for reference only.
  7. All mechanical, electrical, plumbing and ventilation information to be in accordance with Mechanical and Electrical Engineers design, details and specification.
  8. For references to soil + vent pipes / rain water pipes / stub-stacks / gullies / drainage channels / etc; refer to the Mechanical and Electrical Engineers design drawings.
  9. All screed butting existing masonry walls which have been removed, to be made good and level to match existing.

- Denotes MDF raised access floor
- Denotes Metal raised access floor

**ISSUED FOR CONSTRUCTION**

NB: - Solid gray hatch denotes existing building fabric.

Rev	Date	By	Chk	Comment
A	16.09.11	RKC	JAS	Status change - Issued for CONSTRUCTION

**BRINGING IDEAS TO LIFE**

**FRANKHAM**

Frankham Consultancy Group Limited  
 21 Perryman Road  
 Haywards Heath RH16 3TP  
 t 01444 444900 f 01444 455642  
 enquiry@frankham.com  
 www.frankham.com

Client

**WILLMOTT DIXON CONSTRUCTION**

Project Title

Wealden District Council  
 Hailsham Head Quarters  
 Refurbishments and Alterations

Drawing Title

Proposed Third Plan  
 Council Offices Building  
 Builder's Works Plan

Drawn by: RKC	Scale: 1:100@A1	Date: 22.11.10
Designed by: FCG	Checked by: JAS	Approved by: AC

File Ref.: X:\FRANKHAM\2006\16\WEALDEN\2006\16\_160\00001\160\_00001.dwg 20.06.11 16:08:38

Drawing No. 521185-A-186	Rev. A
-----------------------------	-----------

NB: All information based on supplied third party survey information. All discrepancies to be reported to FCG immediately upon discovery.