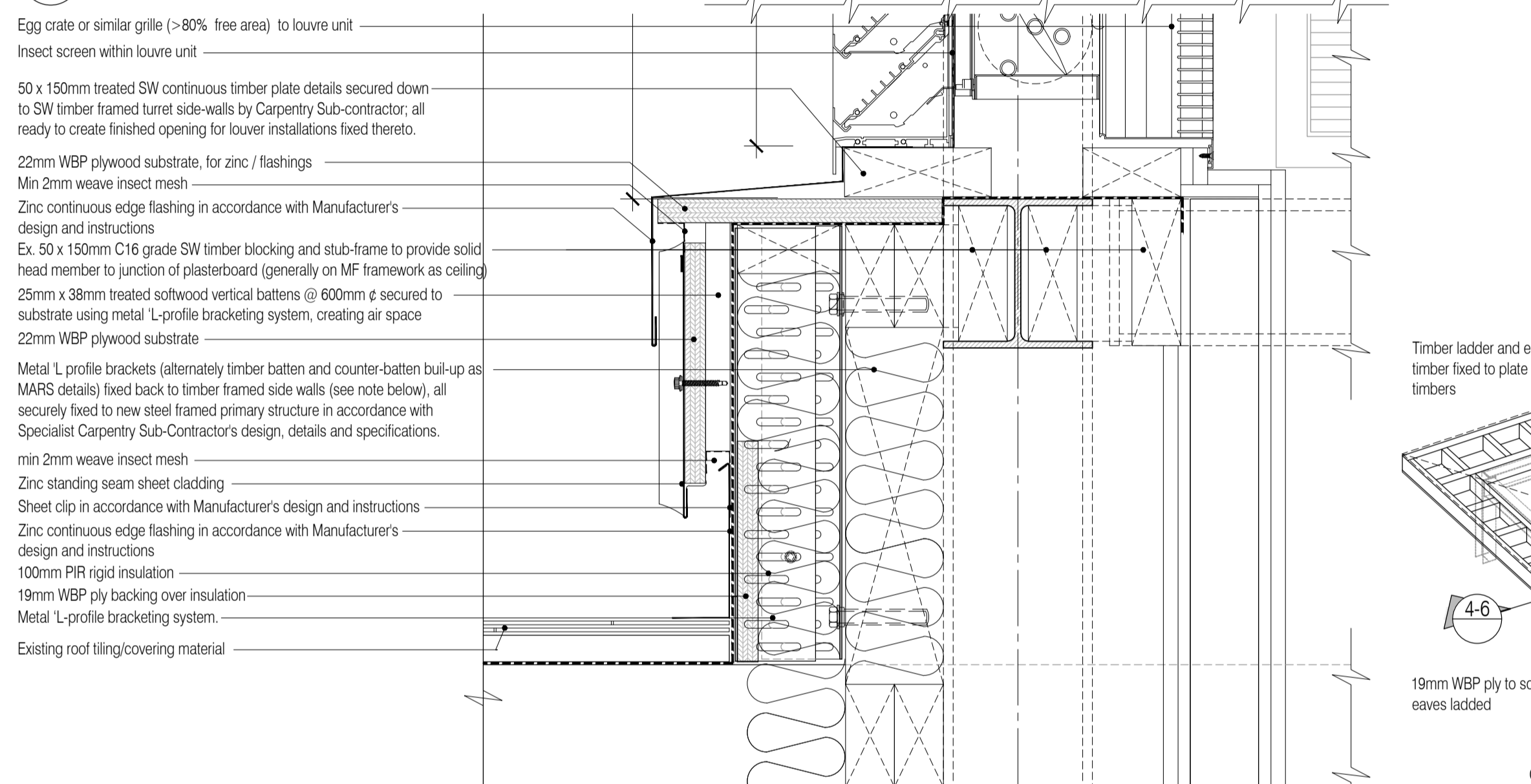
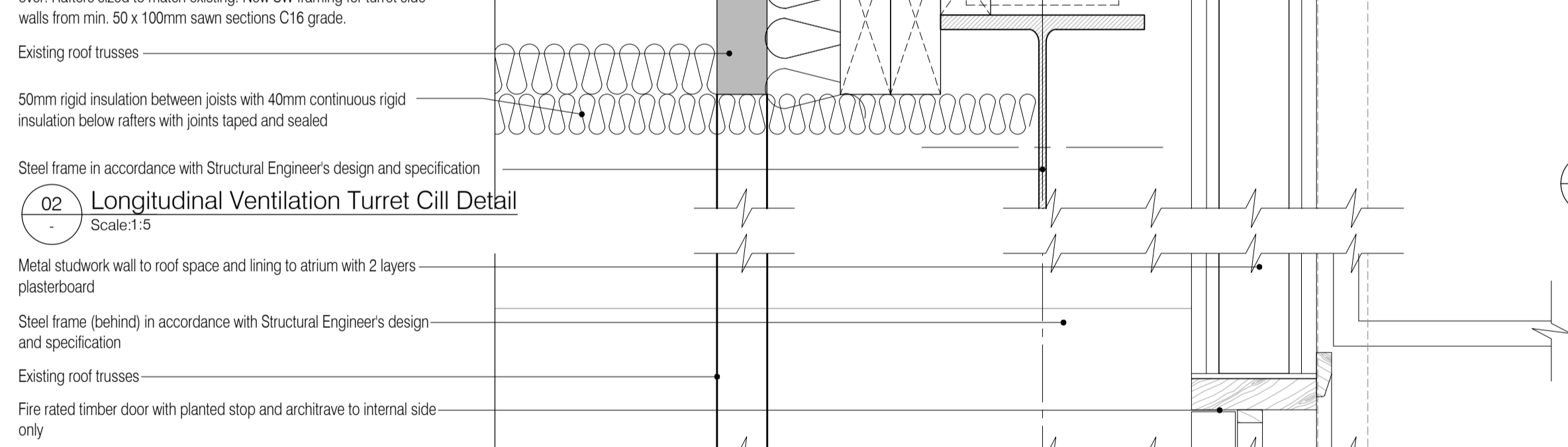


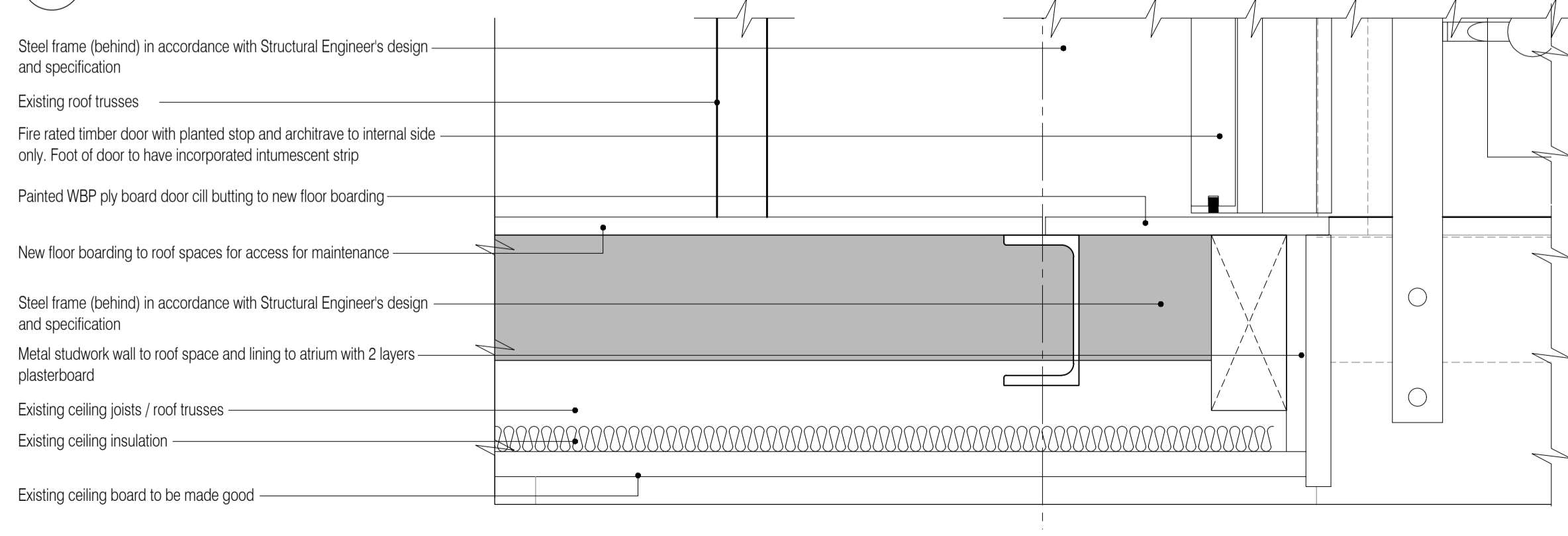
01 Longitudinal Ventilation Turret Eaves Detail
Scale: 1:5



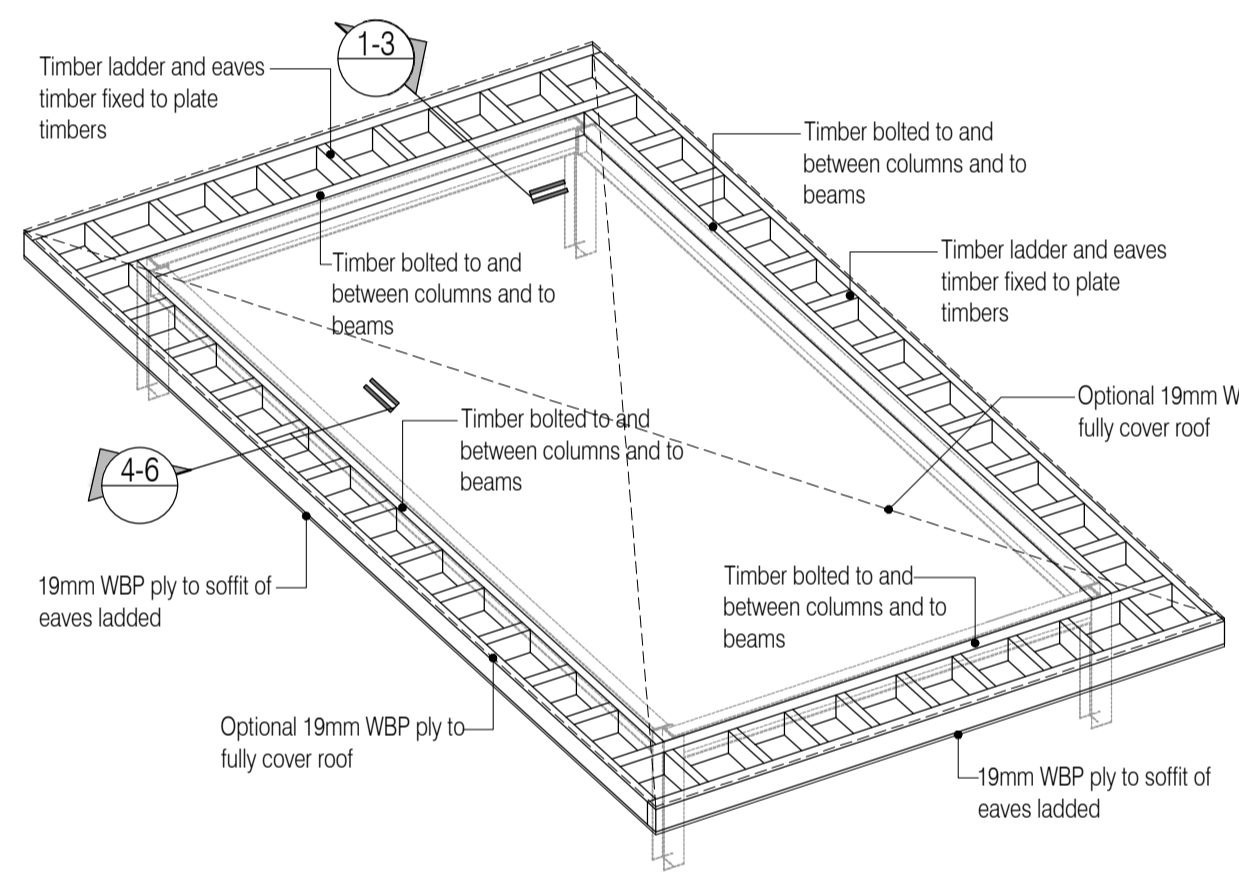
02 Longitudinal Ventilation Turret Cill Detail
Scale: 1:5



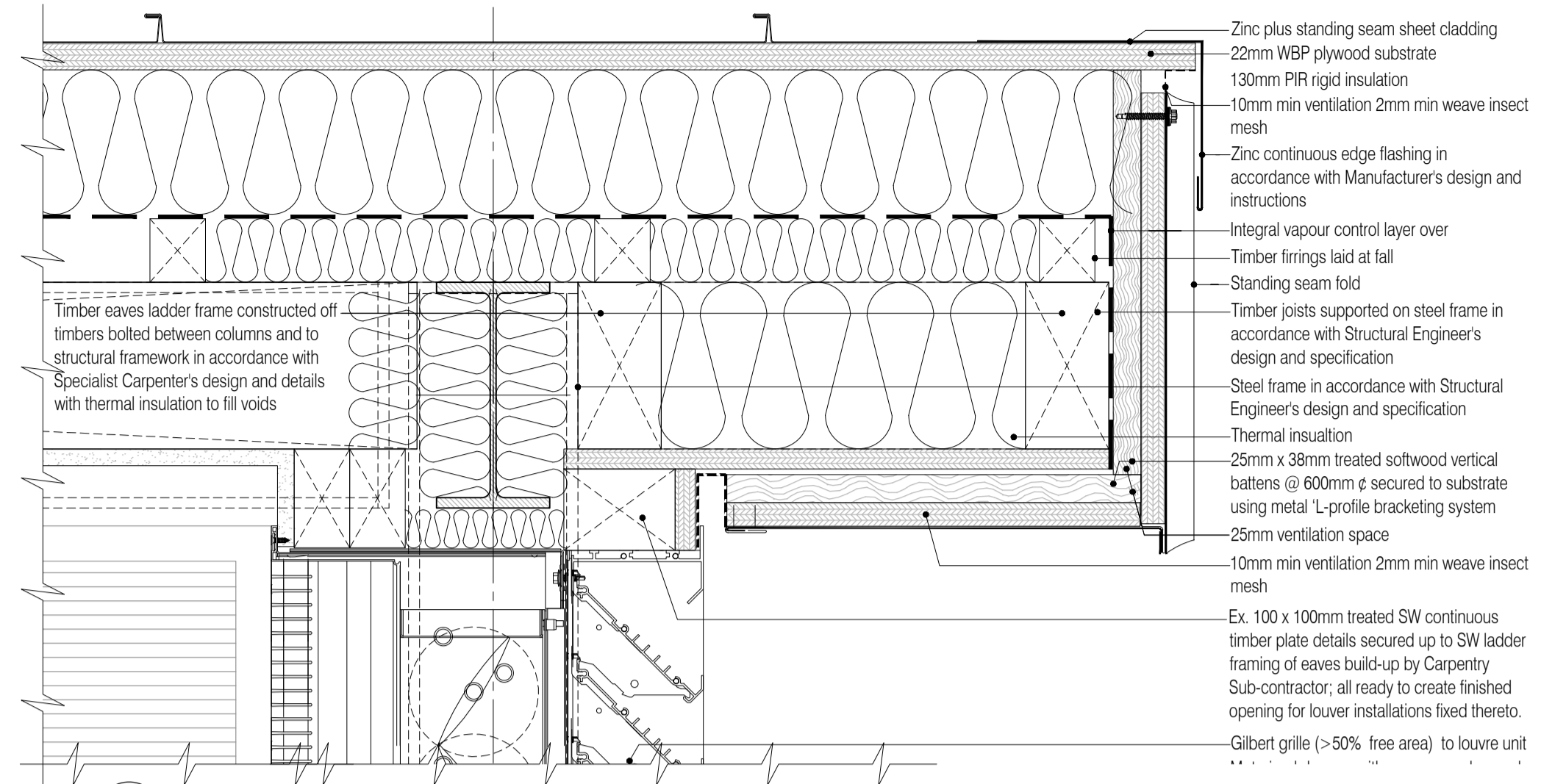
07 Roof Space Maintenance Door head Detail
Scale: 1:5



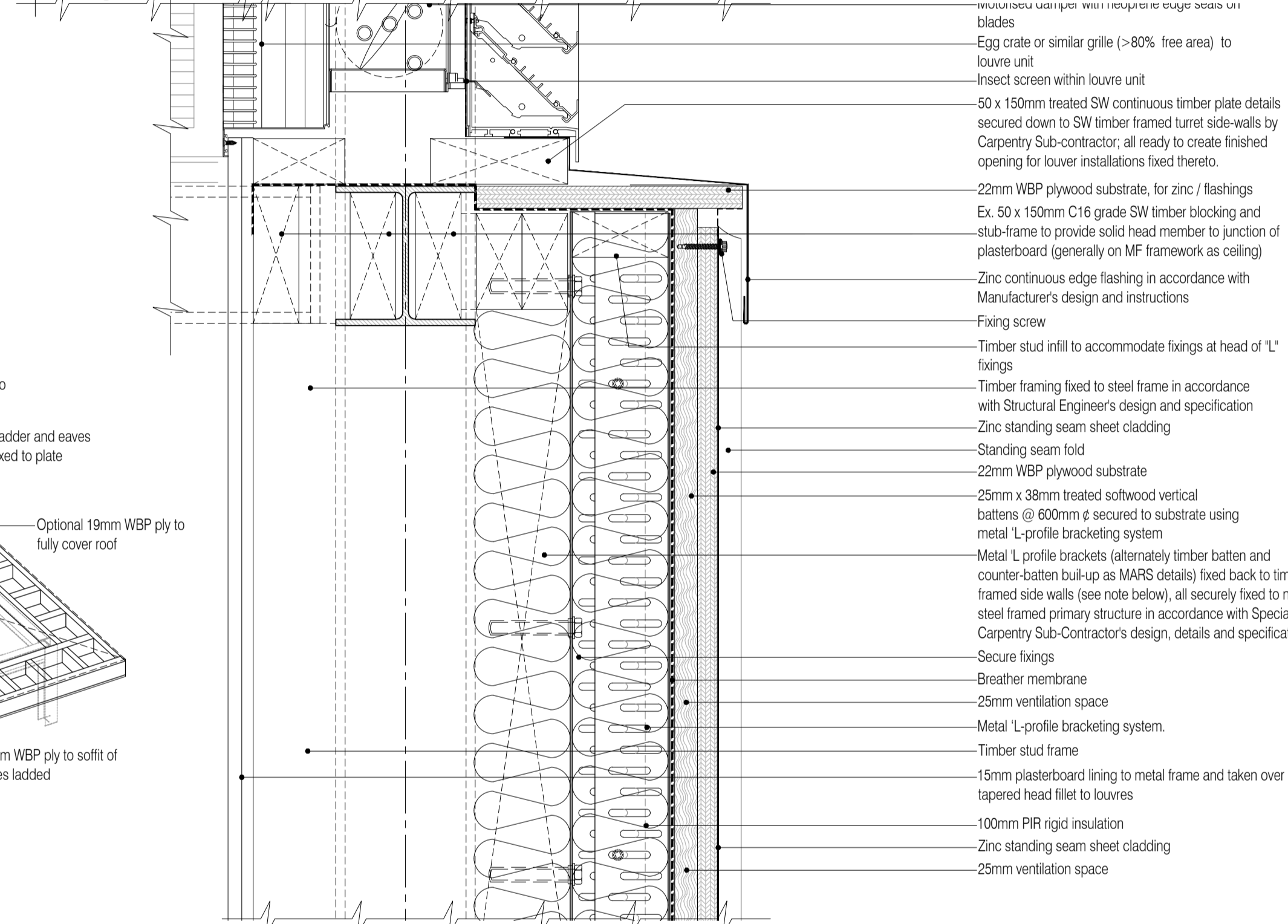
03 Longitudinal Roof Ventilation Turret Support Detail
Scale: 1:5



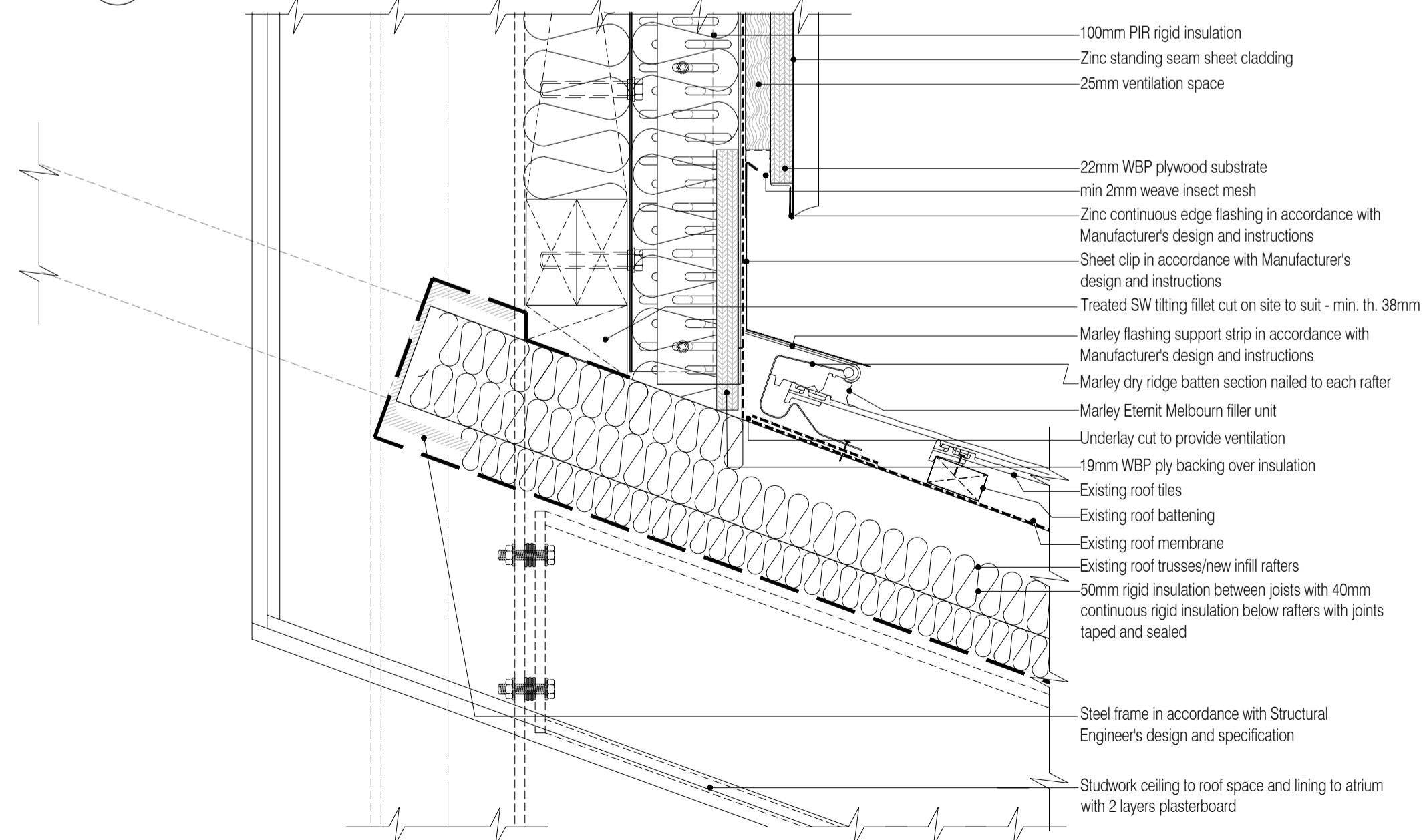
07 Turret Ladder 3D Detail
Scale: NTS



04 Latitudinal Ventilation Turret Eaves Detail
Scale: 1:5

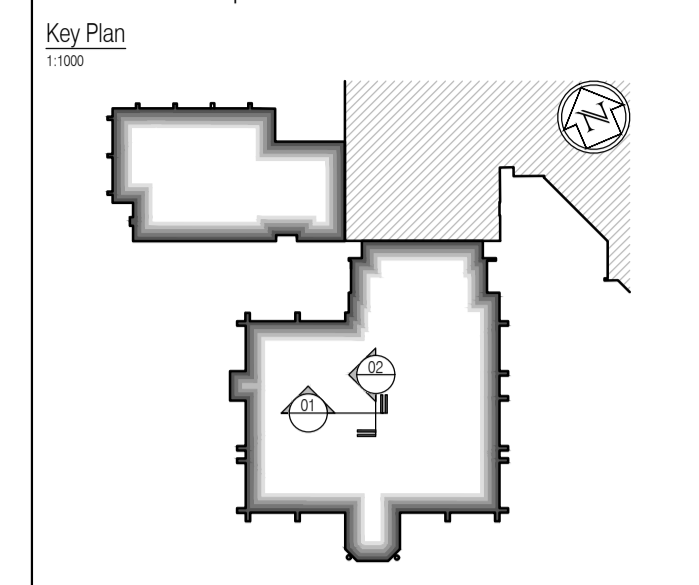


05 Latitudinal Ventilation Turret Cill Detail
Scale: 1:5



06 Latitudinal Roof Ventilation Turret Support Detail
Scale: 1:5

NOTES: Do not scale this drawing. All dimensions to be checked on site prior to commencement or manufacture.



Key Plan
1:1000

Rev: - Solid gray hatch denotes existing building fabric.

ISSUED FOR CONSTRUCTION

Rev	Date	By	Chk	Comment
A	04.11.11	JAS	AC	Carpentry arrangements rev'd to suit louvers
04	14.07.11	RKC	JAS	Major update
03	15.06.11	RKC	JAS	Major Update
02	13.10.11	RKC	JAS	Explanatory 3D and notes added.
01	06.10.11	RKC	JAS	Issued for APPROVAL

BRINGING IDEAS TO LIFE

FRANKHAM

Frankham Consultancy Group Limited
21 Perrymount Road
Haywards Heath RH16 3TP
t 01444 444000 f 01444 425642
enquiries@frankham.com
www.frankham.com

Client: WILLMOTT DIXON CONSTRUCTION

Project Title: Wealden District Council Hailsham Head Quarters Refurbishments and Alterations

Drawing Title: Roof Ventilation Lantern And Cladding Details

Drawn by: RKC Scale: 1:5@A1 Date: 16.02.11

Designed by: FCG Checked by: JAS Approved by: AC

File Ref.: X:\FRANKHAM\020216\HAILSHAM HEAD QUARTERS\40 DETAIL\05MECH.DWG 2010-04-22 09:57:33 2006110914 20.06.11 16:19:18

Drawing No: 521185-A-402 Rev: A

NB: All information based on supplied third party survey information. All discrepancies to be reported to FCG immediately upon discovery.

All Mechanical & Electrical and Structural information shown indicative only. Please refer to Mechanical & Electrical and Structural documentation.