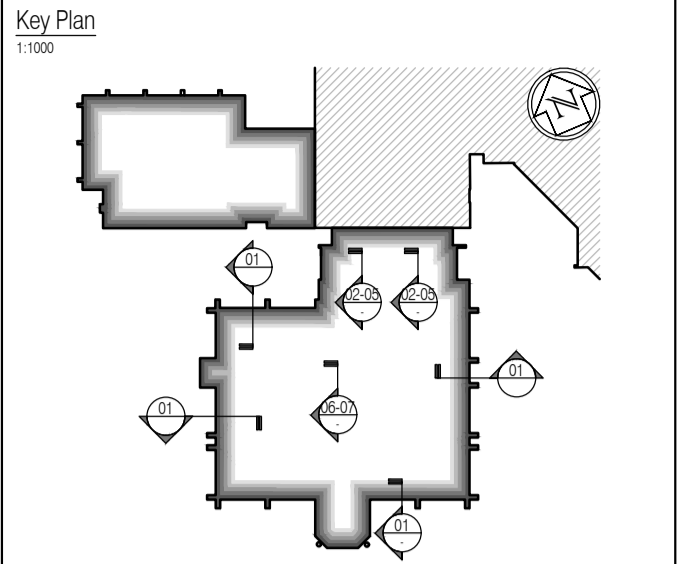
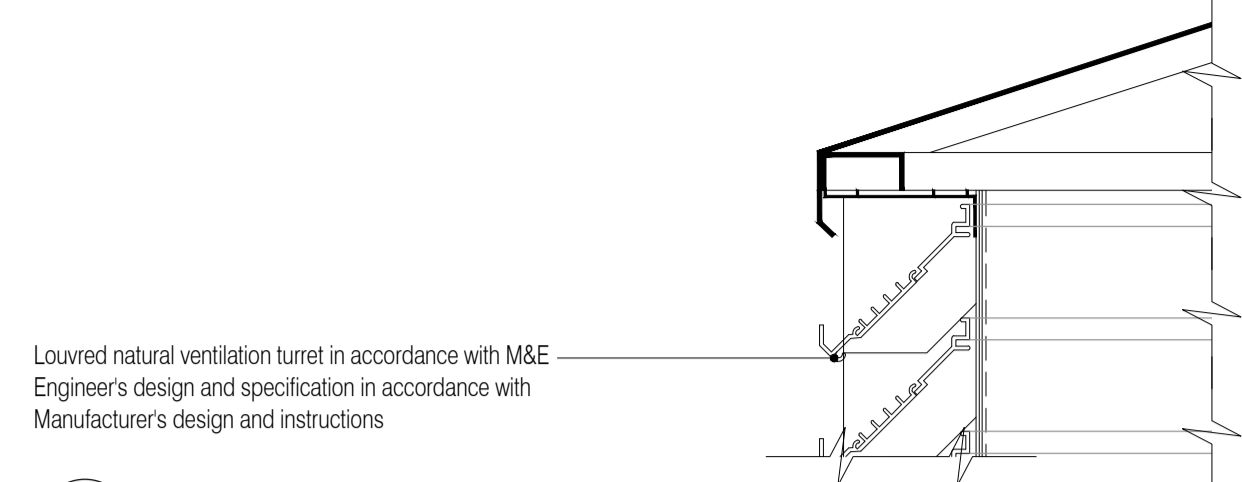


These drawings have been edited in accordance with Willmott Dixon's instructions. All material, product, volume, dimension and performance information is indicative only. FCG repudiates any and all liability for failure or non-performance of any of the above mentioned items as indicated on this or any other FCG documentation.

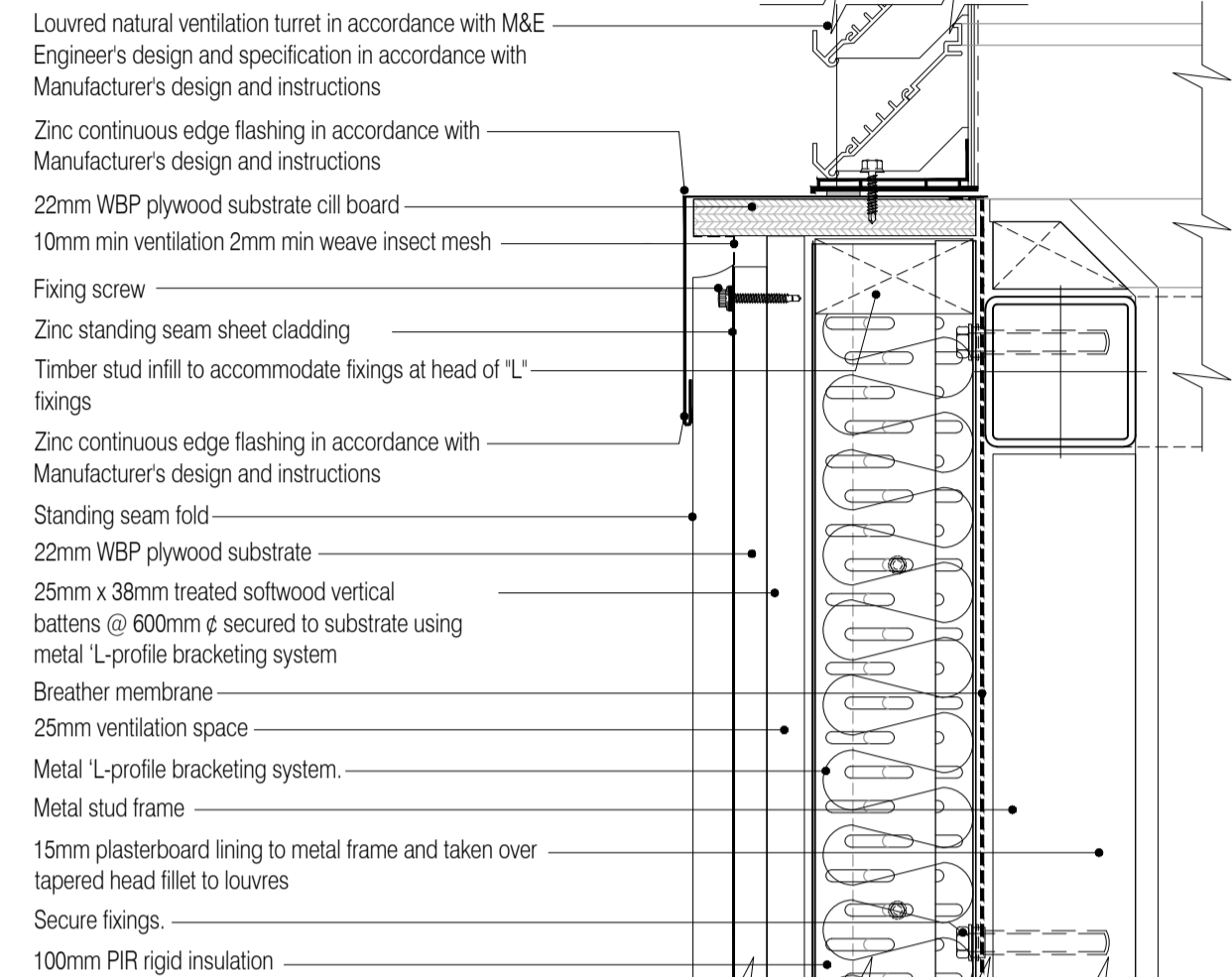
NOTES: Do not scale this drawing. All dimensions to be checked on site prior to commencement or manufacture.



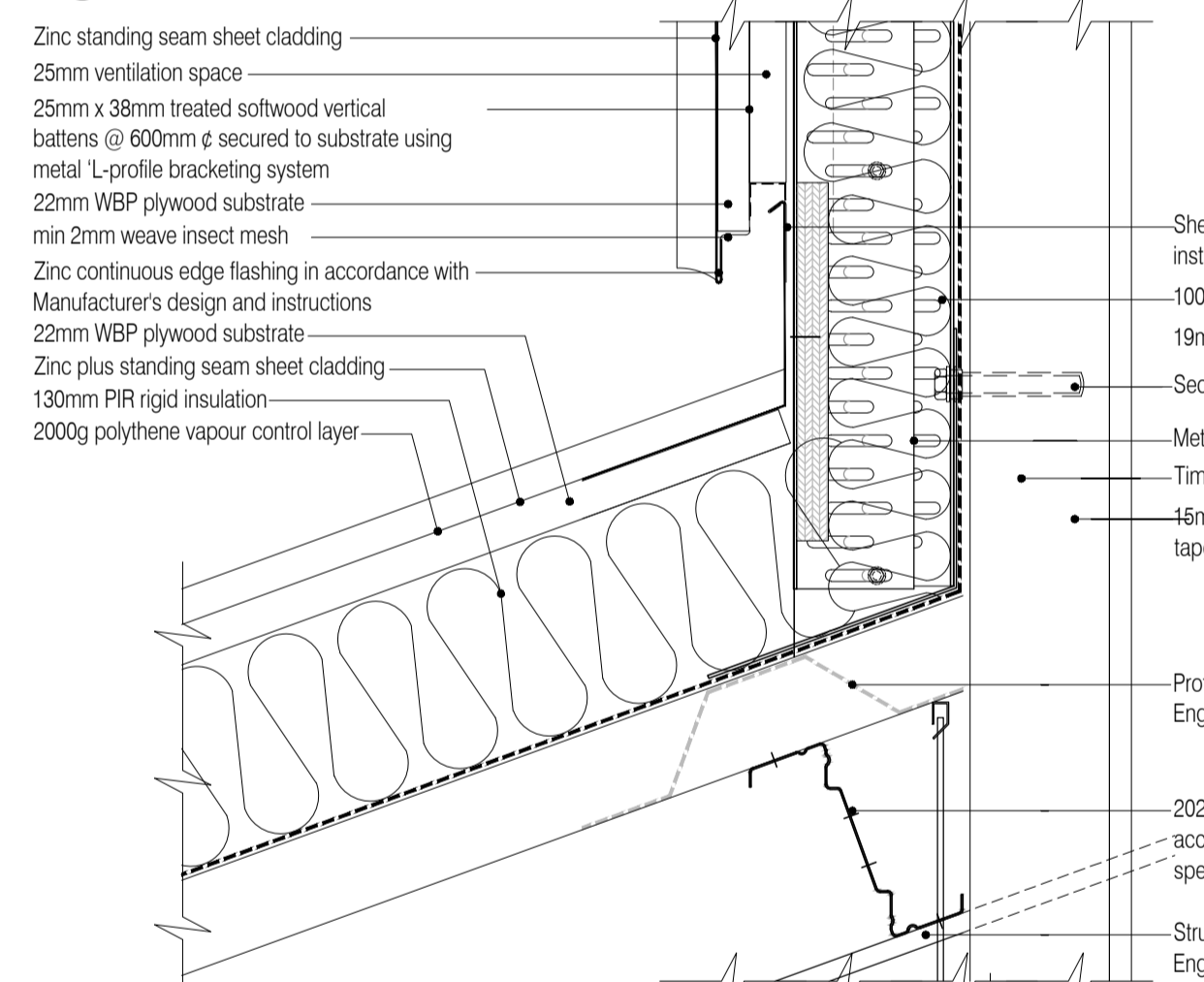
All window details to be in accordance with and finalised by Velfac prior to manufacture and all drawings to be checked on site prior to installation. Architect to be informed on discovery of any discrepancy and work to cease on particular area until resolved with Manufacturer.



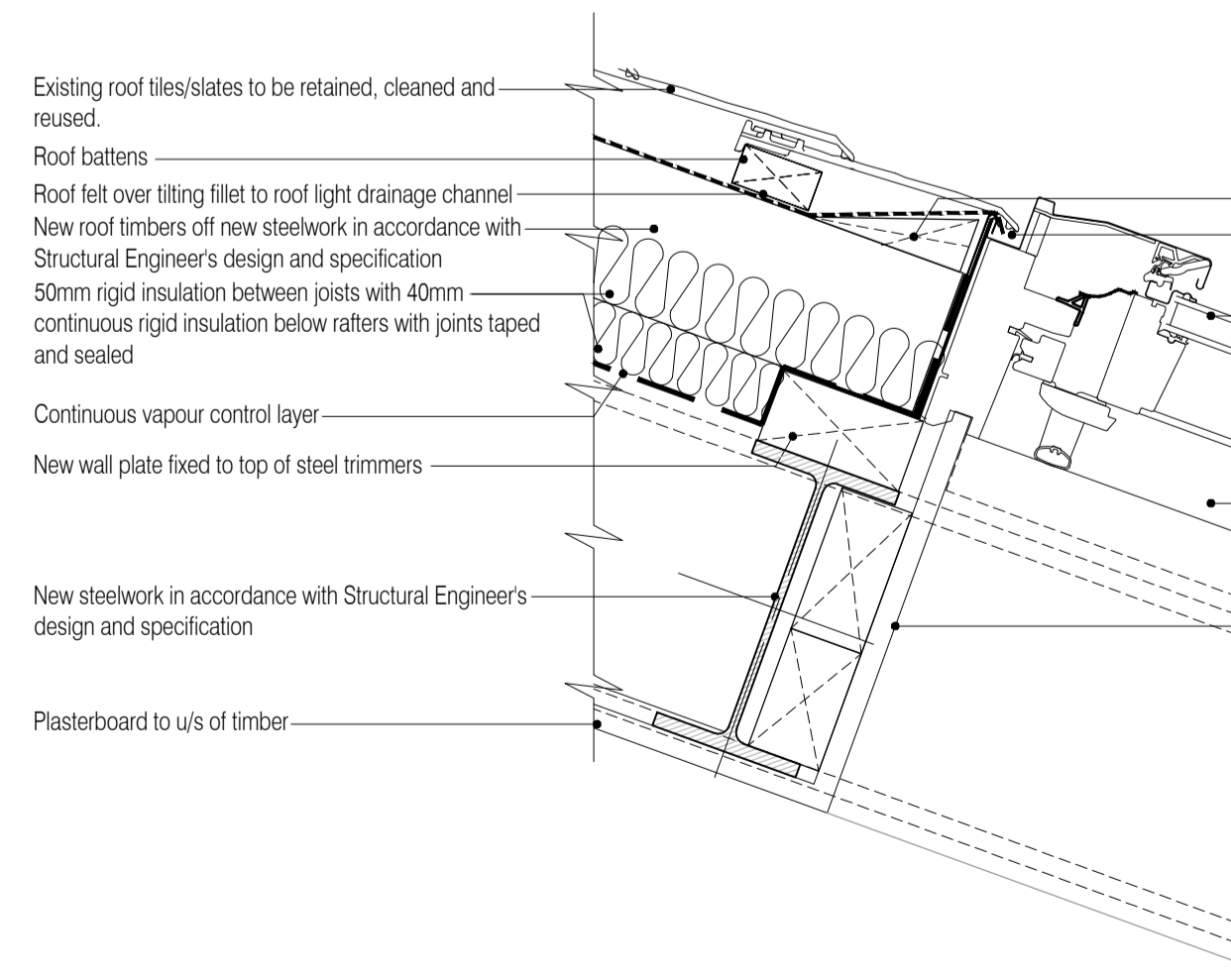
02 Louvre Roof Interface Detail
Scale:1:5



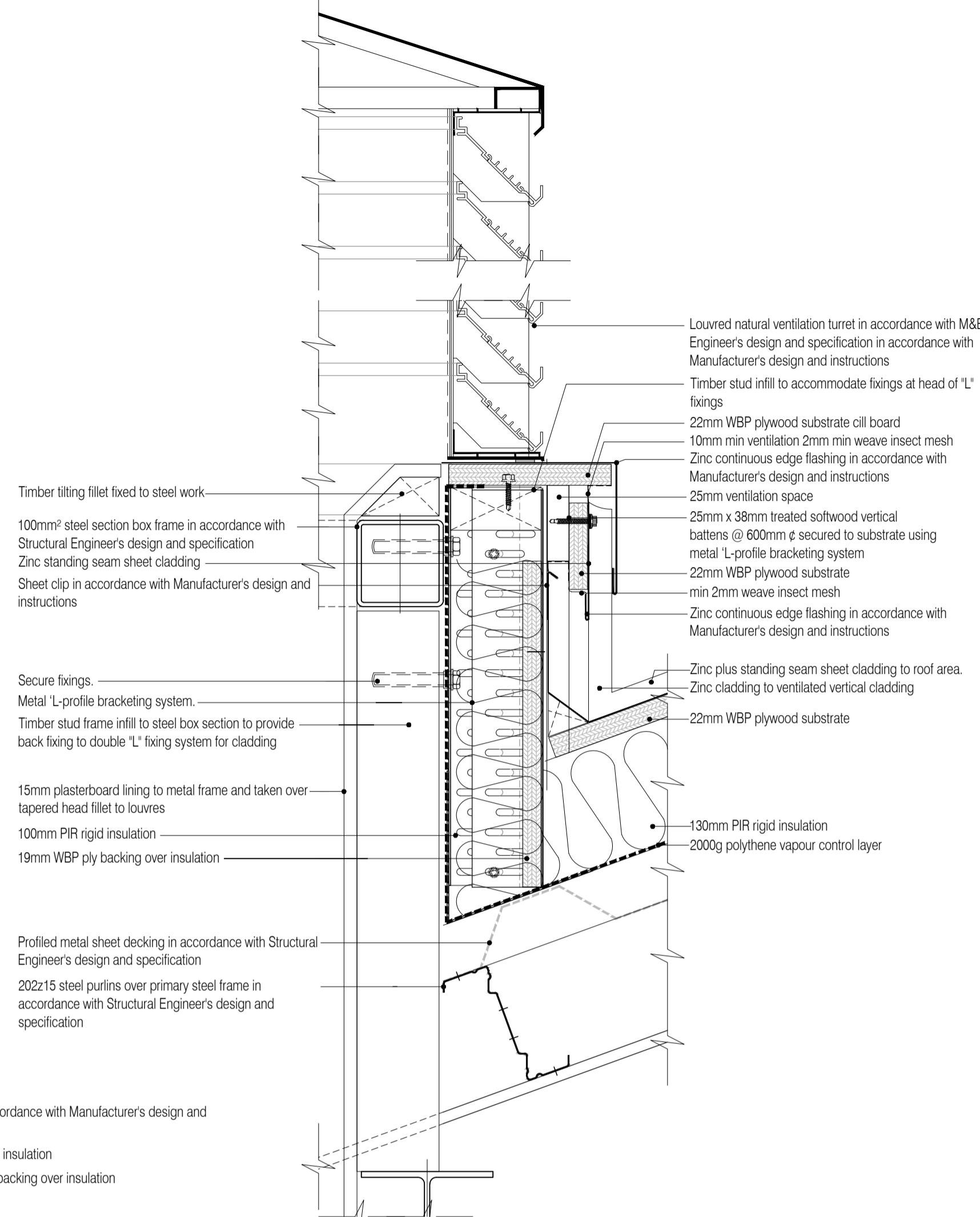
03 Zinc Upstand / Louvre Interface Detail
Scale:1:5



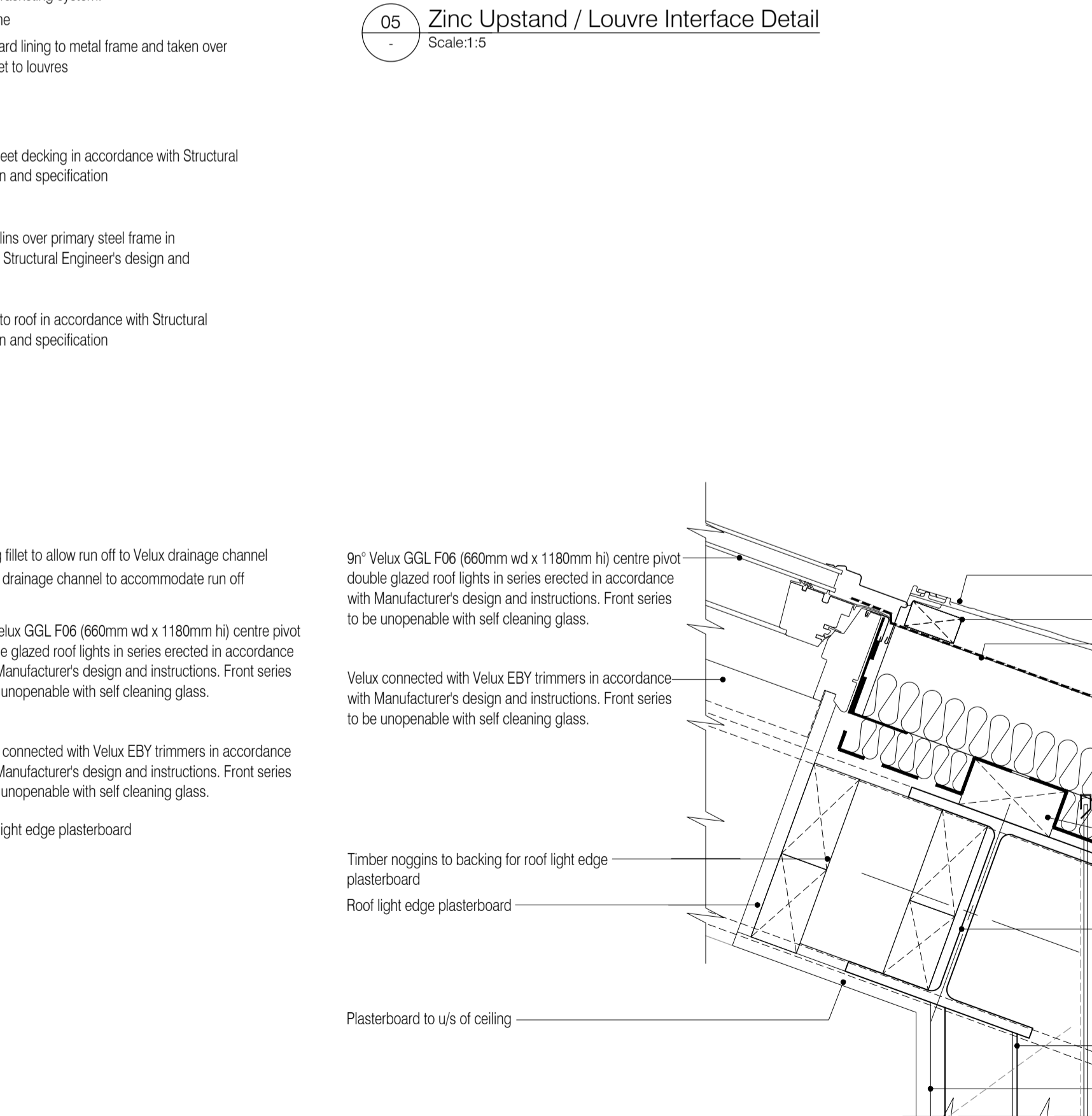
04 Louvre Upstand / Pitched Zinc Roof Interface Detail
Scale:1:5



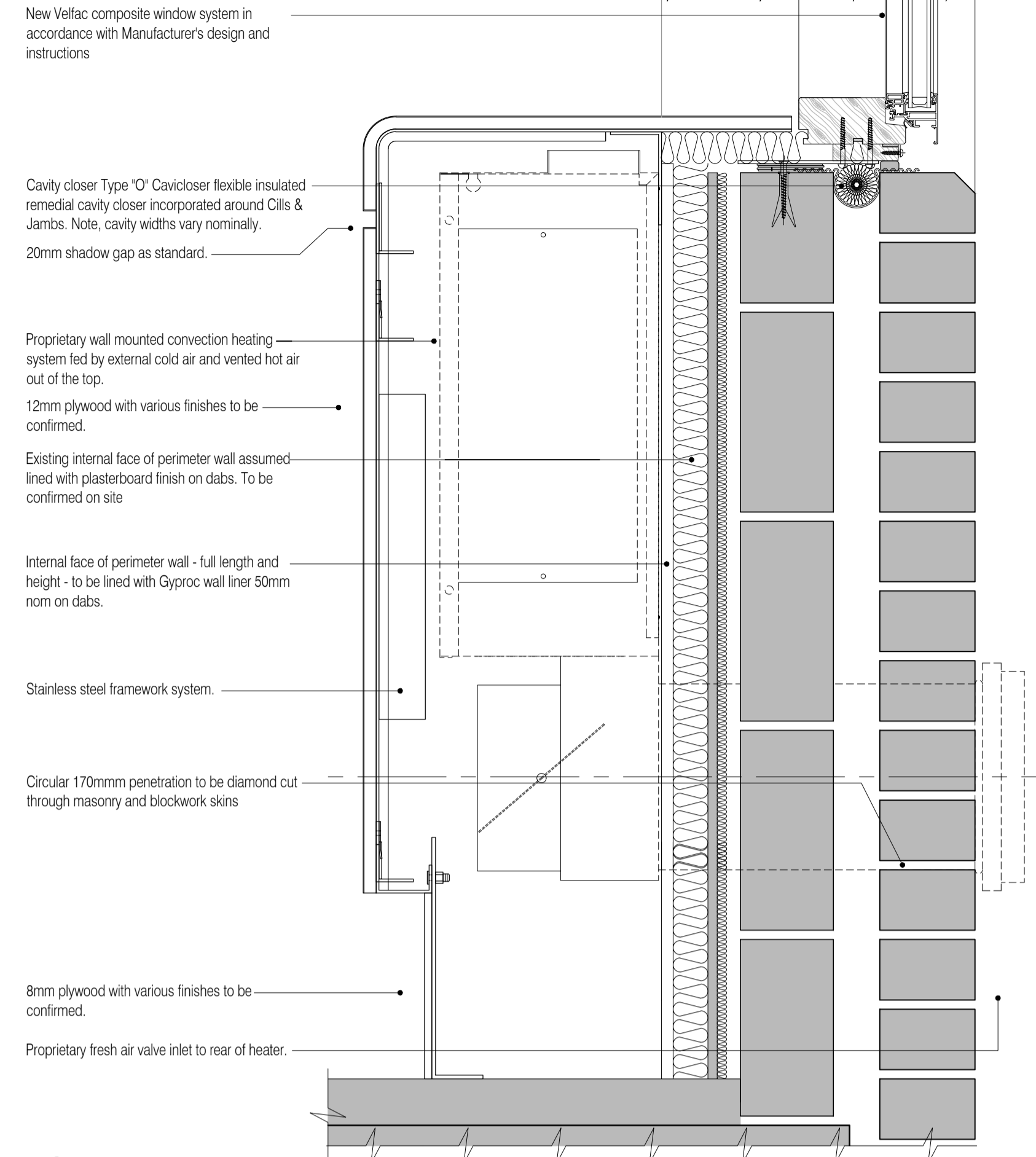
06 Roof Light Head Detail
Scale:1:5



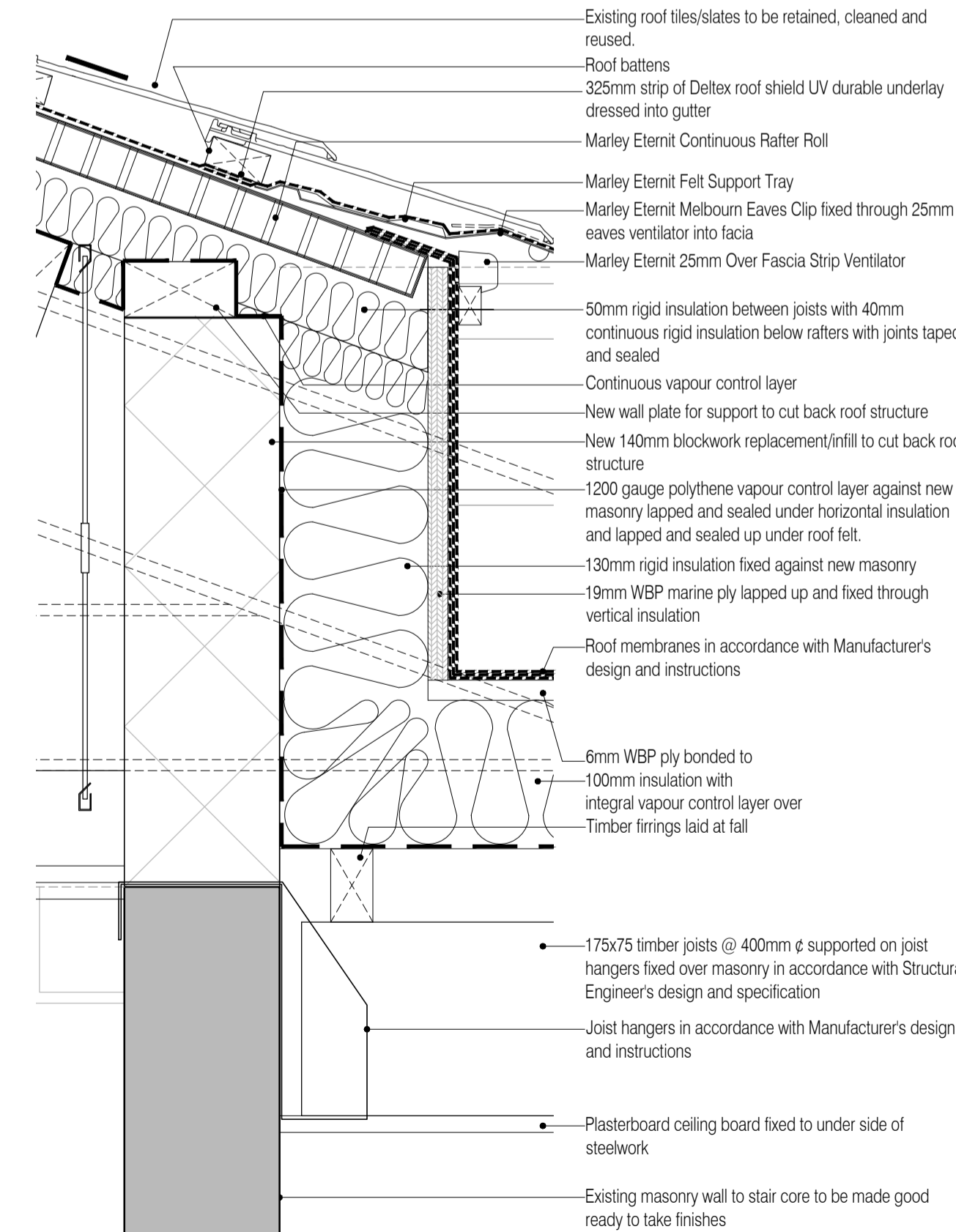
05 Zinc Upstand / Louvre Interface Detail
Scale:1:5



07 Roof Light Cill Detail
Scale:1:5



01 Perimeter Heater Enclosure Detail
Scale:1:5



08 Main Roof Cut Back / Flat Gutter Interface Detail
Scale:1:5

ISSUED FOR CONSTRUCTION

NB: - Solid gray hatch denotes existing building fabric.

Rev	Date	By	Chk	Comment
A	16.09.11	RKC	JAS	Status change - Issued for CONSTRUCTION



FRANKHAM

Frankham Consultancy Group Limited
21 Perrymount Road
Haywards Heath RH16 3TP
t 01444 444900 f 01444 455642
enquiry@frankham.com
www.frankham.com



Client
Wealden District Council
Hailsham Head Quarters
Refurbishments and Alterations

Drawing Title
Office External Perimeter Wall Heater Enclosure
& Link Ventilation Turret
Details

Drawn by: RKC	Scale: 1:5@A1	Date: 25.02.11
Designed by: FCG	Checked by: JAS	Approved by: AC

File Ref.: 1/FRANKHAM/CB02/18/WEALDEN/DC/ARCH/45460 DETAIL SCHEMATIC/07180-A-403 DWG - 23/01/11/0954 20/06/11/16/20/01

Drawing No.
521185-A-403

Rev.
A

NB: All information based on supplied third party survey information. All discrepancies to be reported to FCG immediately upon discovery.

All Mechanical & Electrical and Structural information shown indicative only. Please refer to Mechanical & Electrical and Structural documentation.