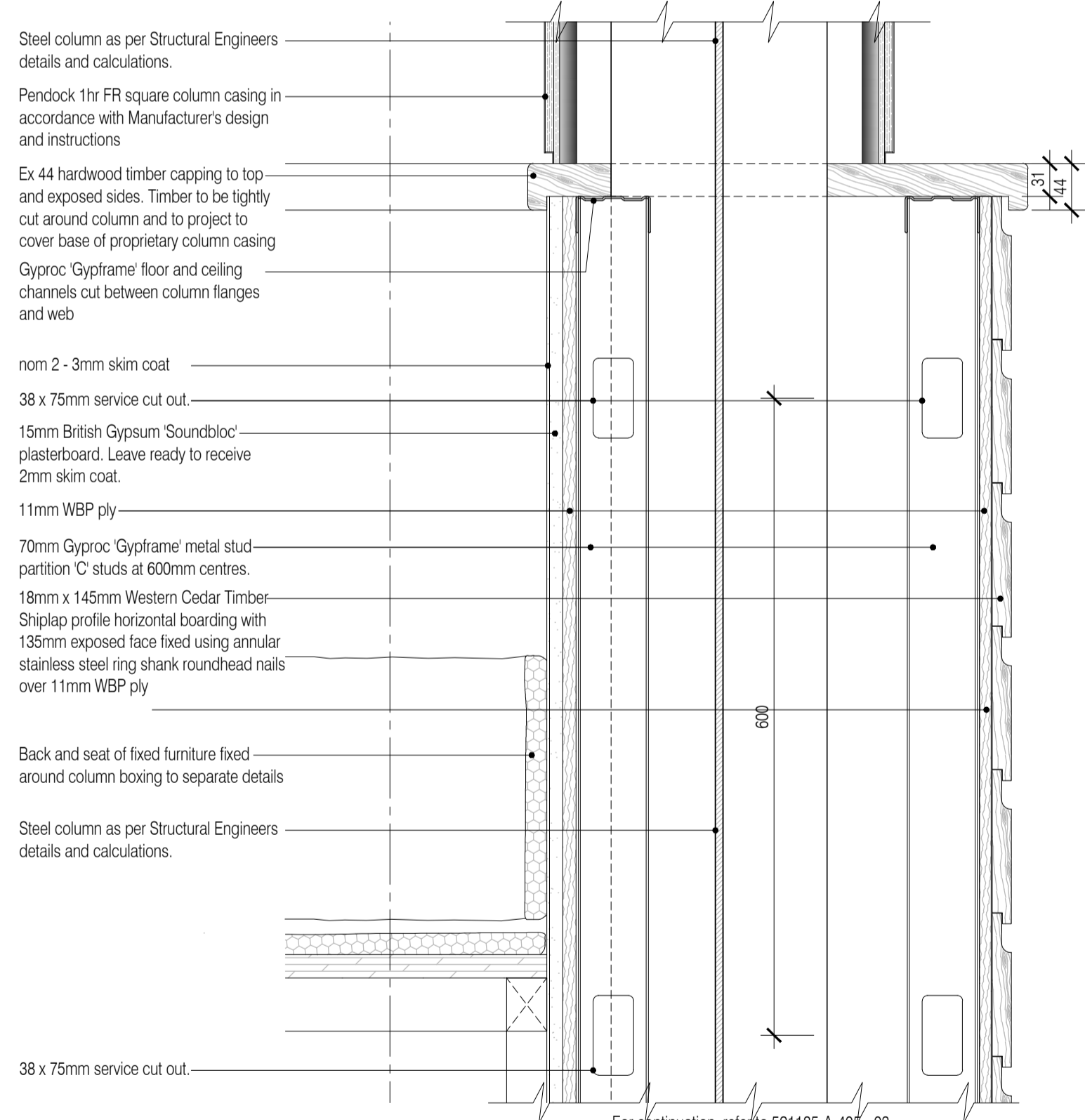
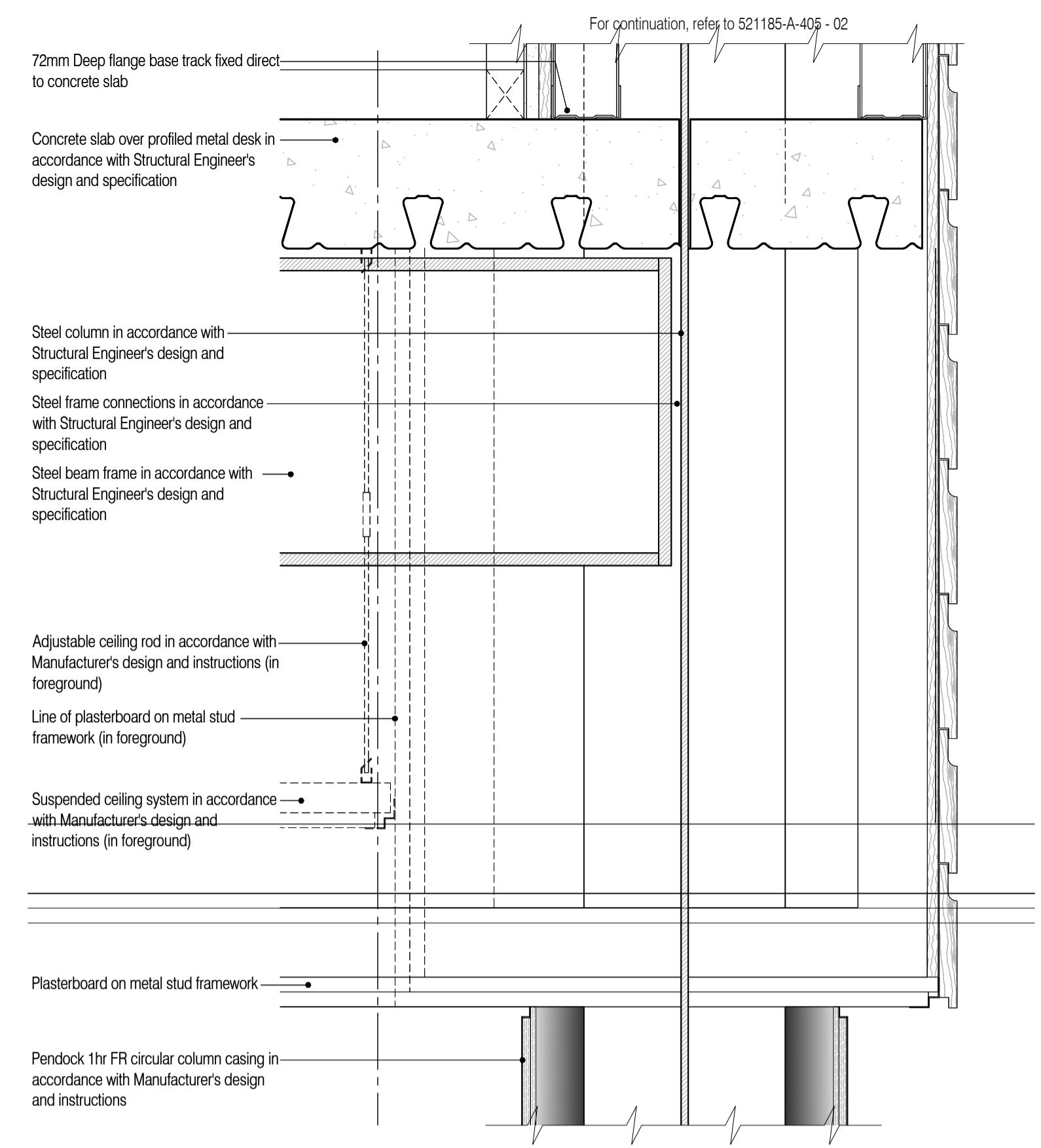


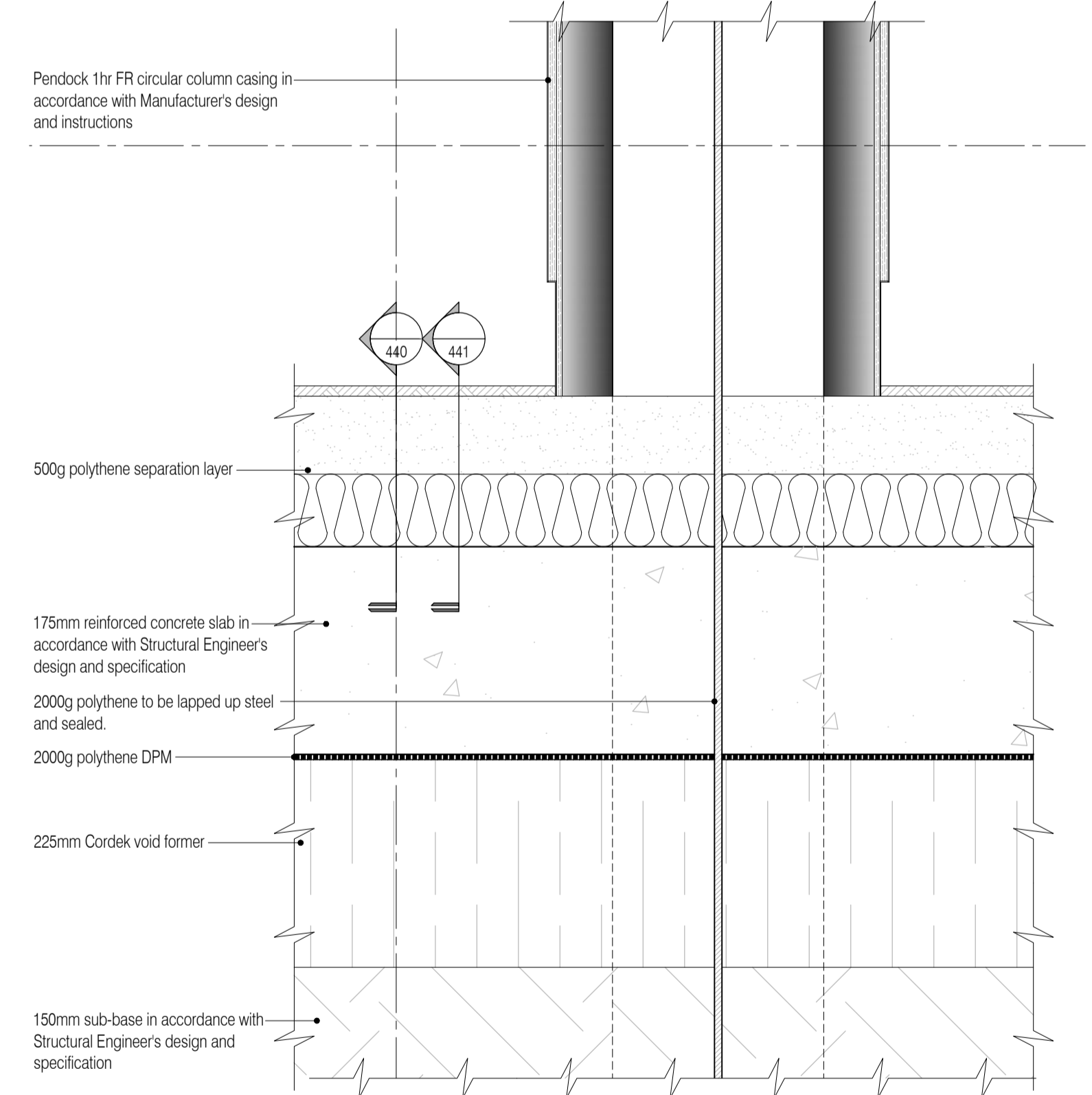
01 Under Second Floor Bulkhead Detail
Scale: 1:5



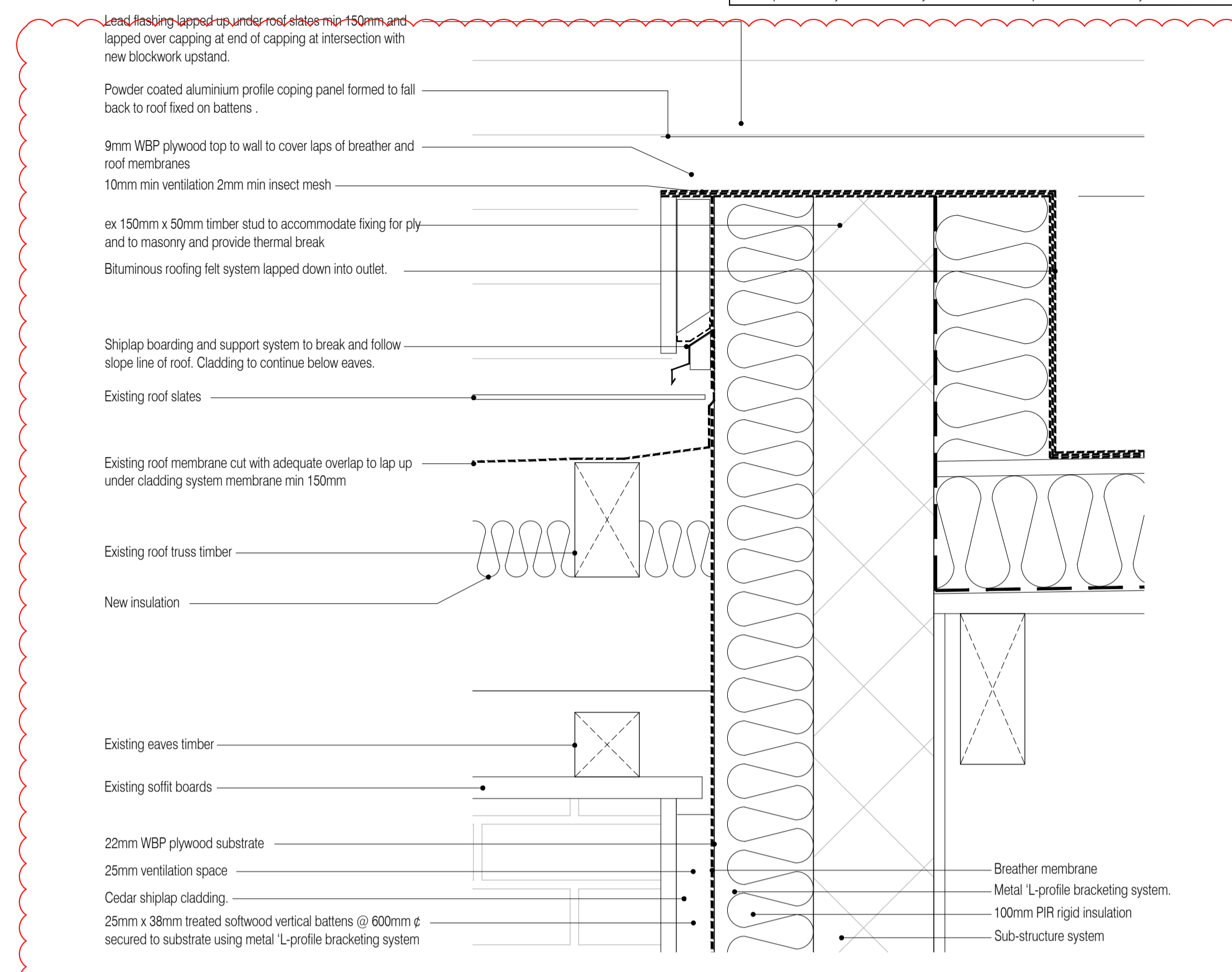
02 Bench Seat Half Height Wall Column Casing Detail
Scale: 1:5



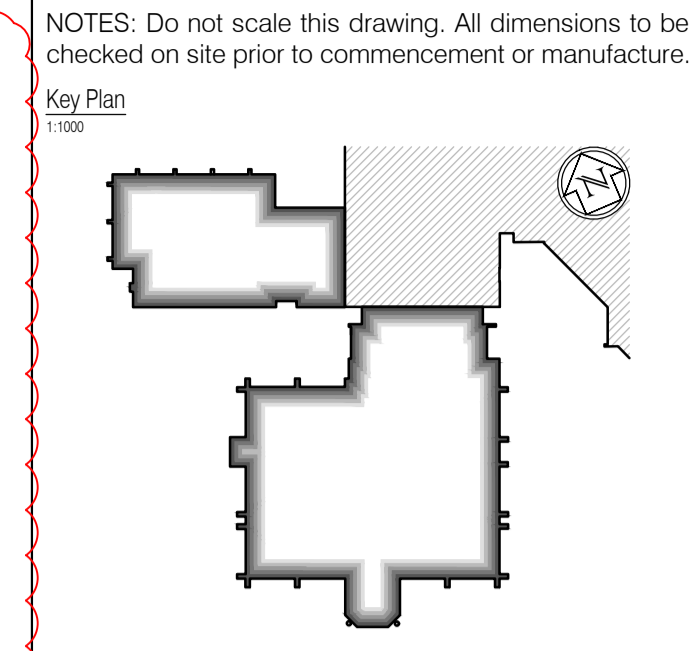
03 Under First Floor Bulkhead Detail
Scale: 1:5



04 Ground Floor Column Casing Detail
Scale: 1:5



05 Roof Abutment Flashing Detail
Scale: 1:5



NOTES: Do not scale this drawing. All dimensions to be checked on site prior to commencement or manufacture.

Key Plan
1:1000

ISSUED FOR CONSTRUCTION

NB: - Solid gray hatch denotes existing building fabric.

Rev	Date	By	Chk	Comment
B	13.10.11	RKC	JAS	Detail added
A	16.09.11	RKC	JAS	Status change - Issued for CONSTRUCTION

BRINGING IDEAS TO LIFE

FRANKHAM

Frankham Consultancy Group Limited
21 Perrymount Road
Haywards Heath RH16 3TP
t 01444 444900 f 01444 455642
enquiries@frankham.com
www.frankham.com

Client

WILLMOTT DIXON CONSTRUCTION

Project Title

Walden District Council
Hailsham Head Quarters
Refurbishments and Alterations

Drawing Title

Grid E (10 handed similar) Column Encasement,
Bulkhead and Partition
Details

Drawn by: RKC	Scale: 1:5@A1	Date: 15.06.11
Designed by: FCG	Checked by: JAS	Approved by: AC

File Ref.: X:\FRANKHAM\0216\WALDEN\04\ARCH\45_46_DETAL_S05M013 07180-A-405-005 - 2006110029	20.06.11:16:20:42
Drawing No. 521185-A-405	Rev. B