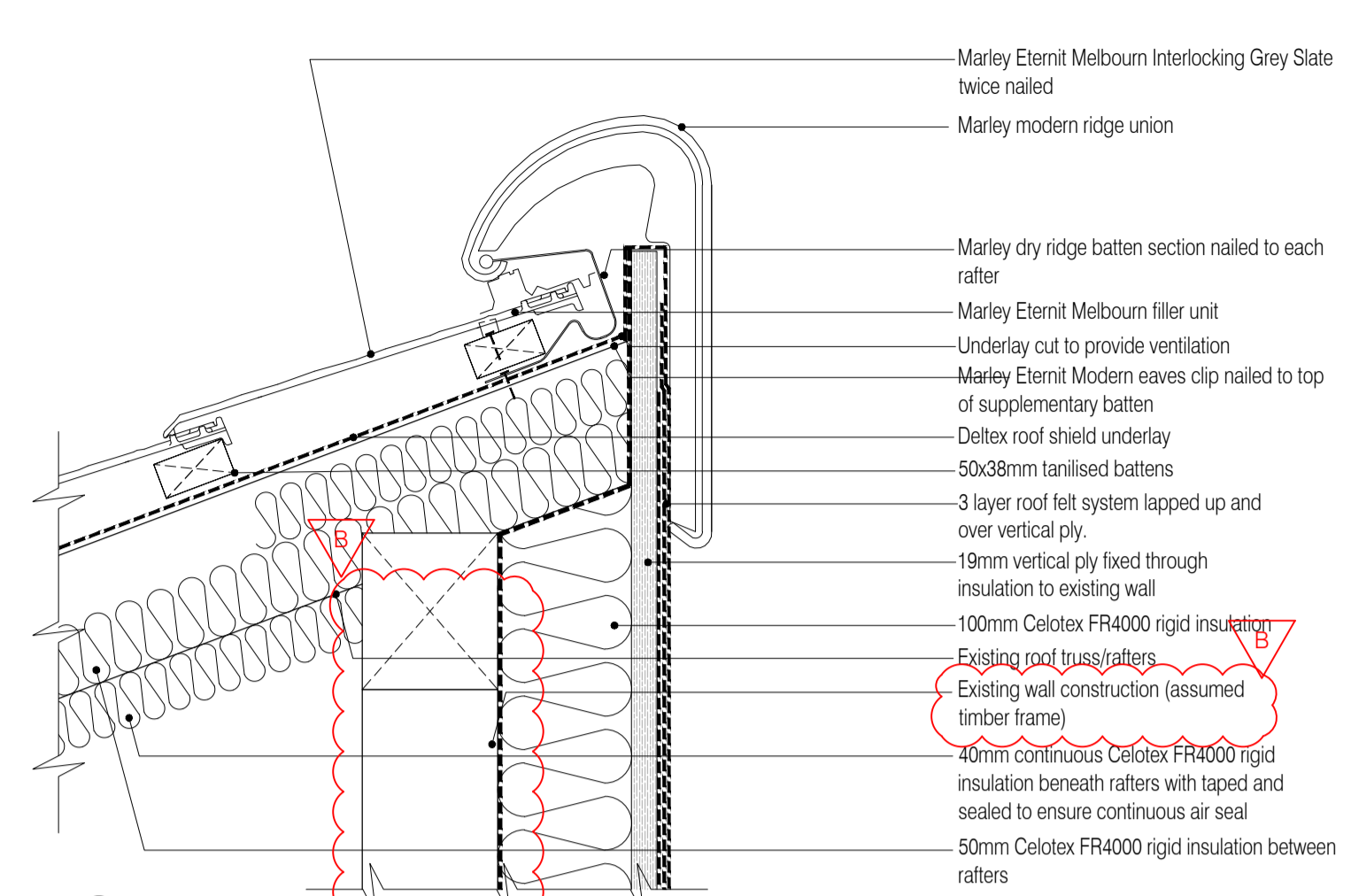
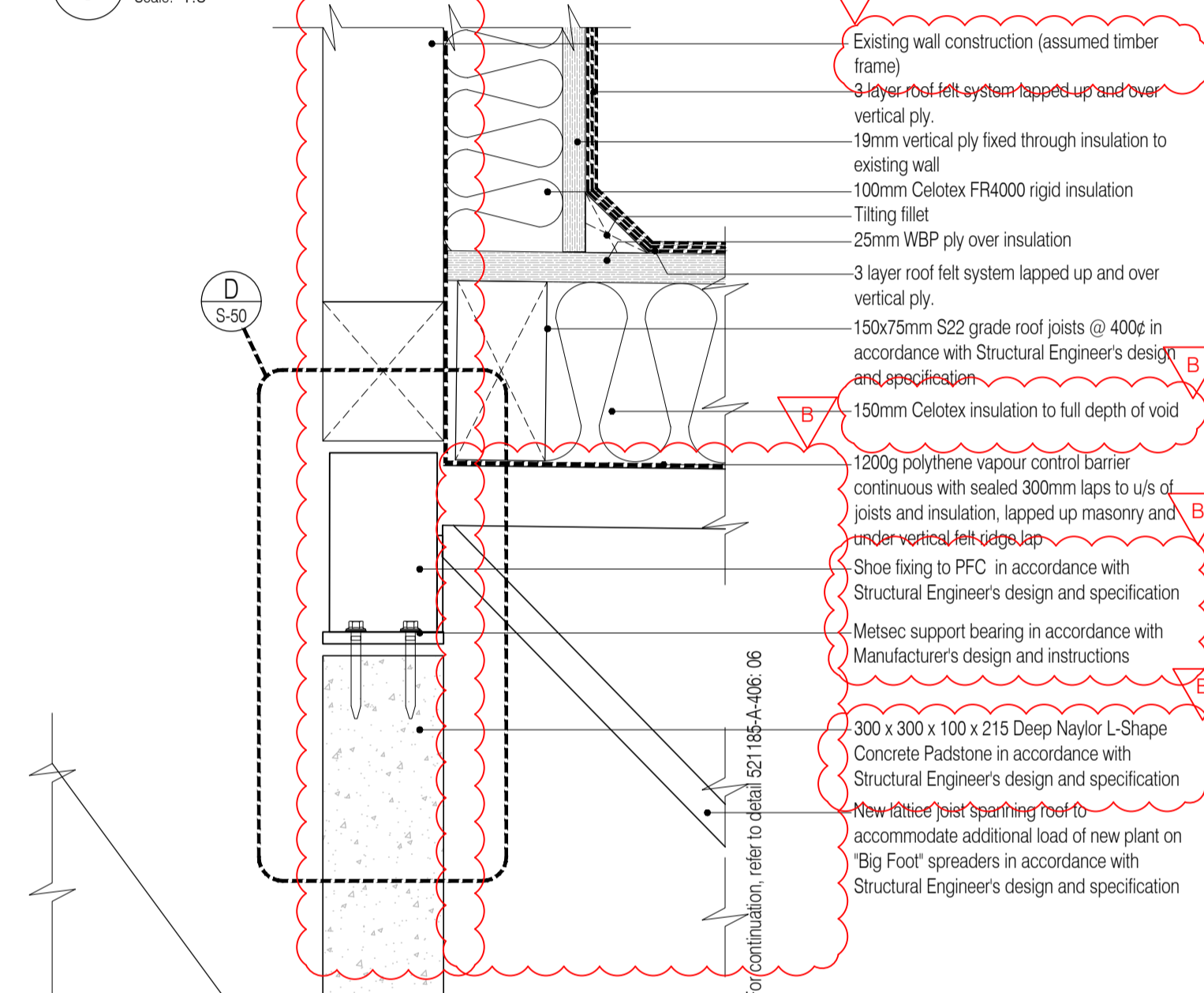


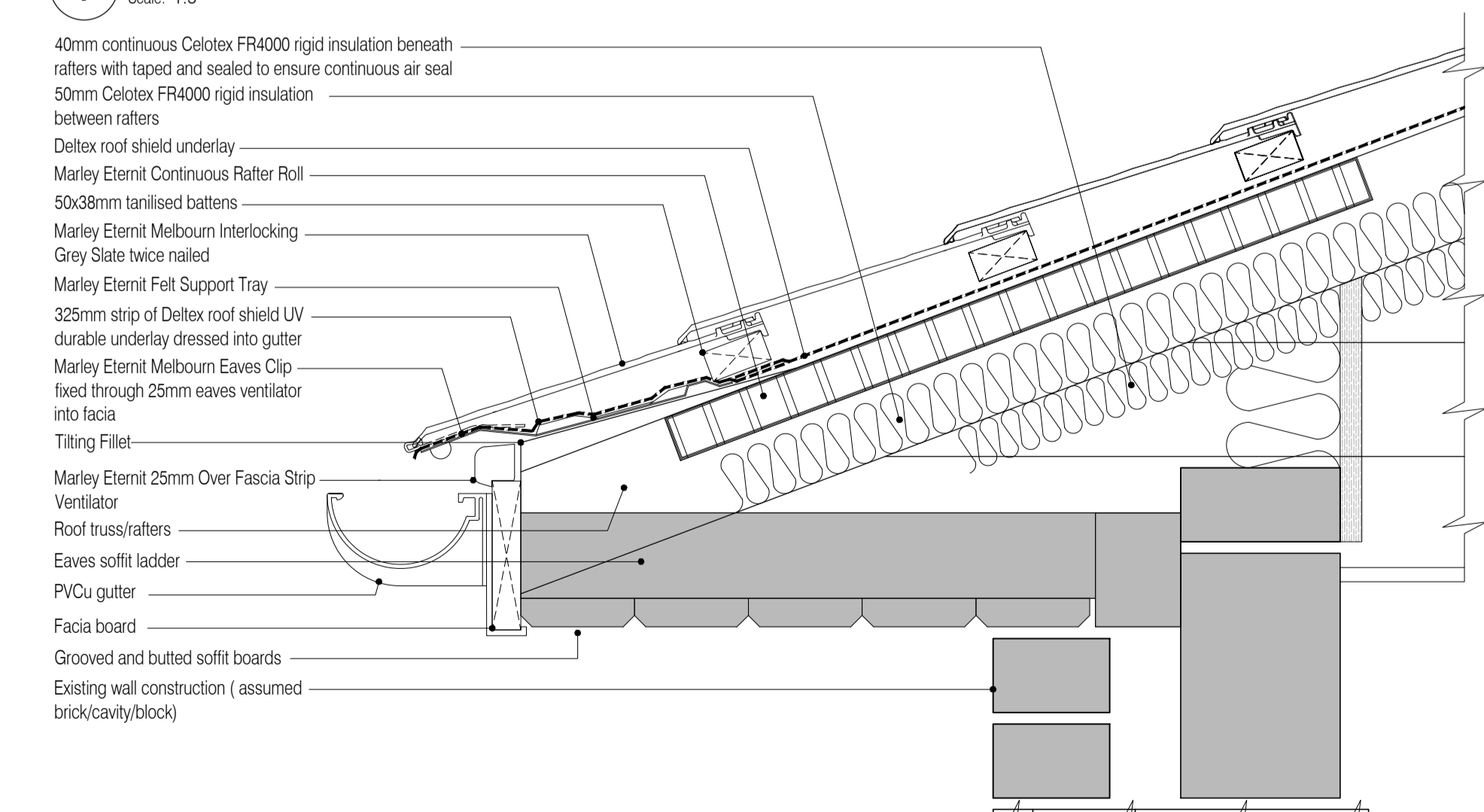
These drawings have been edited in accordance with Willmott Dixon's instructions. All material, product, volume, dimension and performance information is indicative only. FCG repudiates any and all liability for failure or non performance of any of the above mentioned items as indicated on this or any other FCG documentation.



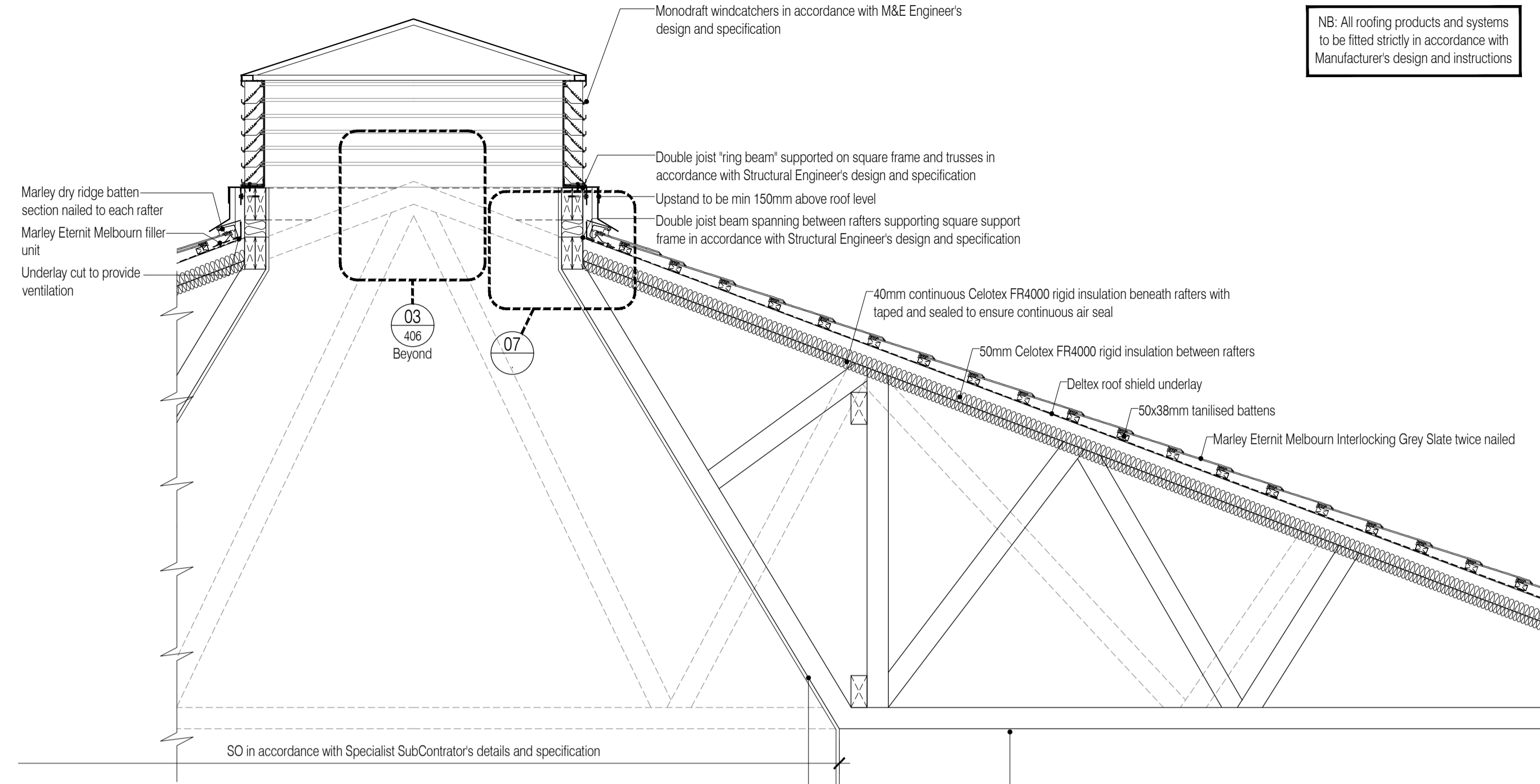
04 Community Hall Mono Pitched Ridge Detail
Scale: 1:5



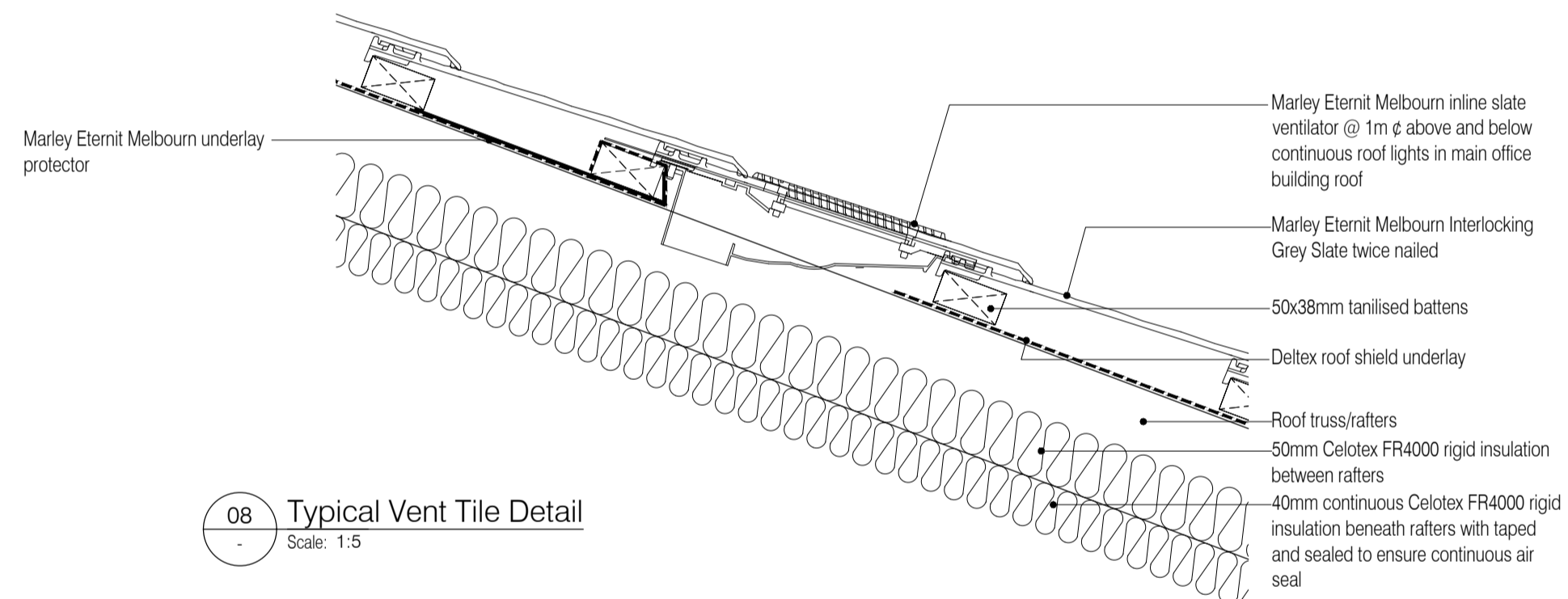
05 Community Hall Flat Roof Abutment Detail
Scale: 1:5



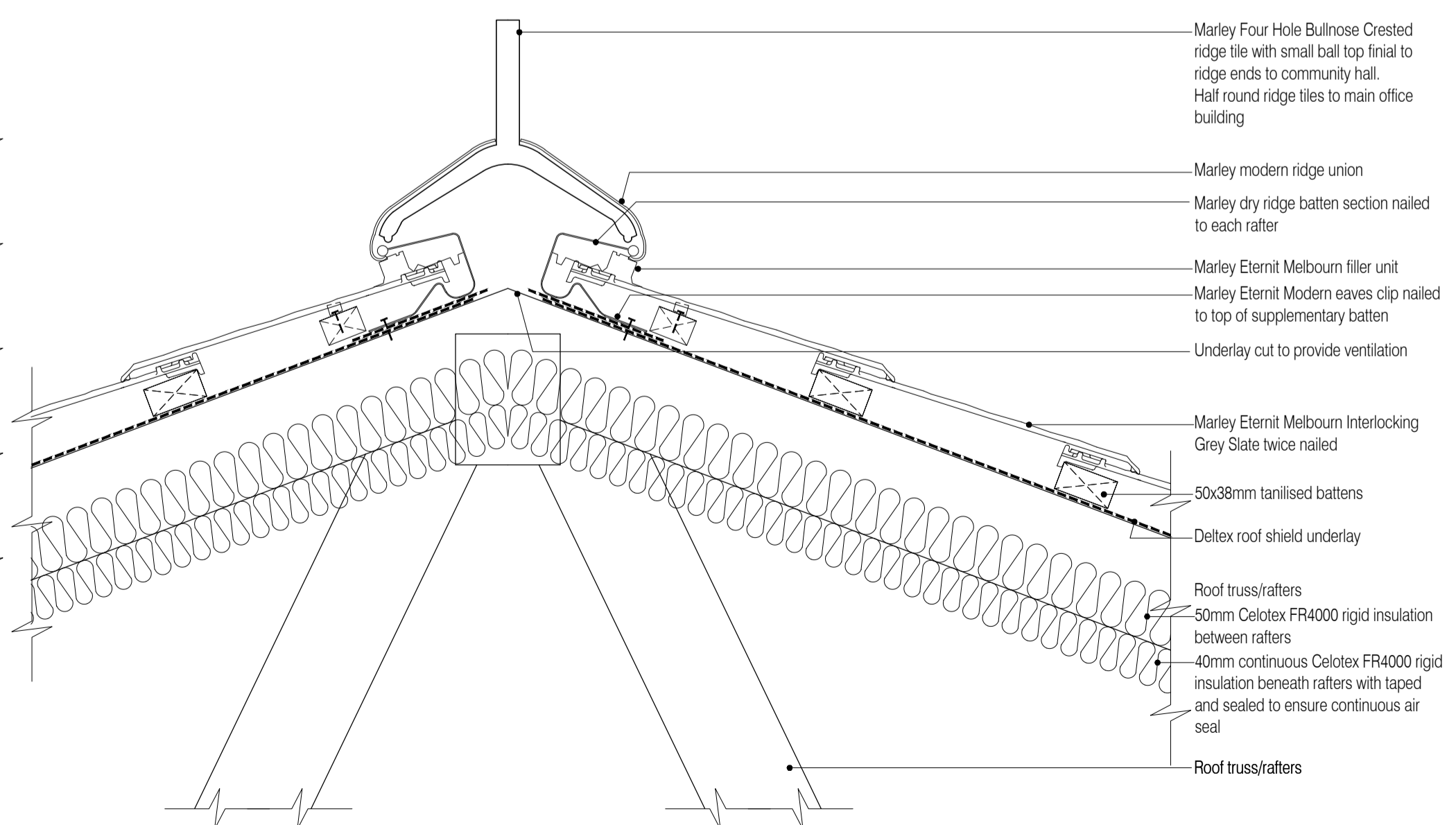
02 Typical Eaves Detail
Scale: 1:5



01 Community Hall Trimmed Truss Detail
Scale: 1:20

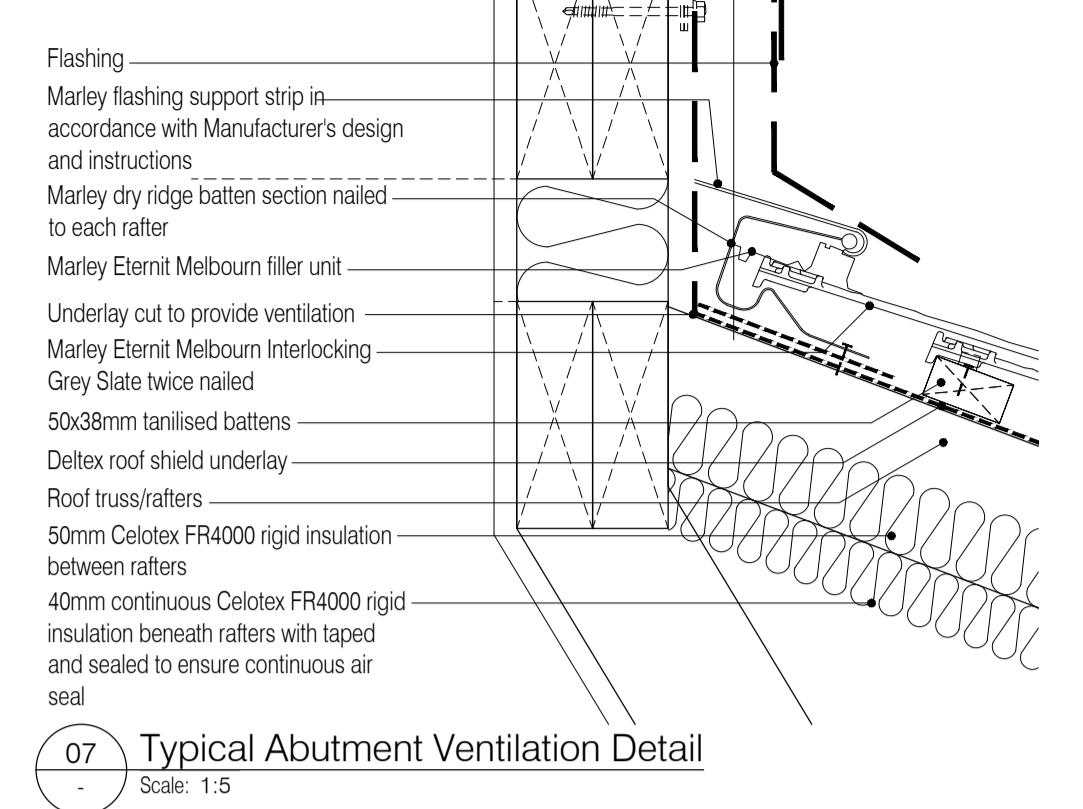


08 Typical Vent Tile Detail
Scale: 1:5

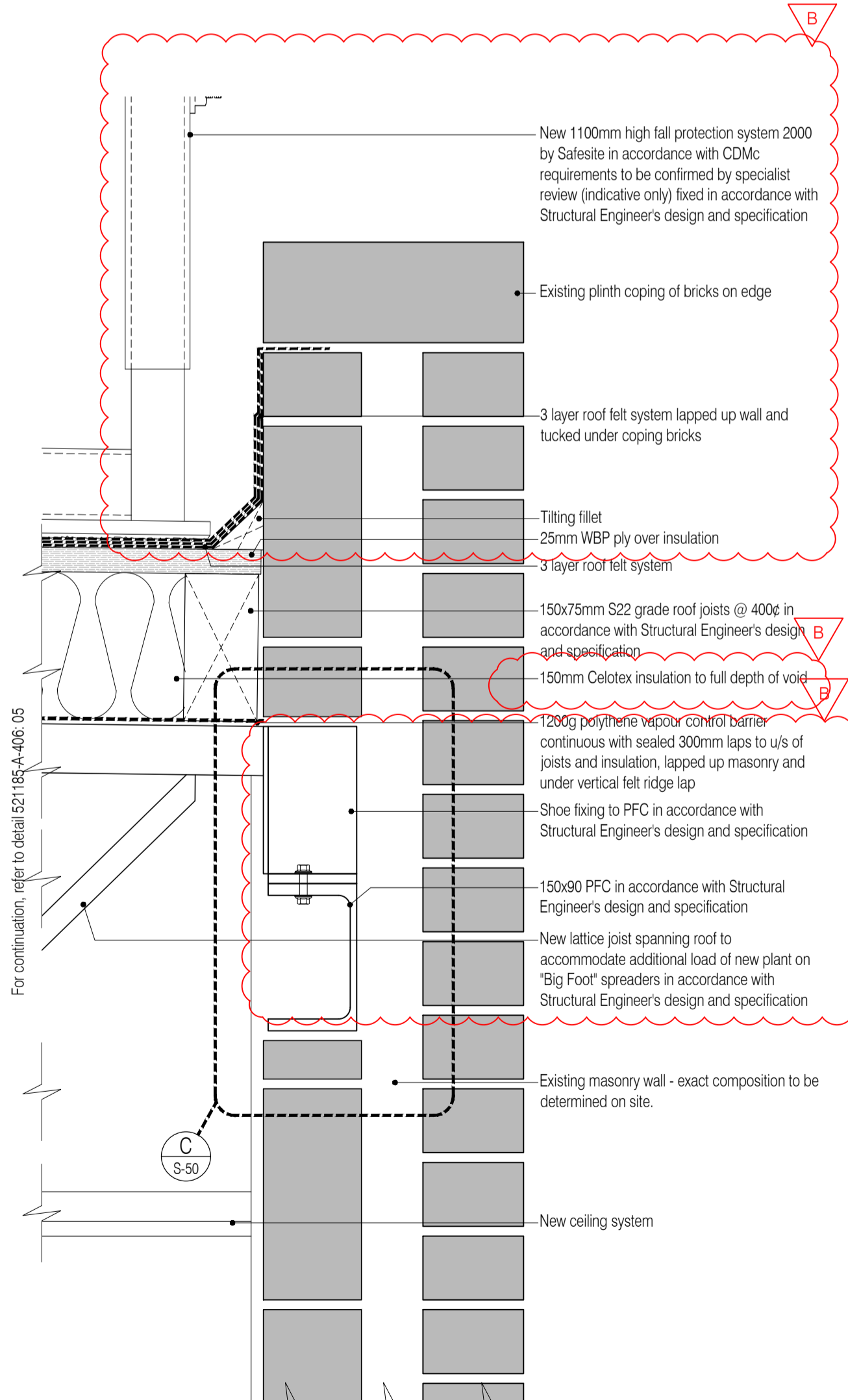


03 Typical Ridge Ventilation Detail
Scale: 1:5

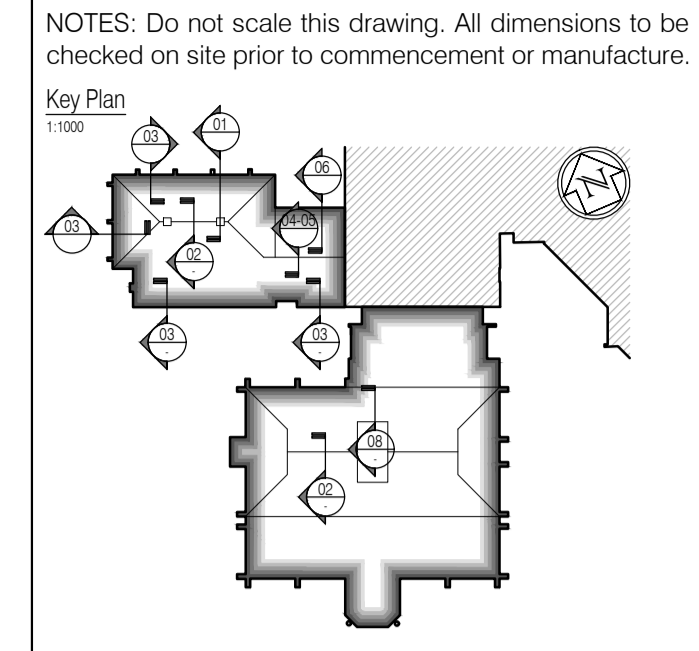
NB: All roofing products and systems to be fitted strictly in accordance with Manufacturer's design and instructions



07 Typical Abutment Ventilation Detail
Scale: 1:5



06 Community Hall Parapet Detail
Scale: 1:5



NOTES: Do not scale this drawing. All dimensions to be checked on site prior to commencement or manufacture.

ISSUED FOR CONSTRUCTION

NB: - Solid gray hatch denotes existing building fabric.

Rev	Date	By	Crk	Comment
B	28.11.11	RKC	JAS	General details revd.
A	16.09.11	RKC	JAS	Status change - Issued for CONSTRUCTION

BRINGING IDEAS TO LIFE

FRANKHAM

Frankham Consultancy Group Limited
21 Perryman Road
Haywards Heath RH16 3TP
t 01444 444000 f 01444 455642
enquiry@frankham.com
www.frankham.com

Client

WILLMOTT DIXON CONSTRUCTION

Project Title

Wealden District Council
Hailsham Head Quarters
Refurbishments and Alterations

Drawing Title

Typical Roof Details

Drawn by: RKC	Scale: 1:5, 20@A1	Date: 25.02.11
Designed by: FCG	Checked by: JAS	Approved by: AC

File Ref.: Y:\FRANKHAM\021185-A-406\04\406_DETAL_S04M0103	20.06.11:16:21:09
Drawing No. 521185-A-406	Rev. B

NB: All information based on supplied third party survey information. All discrepancies to be reported to FCG immediately upon discovery.

All Mechanical & Electrical and Structural information shown indicative only. Please refer to Mechanical & Electrical and Structural documentation.