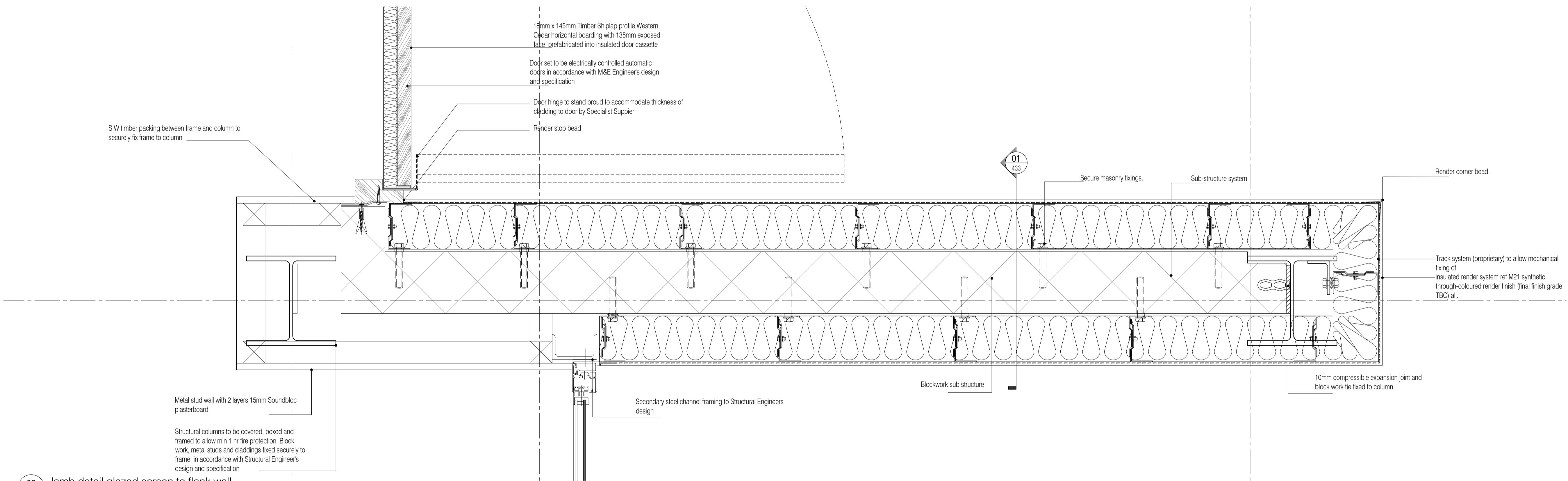
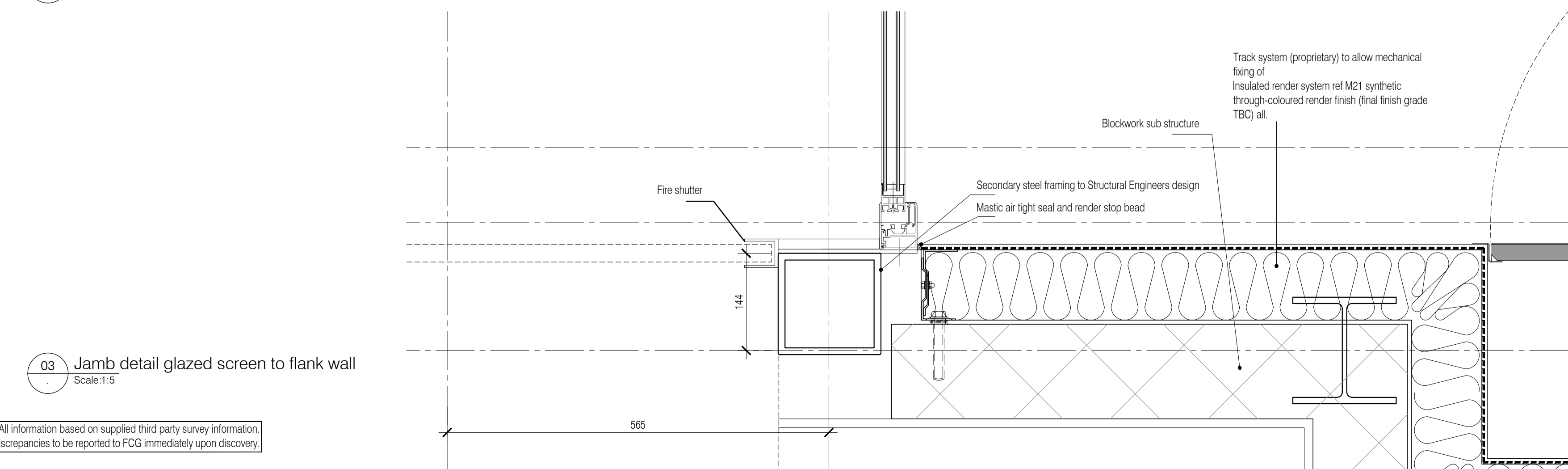


01 Jamb detail to flank wall
Scale:1:5



02 Jamb detail glazed screen to flank wall
Scale:1:5

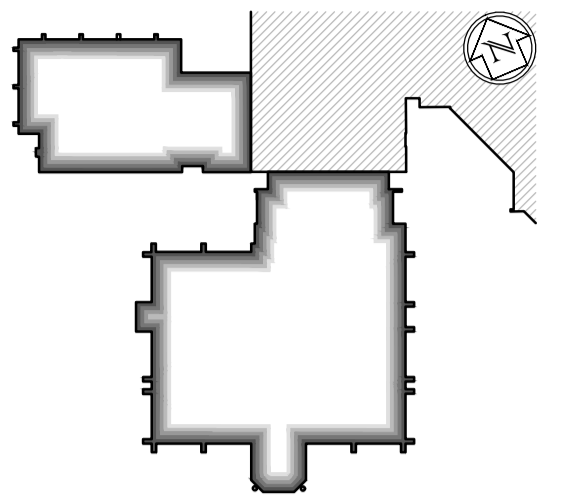


03 Jamb detail glazed screen to flank wall
Scale:1:5

NB: All information based on supplied third party survey information. All discrepancies to be reported to FCG immediately upon discovery.

NOTES: Do not scale this drawing. All dimensions to be checked on site prior to commencement or manufacture.

Key Plan
1:1000



All window details to be in accordance with and finalised by Velfac prior to manufacture and all drawings to be checked on site prior to installation. Architect to be informed on discovery of any discrepancy and work to cease on particular area until resolved with Manufacturer

ISSUED FOR CONSTRUCTION

NB: - Solid gray hatch denotes existing building fabric.

Rev	Date	By	Chk	Comment
A	16.09.11	RKC	JAS	Status change - Issued for CONSTRUCTION

BRINGING IDEAS TO LIFE



FRANKHAM

Frankham Consultancy Group Limited
21 Parnymount Road
Haywards Heath RH16 3TP
t 01444 444900 f 01444 455642
enquire@frankham.com
www.frankham.com

Client
WILLMOTT DIXON CONSTRUCTION

Project Title
Wealden District Council
Hailsham Head Quarters
Refurbishments and Alterations

Drawing Title
Plan Details
Sheet 02

Drawn by: RKC
Scale: 1:5@A1
Date: 13.05.11

Designed by: FCG
Checked by: JAS
Approved by: AC

File Ref.: X:\FRANKHAM\CG02\16\WEALDEN\DOORWAY_460_DETAL_SCHMATIC_02\16-A-410.DWG - 200611162139

Drawing No. 521185-A-410
Rev. A