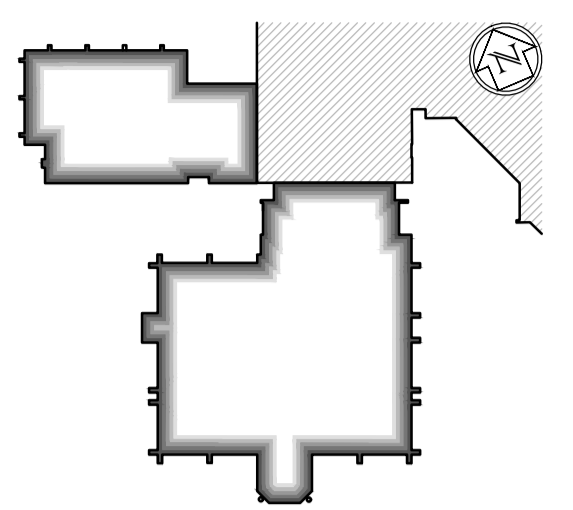
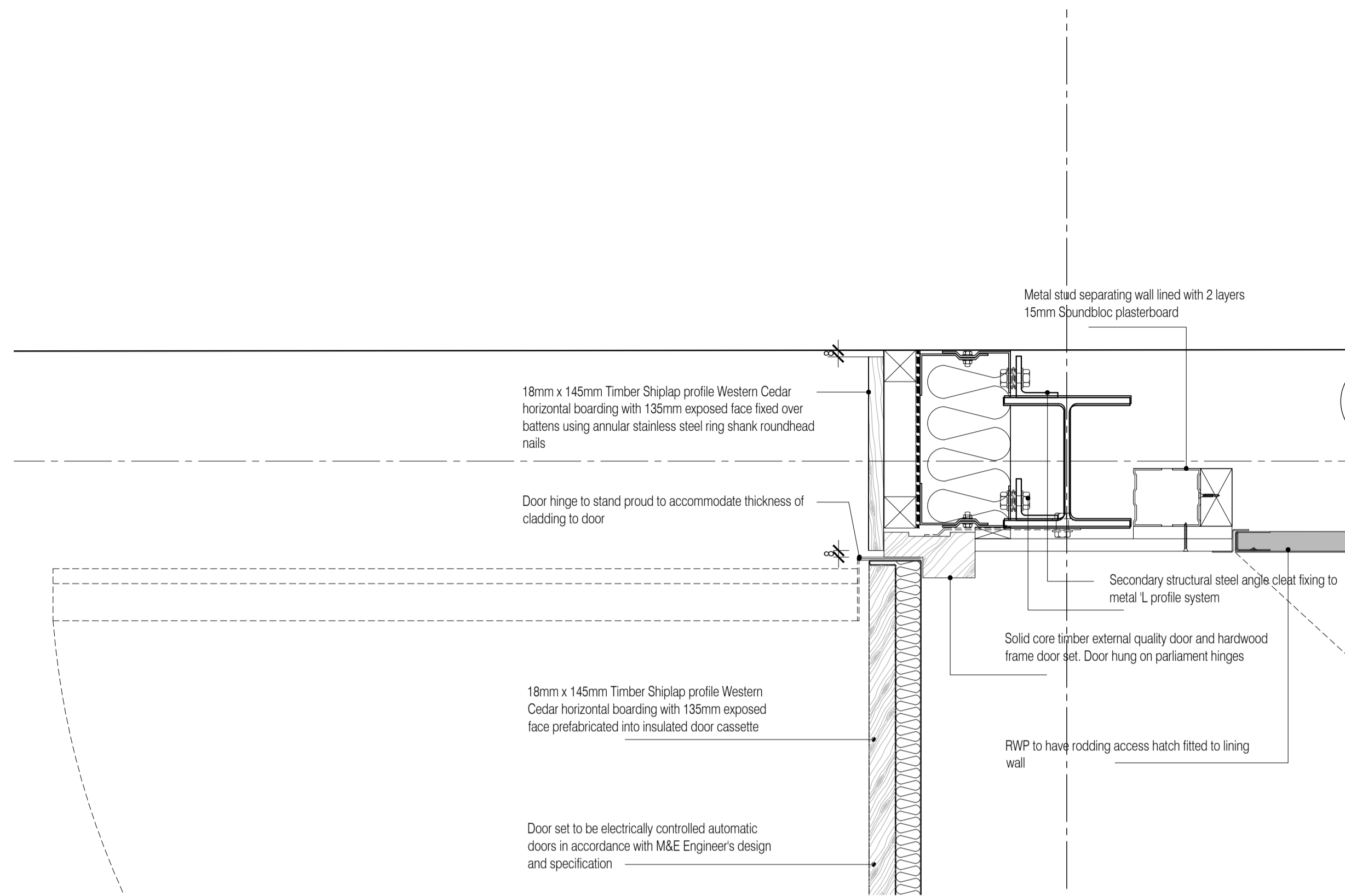


NOTES: Do not scale this drawing. All dimensions to be checked on site prior to commencement or manufacture.

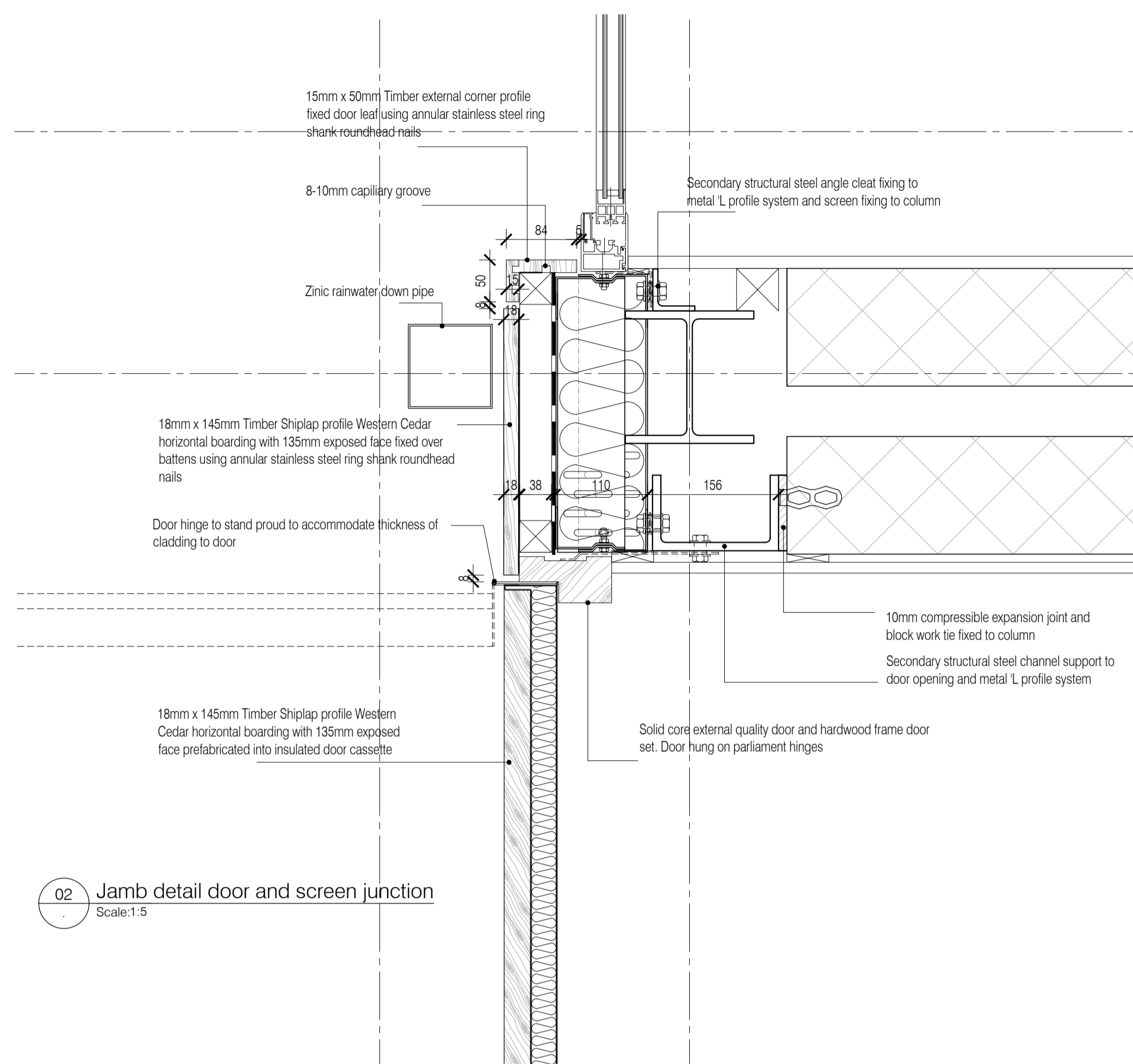
Key Plan
1:1000



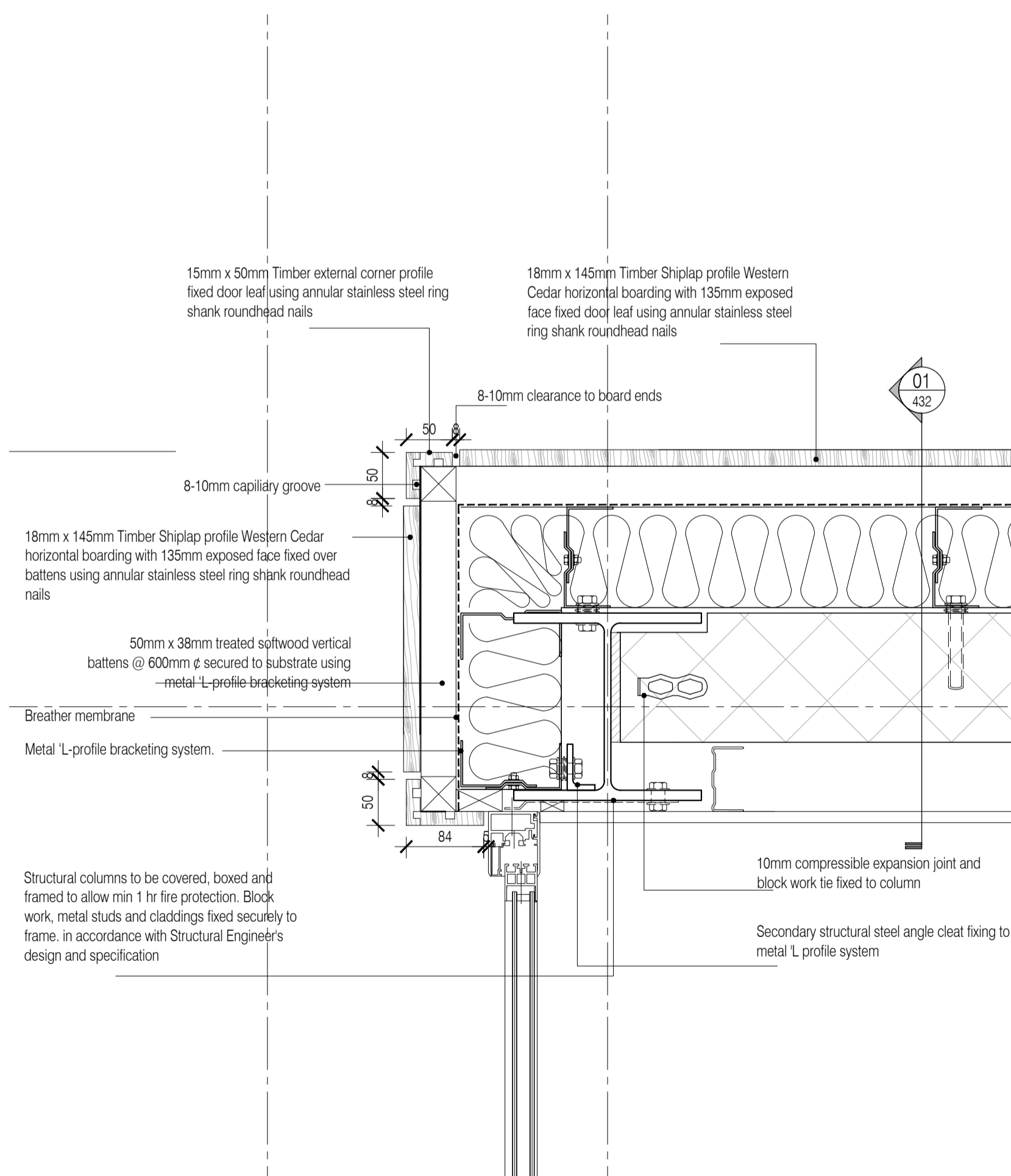
All window details to be in accordance with and finalised by Velfac prior to manufacture and all drawings to be checked on site prior to installation. Architect to be informed on discovery of any discrepancy and work to cease on particular area until resolved with Manufacturer



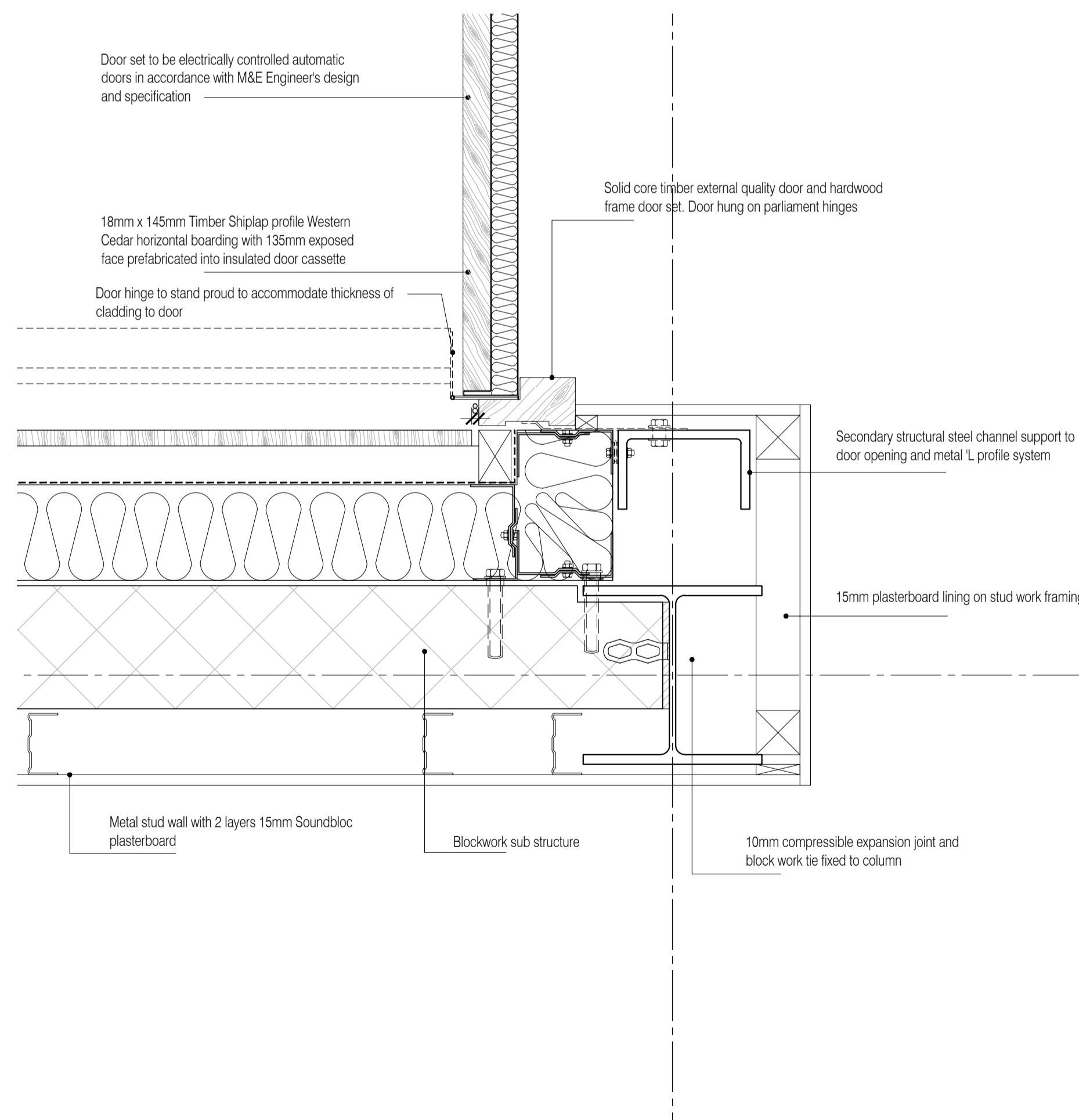
01 Jamb Detail
Scale:1:5



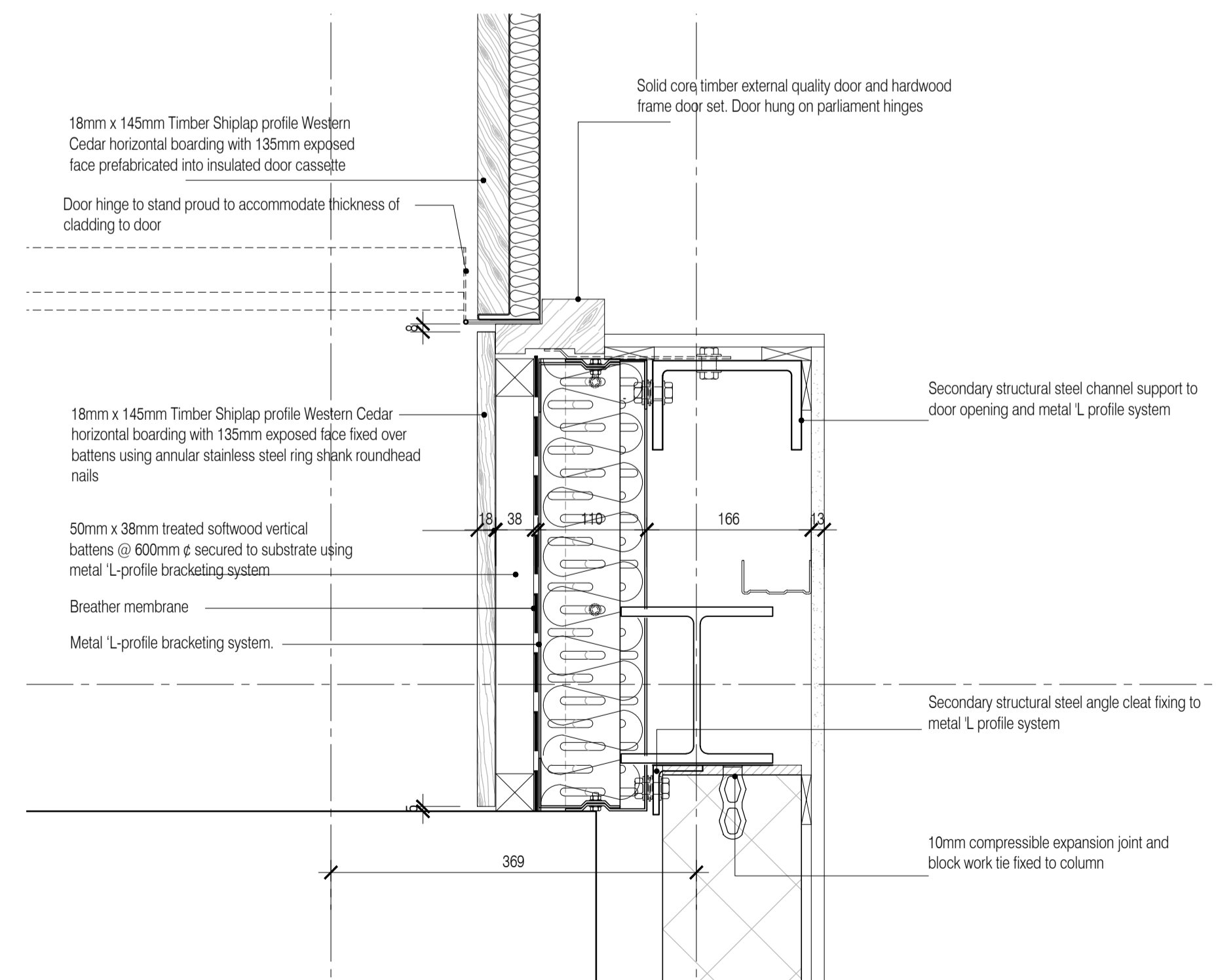
02 Jamb detail door and screen junction
Scale:1:5



03 Jamb detail glazed screen to flank wall
Scale:1:5



04 Flank wall and jamb detail
Scale:1:5



05 Jamb detail
Scale:1:5

ISSUED FOR CONSTRUCTION

NB: - Solid gray hatch denotes existing building fabric.

Rev A 16.09.11 RKC JAS Status change - Issued for CONSTRUCTION

Rev Date By Cmk Comment

BRINGING IDEAS TO LIFE



FRANKHAM

Frankham Consultancy Group Limited
21 Perrymount Road
Haywards Heath RH16 3TP
t 01444 444900 f 01444 425642
enquire@frankham.com
www.frankham.com

Client
WILLMOTT DIXON CONSTRUCTION

Project Title
Wealden District Council
Hailsham Head Quarters
Refurbishments and Alterations

Drawing Title
Plan Details
Sheet 1

Drawn by: RKC Scale: 1:5@A1 Date: 13.05.11
Designed by: FCG Checked by: JAS Approved by: AC

File Ref.: X:\FRANKHAM\2010\16\WEALDEN\DOOR\444-40 DETAIL.DWG 20.06.11 16:21:45

Drawing No. 521185-A-411 Rev. A

NB: All information based on supplied third party survey information. All discrepancies to be reported to FCG immediately upon discovery.