

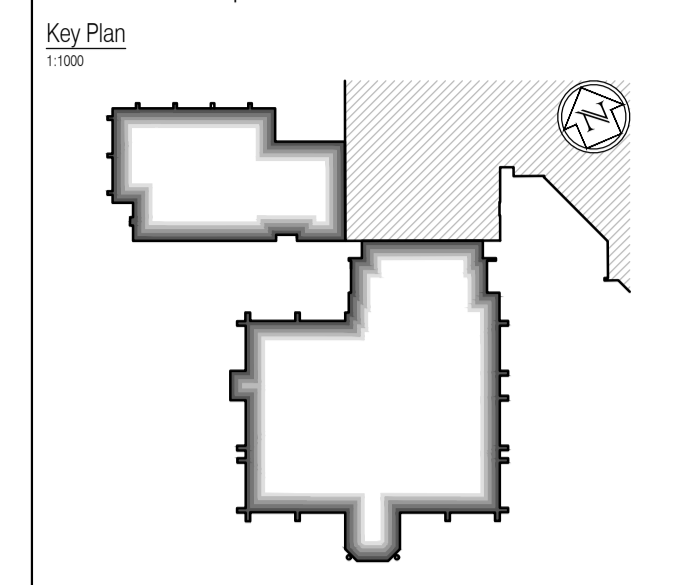
- design and specification
- Profile metal deck in accordance with Manufacturer's design and instructions
- Structural frame in accordance with Structural Engineer's design and specification
- Framing system by others fixed to u/s of concrete slab with adjustable rod system or steelwork as required to provide fixing of track system and retention of insulation
- Insulated render system ref M21 synthetic through-coloured render finish (final finish grade TBC)
- Proprietary breather membrane
- Track system (proprietary) to allow mechanical fixing of Insulated render system
- PVC mesh angle bead in accordance with Manufacturer's design and instructions
- Insulated render system ref M21 synthetic through-coloured render finish (final finish grade TBC)

01 Head detail window and brise soleil
Scale:1:5

02 Head detail
Scale:1:5

03 Threshold detail to bi-parting doors and side screen
Scale:1:5

NOTES: Do not scale this drawing. All dimensions to be checked on site prior to commencement or manufacture.



All window details to be in accordance with and finalised by Velfac prior to manufacture and all drawings to be checked on site prior to installation. Architect to be informed on discovery of any discrepancy and work to cease on particular area until resolved with Manufacturer

ISSUED FOR CONSTRUCTION

NB: - Solid gray hatch denotes existing building fabric.

Rev	Date	By	Crk	Comment
C	21.02.12	JAS	AC	Over-door air curtain added
B	17.11.11	JAS	AC	Render stopped around steel junctions.
A	16.09.11	RKC	JAS	Status change - Issued for CONSTRUCTION

BRINGING IDEAS TO LIFE

FRANKHAM

Frankham Consultancy Group Limited
21 Pymms Road
Haywards Heath RH16 3TP
t 01444 444900 f 01444 455642
enquire@frankham.com
www.frankham.com

Client

WILLMOTT DIXON CONSTRUCTION

Project Title

Wealden District Council
Hailsham Head Quarters
Refurbishments and Alterations

Drawing Title

Link Block Details
Sectional Details
Sheet 3

Drawn by: RKC	Scale: 1:5@A1	Date: 16.05.11
Designed by: FCG	Checked by: JAS	Approved by: AC

Drawing No. 521185-A-414	Rev. C
-----------------------------	-----------

NB: All information based on supplied third party survey information. All discrepancies to be reported to FCG immediately upon discovery.