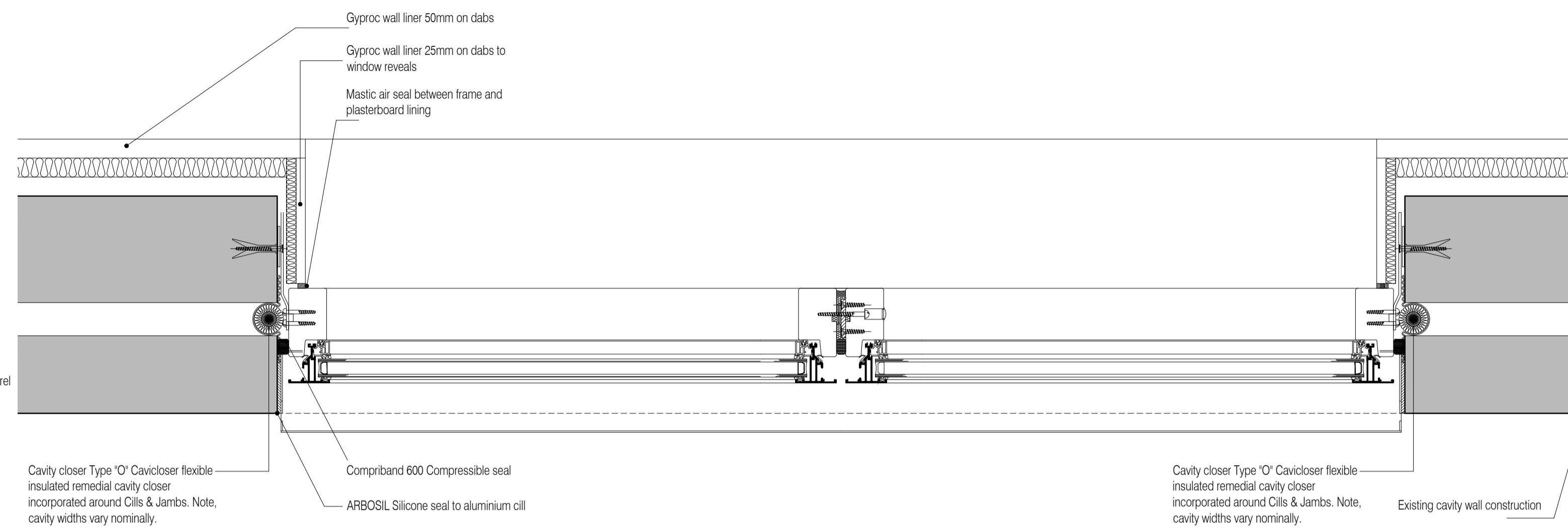
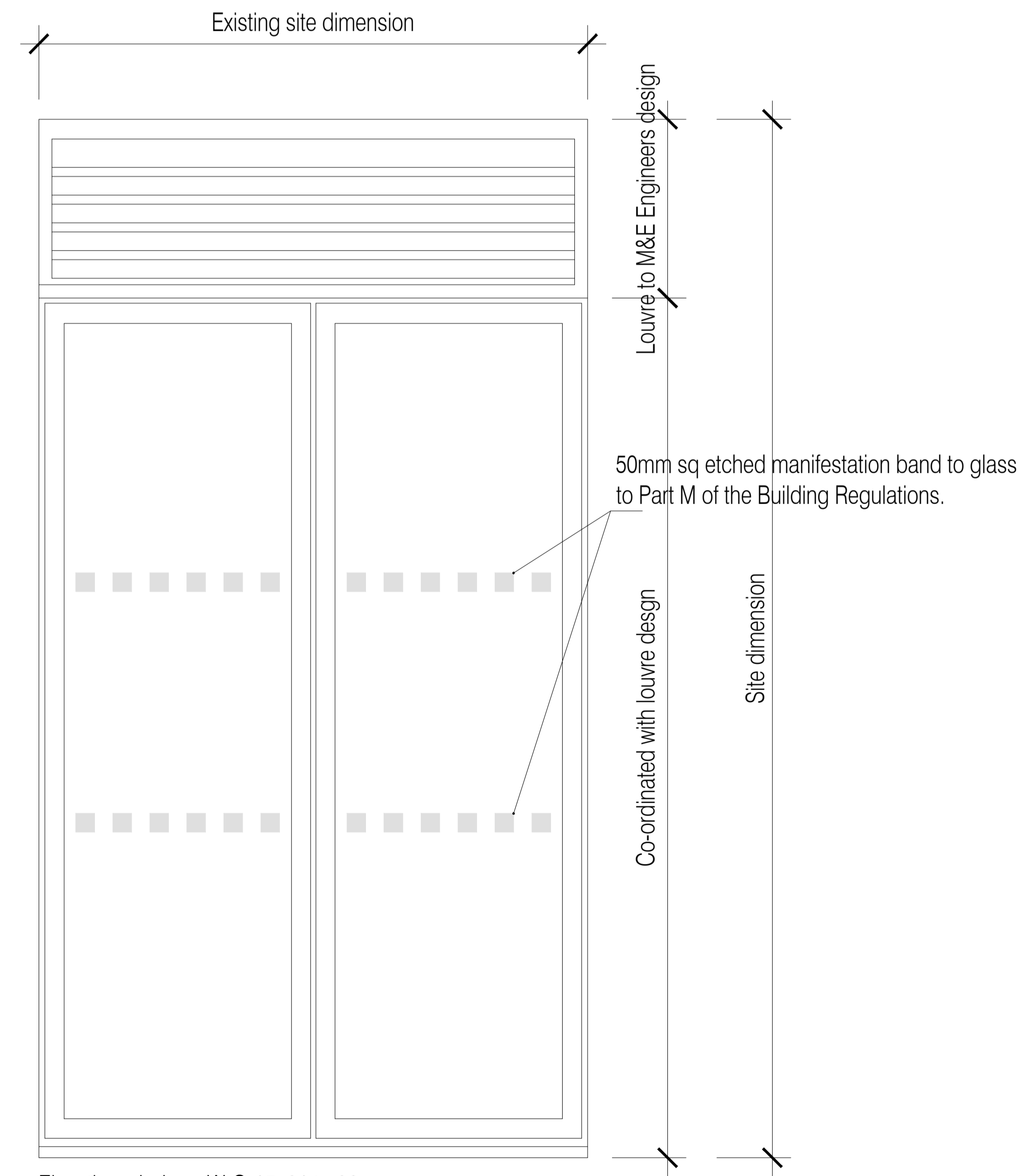


01 Head detail
Scale:1:5

02 Sill detail
Scale:1:5



03 Jamb detail
Scale:1:5



04 Elevation
Scale:1:10

Elevation windows W-G-15, 01 to 06

NOTES: Do not scale this drawing. All dimensions to be checked on site prior to commencement or manufacture.
Key Plan
1:1000

All window details to be in accordance with and finalised by Velfac prior to manufacture and all drawings to be checked on site prior to installation. Architect to be informed on discovery of any discrepancy and work to cease on particular area until resolved with Manufacturer

ISSUED FOR CONSTRUCTION

NB: - Solid gray hatch denotes existing building fabric.

| Rev | Date | By | Chk | Comment |
|-----|----------|-----|-----|---|
| A | 16.09.11 | RKC | JAS | Status change - Issued for CONSTRUCTION |

BRINGING IDEAS TO LIFE

FRANKHAM

Frankham Consultancy Group Limited
21 Pymms Road
Haywards Heath RH16 3TP
t 01444 444900 f 01444 455642
enquire@frankham.com
www.frankham.com

Client

WILLMOTT DIXON CONSTRUCTION

Project Title

Wealden District Council
Hailsham Head Quarters
Refurbishments and Alterations

Drawing Title

Typical Window / Louver Infill Units
Reception (G15)
Details

| | | |
|--|--------------------------|--------------------|
| Drawn by: RKC | Scale: 1:5 + 1:10 @A1 | Date: 20.05.11 |
| Designed by: FCG | Checked by: JAS | Approved by: AC |
| File Ref.: X:\FRANKHAM\2011\16\WALDEN\04\ARCH\45_460_DETAL_S04EM013_07180-A-415.DWG - 2008110204 20.06.11:16:22:03 | | |

| | |
|-----------------------------|-----------|
| Drawing No. 521185-A-415 | Rev. A |
|-----------------------------|-----------|

NB: All information based on supplied third party survey information. All discrepancies to be reported to FCG immediately upon discovery.