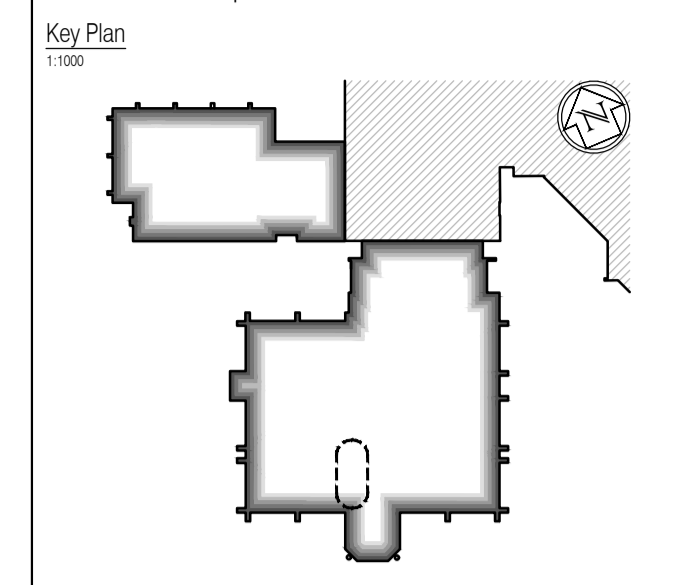


NB: All information based on supplied third party survey information.  
All discrepancies to be reported to FCG immediately upon discovery.

NOTES: Do not scale this drawing. All dimensions to be checked on site prior to commencement or manufacture.



ISSUED FOR CONSTRUCTION

NB: - Solid gray hatch denotes existing building fabric.

Rev	Date	By	Chk	Comment
B	21.12.11	JAS	AC	Bulkheads amended + screen accordingly
A	16.09.11	RKC	JAS	Status change - Issued for CONSTRUCTION

BRINGING IDEAS TO LIFE

**FRANKHAM**

Frankham Consultancy Group Limited  
21 Parnymount Road  
Haywards Heath RH16 3TP  
t 01444 444900 f 01444 455642  
enquire@frankham.com  
www.frankham.com

Client

**WILLMOTT DIXON CONSTRUCTION**

Project Title

Wealden District Council  
Hailsham Head Quarters  
Refurbishments and Alterations

Drawing Title

Screen details  
Between General Office G24 and Cafe G02  
Sheet 1

Drawn by: RKC	Scale: Sheet 1	Date: 26.05.11
Designed by: FCG	Checked by: JAS	Approved by: AC

File Ref.: X:\FRANKHAM\2010\16\WALDEN\00\ARCH\422 DETAIL SCHEMATIC 01185-A-422-001 - 2008110207	Drawing No. 521185-A-422	Rev. B
---	-----------------------------	-----------