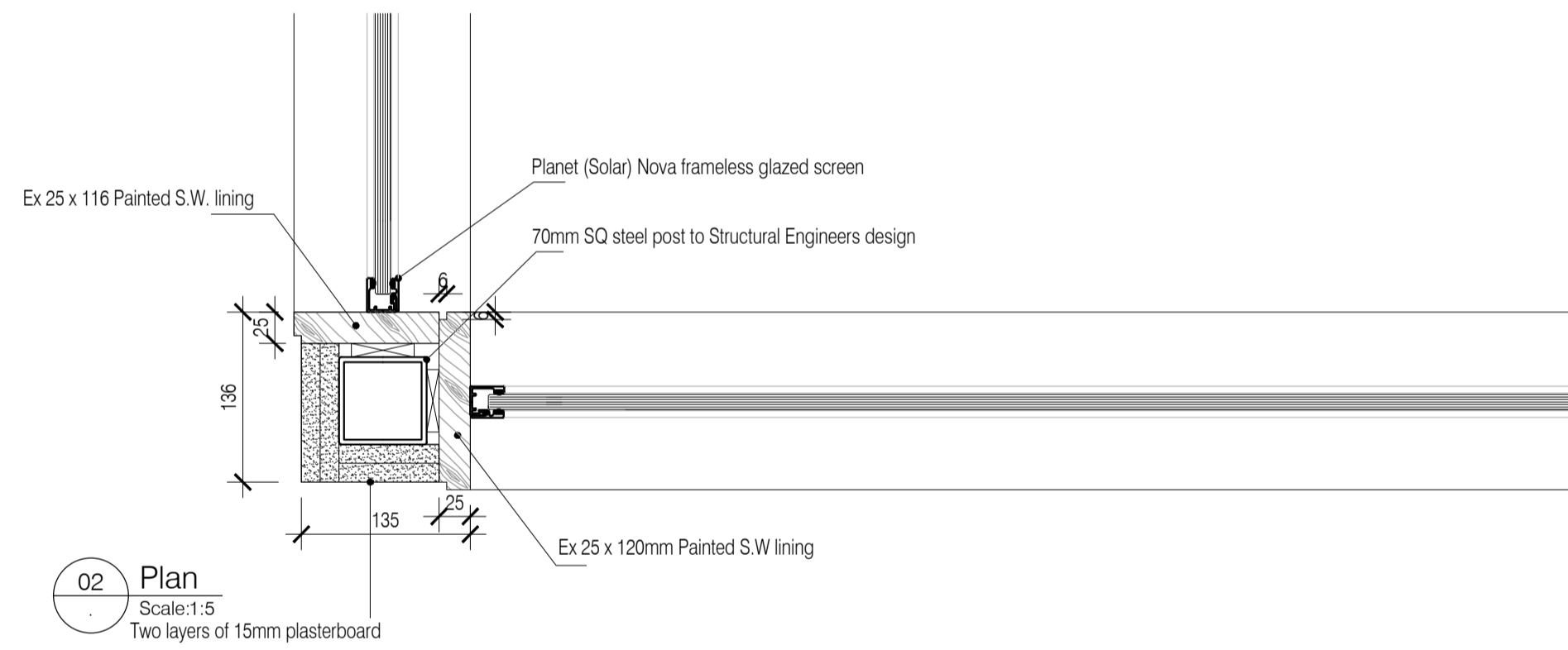
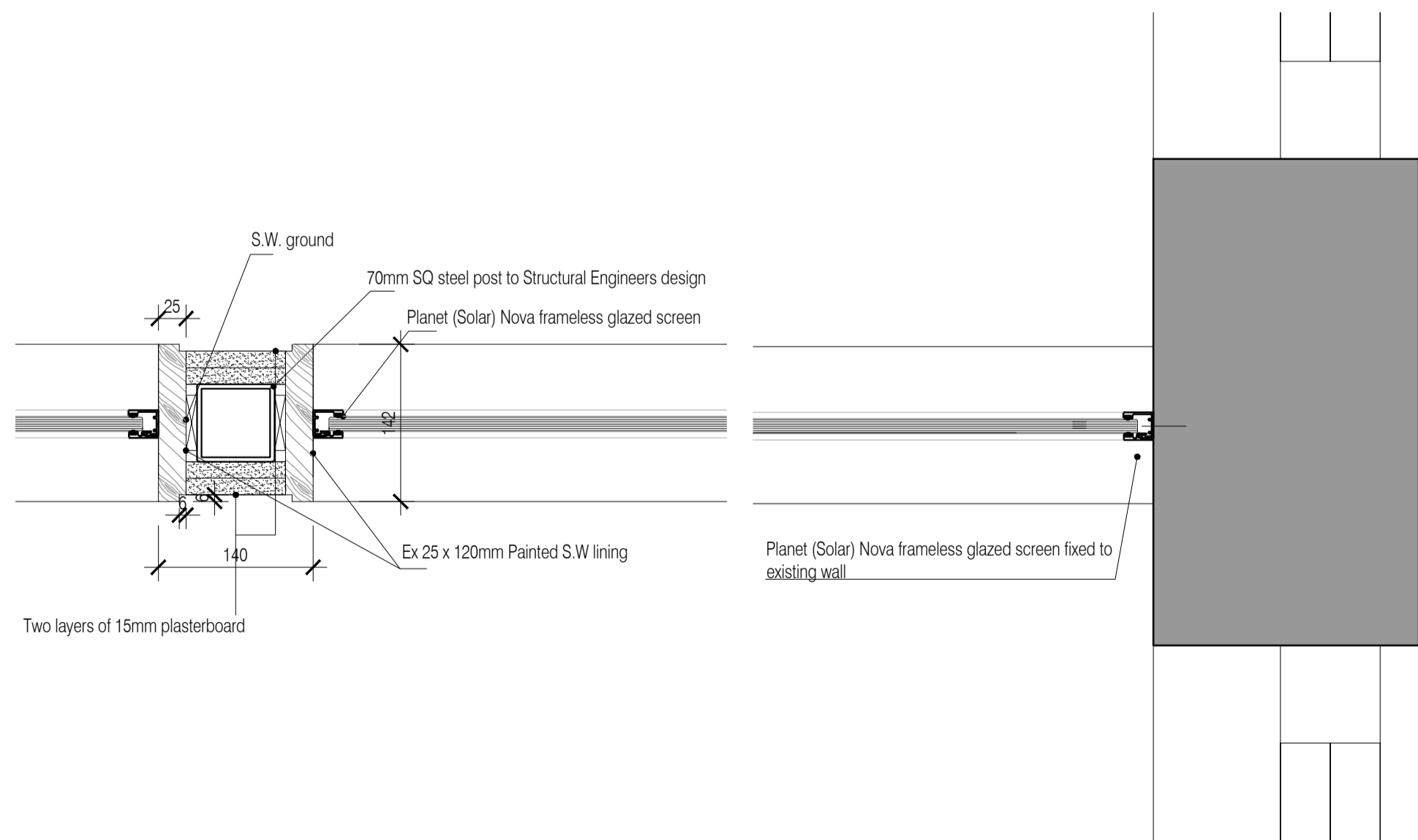


01 Plan
Scale:1:5

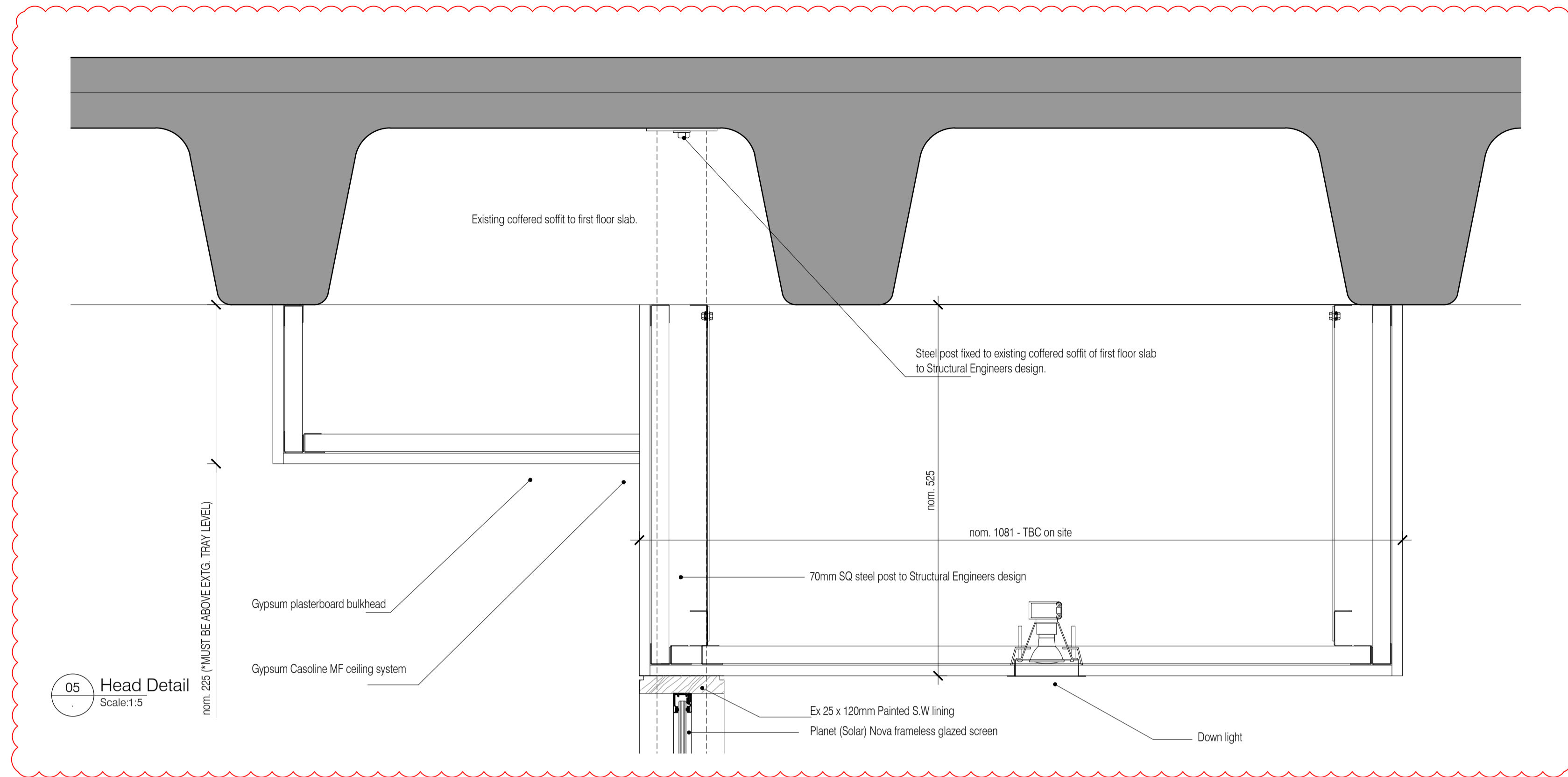


02 Plan
Scale:1:5
Two layers of 15mm plasterboard



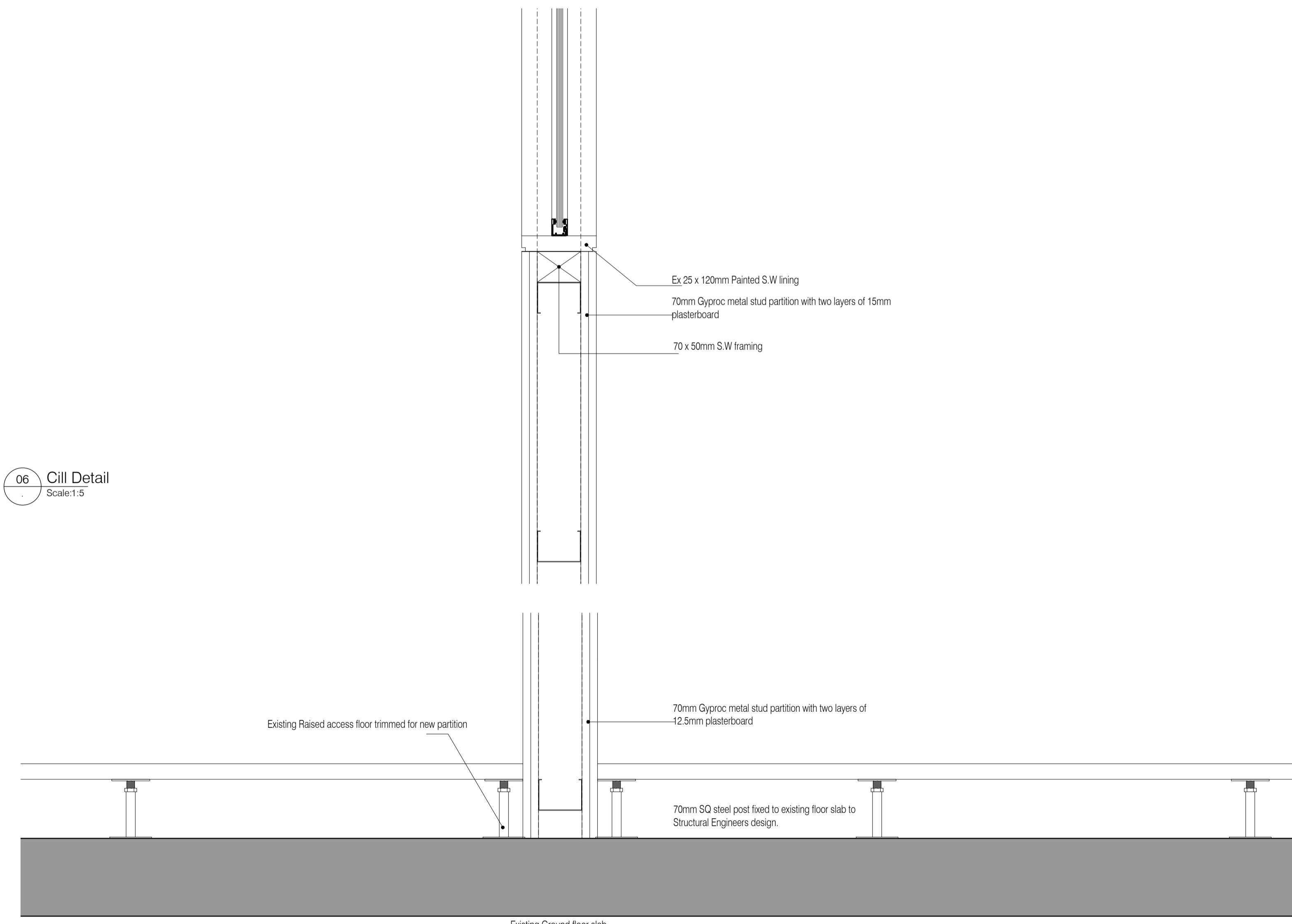
03 Plan
Scale:1:5

04 Plan
Scale:1:5



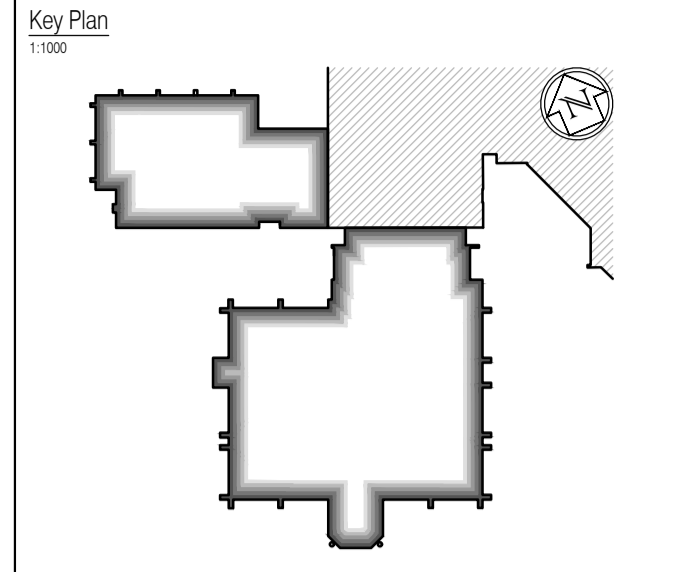
05 Head Detail
Scale:1:5

06 Cill Detail
Scale:1:5



07 Base Detail
Scale:1:5

NOTES: Do not scale this drawing. All dimensions to be checked on site prior to commencement or manufacture.



ISSUED FOR CONSTRUCTION

NB: - Solid gray hatch denotes existing building fabric.

Rev	Date	By	Chk	Comment
B	21.12.11	JAS	AC	Bulkheads amended + screen accordingly
A	16.09.11	RKC	JAS	Status change - Issued for CONSTRUCTION

BRINGING IDEAS TO LIFE

FRANKHAM

Frankham Consultancy Group Limited
21 Pymms Road
Haywards Heath RH16 3TP
t 01444 444900 f 01444 455642
enquire@frankham.com
www.frankham.com

Client

WILLMOTT DIXON CONSTRUCTION

Project Title

Wealden District Council
Hailsham Head Quarters
Refurbishments and Alterations

Drawing Title

Internal screen details
Between General Office G24 and Cafe G02
Sheet 2

Drawn by: RKC	Scale: 1:5 @A1	Date: 26.05.11
------------------	-------------------	-------------------

Designed by: FCG	Checked by: JAS	Approved by: AC
---------------------	--------------------	--------------------

File Ref.:	X:\FRANKHAM\2006\16\WALDEN\CONTRACT\46 DETAIL SCHEMATIC\521185-A-423.dwg - 200611162302
------------	---

Drawing No. 521185-A-423	Rev. B
-----------------------------	-----------

NB: All information based on supplied third party survey information. All discrepancies to be reported to FCG immediately upon discovery.