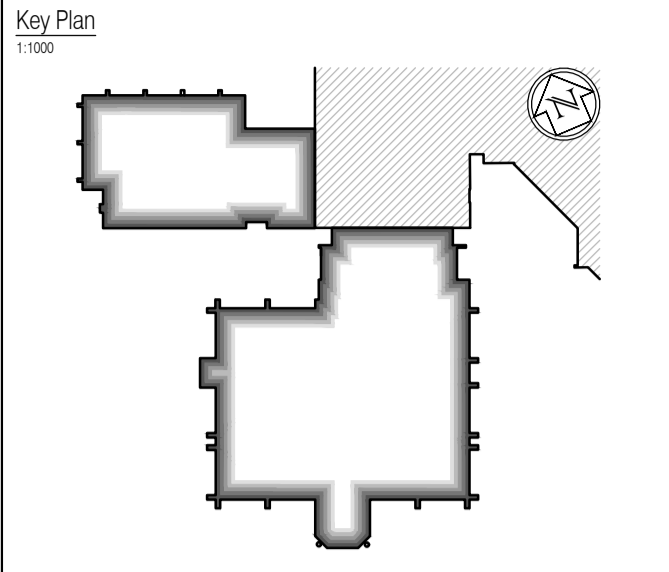


NOTES: Do not scale this drawing. All dimensions to be checked on site prior to commencement or manufacture.



All window details to be in accordance with and finalised by Veflac prior to manufacture and all drawings to be checked on site prior to installation. Architect to be informed on discovery of any discrepancy and work to cease on particular area until resolved with Manufacturer

ISSUED FOR CONSTRUCTION

NB: - Solid gray hatch denotes existing building fabric.

Rev	Date	By	Chk	Comment
A	16.09.11	FRK	JAS	Status change - Issued for CONSTRUCTION

BRINGING IDEAS TO LIFE

FRANKHAM

Frankham Consultancy Group Limited
 21 Plympton Road
 Heywards Heath RH16 3TP
 t 01444 444900 f 01444 455642
 enquiry@frankham.com
 www.frankham.com

Client

WILLMOTT DIXON CONSTRUCTION

Project Title

Wealden District Council
 Hailsham Head Quarters
 Refurbishments and Alterations

Drawing Title

Plan details
 Grid line C
 Second floor level
 Sheet 2

Drawn by: FRK	Scale: 1:5 @A1	Date: 02.06.11
Designed by: FCG	Checked by: JAS	Approved by: RC

File Ref.: X:\FRANKHAM\2011\16\WALDEN\02\ARCH\45_46_DETAL_SCHMATIC_02110-4-031.DWG - 20111023 20.06.11.16.23.31

Drawing No. **521185-A-428** Rev. **A**

NB: All information based on supplied third party survey information. All discrepancies to be reported to FCG immediately upon discovery.