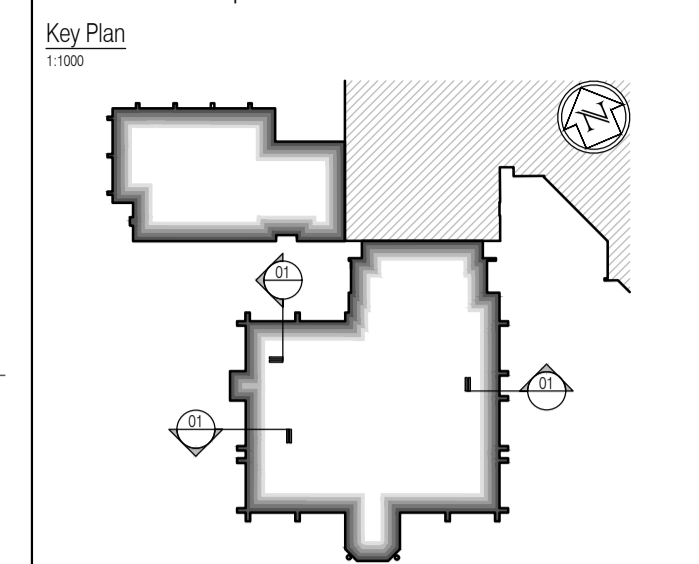
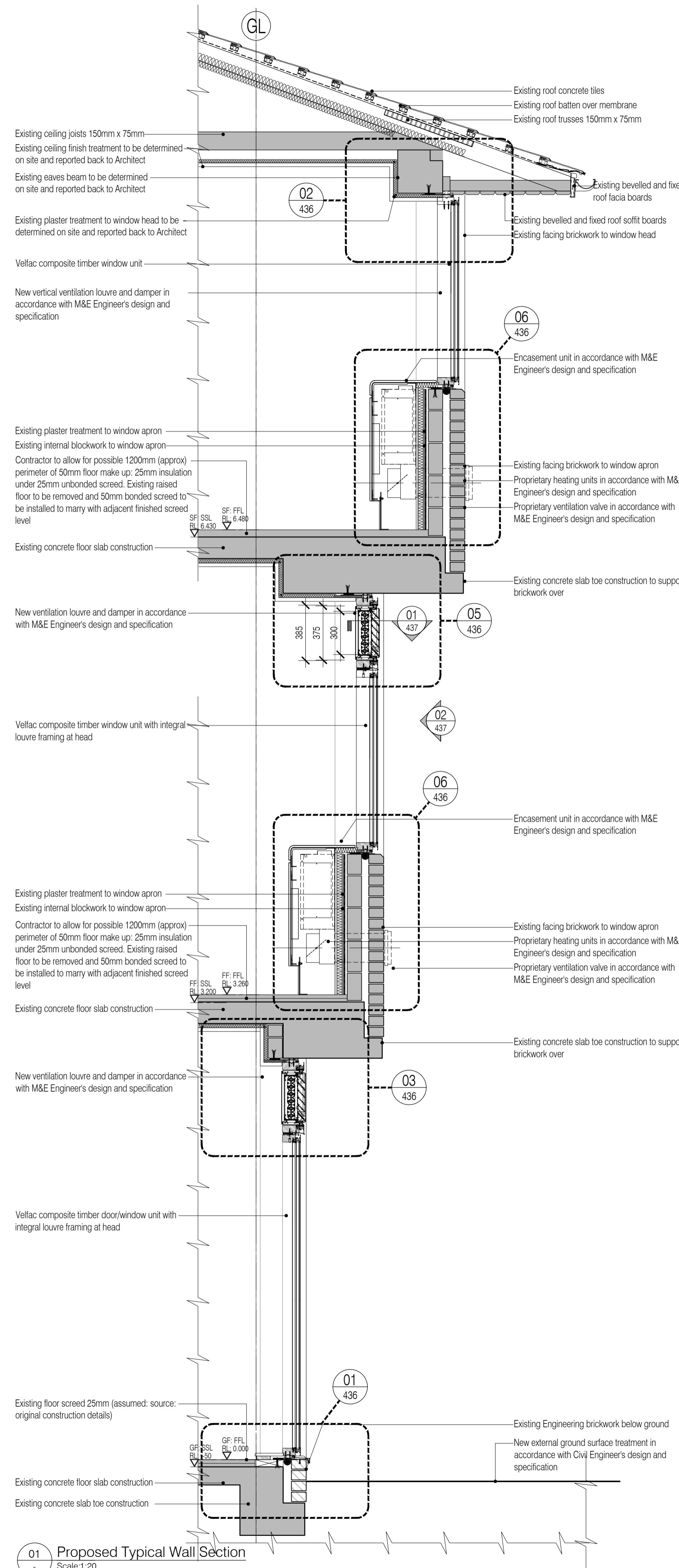


NOTES: Do not scale this drawing. All dimensions to be checked on site prior to commencement or manufacture.

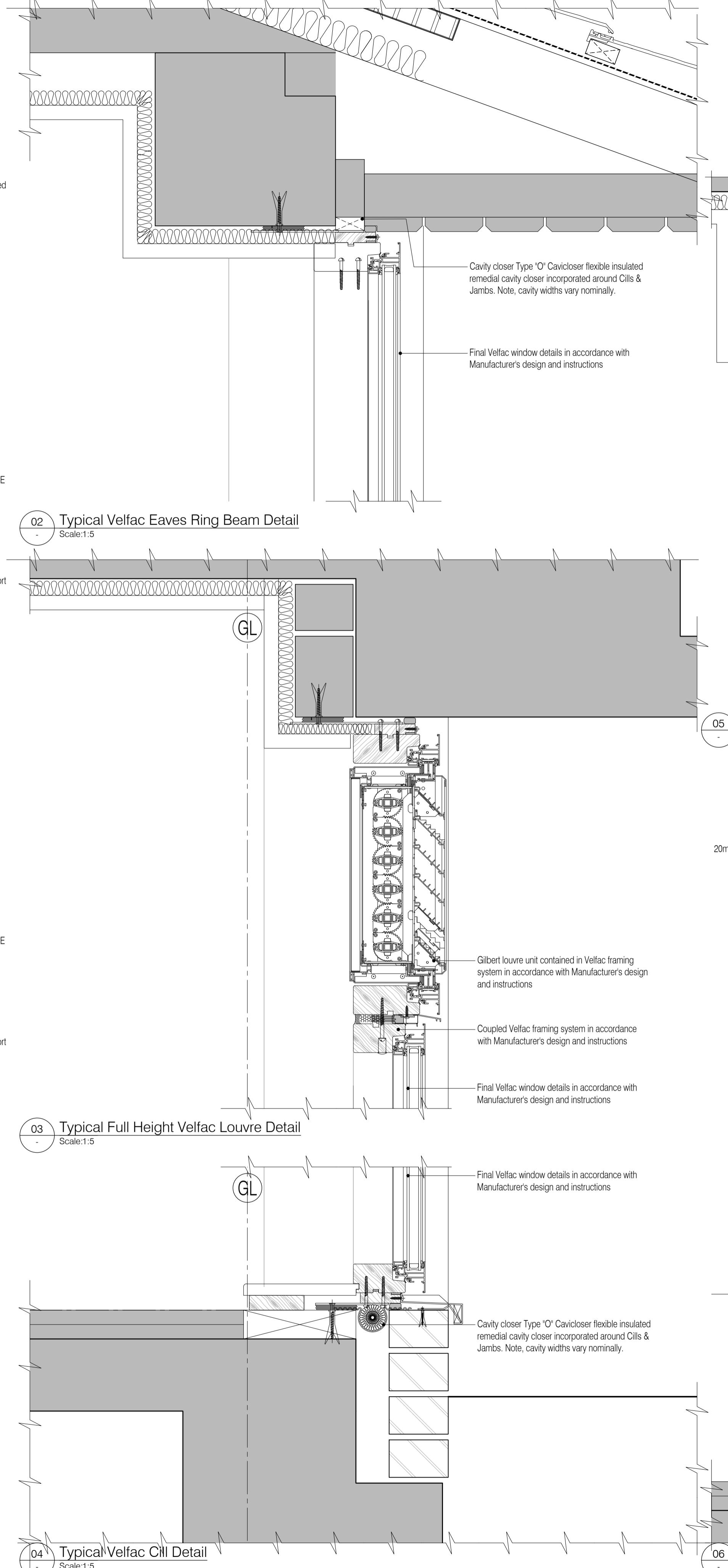


All window details to be in accordance with and finalised by Velfac prior to manufacture and all drawings to be checked on site prior to installation. Architect to be informed on discovery of any discrepancy and work to cease on particular area until resolved with Manufacturer



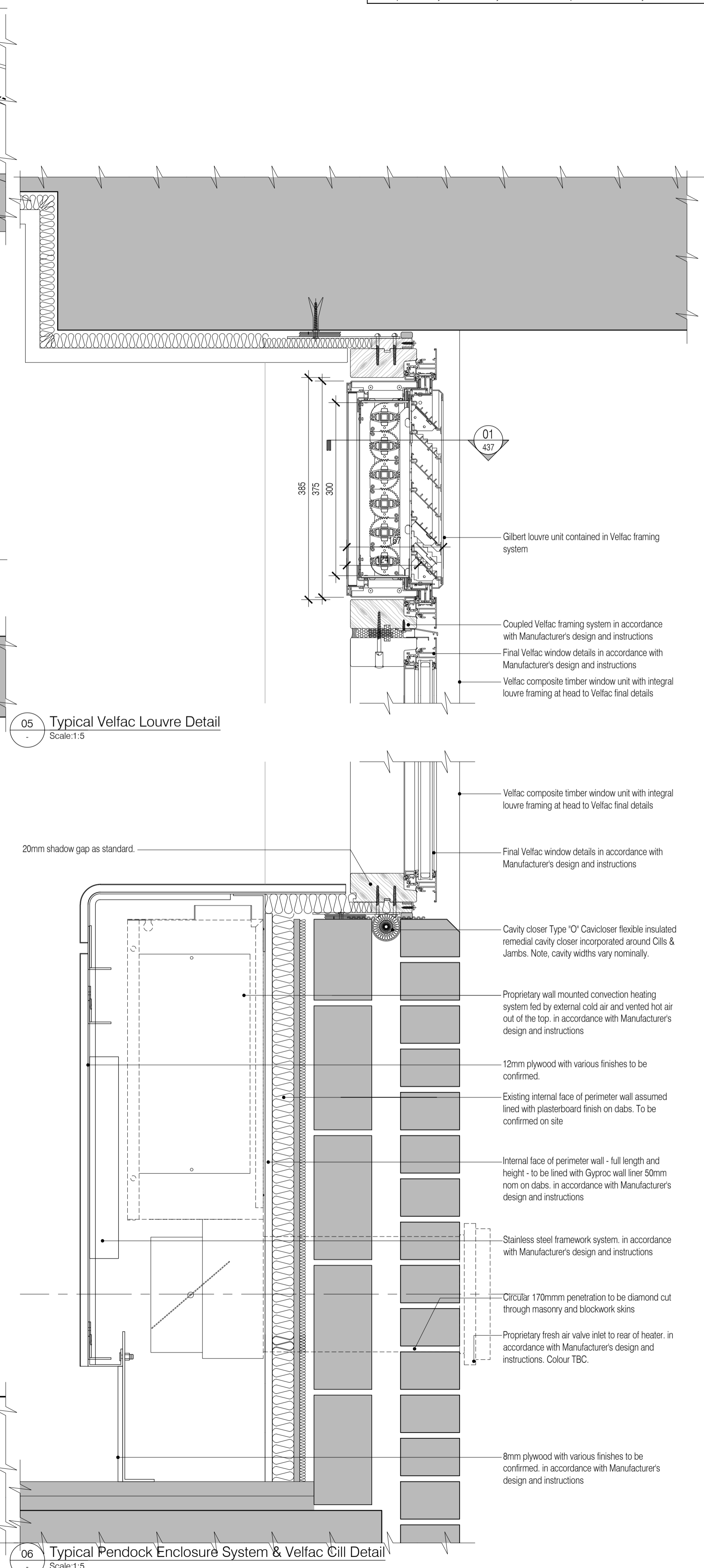
01 Proposed Typical Wall Section
Scale: 1:20

NB: All information based on supplied third party survey information. All discrepancies to be reported to FCG immediately upon discovery.



02 Typical Velfac Eaves Ring Beam Detail
Scale: 1:5

04 Typical Velfac Cill Detail
Scale: 1:5



05 Typical Velfac Louvre Detail
Scale: 1:5

06 Typical Pendock Enclosure System & Velfac Cill Detail
Scale: 1:5

All Mechanical & Electrical and Structural information shown indicative only. Please refer to Mechanical & Electrical and Structural documentation.

ISSUED FOR CONSTRUCTION

NB: - Solid gray hatch denotes existing building fabric.

Rev	Date	By	Chk	Comment
A	16.09.11	RKC	JAS	Status change - Issued for CONSTRUCTION

BRINGING IDEAS TO LIFE

FRANKHAM

Frankham Consultancy Group Limited
21 Perryman Road
Haywards Heath RH16 3TP
t 01444 444900 f 01444 455642
enquire@frankham.com
www.frankham.com

Client
WILLMOTT DIXON CONSTRUCTION

Project Title
Wealden District Council
Hailsham Head Quarters
Refurbishments and Alterations

Drawing Title
Typical Velfac Window & Louvre Frame
Section Details

Drawn by: RKC	Scale: 1:5.20@A1	Date: 08.08.11
Designed by: FCG	Checked by: JAS	Approved by: AC

File Ref.: X:\FRANKHAM\2011\16\WEALDEN\DOORHEAD_400_DETAL_SCHMATIC_071810-A-001.DWG - 20111003	20.06.11 16:24:26
Drawing No. 521185-A-436	Rev. A