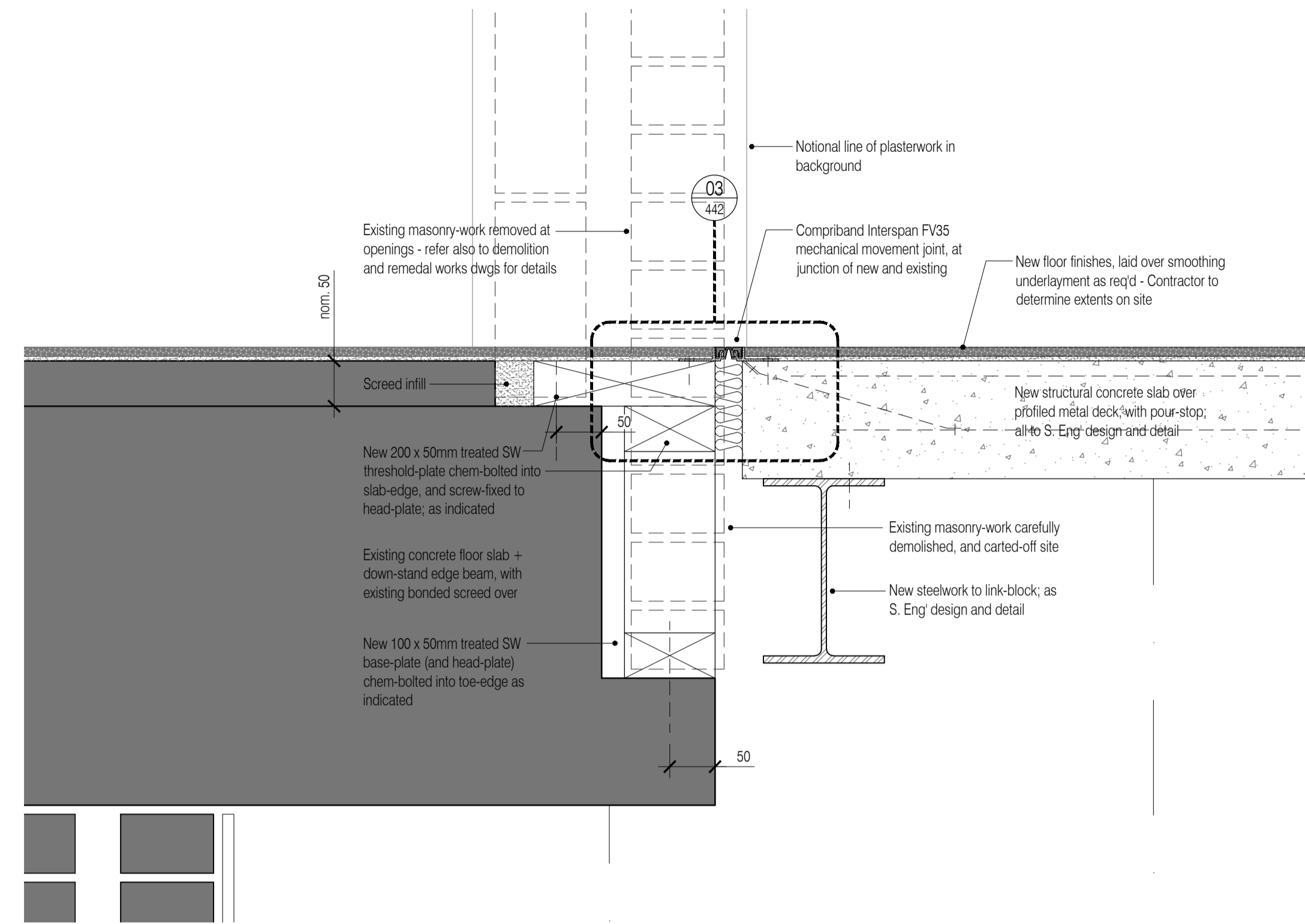
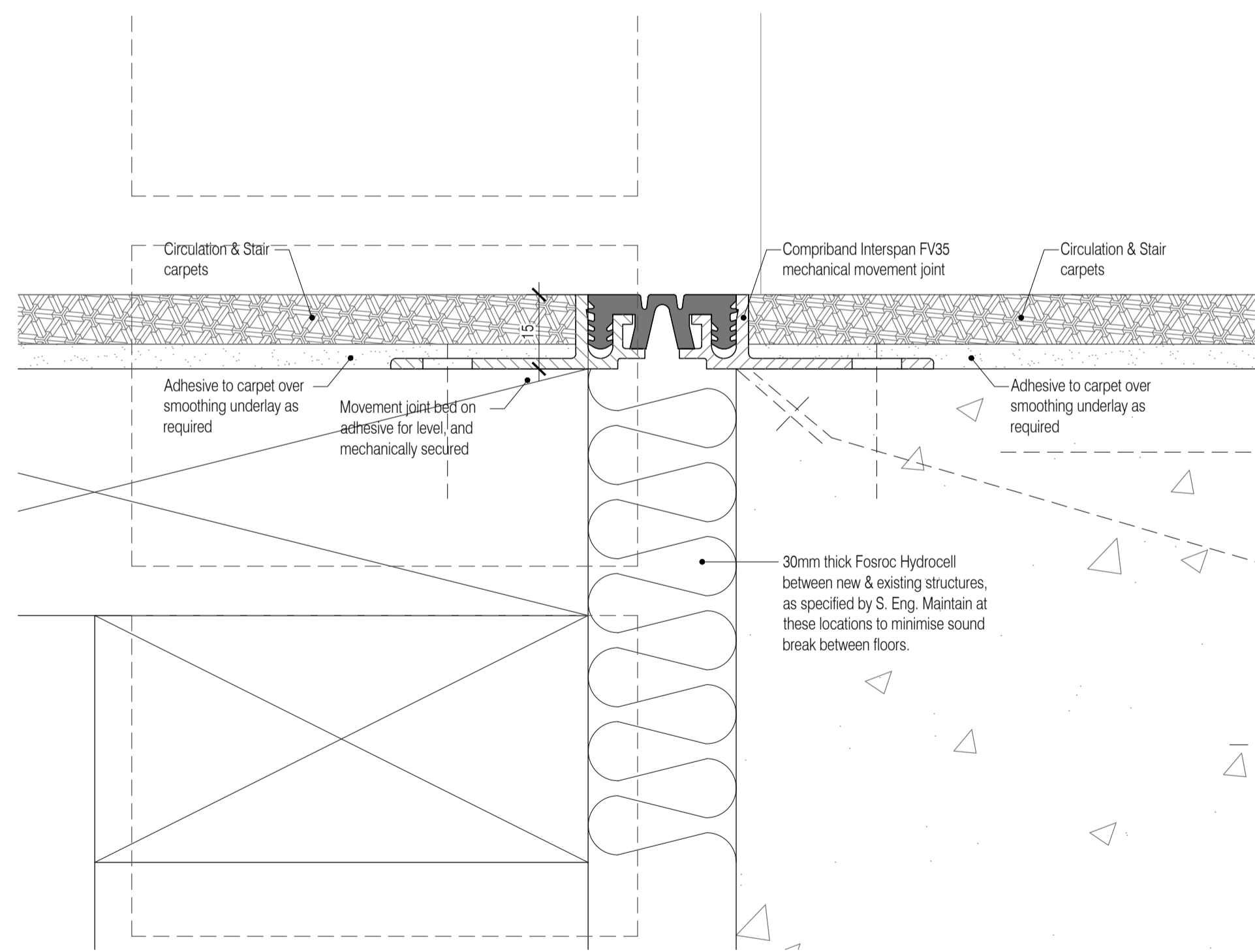


01 General Arrangement Section
Scale: 1:10

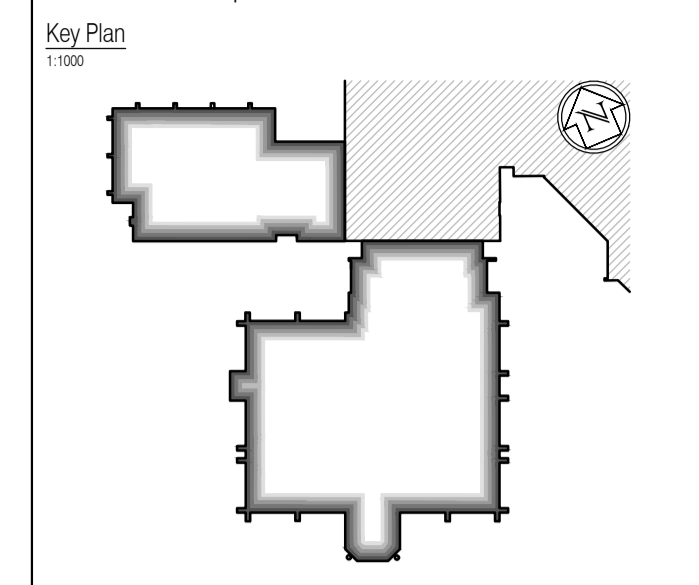


02 Interface Detail
Scale: 1:5



01 Component Detail
Scale: 1:1

NOTES: Do not scale this drawing. All dimensions to be checked on site prior to commencement or manufacture.




Screed depths may vary depending on floor finish and location. Main Contractor to determine screed depth required for each location to accommodate floor finish, underlay, membranes, paints, fixings, etc to maintain finished floor levels.

ISSUED FOR CONSTRUCTION

NB: - Solid gray hatch denotes existing building fabric.

Rev	Date	By	Chk	Comment

BRINGING IDEAS TO LIFE



FRANKHAM

Frankham Consultancy Group Limited
21 Perrymount Road
Haywards Heath RH16 3TP
t 01444 444900 f 01444 455642
enquire@frankham.com
www.frankham.com

Client



WILLMOTT DIXON CONSTRUCTION

Project Title

Wealden District Council
Hailsham Head Quarters
Refurbishments and Alterations

Drawing Title

Floor Finishes
Typical Movement Joint Detail
(Between New & Existing Buildings)

Drawn by: RKC	Scale: Various @A1	Date: 20.01.12
Designed by: FCG	Checked by: RC	Approved by: AC

File Ref.: X:\FRANKHAM\2012\185\HAILSHAM HEAD QUARTERS_400 DETAIL_SCHMATIC_02\185-A-442.DWG - 2001110203	20.06.11 16:25:32
Drawing No. 521185-A-442	Rev.

NB: All information based on supplied third party survey information. All discrepancies to be reported to FCG immediately upon discovery.

All Mechanical & Electrical and Structural information shown indicative only. Please refer to Mechanical & Electrical and Structural documentation.