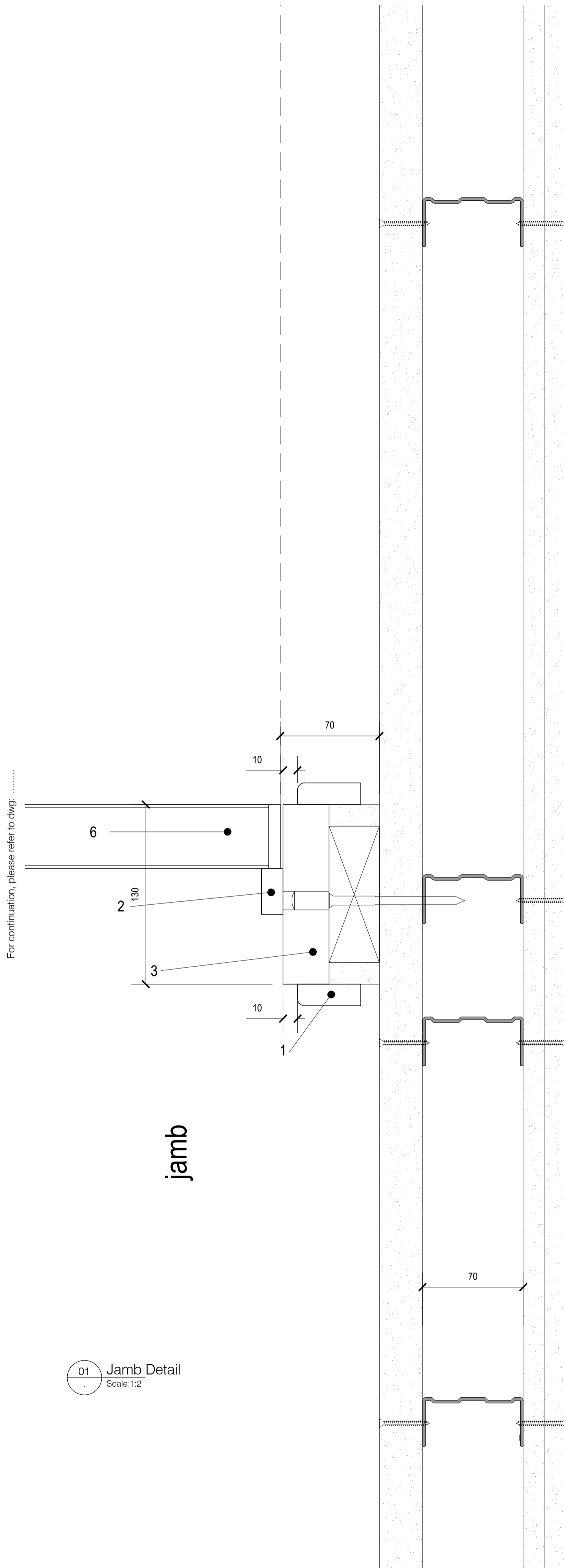


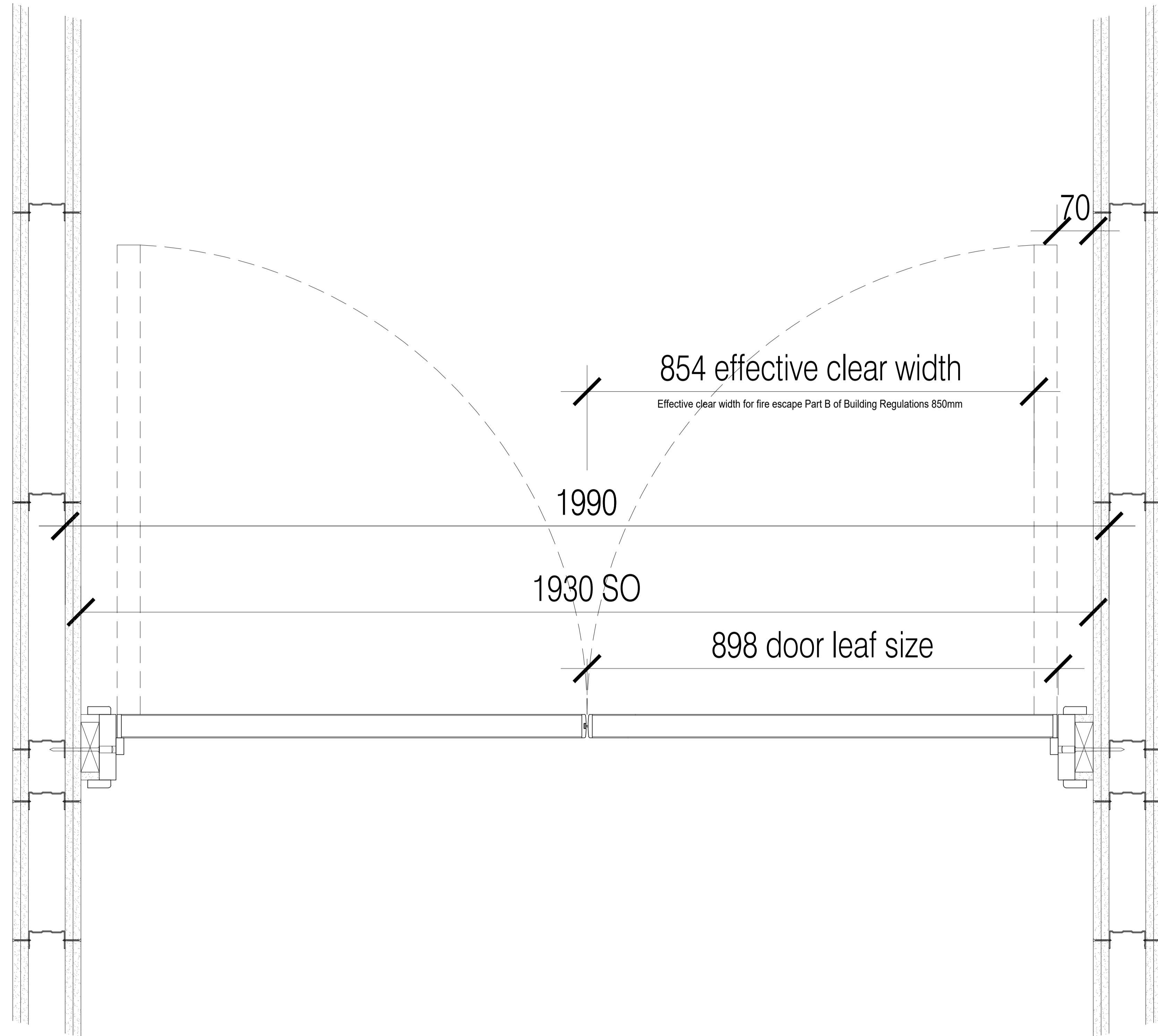
For continuation, please refer to dwg: .....



01 Jamb Detail  
Scale: 1:2

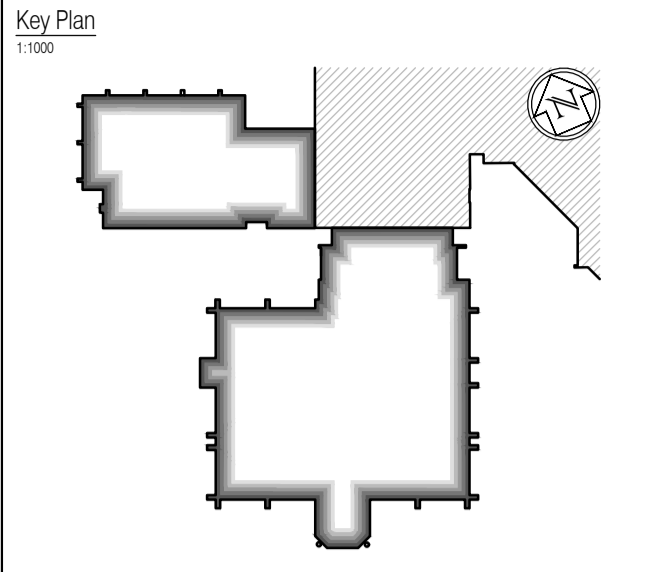
NB: All information based on supplied third party survey information. All discrepancies to be reported to FCG immediately upon discovery.

For continuation, please refer to dwg: .....



01 Plan Detail  
Scale: 1:5

NOTES: Do not scale this drawing. All dimensions to be checked on site prior to commencement or manufacture.



- Notes
- Refer to door schedule 521185-A-620.
  - Refer to door elevations drawing 521185-A-630.
  - Refer to NBS specification L20/L40.
  - Refer to fire seal/acoustic seal details drawing 521185-A-450.
  - Refer to drawings 521185-A-416 & 417 for new Velfac door details in existing openings.
  - Refer to drawings 521185-A-410 to 414 for external timber doors, cedar clad, details.
  - Refer to drawings 521185-A-410 to 412 and 414 Kaba sliding entrance door details, link block ground floor.
  - Refer to drawings 521185-A-418 and 419 Kaba internal sliding door details, link block ground floor.
  - Refer to drawing 521185-A-434 external metal door, second floor link block.

**ISSUED FOR CONSTRUCTION**

NB: - Solid gray hatch denotes existing building fabric.

Rev	Date	By	Chk	Comment
A	16.09.11	RKC	JAS	Status change - Issued for CONSTRUCTION

**BRINGING IDEAS TO LIFE**

**FRANKHAM**

Frankham Consultancy Group Limited  
21 Parnmount Road  
Haywards Heath RH16 3TP  
t 01444 444900 f 01444 455642  
enquire@frankham.com  
www.frankham.com

Client

**WILLMOTT DIXON CONSTRUCTION**

Project Title

Wealden District Council  
Hailsham Head Quarters  
Refurbishments and Alterations

Drawing Title

Door details  
Recessed double doors

Drawn by: RKC	Scale: 1:2 & 1:5 @A1	Date: 10.06.11
Designed by: FCG	Checked by: JAS	Approved by: AC

File Ref.: X:\FRANKHAM\CG\218\WALDEN\DOOR\453_460_DETAL_SCHMATIC\521185-A-453.DWG - 3/28/11/10:04	20.06.11:16:25:44
Drawing No. <b>521185-A-453</b>	Rev. <b>A</b>