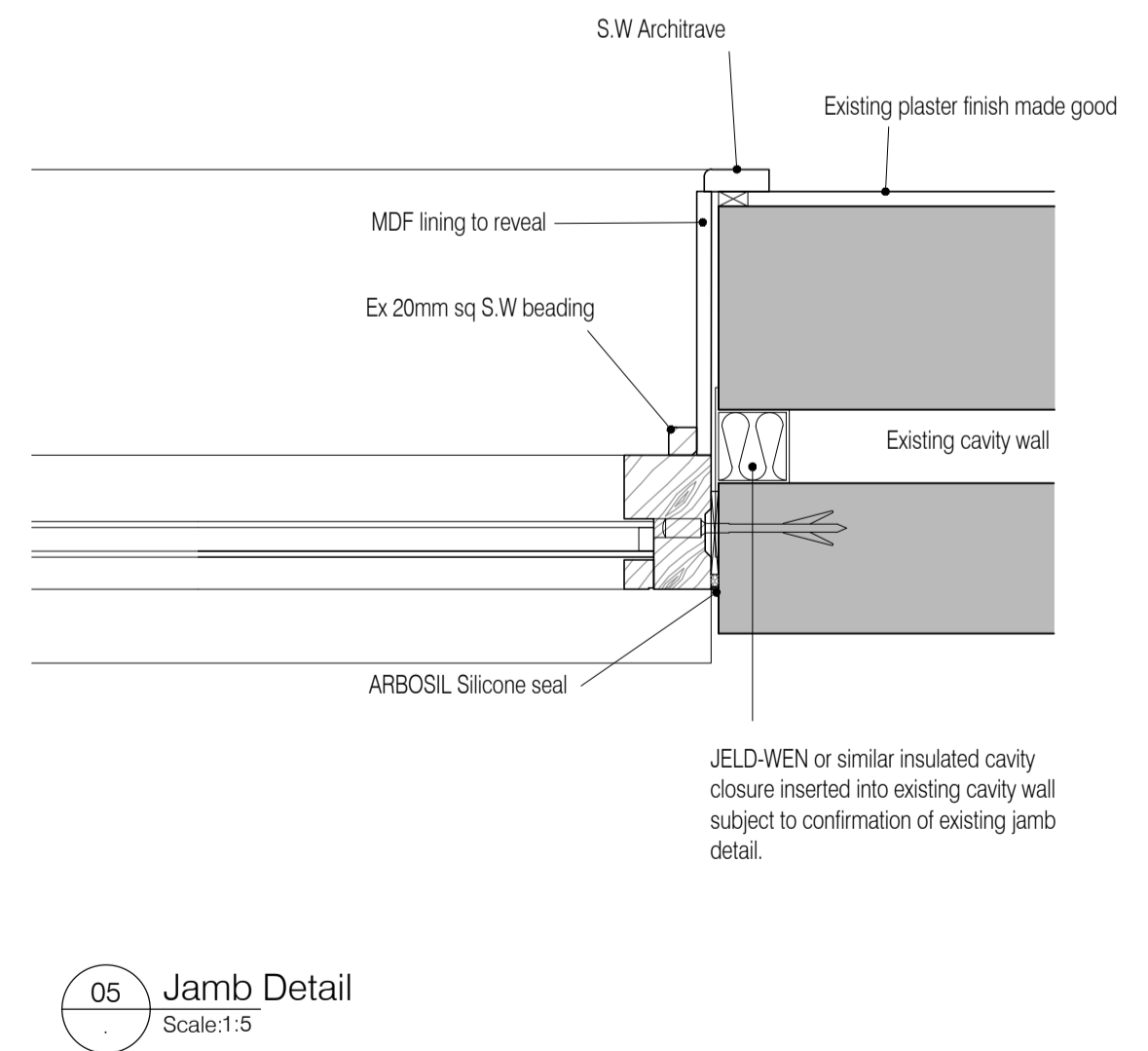
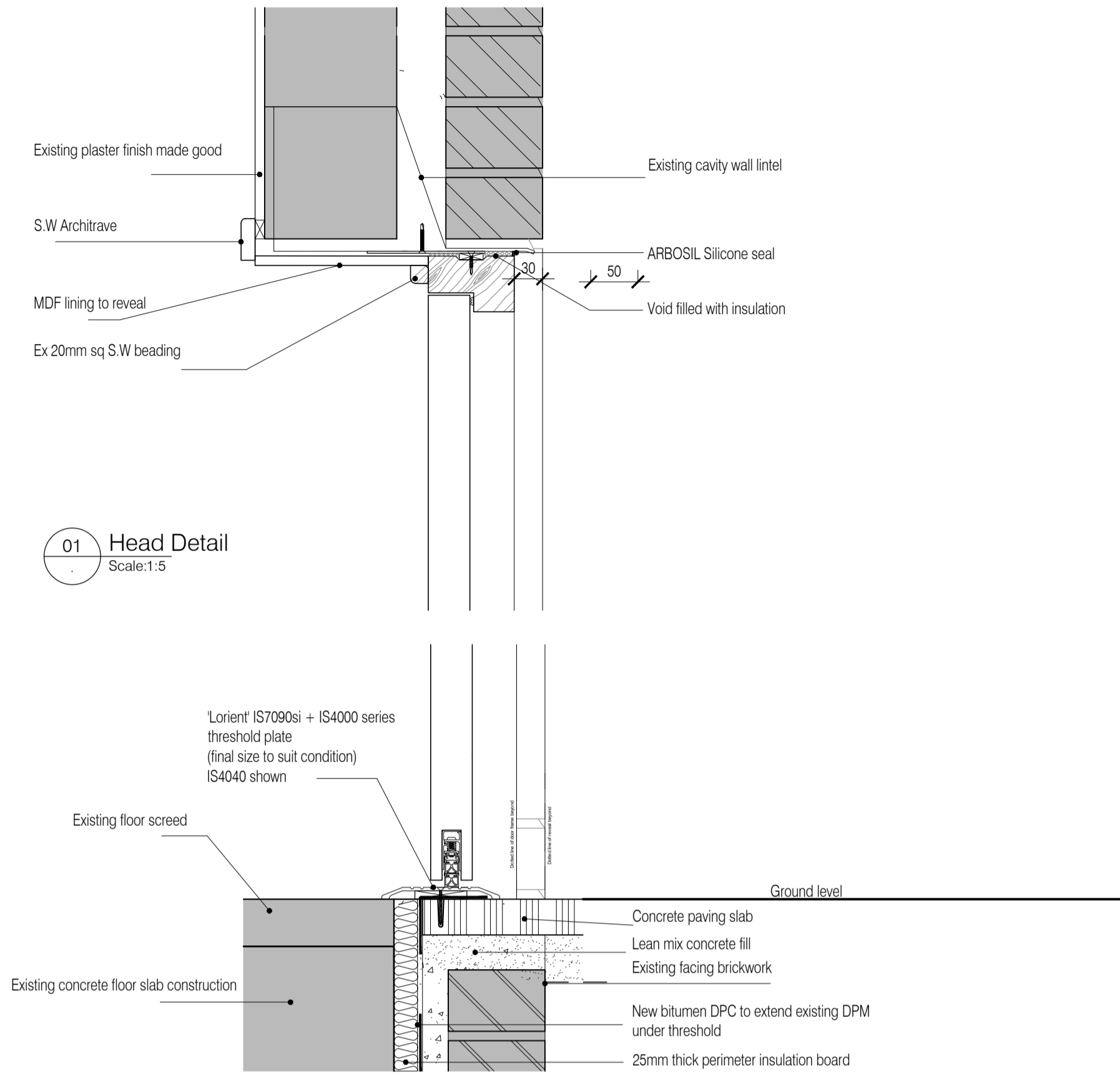
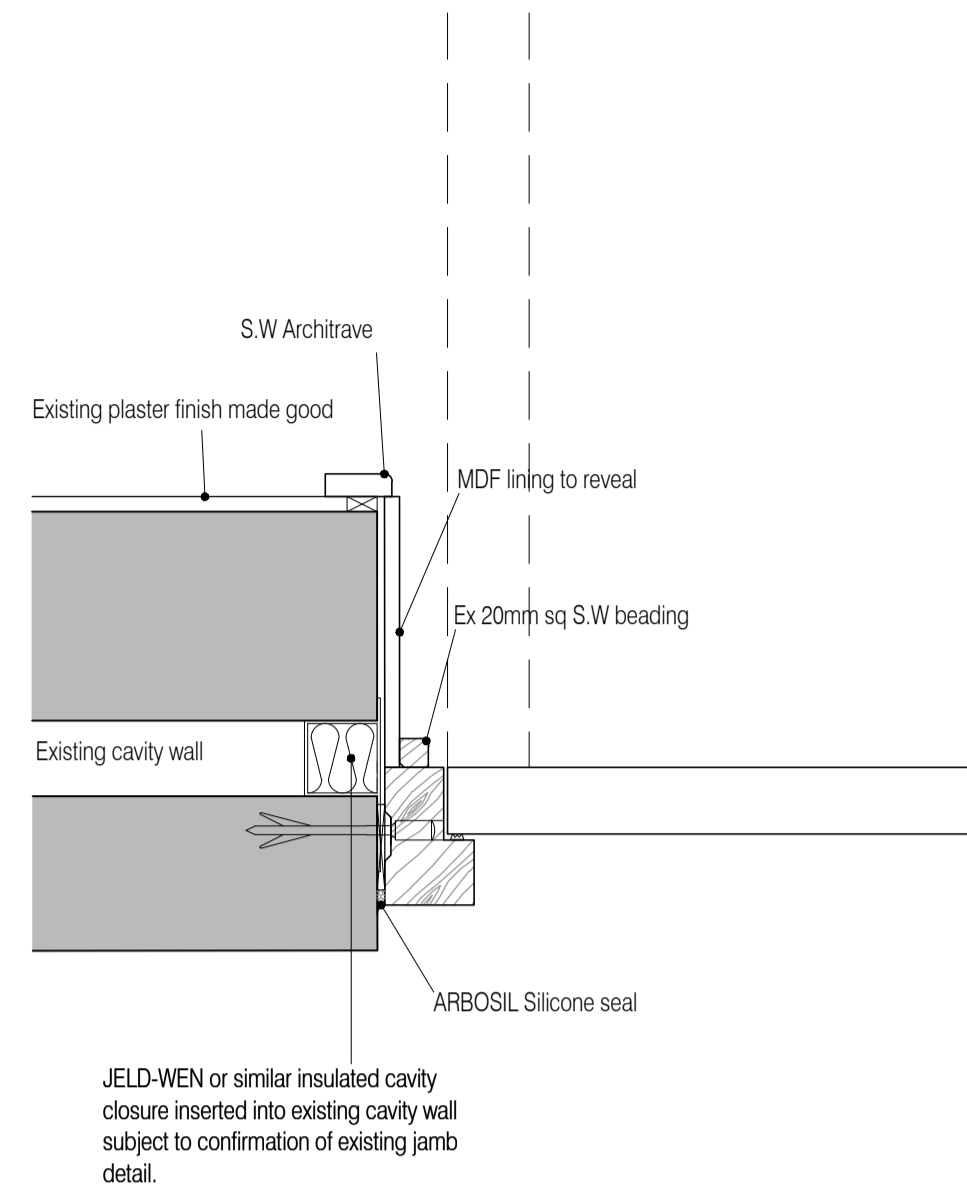


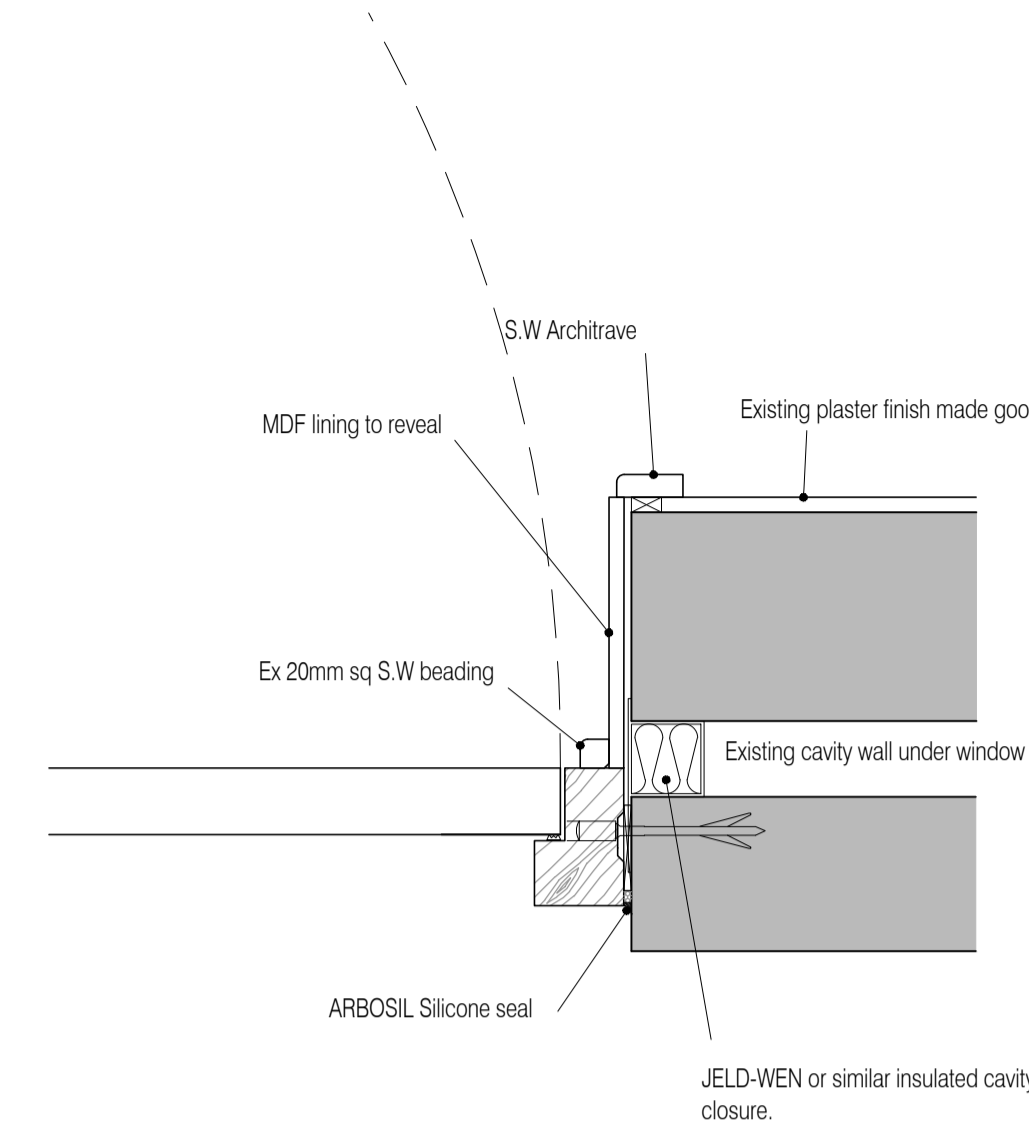
For continuation, please refer to dwg: .....



JELD-WEN or similar insulated cavity closure inserted into existing cavity wall subject to confirmation of existing jamb detail.

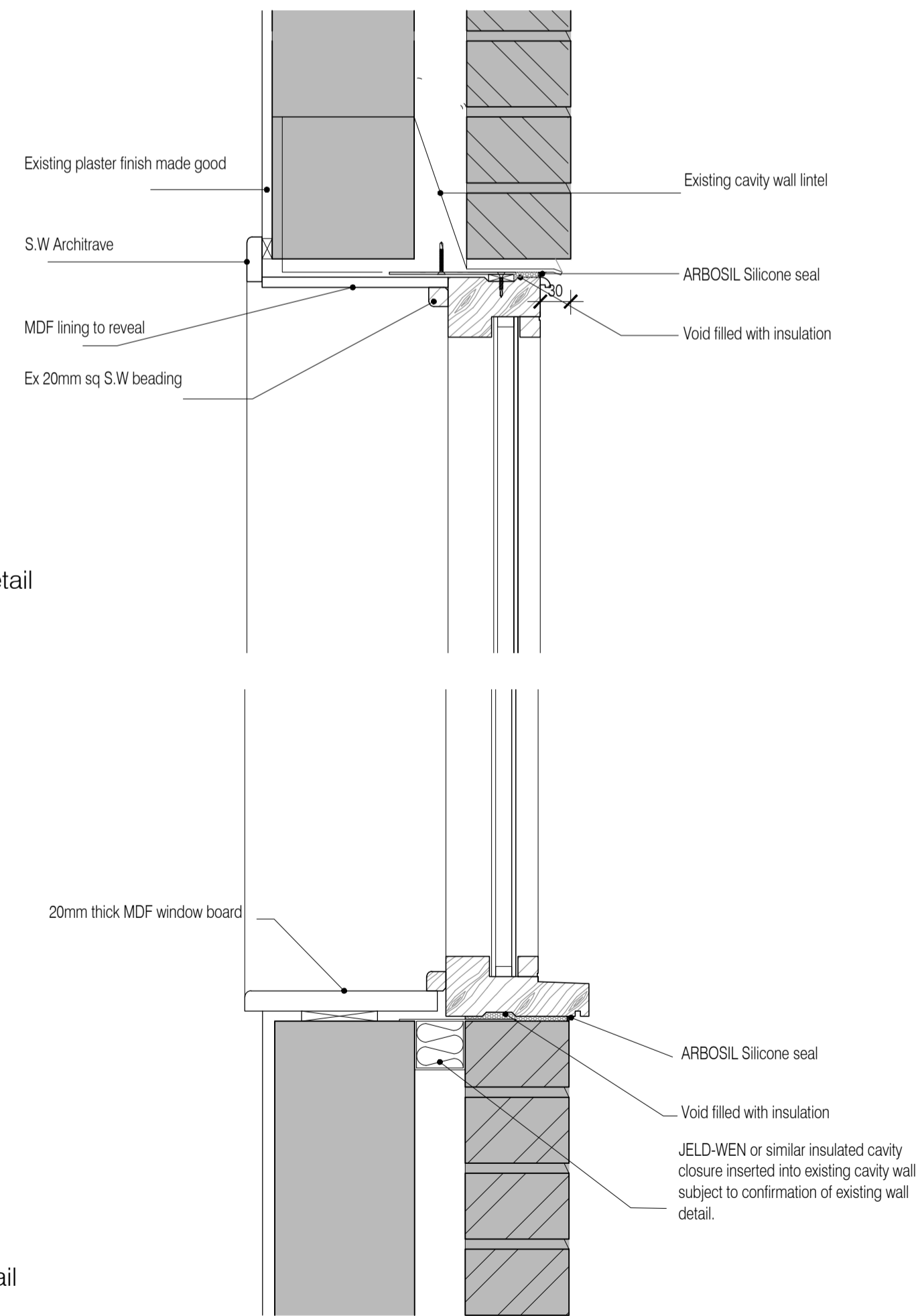


JELD-WEN or similar insulated cavity closure inserted into existing cavity wall subject to confirmation of existing jamb detail.

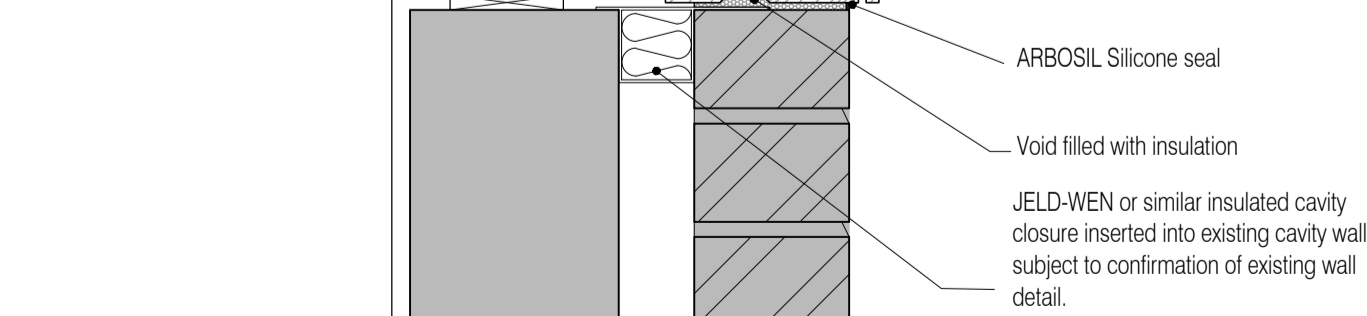


JELD-WEN or similar insulated cavity closure.

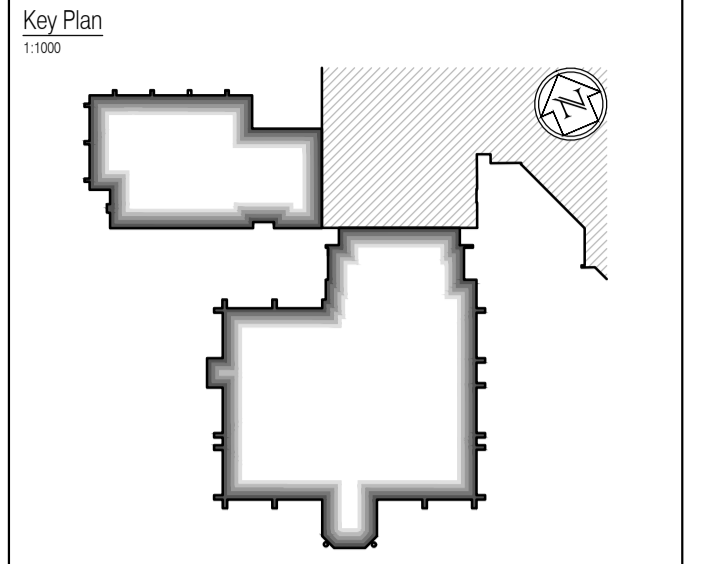
06 Head Detail Scale:1:5



07 Cill Detail Scale:1:5



NOTES: Do not scale this drawing. All dimensions to be checked on site prior to commencement or manufacture.



ISSUED FOR CONSTRUCTION

NB: - Solid gray hatch denotes existing building fabric.

Rev	Date	By	Chk	Comment
A	16.09.11	RKC	JAS	Status change - Issued for CONSTRUCTION

BRINGING IDEAS TO LIFE

**FRANKHAM**

Frankham Consultancy Group Limited  
21 Perryman Road  
Haywards Heath RH16 3TP  
t 01444 444900 f 01444 455642  
enquire@frankham.com  
www.frankham.com

Client  
**WILLMOTT DIXON CONSTRUCTION**

Project Title  
Wealden District Council  
Hailsham Head Quarters  
Refurbishments and Alterations

Drawing Title  
Details  
Fire escape door and sidelight  
Leisure centre

Drawn by: RKC	Scale: 1:5@A1	Date: 21.06.11
Designed by: FCG	Checked by: JAS	Approved by: AC

File Ref.: X:\FRANKHAM\021185\HAILSHAM HEAD QUARTERS\46 DETAIL\_SCHMATIC\021185-A-454.DWG - 20061116.25.49

Drawing No. <b>521185-A-454</b>	Rev. <b>A</b>
------------------------------------	------------------

For continuation, please refer to dwg: .....

For continuation, please refer to dwg: .....

NB: All information based on supplied third party survey information. All discrepancies to be reported to FCG immediately upon discovery.

For continuation, please refer to dwg: .....