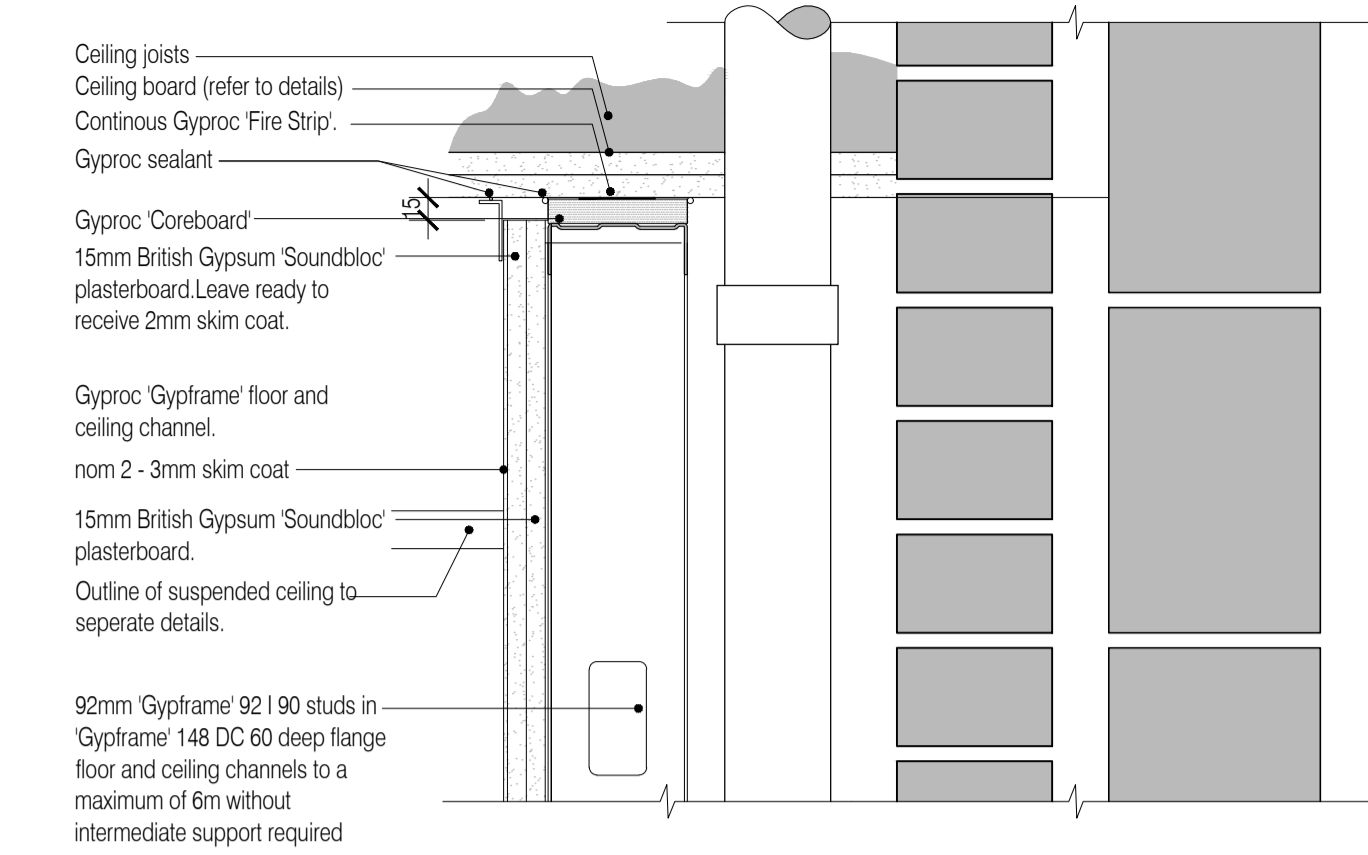


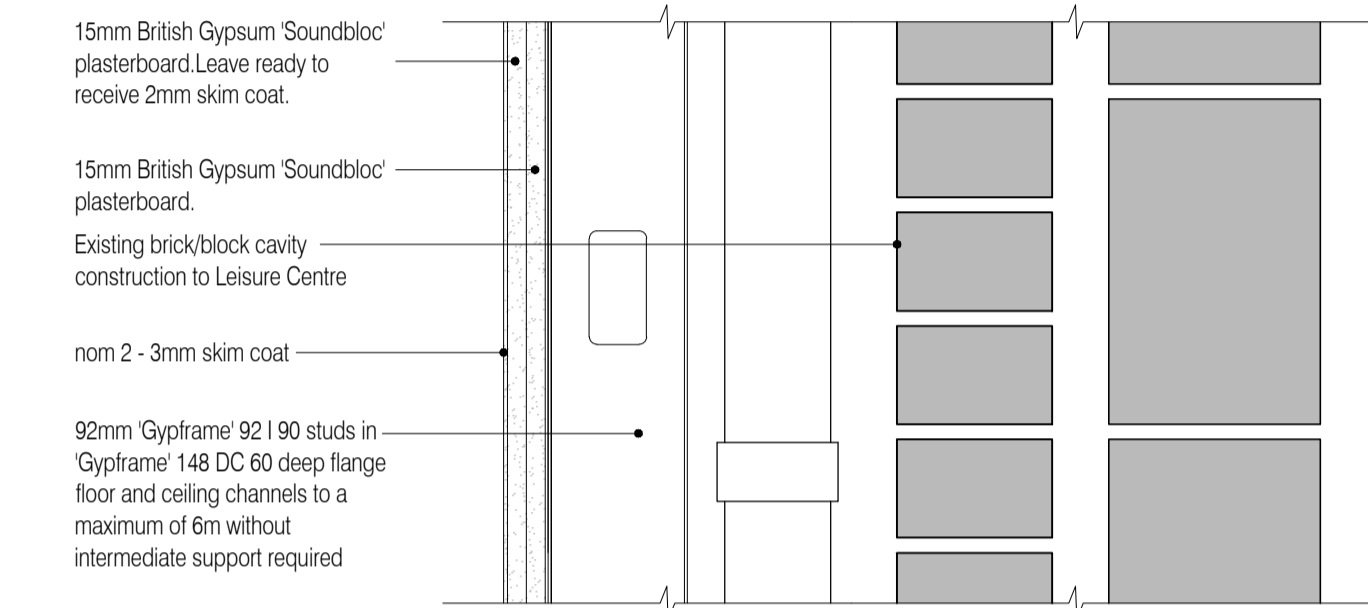
All partition information, details and specifications subject to confirmation by Drywall Contractor and are to be in accordance with Manufacturers design and instructions. Architect to be notified immediately upon discovery of variation to the details shown.

These drawings have been edited in accordance with Willmott Dixon's instructions. All material, product, volume, dimension and performance information is indicative only. FCG repudiate any and all liability for failure or non performance of any of the above mentioned items as indicated on this or any other FCG documentation.

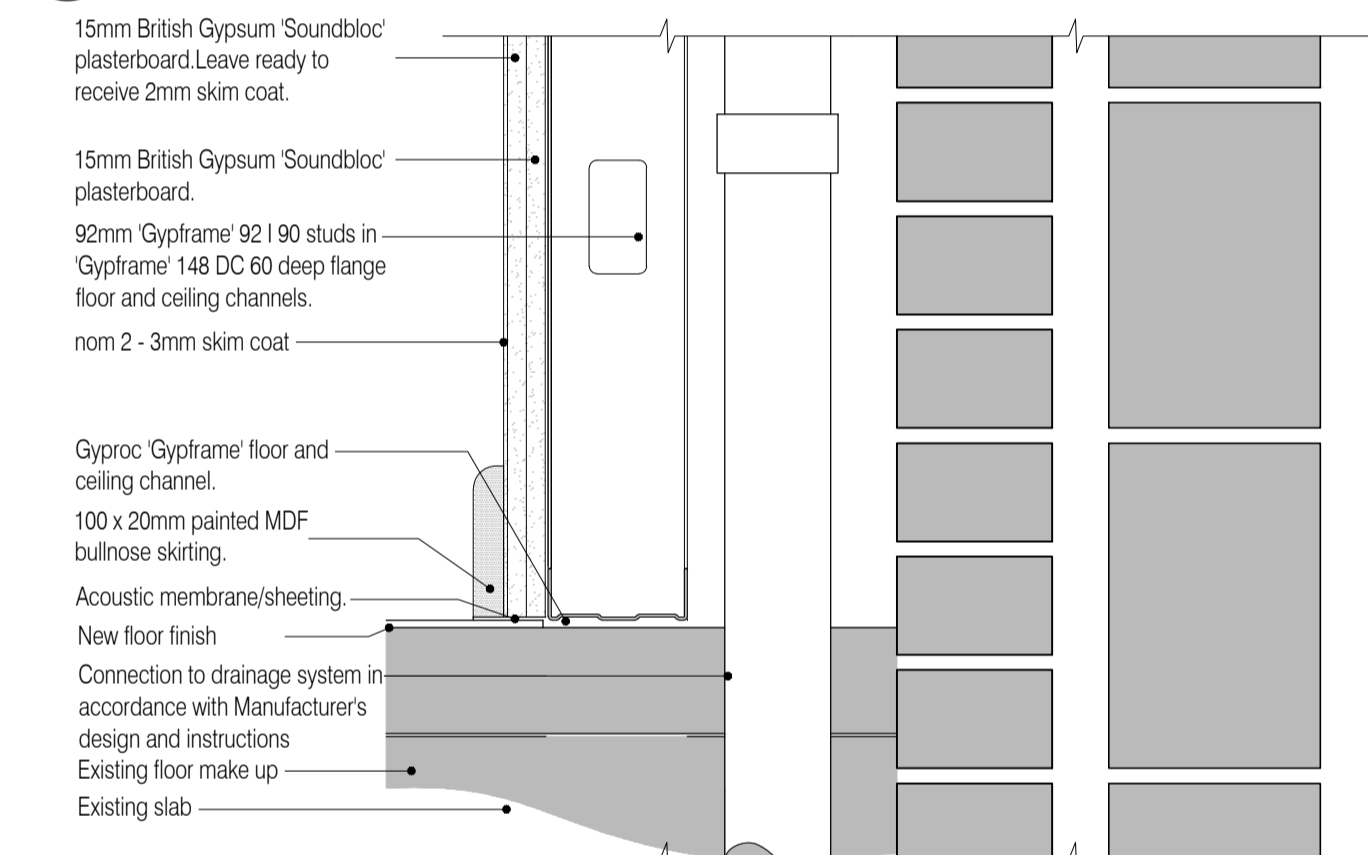
NOTES: Do not scale this drawing. All dimensions to be checked on site prior to commencement or manufacture.



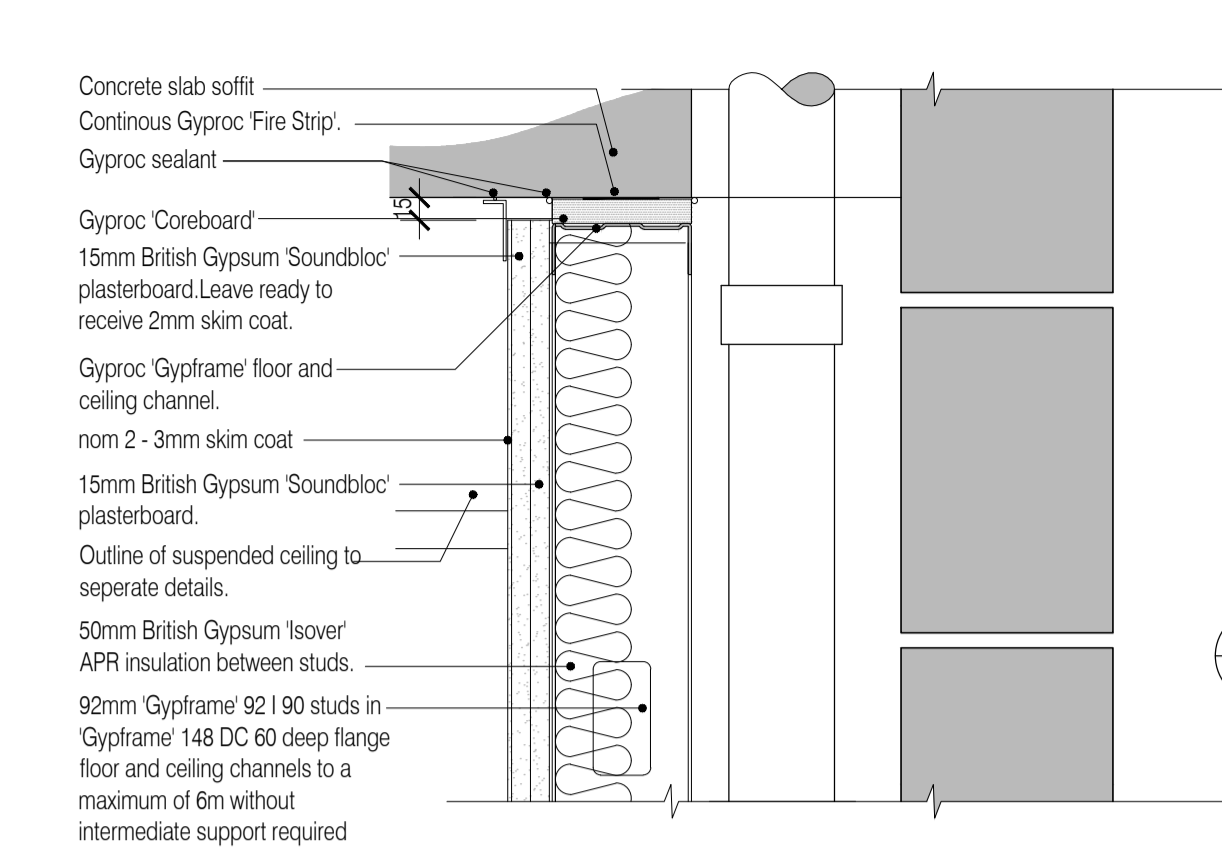
01 Head of Uninsulated IWL 90I92 Independant Stud Wall Adjacent to Leisure Centre  
Scale: 1:5



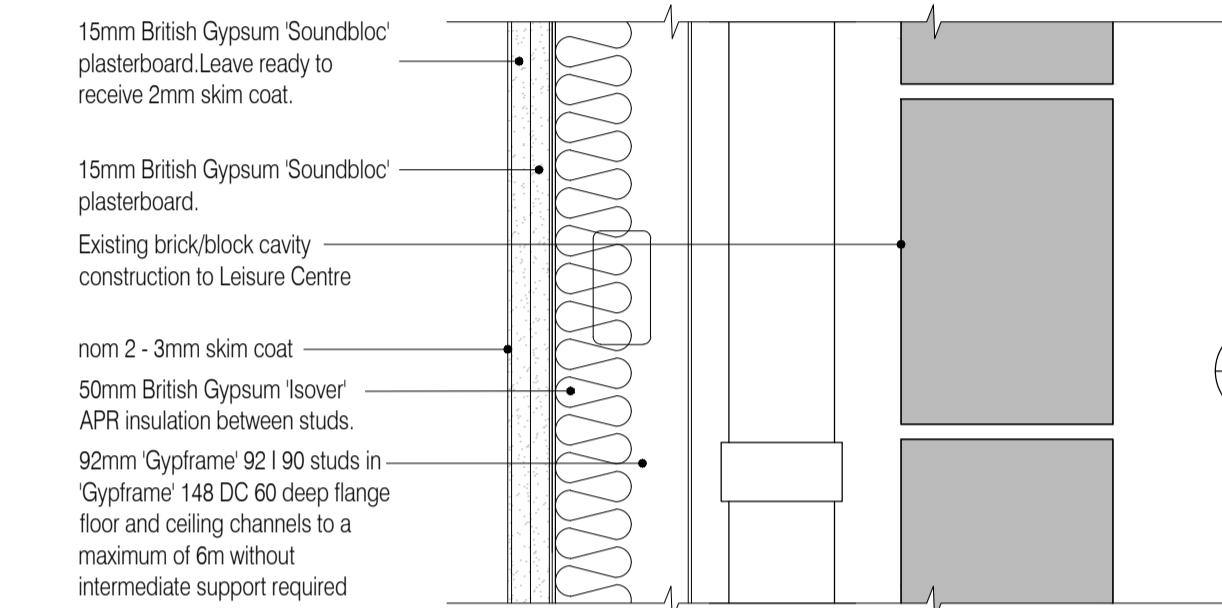
02 Middle of Uninsulated IWL 90I92 Independant Stud Wall Adjacent to Leisure Centre  
Scale: 1:5



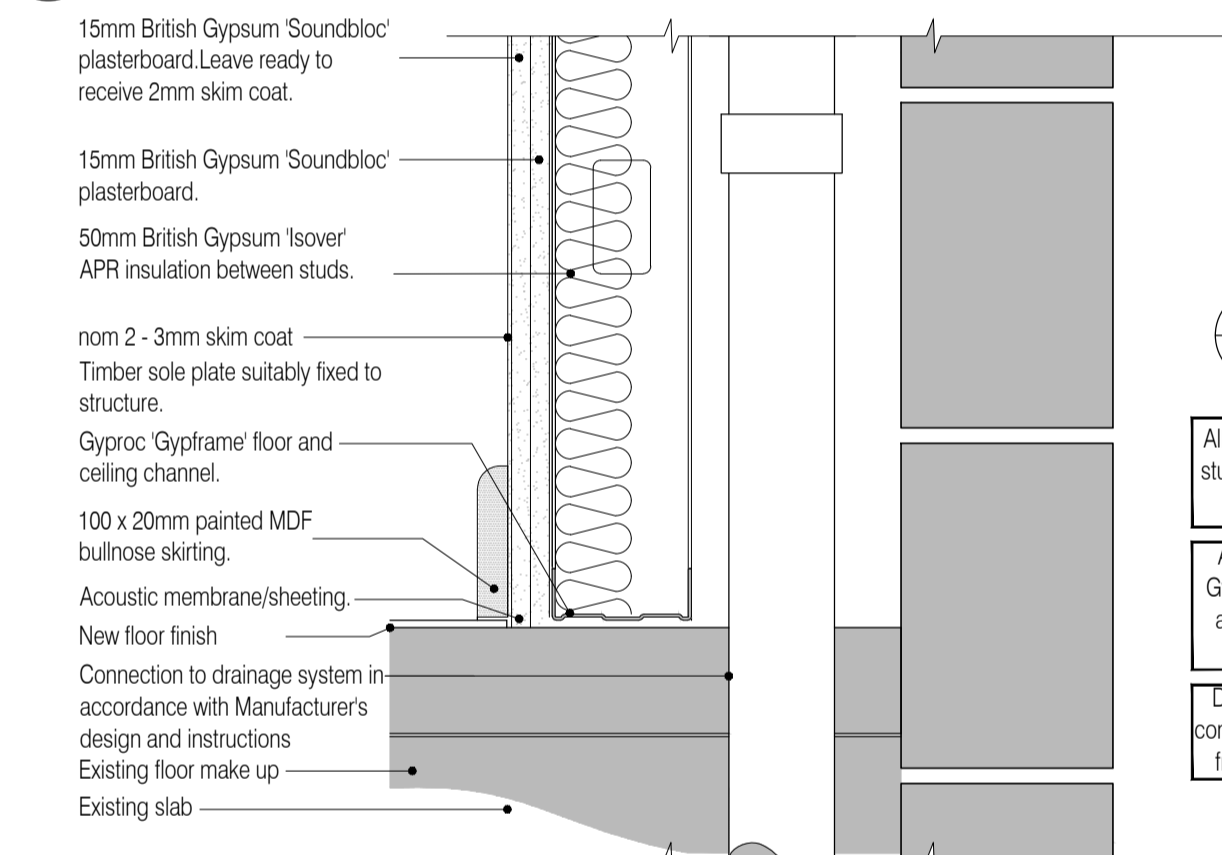
03 Foot of Uninsulated IWL 90I92 Independant Stud Wall adjacent to Toilets  
Scale: 1:5



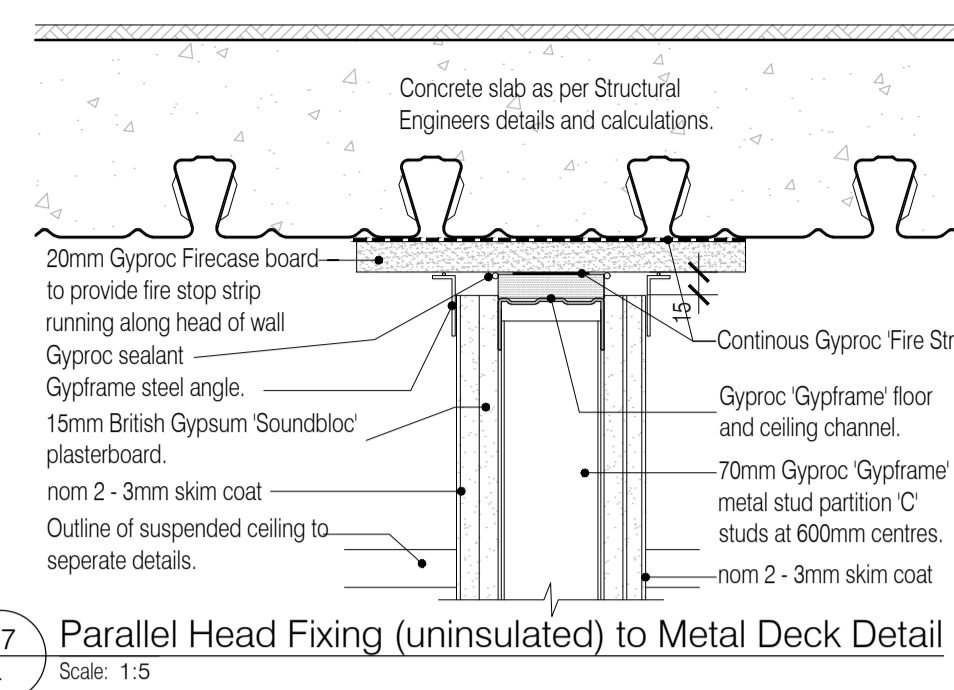
04 Head of Insulated IWL 90I92 Independant Stud Wall adjacent to Toilets  
Scale: 1:5



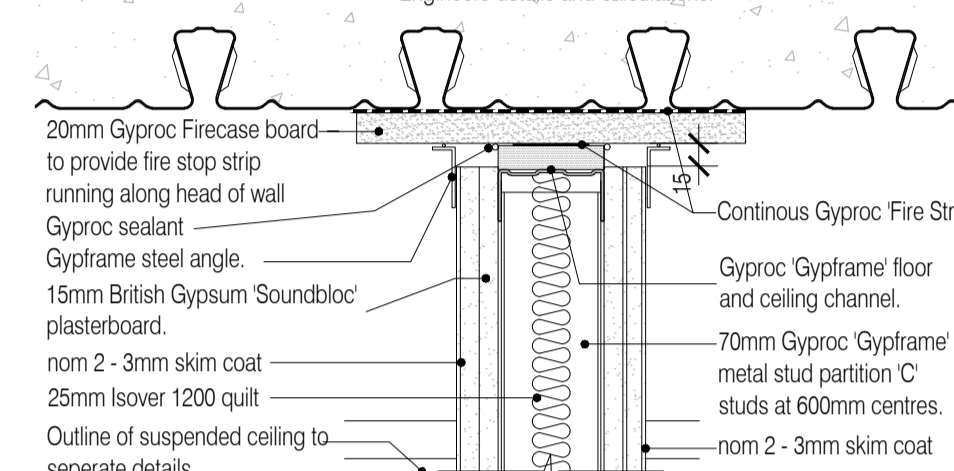
05 Middle of Insulated IWL 90I92 Independant Stud Wall adjacent to Toilets  
Scale: 1:5



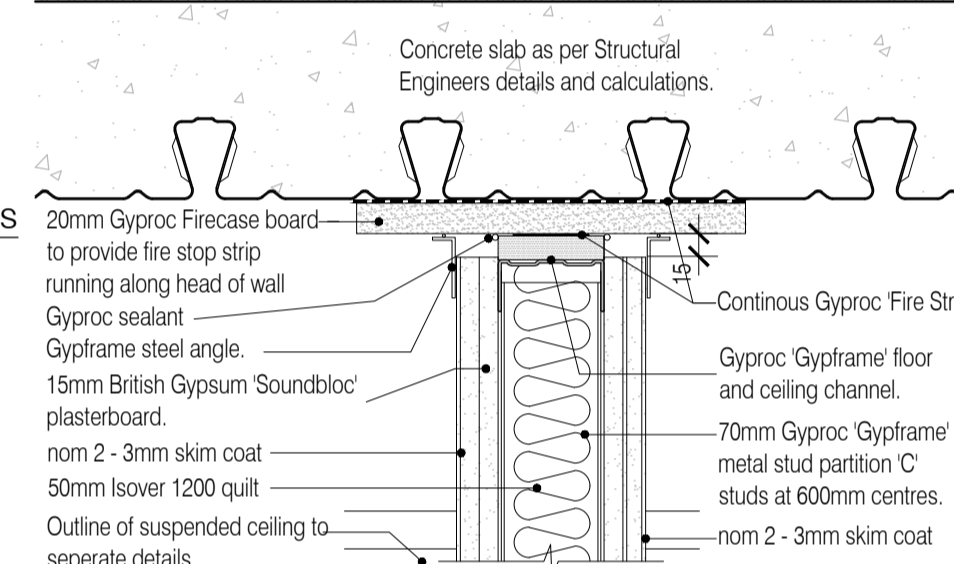
06 Foot of Insulated IWL 90I92 Independant Stud Wall adjacent to Toilets  
Scale: 1:5



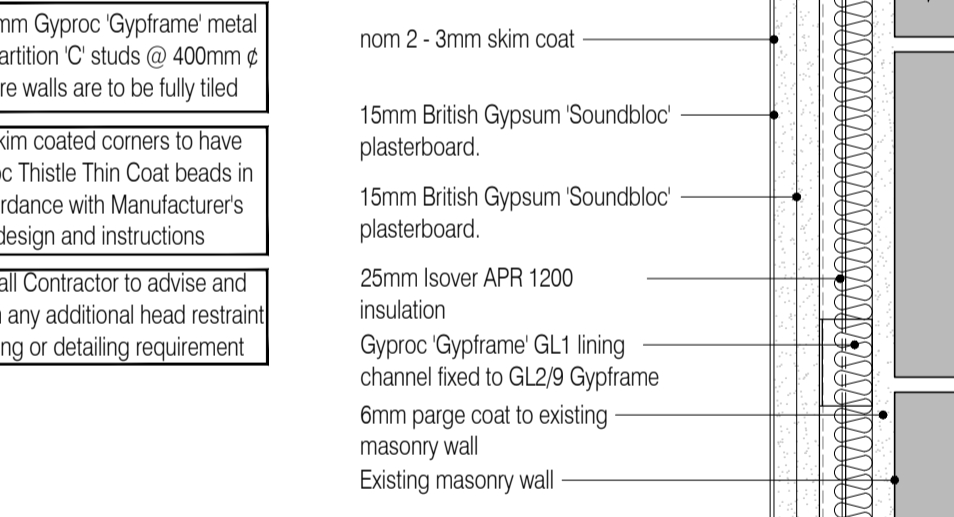
07 Parallel Head Fixing (uninsulated) to Metal Deck Detail  
Scale: 1:5



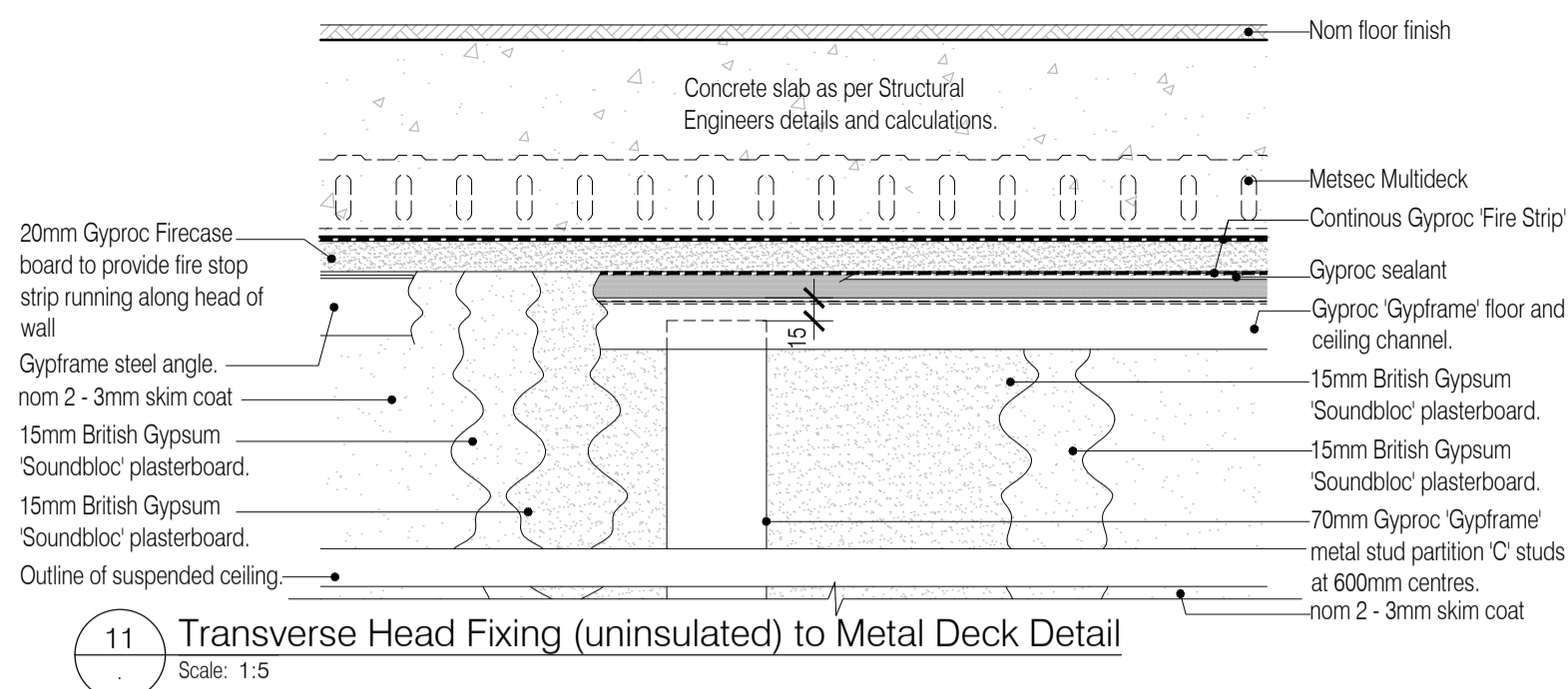
08 Parallel Head Fixing (25mm insulation) to Metal Deck Detail  
Scale: 1:5



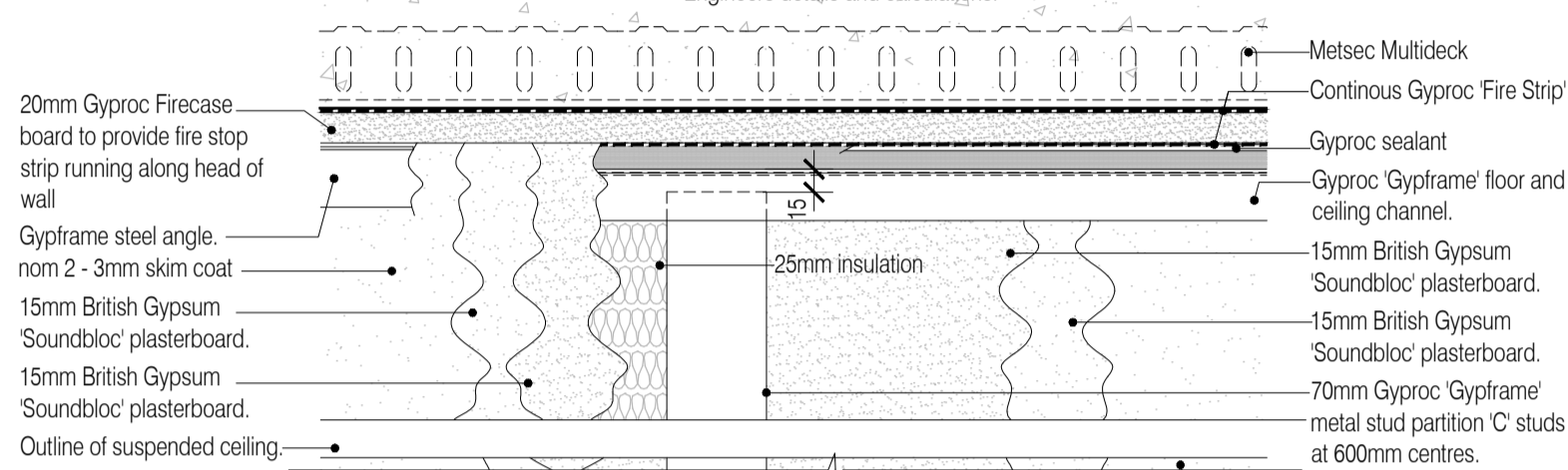
09 Parallel Head Fixing (50mm insulation) to Metal Deck Detail  
Scale: 1:5



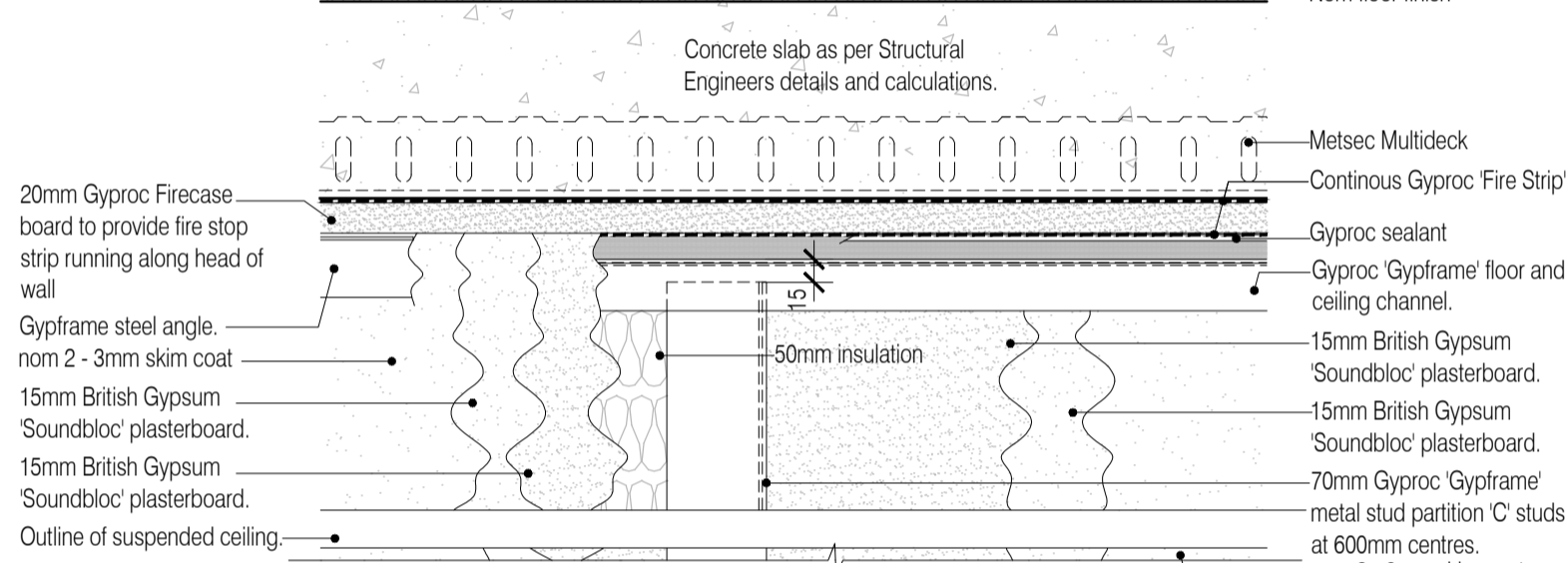
10 Plant Room Wall Section Detail  
Scale: 1:5



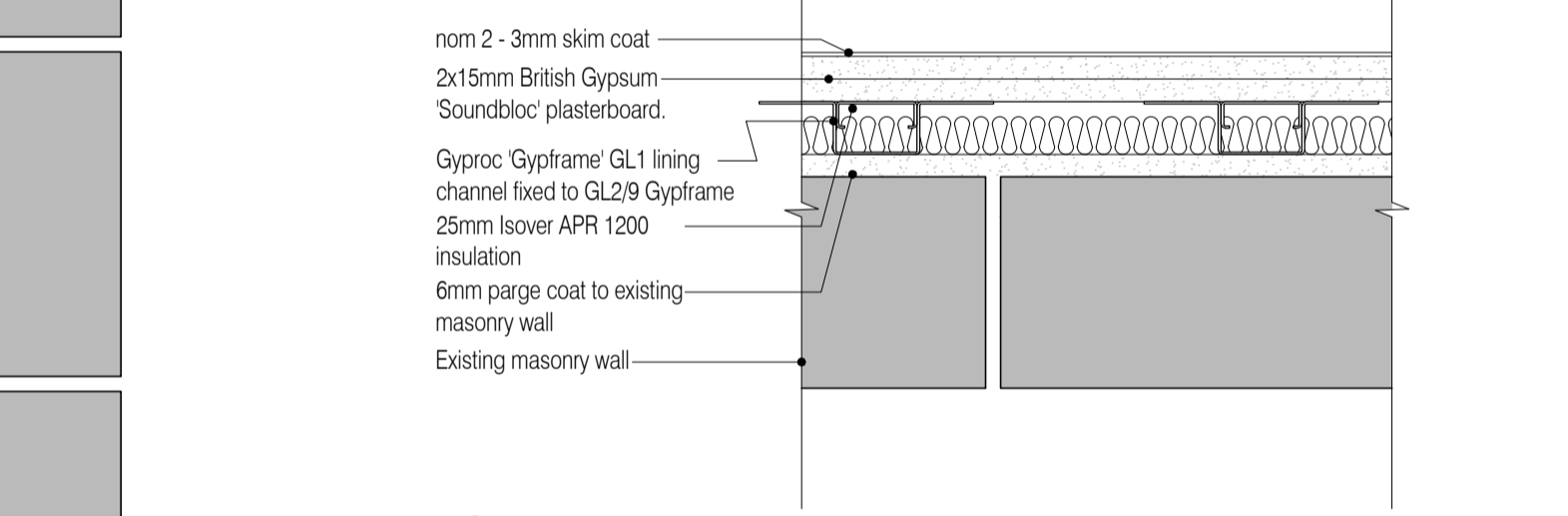
11 Transverse Head Fixing (uninsulated) to Metal Deck Detail  
Scale: 1:5



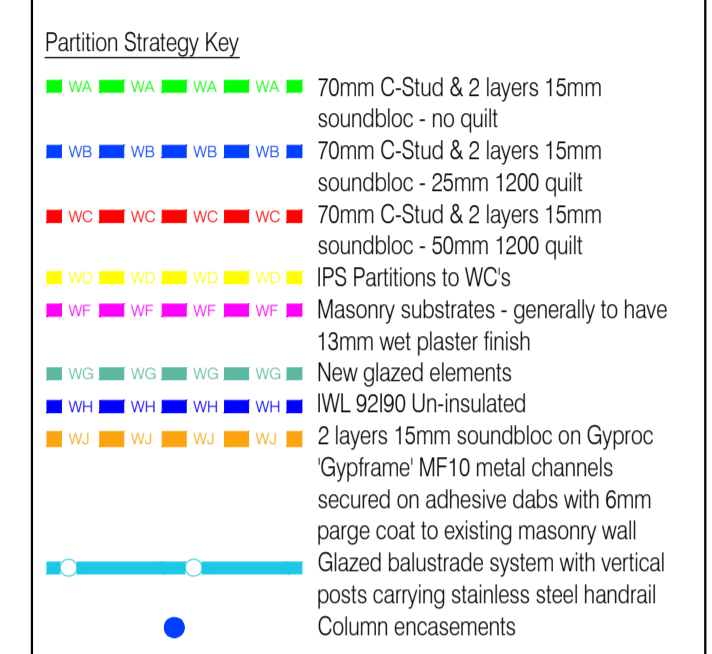
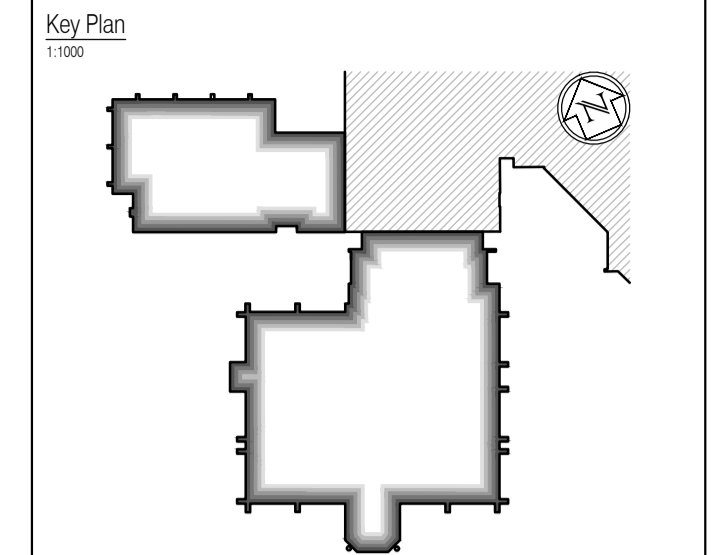
12 Transverse Head Fixing (25mm insulation) to Metal Deck Detail  
Scale: 1:5



13 Transverse Head Fixing (50mm insulated) to Metal Deck Detail  
Scale: 1:5



14 Plant Room Wall Plan Detail  
Scale: 1:5



Note  
All existing external walls dry-lined using thermal board.  
All existing fair-faced internal blockwork partition walls to be dry-lined.  
Refer also to the following FCG drawings:  
For 'GA Plans', refer to drawings 'A-100-Series'.  
For 'GA Sections', refer to drawings 'A-200-Series'.  
For 'GA Elevations', refer to drawings 'A-300-Series'.  
For 'Acoustic Strategy', refer to drawings 'A-150-Series'.  
For 'Internal Fire Strategy', refer to drawings 'A-160-Series'.  
For 'Builders Work', refer to drawings 'A-180-Series'.  
Refer also to detailed drawings generally - 'A-400-Series' + NBS.

All 70mm Gyproc Gyprafe metal stud partition C studs @ 400mm c where walls are to be fully tiled  
All skim coated corners to have Gyproc Thistle Thin Coat beads in accordance with Manufacturer's design and instructions  
Drywall Contractor to advise and confirm any additional head restraint framing or detailing requirement.

NB: Solid gray hatch denotes existing building fabric.

Rev	Date	By	Crit	Comment
A	16.09.11	RKC	JAS	Status change - Issued for CONSTRUCTION

**BRINGING IDEAS TO LIFE**

**FRANKHAM**

Frankham Consultancy Group Limited  
21 Perrymount Road  
Haywards Heath RH16 3TP  
t 01444 444900 f 01444 455642  
enquire@frankham.com  
www.frankham.com

Client: **WILLMOTT DIXON CONSTRUCTION**

Project Title: **Wealden District Council Hailsham Head Quarters Refurbishments and Alterations**

Drawing Title: **Typical Partition Details Wall Type H Partitions 'WH', Wall Type J Partitions 'WJ', & Profiled Deck Treatment**

Drawn by: RKC	Scale: 1:5@A1	Date: 08.06.11
Designed by: FCG	Checked by: JAS	Approved by: AC
File Ref.: 1\FRANKHAM\CG\2011\HAILSHAM\DW\ARCH\46 DETAIL_SHEMATIC_07180-A-463 DWG - 3001110002	20.06.11 16:26:23	
Drawing No. 521185-A-463	Rev. A	

NB: All information based on supplied third party survey information. All discrepancies to be reported to FCG immediately upon discovery.

All Mechanical & Electrical and Structural information shown indicative only. Please refer to Mechanical & Electrical and Structural documentation.