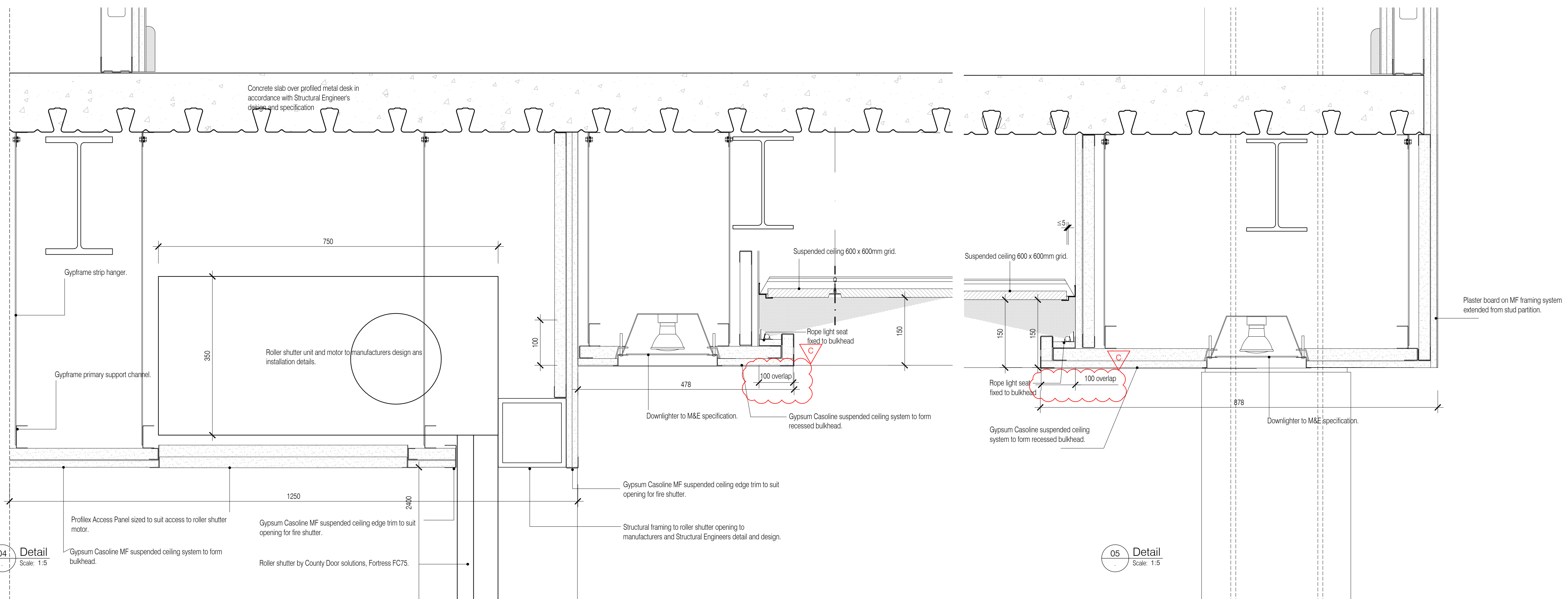


01 Detail
Scale: 1:5

02 Detail
Scale: 1:5

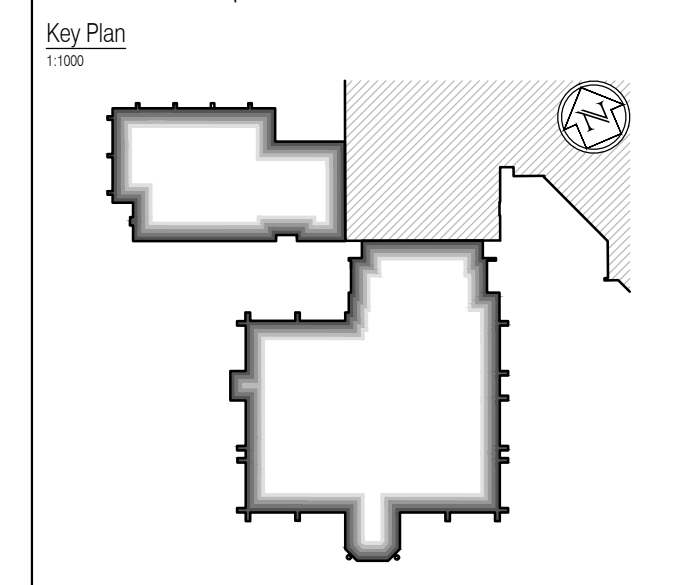
03 Detail
Scale: 1:5



04 Detail
Scale: 1:5

05 Detail
Scale: 1:5

NOTES: Do not scale this drawing. All dimensions to be checked on site prior to commencement or manufacture.



All window details to be in accordance with and finalised by Velfac prior to manufacture and all drawings to be checked on site prior to installation. Architect to be informed on discovery of any discrepancy and work to cease on particular area until resolved with Manufacturer

ISSUED FOR CONSTRUCTION

NB: - Solid gray hatch denotes existing building fabric.

Rev	Date	By	Chk	Comment
C	21.12.11	JAS	AC	Dimension added to bulkhead/ceiling detail
B	11.10.11	RKC	JAS	Downlighters revised...
A	16.09.11	RKC	JAS	Status change - Issued for CONSTRUCTION

BRINGING IDEAS TO LIFE

FRANKHAM

Frankham Consultancy Group Limited
21 Perryman Road
Haywards Heath RH16 3TP
t 01444 444900 f 01444 455642
enquiries@frankham.com
www.frankham.com

Client

WILLMOTT DIXON CONSTRUCTION

Project Title

Wealden District Council
Hailsham Head Quarters
Refurbishments and Alterations

Drawing Title

Suspended ceiling and bulkhead
Perimeter details
Sheet 3

Drawn by: RKC	Scale: 1:5 @A1	Date: 28.06.11
Designed by: FCG	Checked by: JAS	Approved by: AC

File Ref.: X:\FRANKHAM\2011\16\WALDEN\DOOR\444-400 DETAIL_SHEETS\521185-A-412.DWG - 2011/10/28 20:06:11:16:26:36

Drawing No. 521185-A-472	Rev. C
-----------------------------	-----------

NB: All information based on supplied third party survey information. All discrepancies to be reported to FCG immediately upon discovery.