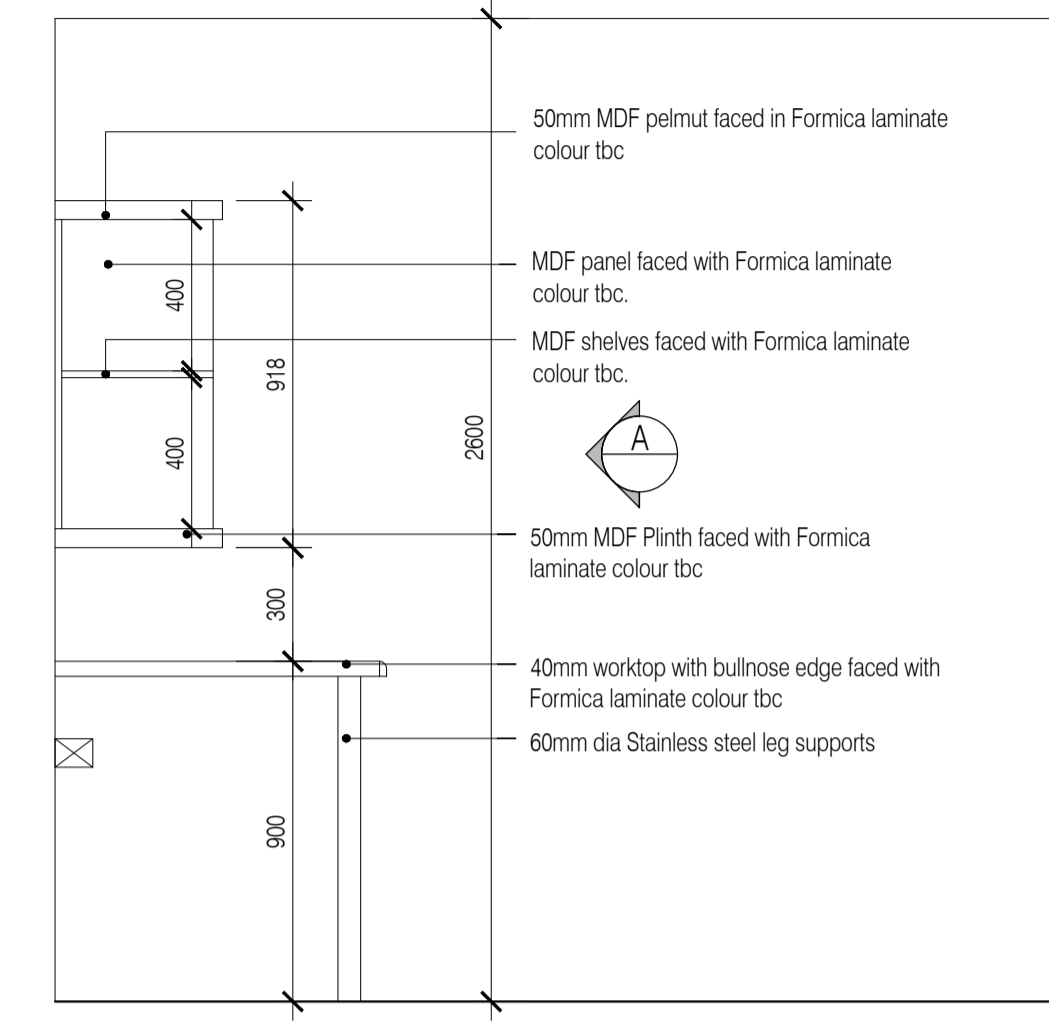


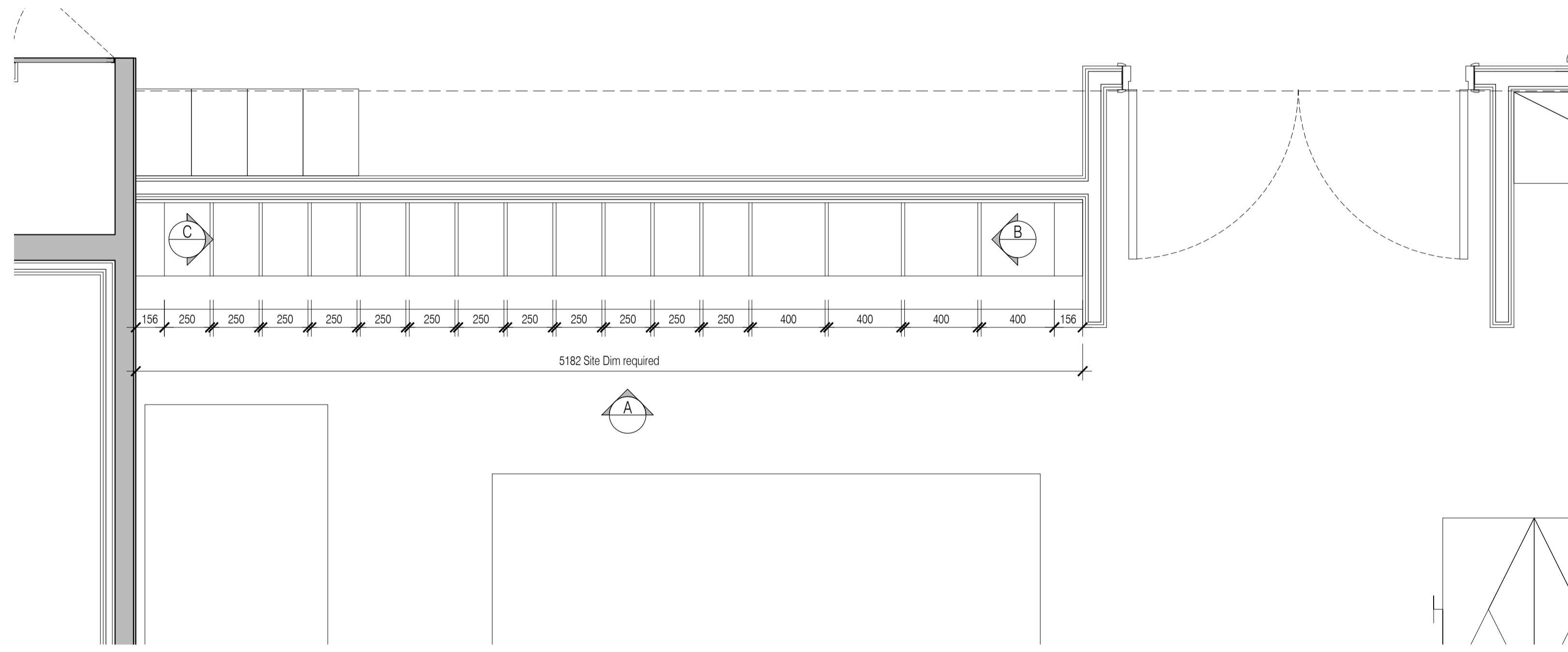
**A Elevation A**  
Scale: 1:20

- 50mm MDF pelmut faced in Formica laminate colour tbc
- MDF panel faced with Formica laminate colour tbc.
- MDF divisions faced with Formica laminate colour tbc.
- MDF infill panel faced with Formica laminate colour tbc.
- 50mm MDF Plinth faced with Formica laminate colour tbc
- 40mm worktop with bullnose edge faced with Formica laminate colour tbc
- 60mm dia Stainless steel leg supports

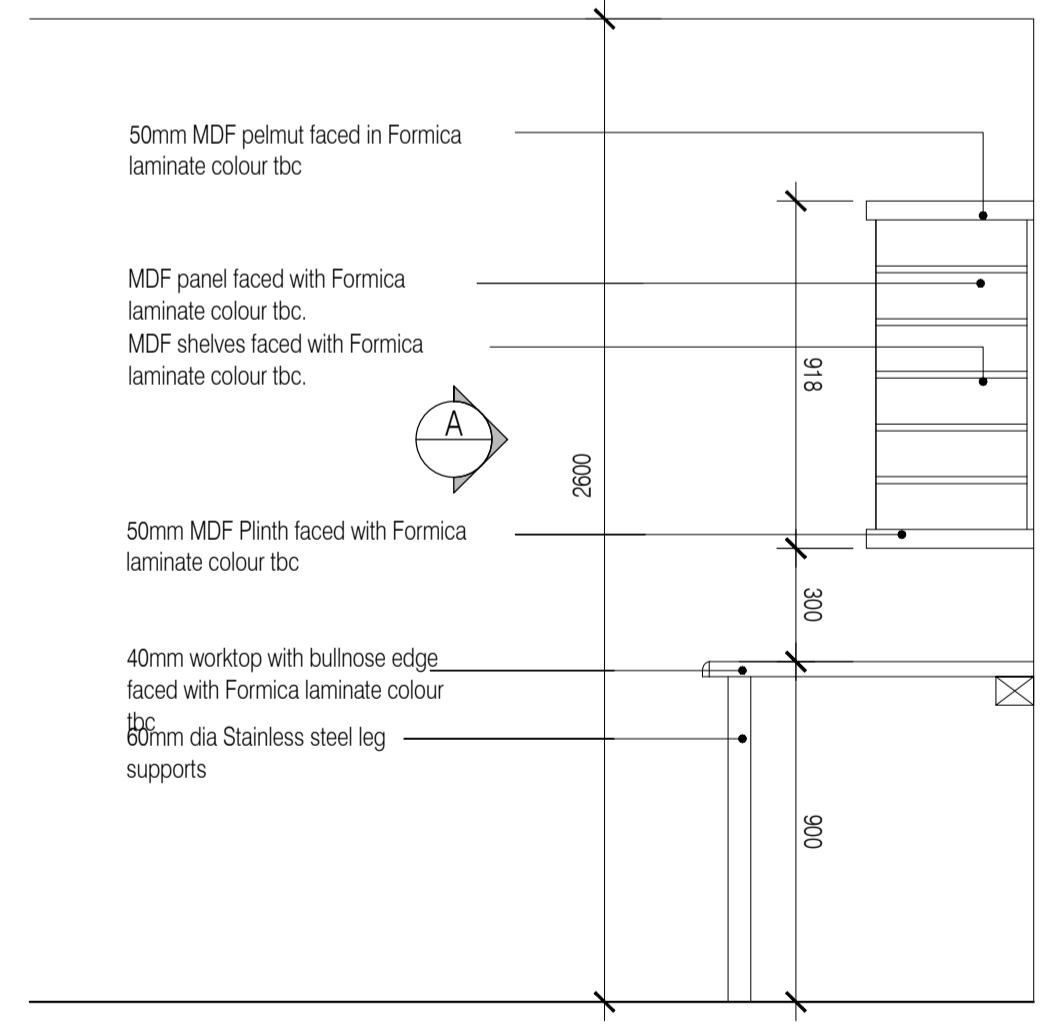


**C Elevation C**  
Scale: 1:20

- 50mm MDF pelmut faced in Formica laminate colour tbc
- MDF panel faced with Formica laminate colour tbc.
- MDF shelves faced with Formica laminate colour tbc.
- 50mm MDF Plinth faced with Formica laminate colour tbc
- 40mm worktop with bullnose edge faced with Formica laminate colour tbc
- 60mm dia Stainless steel leg supports



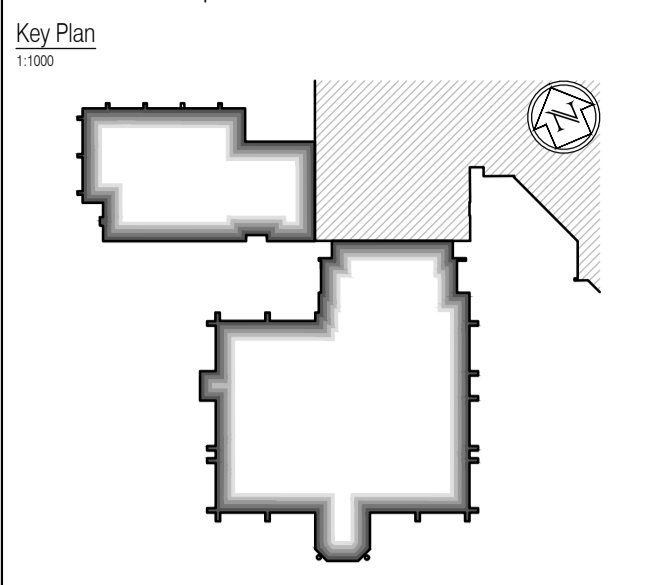
**01 Plan**  
Scale: 1:20



**B Elevation B**  
Scale: 1:20

- 50mm MDF pelmut faced in Formica laminate colour tbc
- MDF panel faced with Formica laminate colour tbc.
- MDF shelves faced with Formica laminate colour tbc.
- 50mm MDF Plinth faced with Formica laminate colour tbc
- 40mm worktop with bullnose edge faced with Formica laminate colour tbc
- 60mm dia Stainless steel leg supports

NOTES: Do not scale this drawing. All dimensions to be checked on site prior to commencement or manufacture.



Key Plan  
1:100

**ISSUED FOR CONSTRUCTION**

NB: - Solid gray hatch denotes existing building fabric.

Rev	Date	By	Chk	Comment
A	16.09.11	RKC	JAS	Status change - Issued for CONSTRUCTION

**BRINGING IDEAS TO LIFE**

**FRANKHAM**

**Frankham Consultancy Group Limited**  
21 Perrymount Road  
Haywards Heath RH16 3TP  
t 01444 444900 f 01444 455642  
enquire@frankham.com  
www.frankham.com

Client

Project Title  
Wealden District Council  
Hailsham Head Quarters  
Refurbishments and Alterations

Drawing Title  
Post Room Worktop &  
Pigeon Hole Details

Drawn by: RKC	Scale: 1:20@A1	Date: 24.06.11
Designed by: FCG	Checked by: JAS	Approved by: AC

File Ref.: X:\FRANKHAM\2011\16\WALDEN\20ARCH\45\_46\_DETAL\_SCHMATIC\_521185-A-492.dwg - 2011/10/18 20:06:11:16:27:19

Drawing No. <b>521185-A-492</b>	Rev. <b>A</b>
------------------------------------	------------------

NB: All information based on supplied third party survey information. All discrepancies to be reported to FCG immediately upon discovery.

All Mechanical & Electrical and Structural information shown indicative only. Please refer to Mechanical & Electrical and Structural documentation.