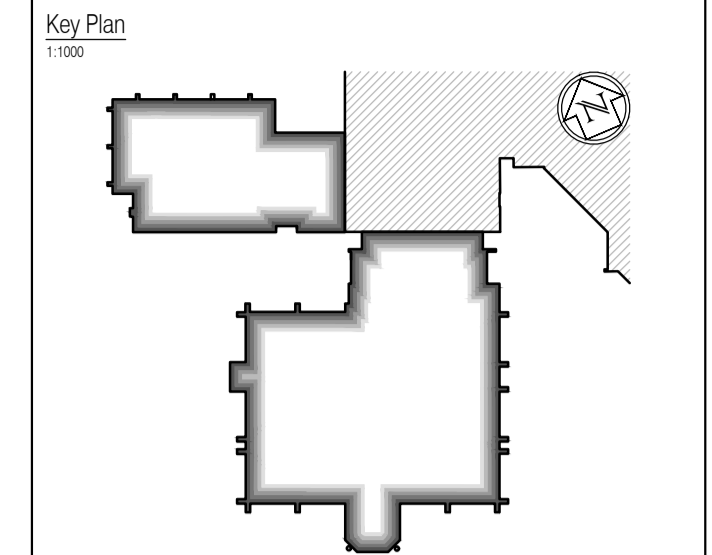


NOTES: Do not scale this drawing. All dimensions to be checked on site prior to commencement or manufacture.



**Notes**

Refer to door schedule 521185-A-620.

Refer to door elevations drawing 521185-A-630.

Refer to NBS specification L20/L40.

Refer to fire seal/acoustic seal details drawing 521185-A-450.

Refer to drawings 521185-A-416 & 417 for new Vellac door details in existing openings.

Refer to drawings 521185-A-410 to 414 for external timber doors, cedar clad, details.

Refer to drawings 521185-A-410 to 412 and 414 Kaba sliding entrance door details, link block ground floor.

Refer to drawings 521185-A-418 and 419 Kaba internal sliding door details, link block ground floor.

Refer to drawing 521185-A-434 external metal door, second floor link block.

**ISSUED FOR CONSTRUCTION**

NB: - Solid gray hatch denotes existing building fabric.

Rev	Date	By	Crk	Comment
A	16.09.11	RKC	JAS	Status change - Issued for CONSTRUCTION

BRINGING IDEAS TO LIFE



**FRANKHAM**

**Frankham Consultancy Group Limited**  
 21 Pymms Road  
 Haywards Heath RH16 3TP  
 t 01444 444900 f 01444 455642  
 enquiry@frankham.com  
 www.frankham.com

Client  
**WILLMOTT DIXON CONSTRUCTION**

Project Title  
 Wealden District Council  
 Hailsham Head Quarters  
 Refurbishments and Alterations

Drawing Title  
 Door Elevations

Drawn by: RKC	Scale: 1:20@A1	Date: 18.02.11
Designed by: FCG	Checked by: JAS	Approved by: AC

File Ref.: X:\FRANKHAM\CG\521185\WALDEN\DOOR\521185-A-630.DWG  
 521185-A-630.DWG - 20/06/11 16:27:32

Drawing No. <b>521185-A-630</b>	Rev. <b>A</b>
------------------------------------	------------------

