

All Disabled and Ambulant Disabled facilities to comply with Approved Document Part M - Access to and use of buildings, Disability Discrimination Act 1995 and BS8300 as required

Install new canopy over landing. Construct frame and joist and firings, with Polycarb sheet to drain to gutter to connect to RWP adjacent. Facia boards to be painted both sides prior to fixing.

Install new DDA compliant handrails in accordance with BS8300:2009 5.10.2. 45mmØ polyester powder coated, 1100mm above landings

Install new steel posts to support stairs in accordance with Structural Engineers design and specification

**01 Metal Stair South Elevation**  
Scale: 1:20

Install new canopy over landing. Construct frame and joist and firings, with Polycarb sheet to drain to gutter to connect to RWP adjacent. Facia boards to be painted both sides prior to fixing.

Install new DDA compliant handrails in accordance with BS8300:2009 5.10.2. 45mmØ polyester powder coated, 1100mm above landings

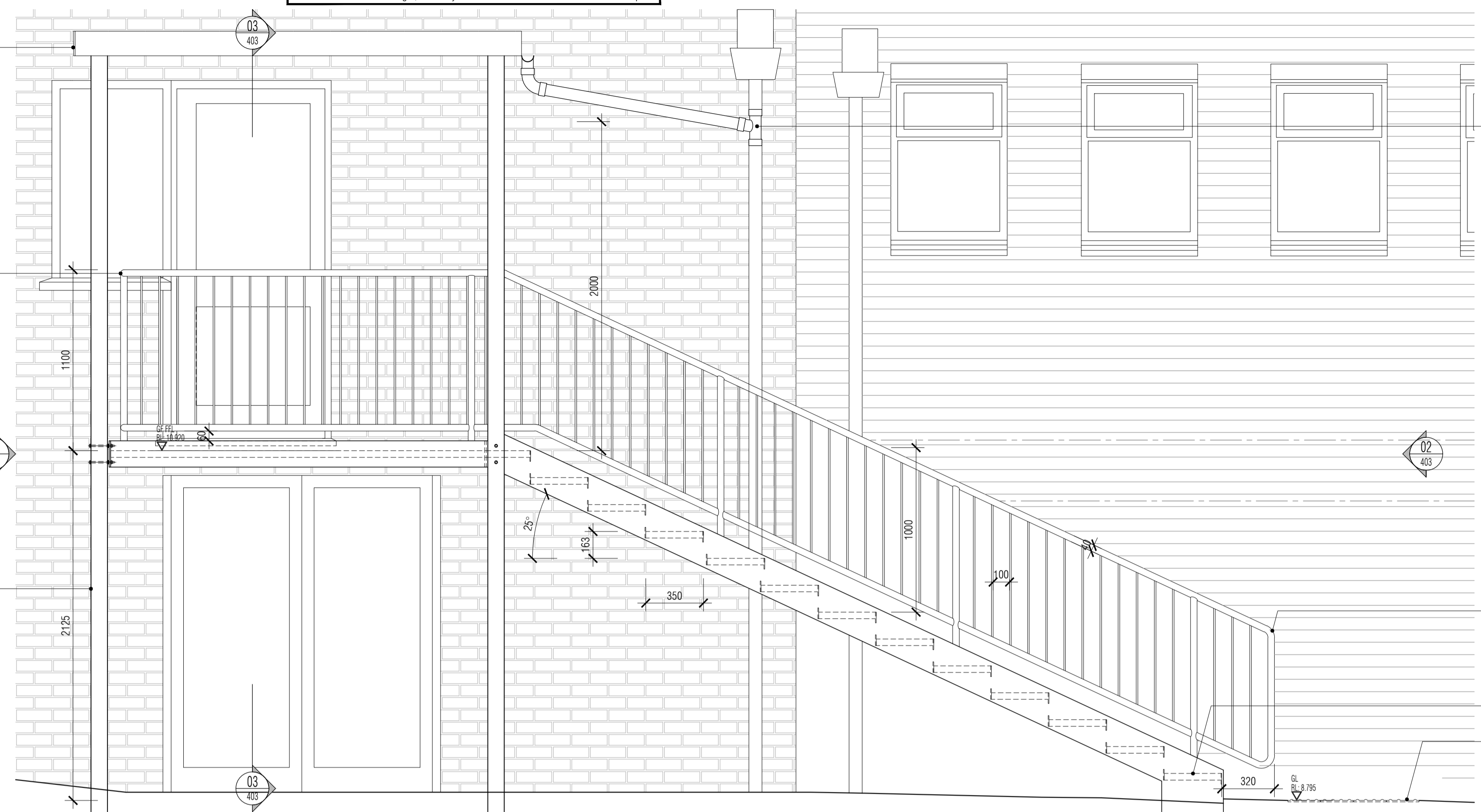
String plate to be reduced in height outside door threshold to prevent step over into office.

At head of stairs, install new DDA compliant "corduroy" tactile paving recessed into frame to ensure level in accordance with BS8300:2009 5.9.6. 800mm wide, 400mm from bottom nosing, spanning 400mm each side of stair if possible

Install new steel posts to support stairs in accordance with Structural Engineers design and specification

**02 Metal Stair South Section**  
Scale: 1:20

NB: All information based on supplied third party survey information. All discrepancies to be reported to FCG immediately upon discovery.



Gutter to connect to RWP adjacent.

Install new DDA compliant handrails each side of stairs in accordance with BS8300:2009 5.10.2. 45mmØ polyester powder coated, 1000mm above stair pitch to provide a min clear width of 1m to extend 300mm past top and bottom steps

Install new DDA compliant stairs in accordance with BS8300:2009 5.9.

At base and head of stairs, install new DDA compliant "corduroy" tactile paving in accordance with BS8300:2009 5.9.6. 800mm wide, 400mm from bottom nosing, spanning 400mm each side of stair

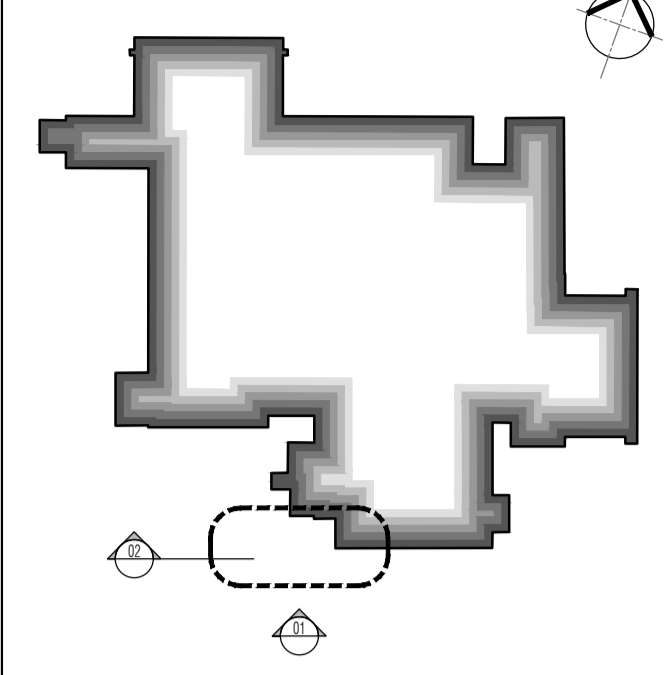
Gutter to connect to RWP adjacent.

Install new DDA compliant handrails each side of stairs in accordance with BS8300:2009 5.10.2. 45mmØ polyester powder coated, 1000mm above stair pitch to provide a min clear width of 1m to extend 300mm past top and bottom steps

Install new DDA compliant stairs in accordance with BS8300:2009 5.9.

At base and head of stairs, install new DDA compliant "corduroy" tactile paving in accordance with BS8300:2009 5.9.6. 800mm wide, 400mm from bottom nosing, spanning 400mm each side of stair

NOTES: Do not scale this drawing. All dimensions to be checked on site prior to commencement or manufacture. Key Plan (mts)



STAIRCASE CRITERIA

LOWER GF to GROUND	floor total rise	= 2125 mm
13 number RISERS	@	= 163.461 mm
12 number GOINGS	@	= 350 mm
PITCH of stair to be		= 25.0341 °
Overall STRING to be		= 1210 mm

Height to top of handrail to be min 900mm  
Height to top of guarding to be min 1100mm  
Balusters to be max 100mm clear spaced apart.  
Min 2000mm clear headroom above stair pitch line.

**ISSUED FOR CONSTRUCTION**

All details referenced in call outs supercede general arrangement or larger depictions.

Rev	Date	By	Chk	Comment
C2	28.05.12	RKC	JAS	Gen revs per Client comments
C1	29.03.12	RKC	JAS	Issued for CONSTRUCTION

**BRINGING IDEAS TO LIFE**

**FRANKHAM**

Frankham Consultancy Group Limited  
21 Perryman Road  
Haywards Heath RH16 3TP  
t 01444 444900 f 01444 455642  
enquiry@frankham.com  
www.frankham.com

Client

Mansell  
Contract N°: MC0269

Project Title

Eastbourne & Worthing  
Crematoria  
Refurbishments and Alterations

Drawing Title

Eastbourne Crematorium  
External Stair Elevation and Section 02

Drawn by: RKC	Scale: 1:20@A1	Date: 02.03.12
Designed by: FCG	Checked by: JAS	Approved by: AC

File Ref.: X:\FRANKHAM\2\081212\02 CREMATORIA\ARCH\402-402-E.DWG	20.06.11.12.17.23
Drawing No: 521260-A-402-E	Rev: C2