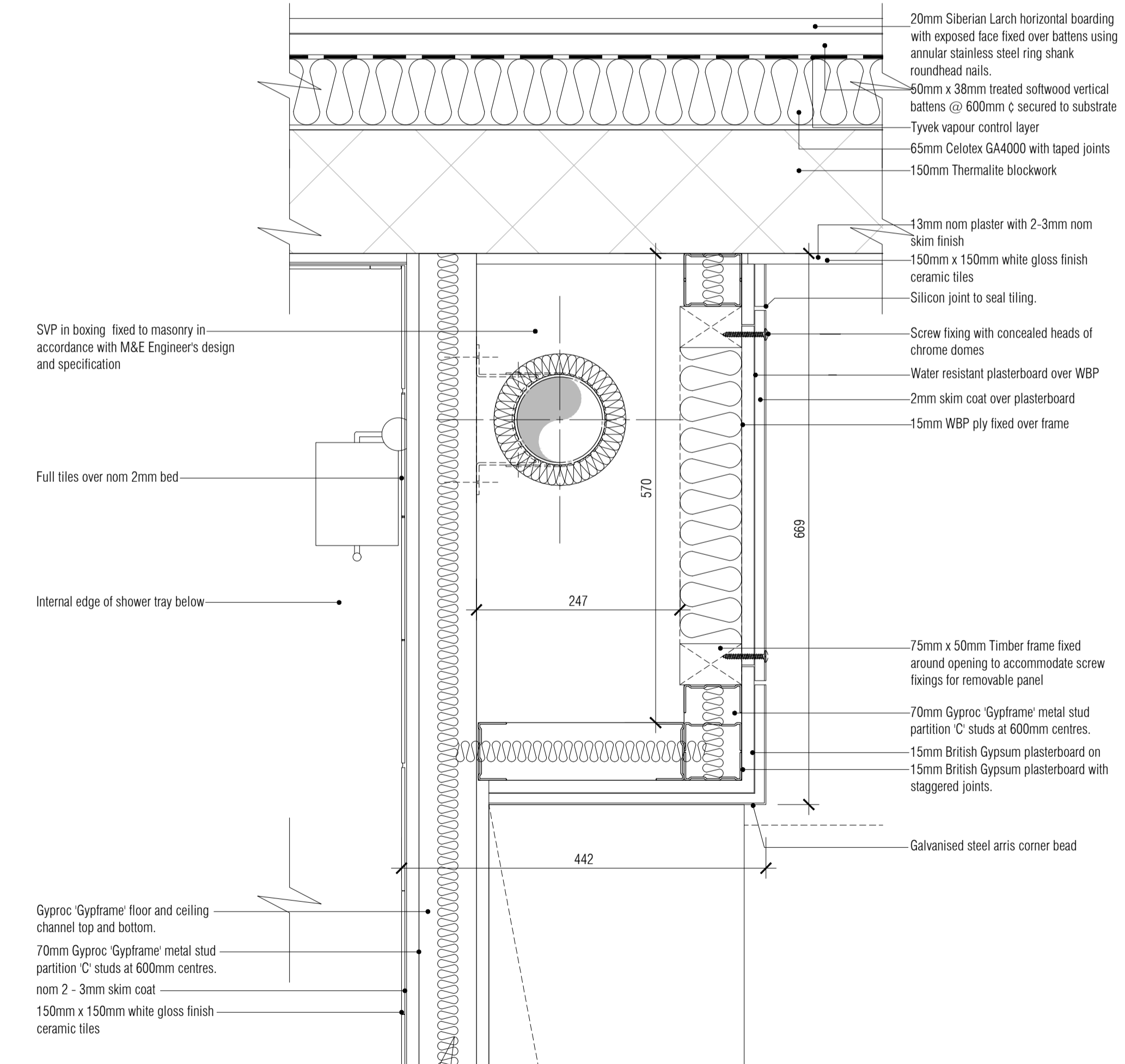
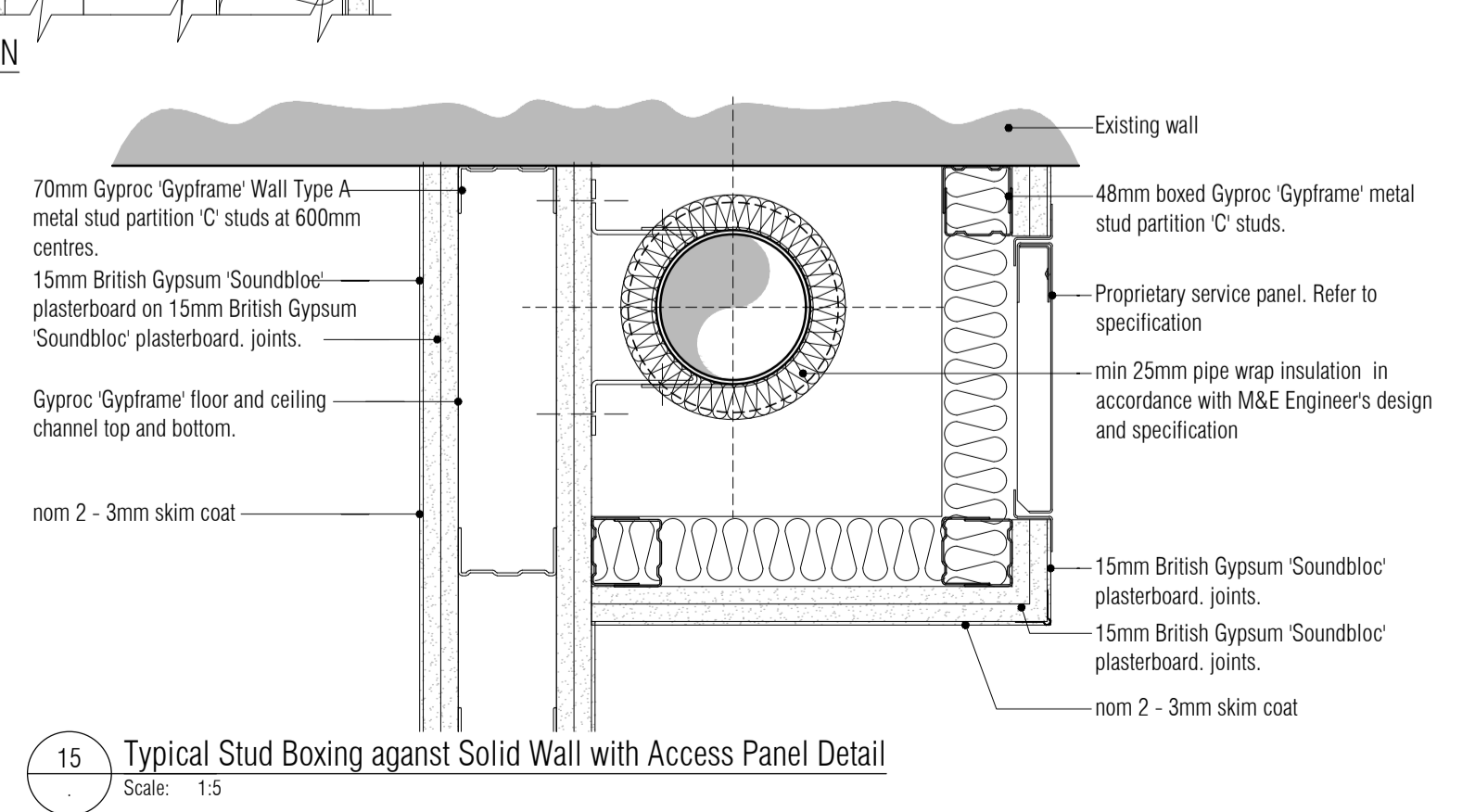
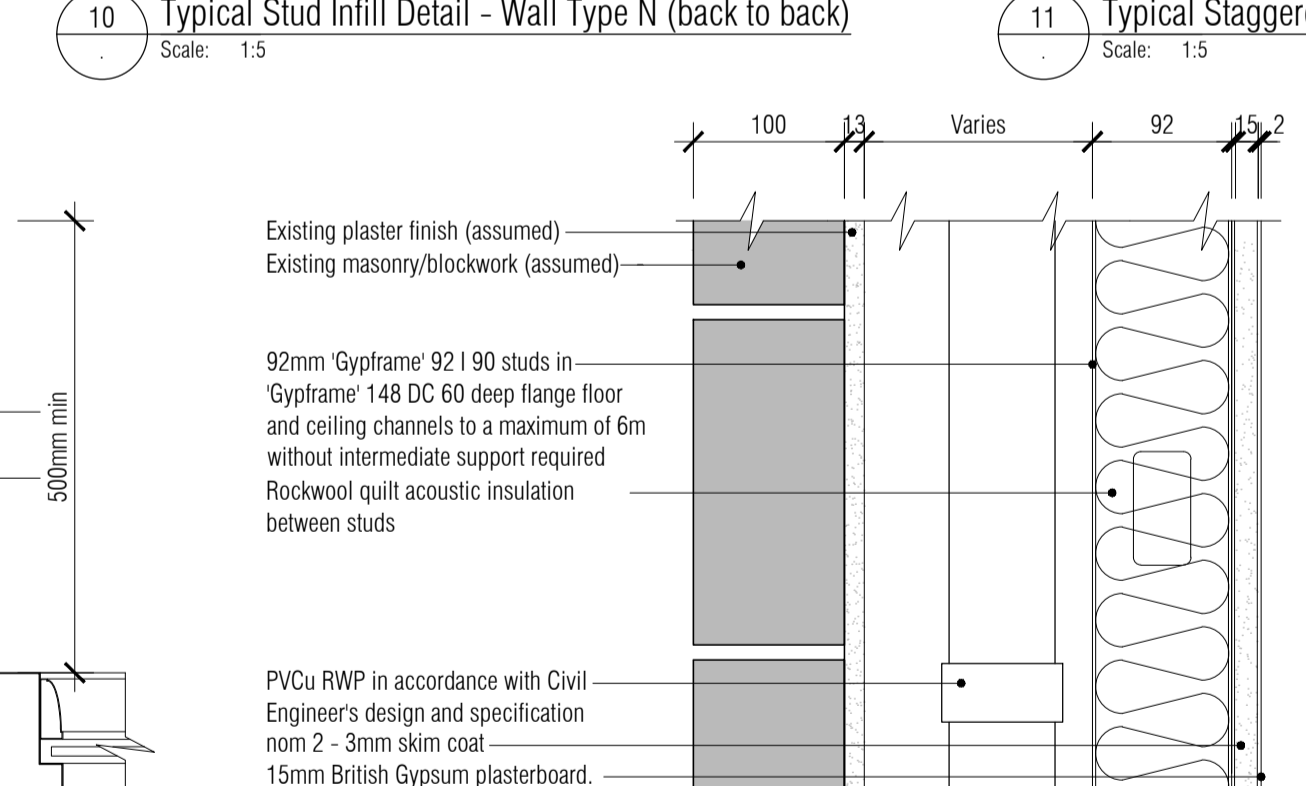
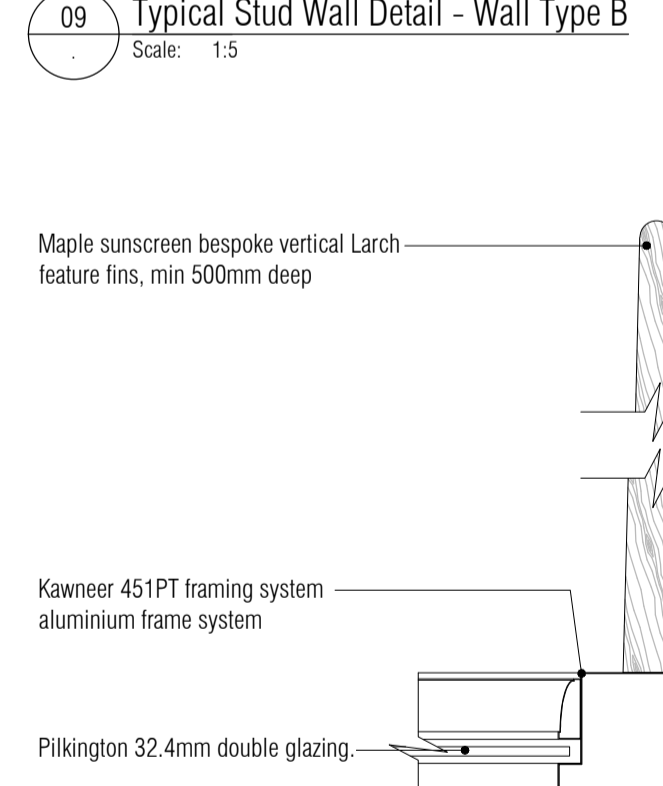
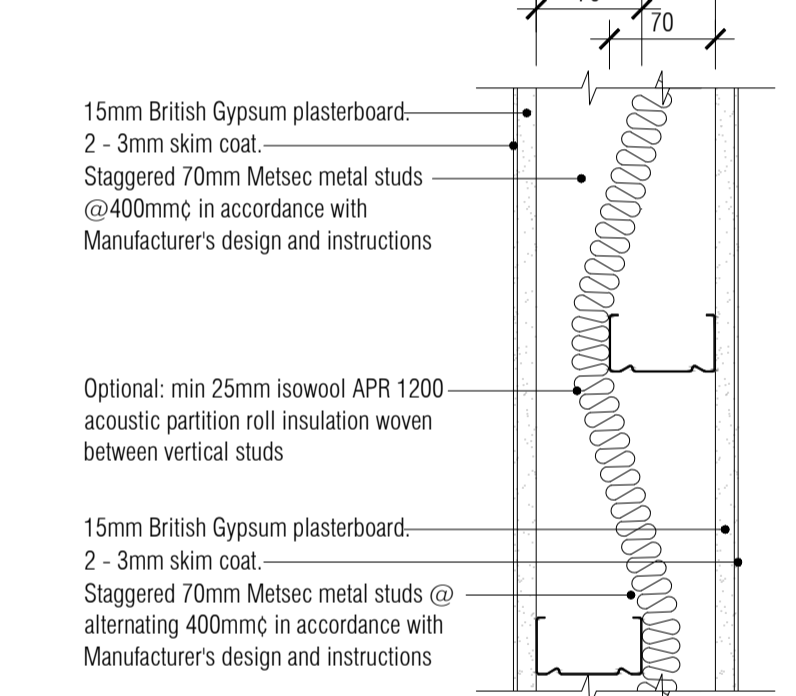
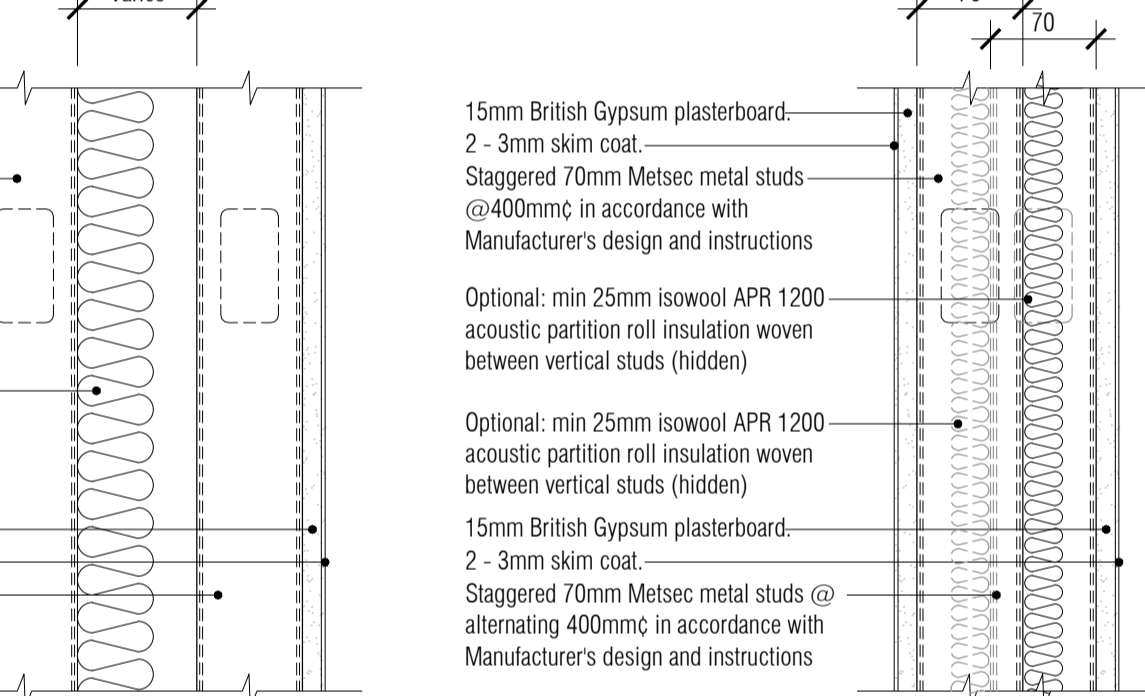
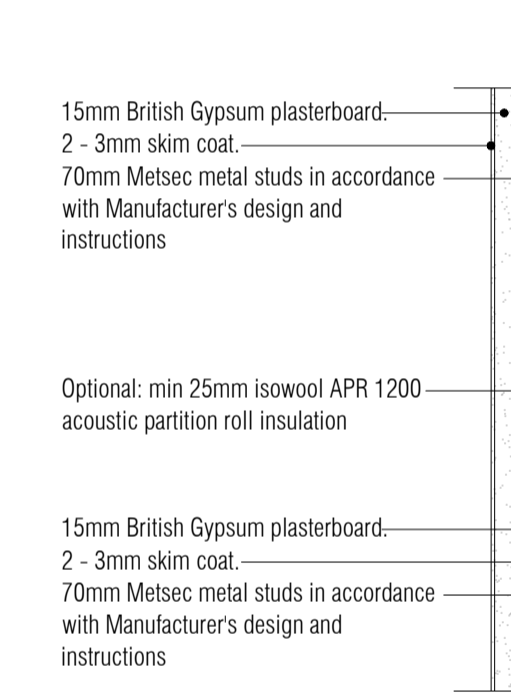
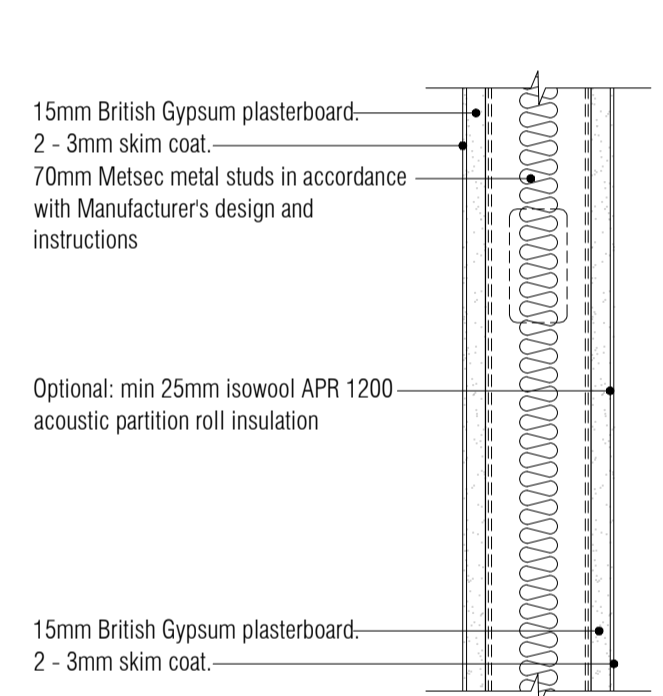
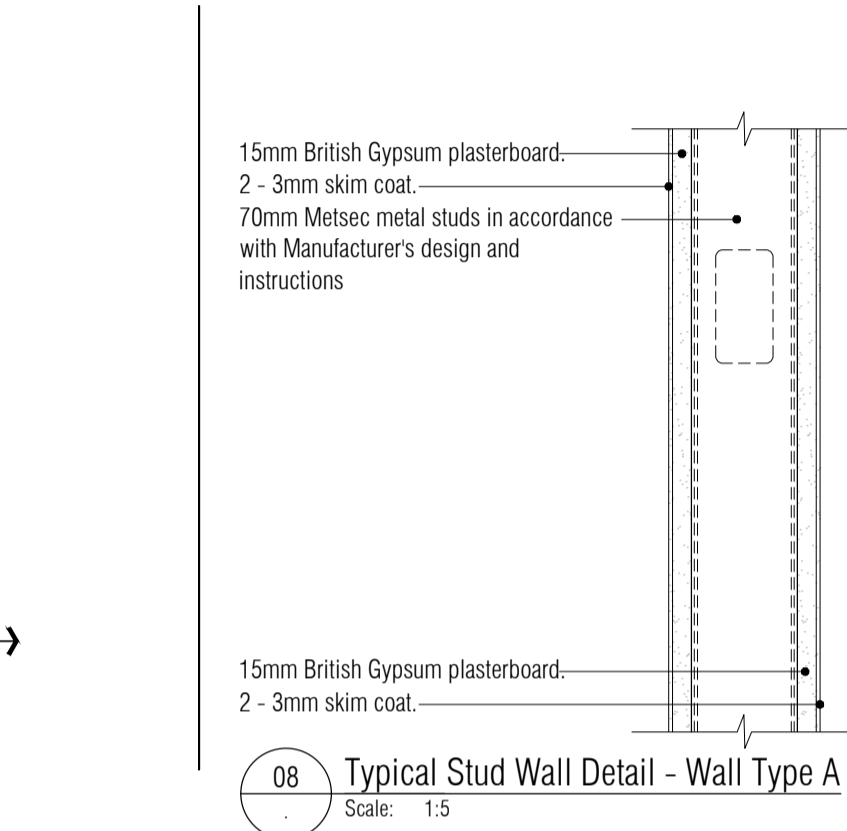
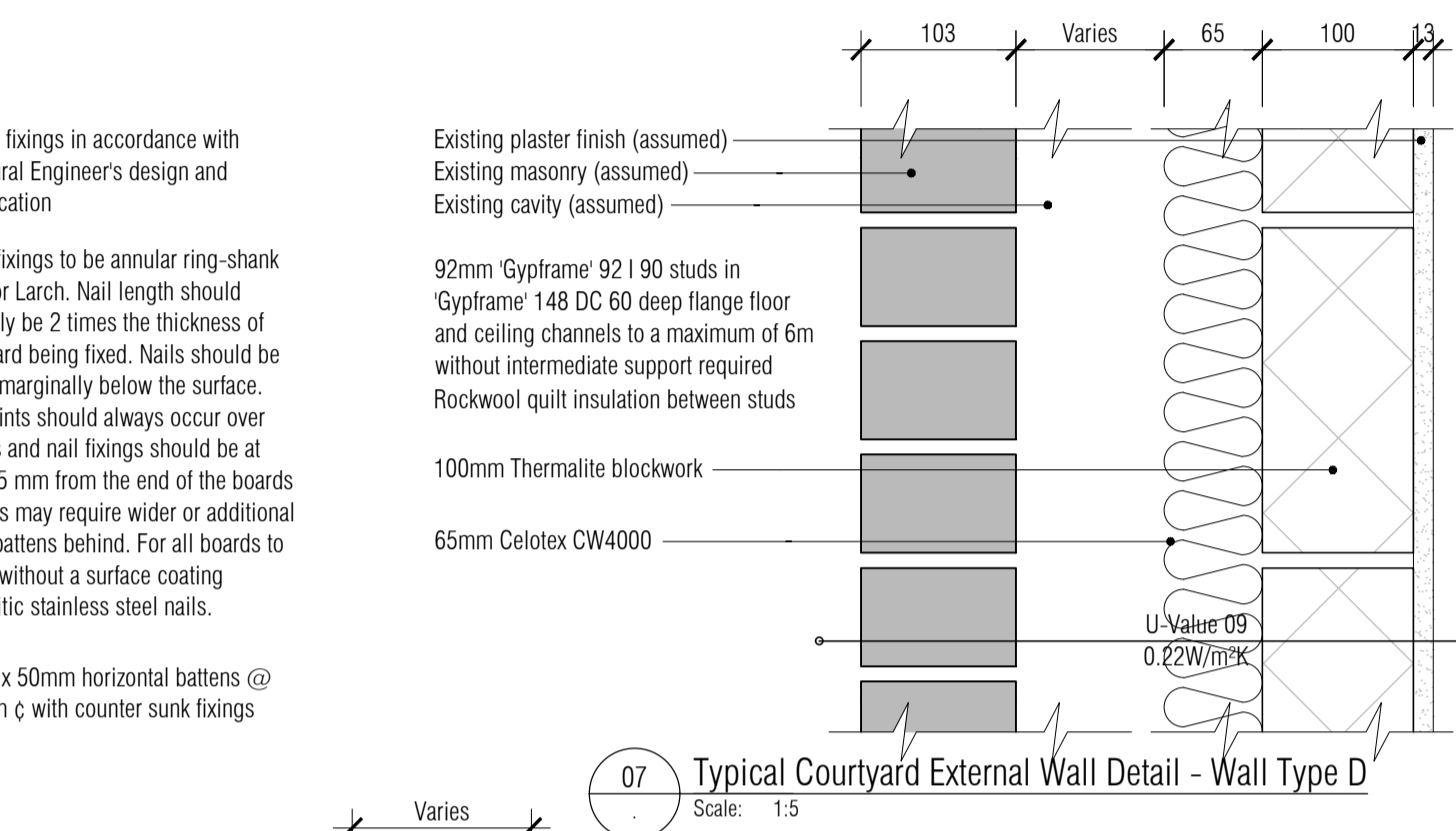
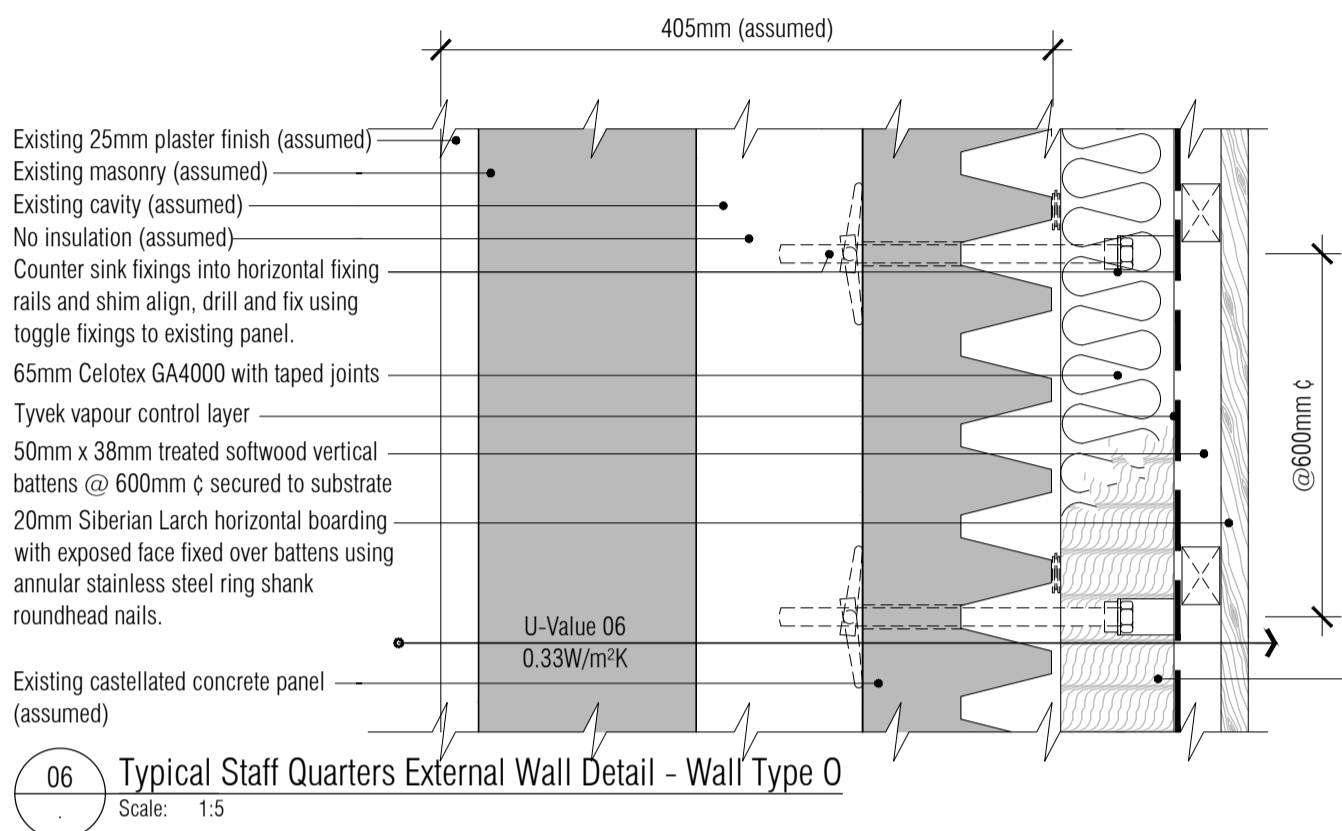
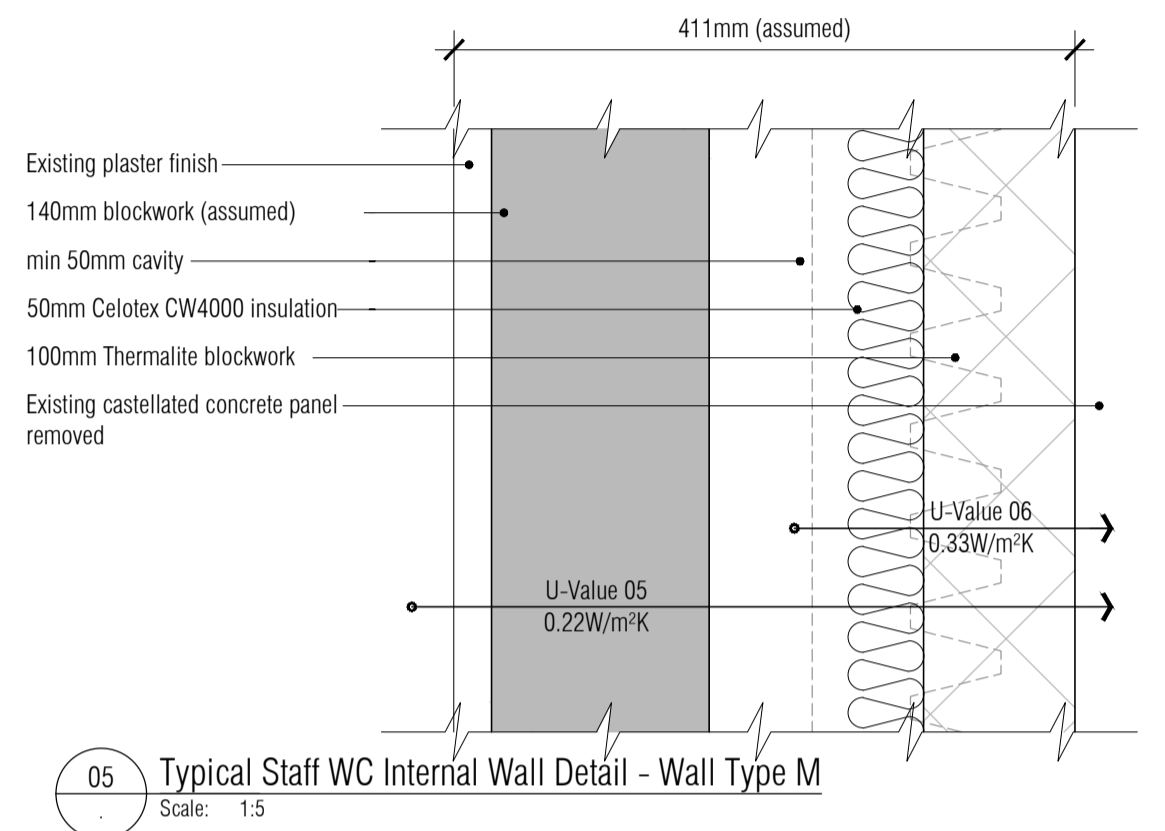
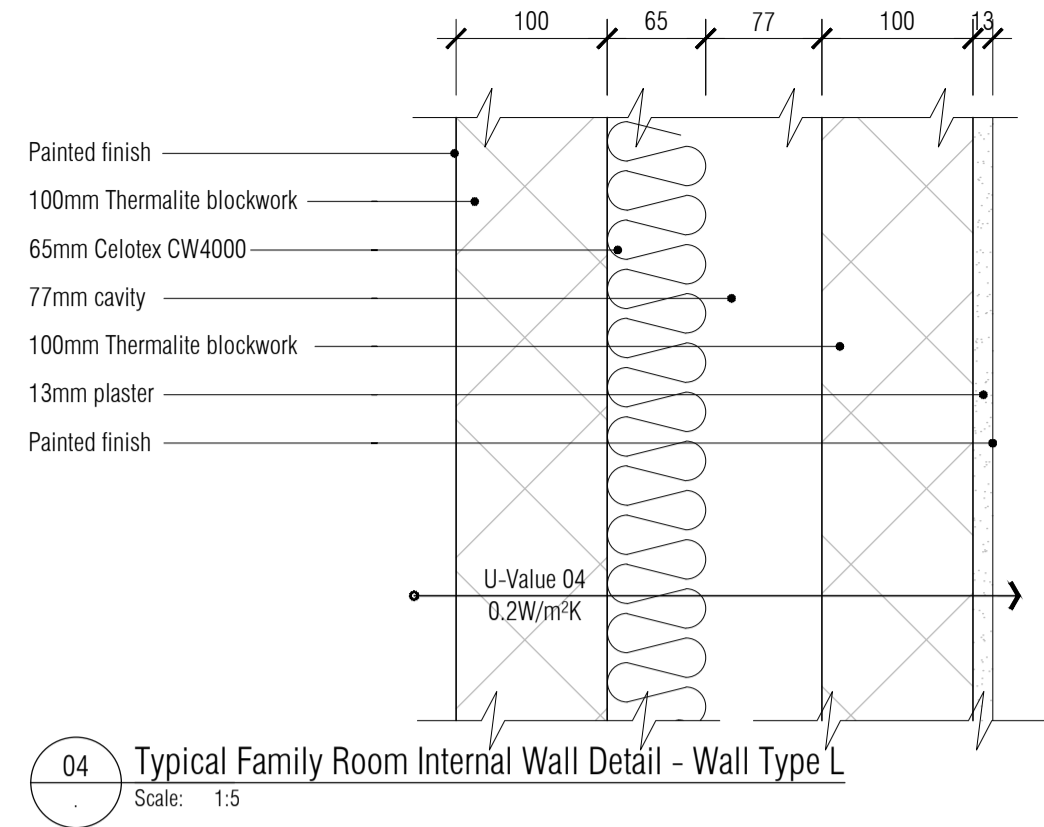
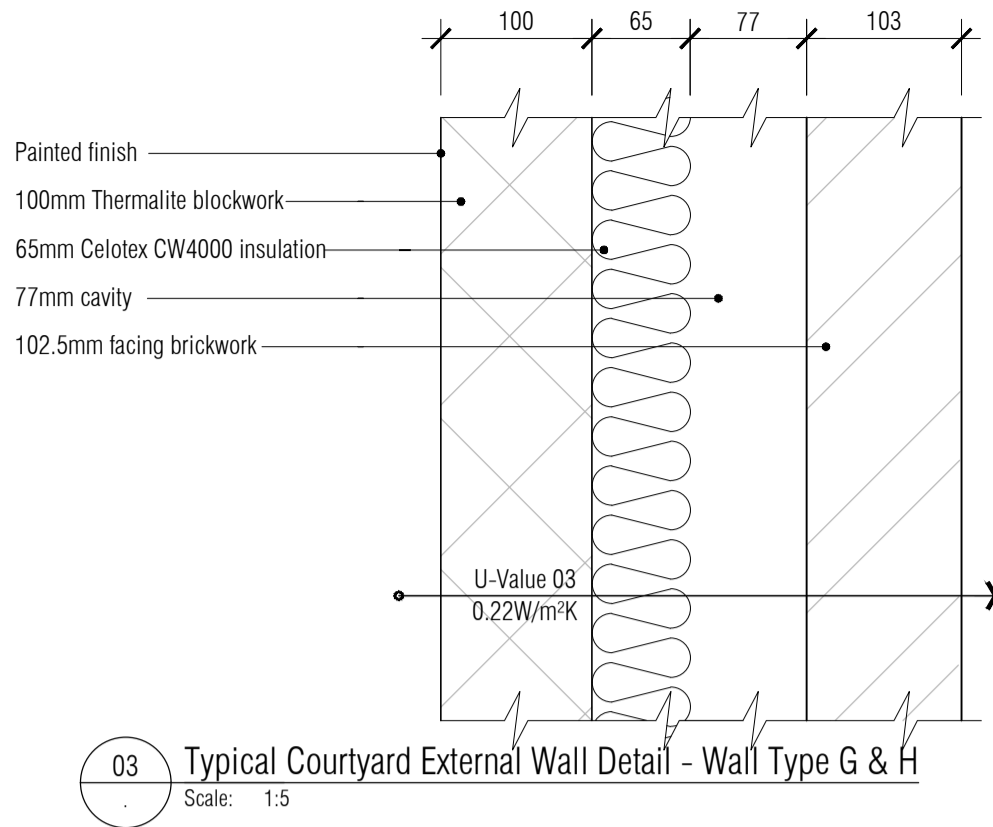
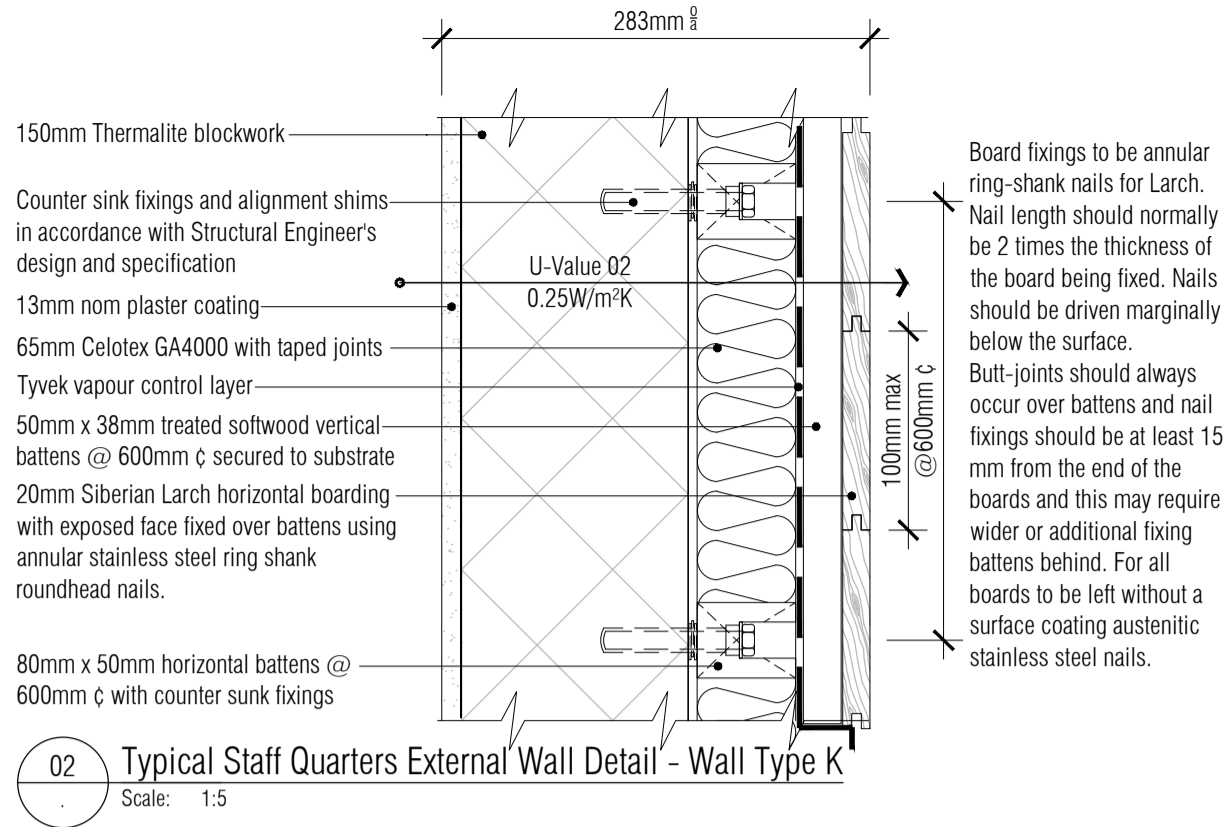
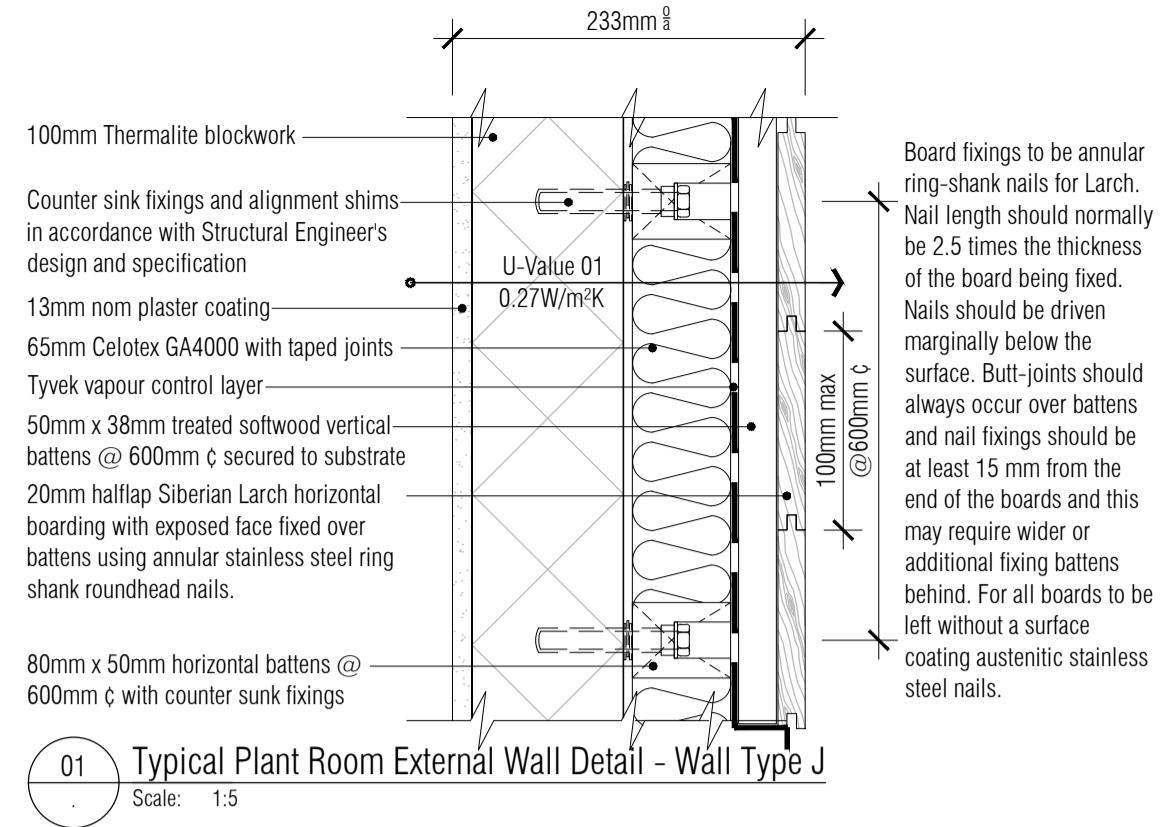
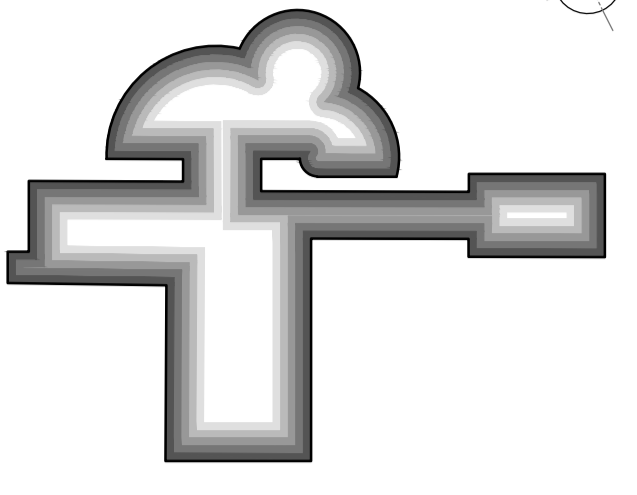


All Disabled and Ambulant Disabled facilities to comply with Approved Document Part M - Access to and use of buildings', Disability Discrimination Act 1995 and BS83000 as required



NOTES: Do not scale this drawing. All dimensions to be checked on site prior to commencement or manufacture. Key Plan (nts)



- Partition Strategy Key
- WA 70mm C-Stud & 1 layer 15mm Duraline plasterboard each side - no quilt.
 - WB 70mm C-Stud & 1 layer 15mm Duraline plasterboard each side - 25mm quilt.
 - WC 100mm ThermaLite HiStrength 7kN blockwork.
 - WD 100mm ThermaLite HiStrength 7kN blockwork.
 - WE 150mm ThermaLite Shield blockwork.
 - WF 200mm ThermaLite HiStrength 7kN blockwork.
 - WG 102.5mm facing brickwork, 35mm cavity, 65mm insulation, 100mm ThermaLite Shield blockwork.
 - WH 102.5mm facing brickwork, 35mm cavity, 65mm insulation, 100mm ThermaLite HiStrength 7kN blockwork.
 - WI 100mm ThermaLite HiStrength 7kN blockwork, 65mm insulation, Larch horizontal boarding.
 - WJ 150mm ThermaLite HiStrength 7kN blockwork, 65mm insulation, Larch horizontal boarding.
 - WK 100mm ThermaLite HiStrength 7kN blockwork, 35mm cavity, 65mm insulation.
 - WN 70mm C-Stud & 1 layer 15mm Duraline plasterboard - Rockwool quilt.
 - WO 80mm insulation, Larch horizontal boarding over existing castellated concrete cladding panel.
 - WP Aluminium double glazing curtain walling with bespoke Larch fins.

ISSUED FOR CONSTRUCTION

All details referenced in call outs supercede general arrangement or larger depictions.

Rev	Date	By	Chk	Comment
C2	09.07.12	RKC	JAS	Issued for Construction
P7	19.06.12	RKC	JAS	Cavities rationalised
P6	12.06.12	RKC	JAS	Detail added
P5	01.06.12	RKC	JAS	Cavities widened to suite cladding system & sections
P4	18.05.12	RKC	JAS	Detail revd. Abeyance removed
C1	23.04.12	RKC	JAS	Issued for CONSTRUCTION

BRINGING IDEAS TO LIFE

FRANKHAM

Frankham Consultancy Group Limited
21 Perrymount Road
Haywards Heath RH16 3TP
t 01444 444900 f 01444 456642
enquire@frankham.com
www.frankham.com

Client

Mansell
Contract N°: Worthing

Project Title

Eastbourne & Worthing
Crematoria
Refurbishments and Alterations

Drawing Title

Worthing Crematorium
Wall Typical Details

Drawn by:	Scale:	Date:
RKC	1:5@A1	31.01.12
Designed by:	Checked by:	Approved by:
FCG	JAS	AC

File Ref: X:\FRANKHAM\2012\1217\45\01\02\03\04\05\06\07\08\09\10\11\12\13\14\15\16\17\18\19\20\21\22\23\24\25\26\27\28\29\30\31\32\33\34\35\36\37\38\39\40\41\42\43\44\45\46\47\48\49\50\51\52\53\54\55\56\57\58\59\60\61\62\63\64\65\66\67\68\69\70\71\72\73\74\75\76\77\78\79\80\81\82\83\84\85\86\87\88\89\90\91\92\93\94\95\96\97\98\99\100

Drawing No.	Rev.
521260-A-405-W	C2

NB: All information based on supplied third party survey information. All discrepancies to be reported to FCG immediately upon discovery.