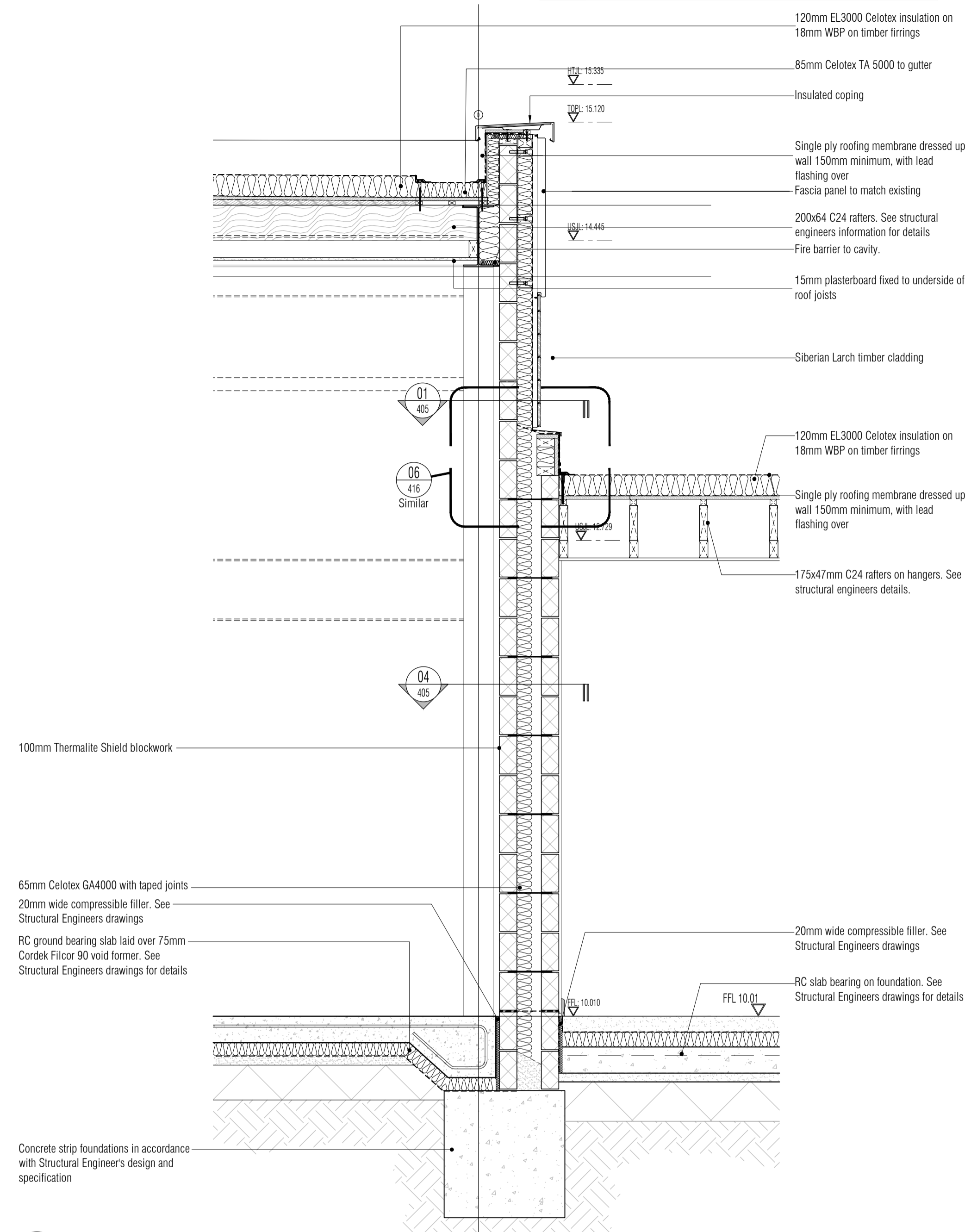
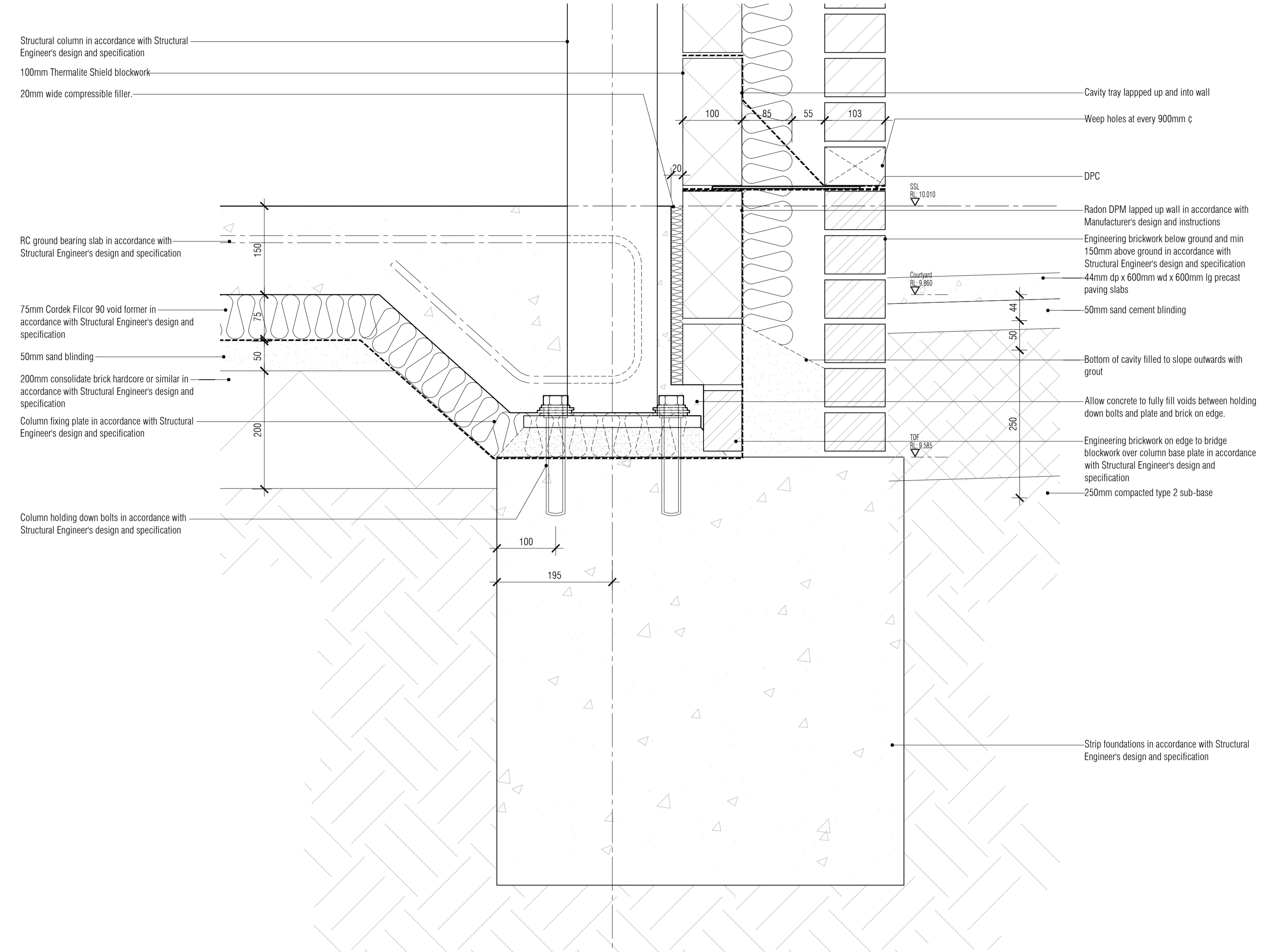


All Disabled and Ambulant Disabled facilities to comply with Approved Document Part M - Access to and use of buildings, Disability Discrimination Act 1995 and BS83000 as required



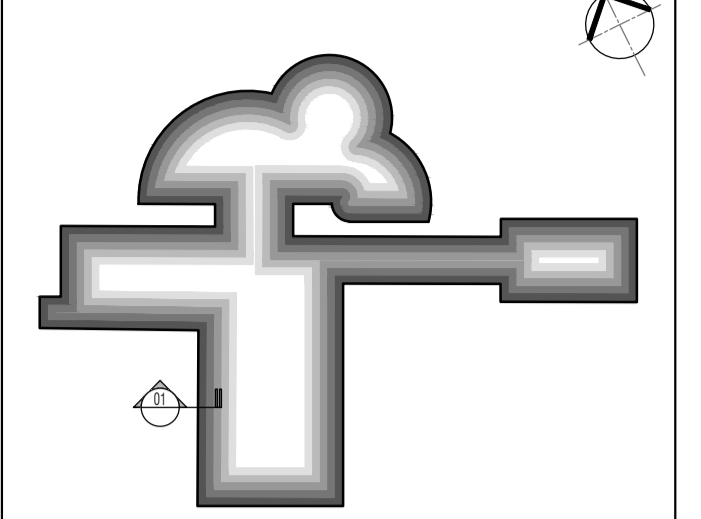
01 Detail Section I Through Plant Room / Family Room
Scale: 1:20

NB: All information based on supplied third party survey information. All discrepancies to be reported to FCG immediately upon discovery.



02 Courtyard Surface & Column Base Foundation Fixing Detail
Scale: 1:5

NOTES: Do not scale this drawing. All dimensions to be checked on site prior to commencement or manufacture. Key Plan (nts)



- 100mm Thermalite Shield blockwork
- 65mm Celotex GA4000 with taped joints
- 20mm wide compressible filler. See Structural Engineers drawings
- RC ground bearing slab laid over 75mm Cordek Filcor 90 void former. See Structural Engineers drawings for details
- Concrete strip foundations in accordance with Structural Engineers design and specification
- 120mm EL3000 Celotex insulation on 18mm WBP on timber firrings
- 85mm Celotex TA 5000 to gutter
- Insulated coping
- Single ply roofing membrane dressed up wall 150mm minimum, with lead flashing over
- Fascia panel to match existing
- 200x64 C24 rafters. See structural engineers information for details
- Fire barrier to cavity.
- 15mm plasterboard fixed to underside of roof joists
- Siberian Larch timber cladding
- 175x47mm C24 rafters on hangers. See structural engineers details.
- 20mm wide compressible filler. See Structural Engineers drawings
- RC slab bearing on foundation. See Structural Engineers drawings for details
- Structural column in accordance with Structural Engineers design and specification
- 100mm Thermalite Shield blockwork
- 20mm wide compressible filler.
- RC ground bearing slab in accordance with Structural Engineers design and specification
- 75mm Cordek Filcor 90 void former in accordance with Structural Engineers design and specification
- 50mm sand blinding
- 200mm consolidate brick hardcore or similar in accordance with Structural Engineers design and specification
- Column fixing plate in accordance with Structural Engineers design and specification
- Column holding down bolts in accordance with Structural Engineers design and specification
- Cavity tray lapped up and into wall
- Weep holes at every 900mm c
- DPC
- Radon DPM lapped up wall in accordance with Manufacturer's design and instructions
- Engineering brickwork below ground and min 150mm above ground in accordance with Structural Engineer's design and specification
- 44mm dp x 600mm wd x 600mm lg precast paving slabs
- 50mm sand cement blinding
- Bottom of cavity filled to slope outwards with grout
- Allow concrete to fully fill voids between holding down bolts and plate and brick on edge.
- Engineering brickwork on edge to bridge blockwork over column base plate in accordance with Structural Engineer's design and specification
- 250mm compacted type 2 sub-base
- Strip foundations in accordance with Structural Engineer's design and specification

ISSUED FOR CONSTRUCTION

All details referenced in call outs supercede general arrangement or larger depictions.

Rev	Date	By	CHK	Comment
C4	20.08.12	RKC	JAS	Cladding revd
C3	21.06.12	RKC	JAS	Polythene DPM changed to Radon DPM
C2	25.05.12	RKC	JAS	Detail added for Building Control
C1	23.04.12	RKC	JAS	Issued for CONSTRUCTION

BRINGING IDEAS TO LIFE



FRANKHAM

Frankham Consultancy Group Limited
21 Perrymount Road
Haywards Heath RH16 3TP
t 01444 444900 f 01444 455642
enquire@frankham.com
www.frankham.com

Client



Mansell
Contract N°: Worthing

Project Title

Eastbourne & Worthing
Crematoria
Refurbishments and Alterations

Drawing Title



Worthing Crematorium
Wall Sections I

Drawn by: RKC	Scale: 1:20@A1	Date: 02.04.12
Designed by: FCG	Checked by: JAS	Approved by: AC

File Ref.: X:\FRANKHAM\2\JOB\02100 CREMATORIA\WCH\455-459\02101.DWG	20.06.11 12:18:58
Drawing No: 521260-A-417-W	Rev: C4