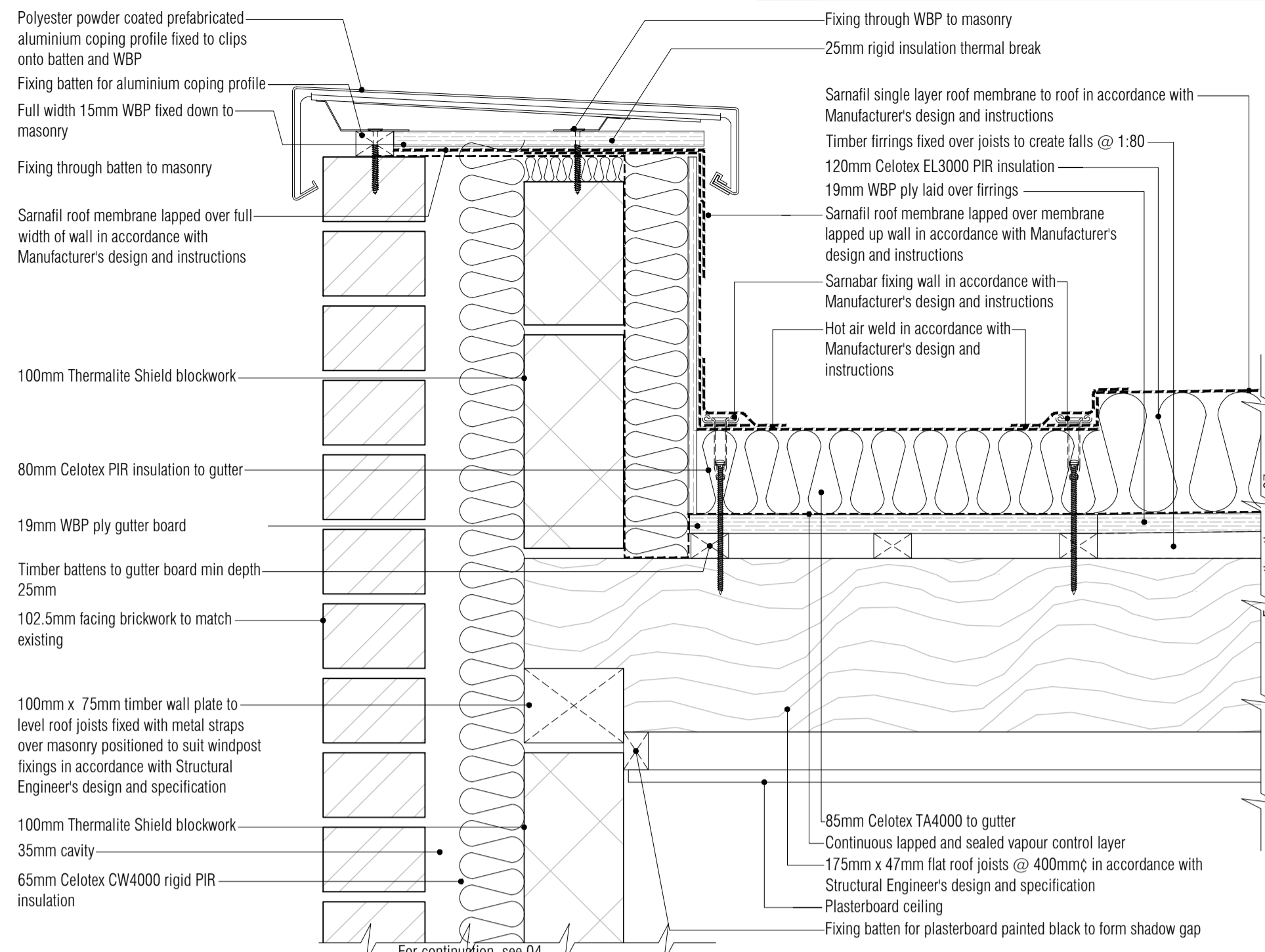
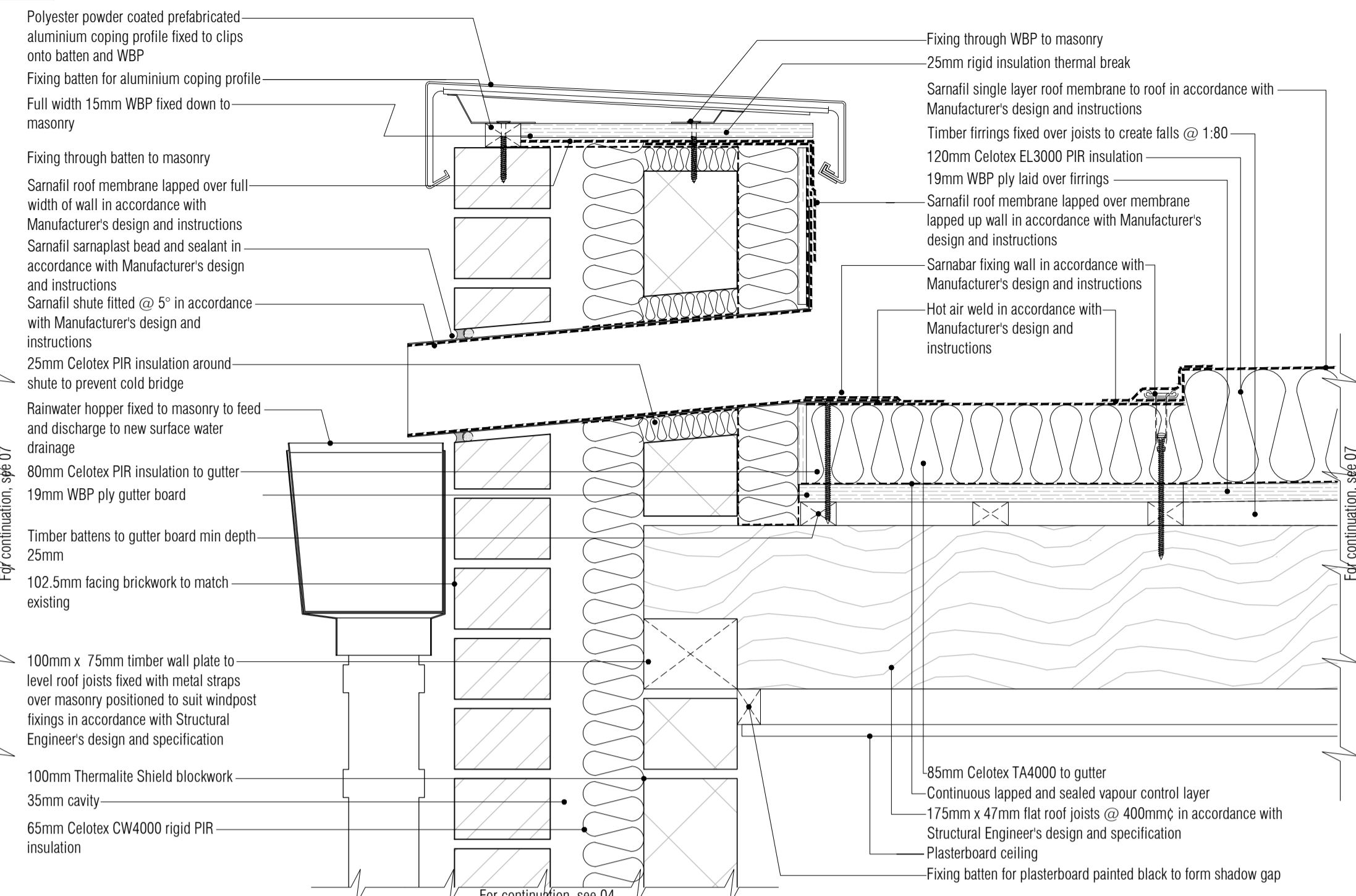


All Disabled and Ambulant Disabled facilities to comply with Approved Document Part M - Access to and use of buildings, Disability Discrimination Act 1995 and BS8300 as required

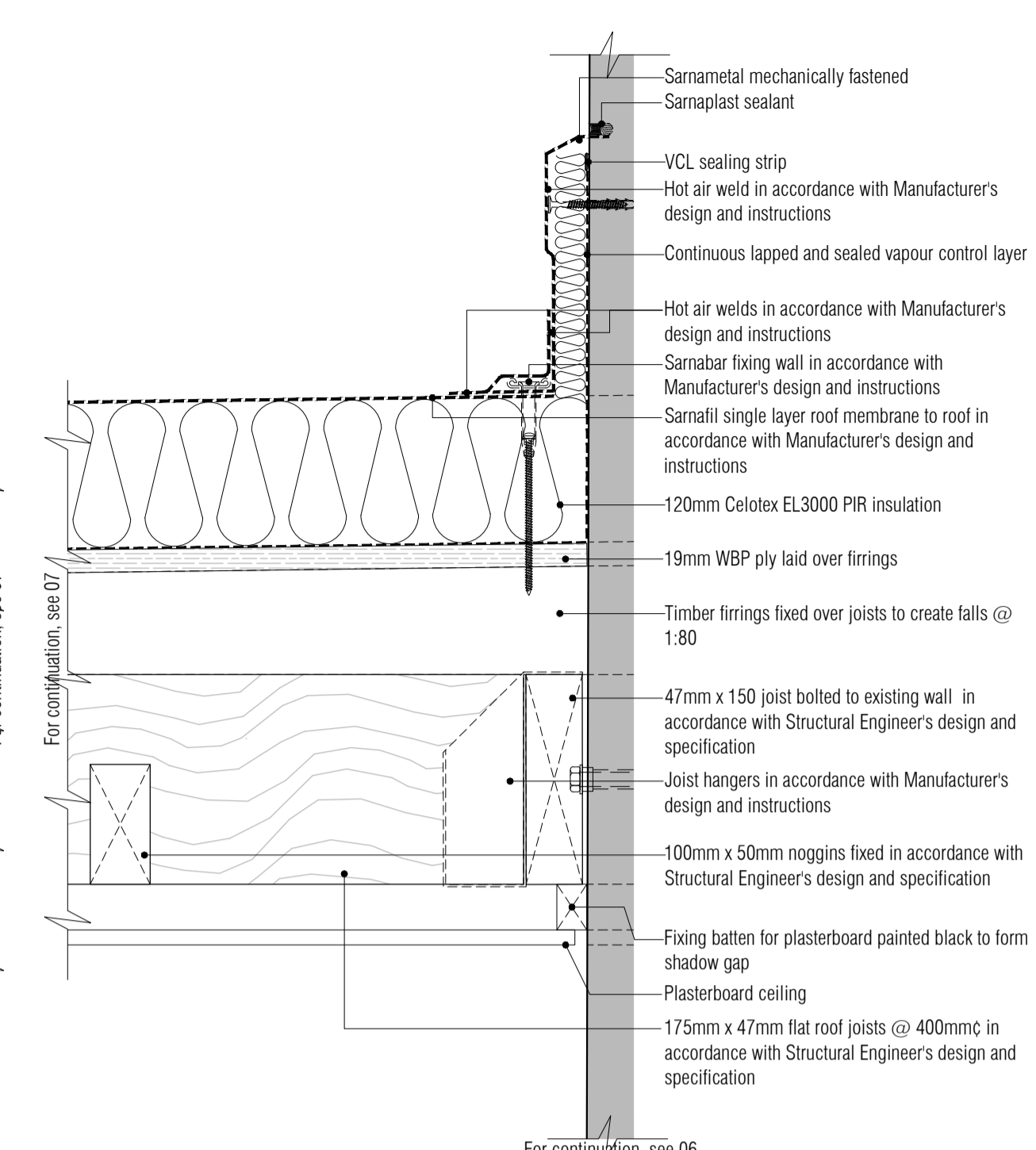
NB: All levels are approximate and are subject to further site investigation prior to construction. All discrepancies to be reported to FCG immediately



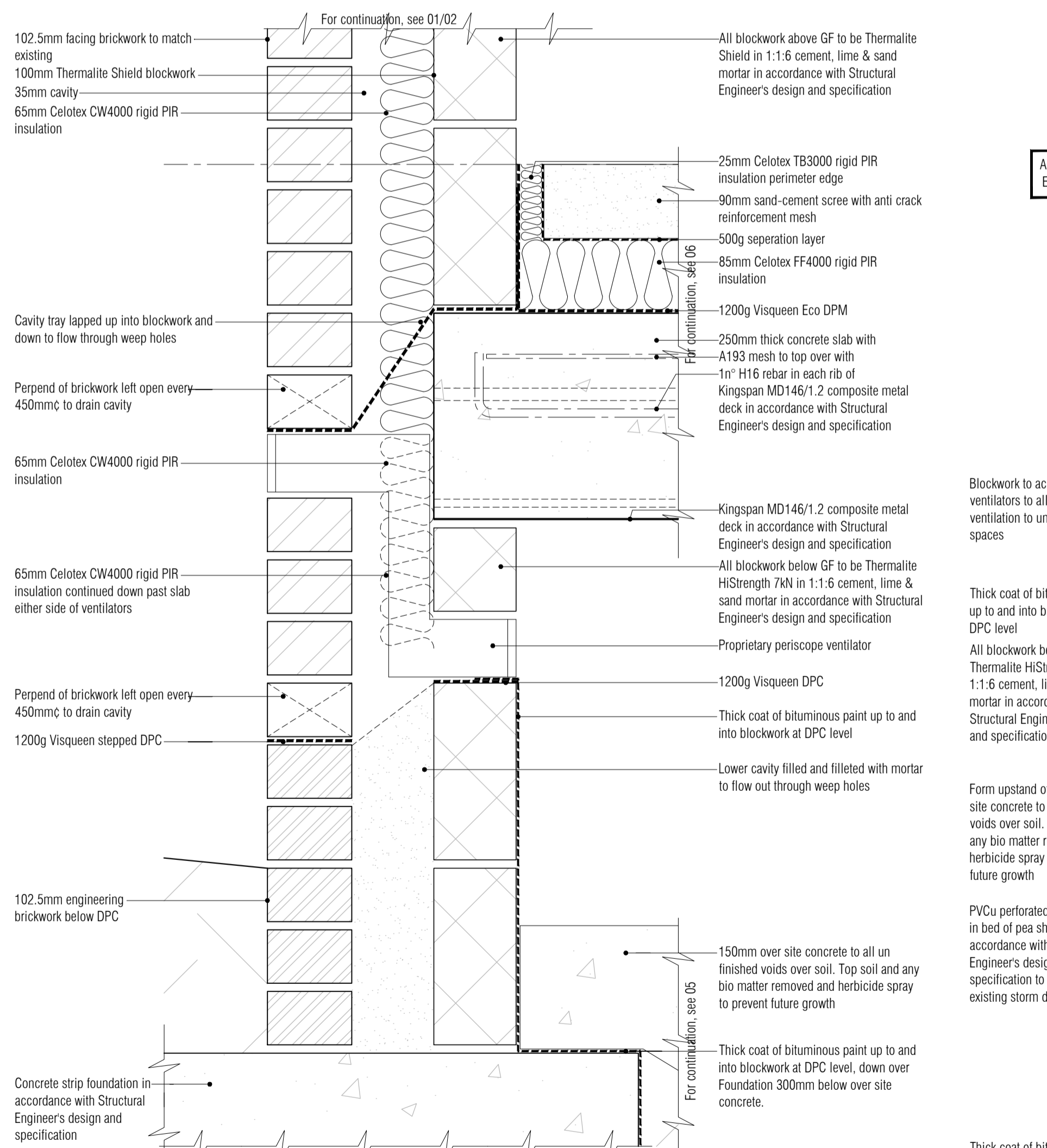
01 Typical Parapet & Gutter Detail
Scale: 1:5



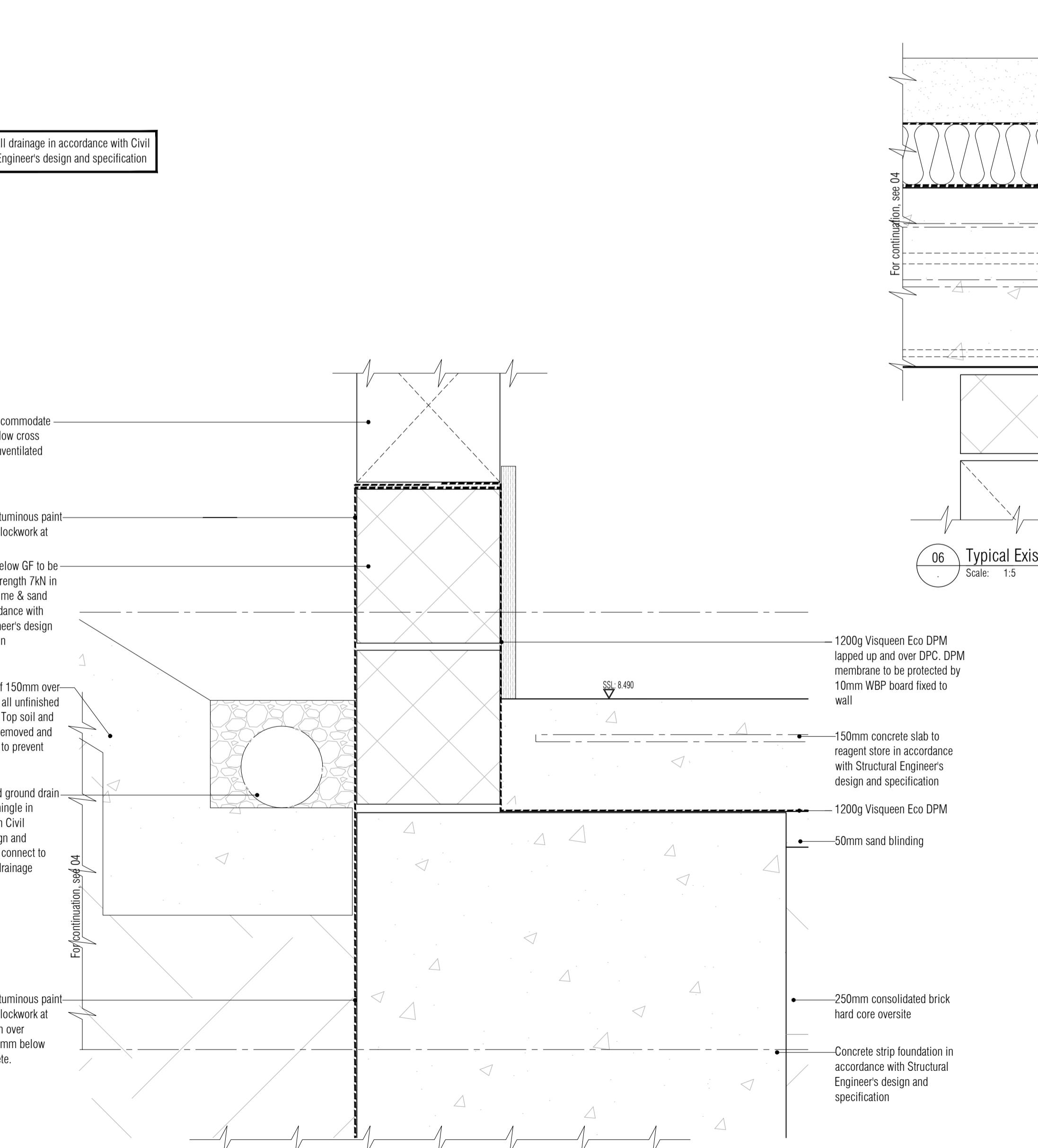
02 Typical Parapet Outlet & Hopper Detail
Scale: 1:5



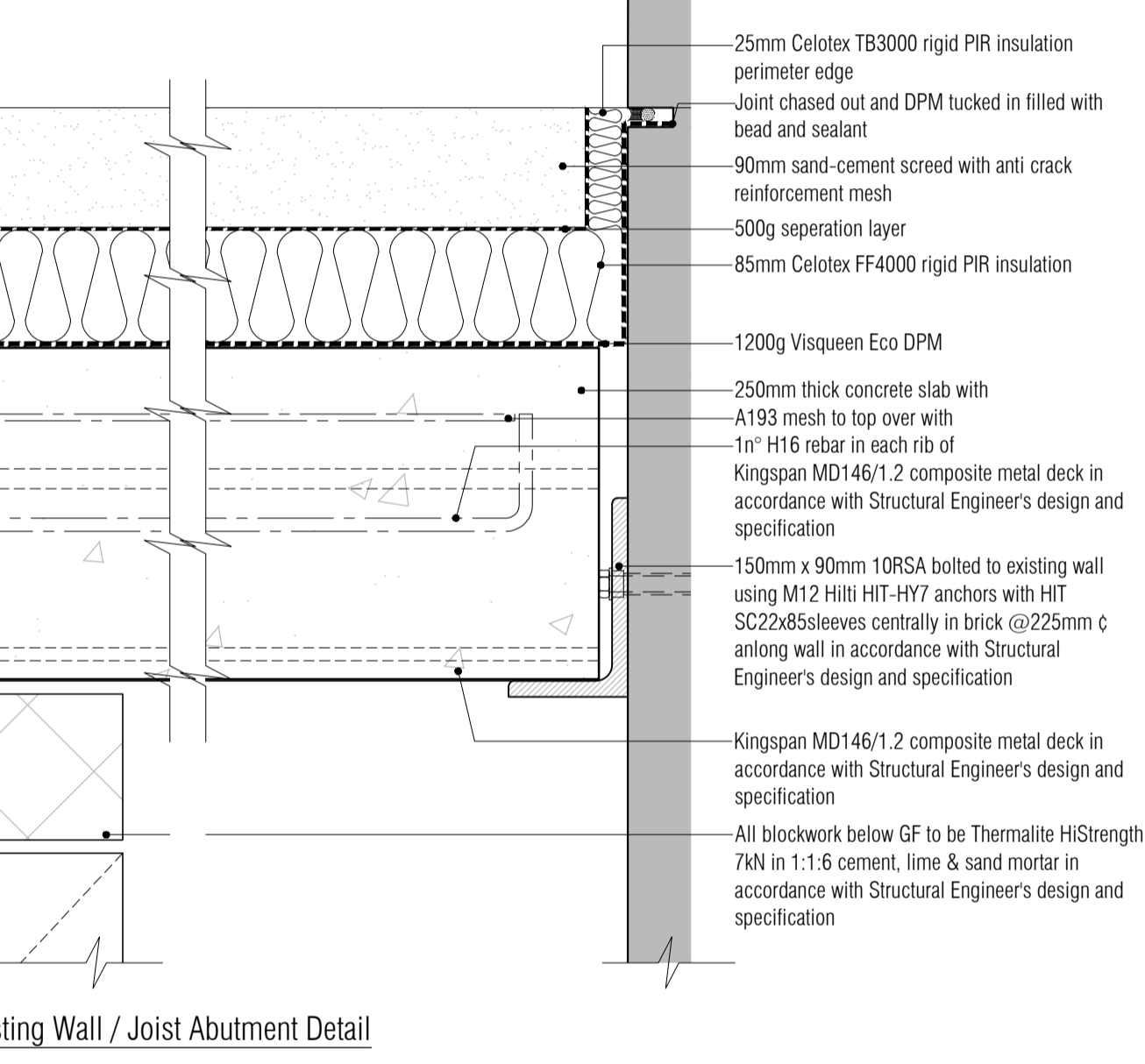
03 Typical Existing Wall / Joist Abutment Detail
Scale: 1:5



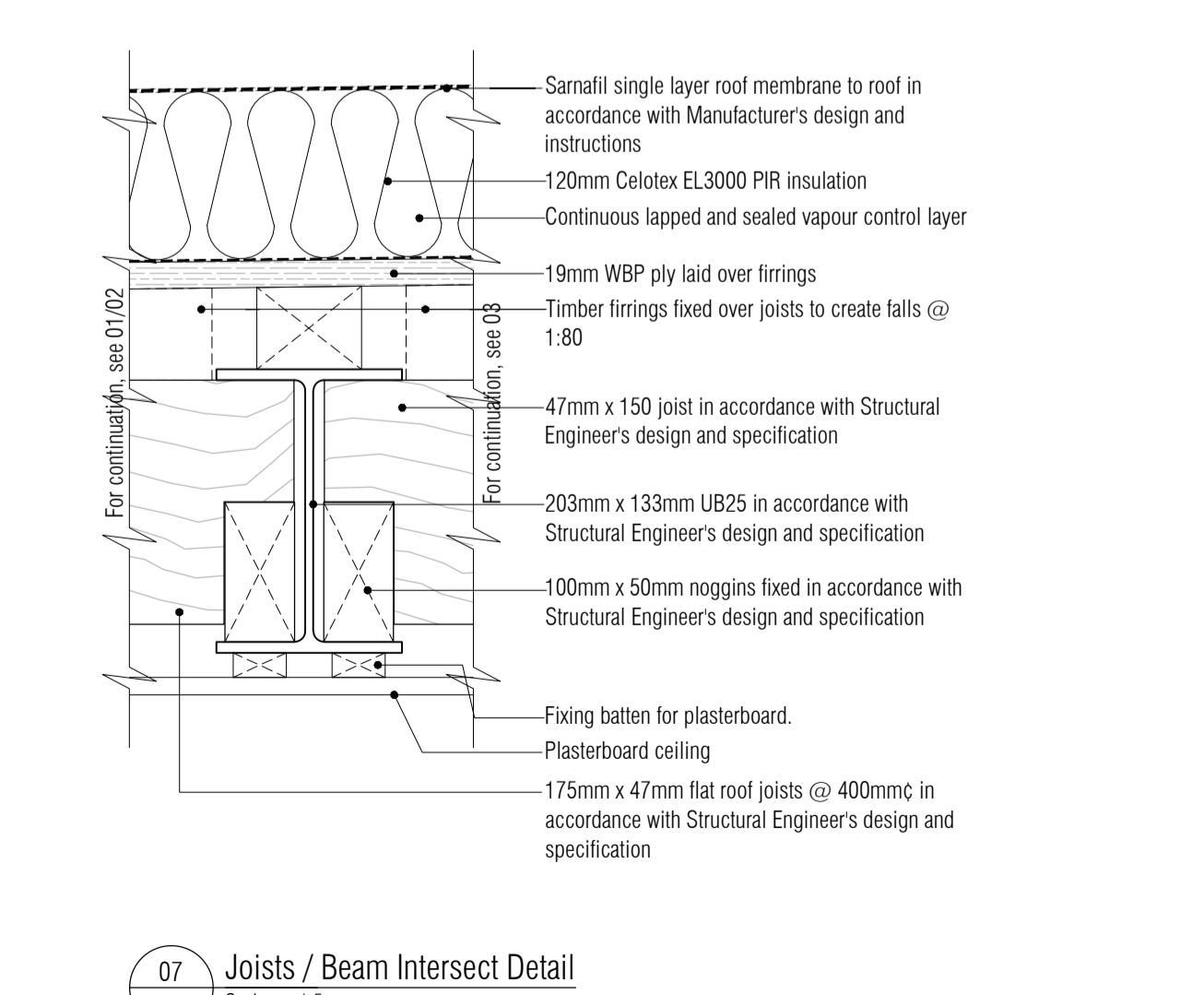
04 Typical Suspended Slab Wall Detail
Scale: 1:5



05 Typical Existing Wall / Joist Abutment Detail
Scale: 1:5

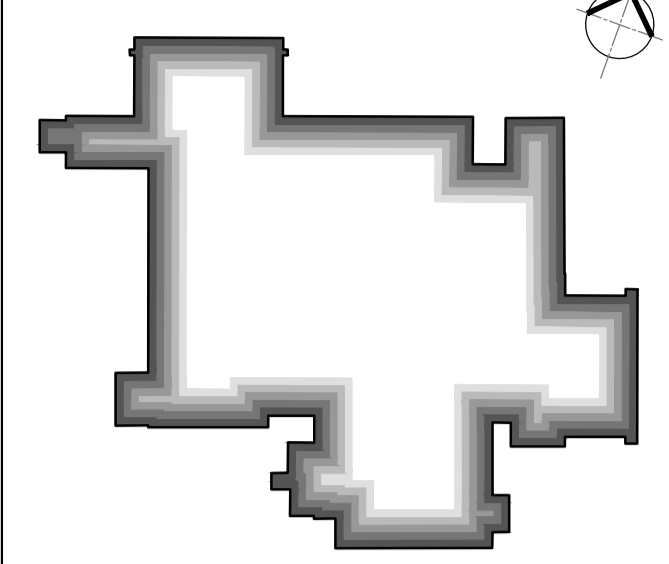


06 Typical Existing Wall / Joist Abutment Detail
Scale: 1:5



07 Joists / Beam Intersect Detail
Scale: 1:5

NOTES: Do not scale this drawing. All dimensions to be checked on site prior to commencement or manufacture. Key Plan (nts)



ISSUED FOR CONSTRUCTION

All details referenced in call outs supercede general arrangement or larger depictions.

| Rev | Date | By | CHK | Comment |
|-----|----------|-----|-----|----------------------------------|
| C2 | 05.07.12 | RKC | JAS | Slab level dropped, Details revd |
| C1 | 29.03.12 | RKC | JAS | Issued for CONSTRUCTION |



FRANKHAM
Frankham Consultancy Group Limited
 21 Pymms Road
 Hayward Heath RH16 3TP
 t 01444 444900 f 01444 455642
 enquiry@frankham.com
 www.frankham.com

Client
Mansell
 Contract N°: MC0269

Project Title
 Eastbourne & Worthing
 Crematoria
 Refurbishments and Alterations

Drawing Title
EASTBOURNE
 Eastbourne Crematorium
 Details

| | | |
|---------------------|--------------------|--------------------|
| Drawn by: RKC | Scale: 1:5@A1 | Date: 14.02.12 |
| Designed by: FCG | Checked by: JAS | Approved by: AC |

File Ref.: X:\FRANKHAM\2\JOB\01260 CREMATORIA\ARCH\406-409 DETAIL.DWG
 20.06.11 12:19:23
 Drawing No:
521260-A-420-E
 Rev:
C2

NB: All information based on supplied third party survey information. All discrepancies to be reported to FCG immediately upon discovery.