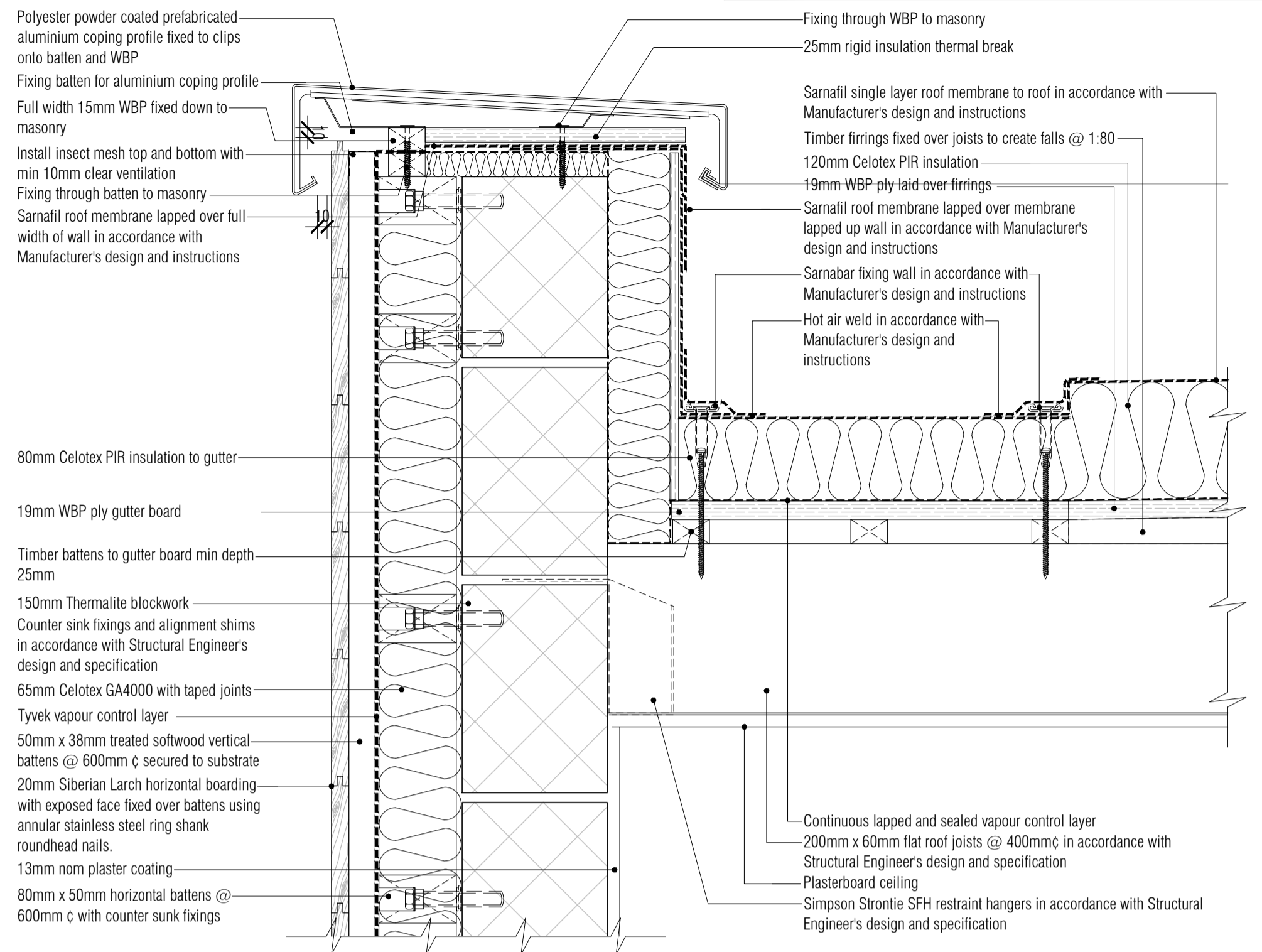
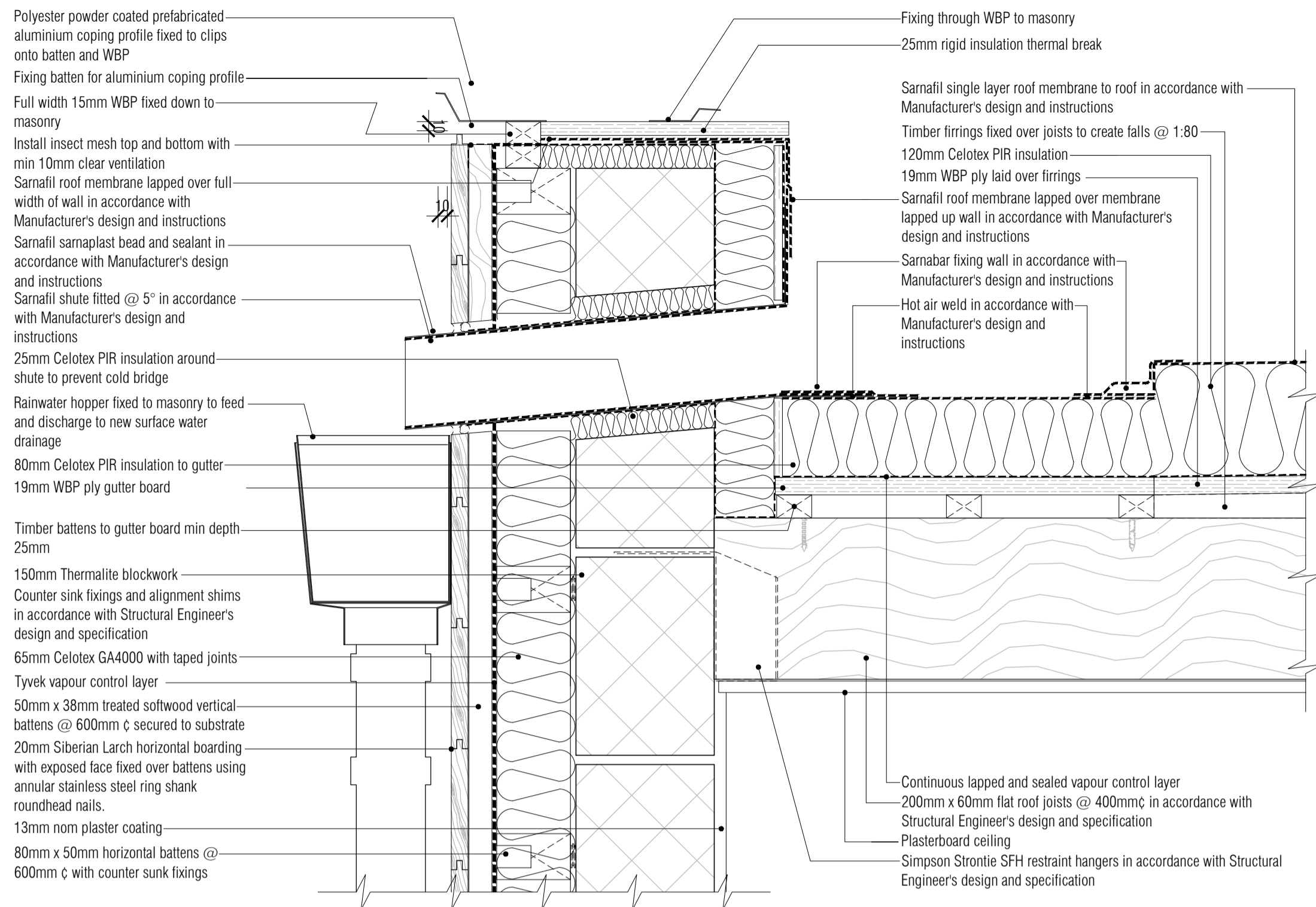


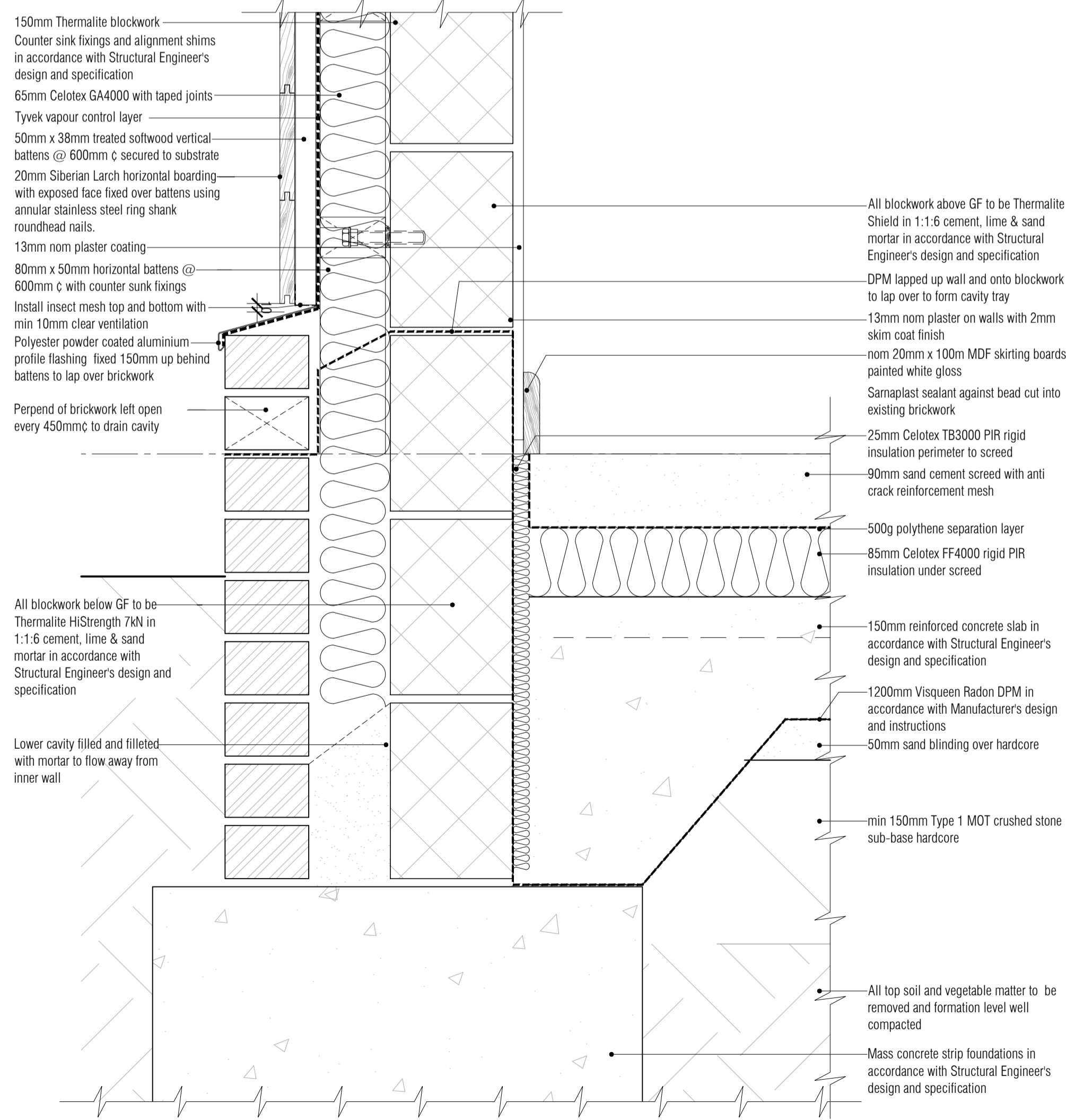
All Disabled and Ambulant Disabled facilities to comply with Approved Document Part M - Access to and use of buildings, Disability Discrimination Act 1995 and BS83000 as required



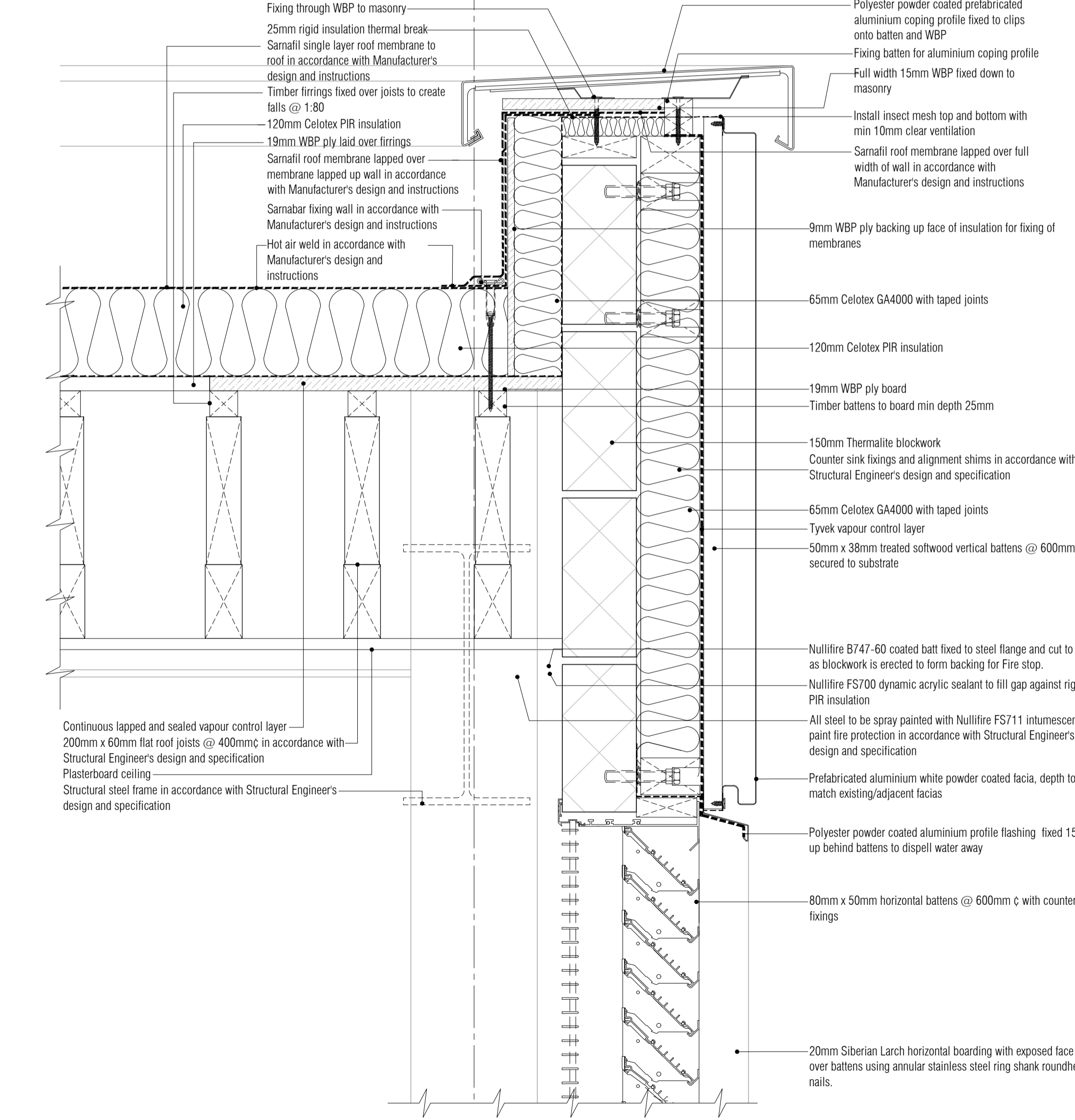
01 Typical Parapet & Gutter Detail
Scale: 1:5



02 Typical Parapet Outlet & Hopper Detail
Scale: 1:5

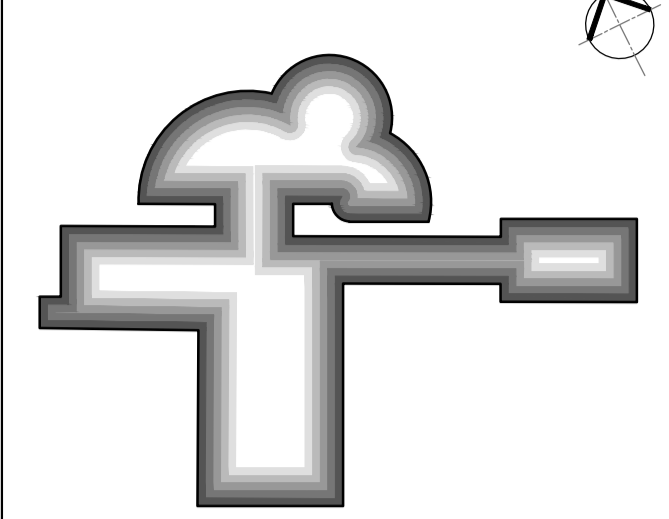


03 Typical Staff Room Wall Floor Interface Detail
Scale: 1:5



04 Typical Plant Room Wall Roof Interface Detail
Scale: 1:5

NOTES: Do not scale this drawing. All dimensions to be checked on site prior to commencement or manufacture. Key Plan (nts)



ISSUED FOR CONSTRUCTION

All details referenced in call outs supercede general arrangement or larger depictions.

Rev	Date	By	CHK	Comment
C3	21.06.12	RKC	JAS	Polythene DPM changed to Radon DPM
C2	19.06.12	RKC	JAS	Absence removed. Issued for Construction.
C1	23.04.12	RKC	JAS	Issued for CONSTRUCTION

BRINGING IDEAS TO LIFE

FRANKHAM

Frankham Consultancy Group Limited
21 Perrymount Road
Haywards Heath RH16 3TP
t 01444 444000 f 01444 455642
enquiries@frankham.com
www.frankham.com

Client

Mansell
Contract N°: Worthing

Project Title

Eastbourne & Worthing
Crematoria
Refurbishments and Alterations

Drawing Title

Worthing Crematorium
Detail

Drawn by: RKC	Scale: 1:5@A1	Date: 05.03.12
Designed by: FCG	Checked by: JAS	Approved by: AC

File Ref: X:\FRANKHAM\2-25011210 CREMATORIA\ARCH\450-DTAL-DCHM010	20.06.11.12.20.04
Drawing No: 521260-A-425-W	Rev: C3

NB: All information based on supplied third party survey information. All discrepancies to be reported to FCG immediately upon discovery.