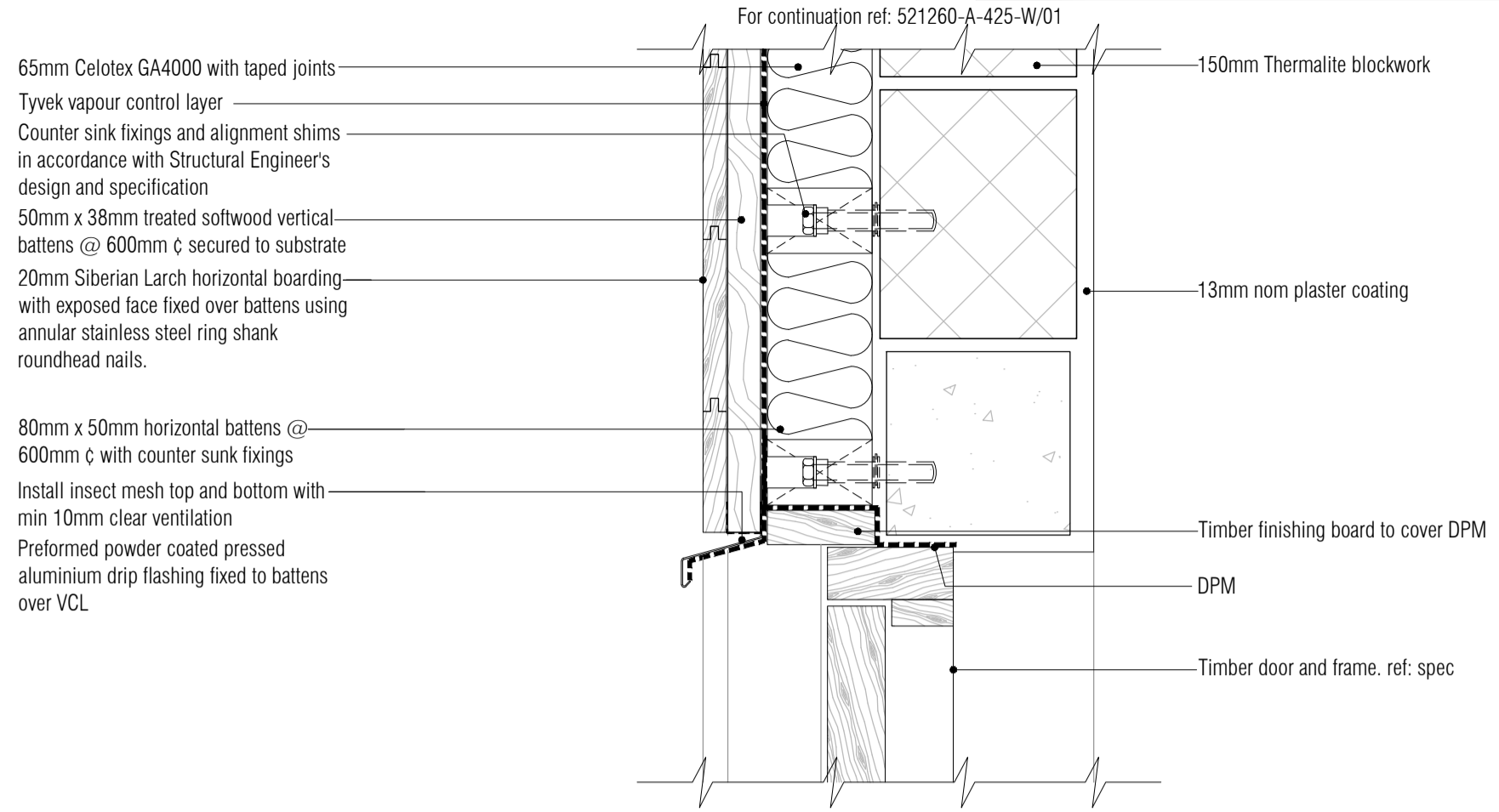
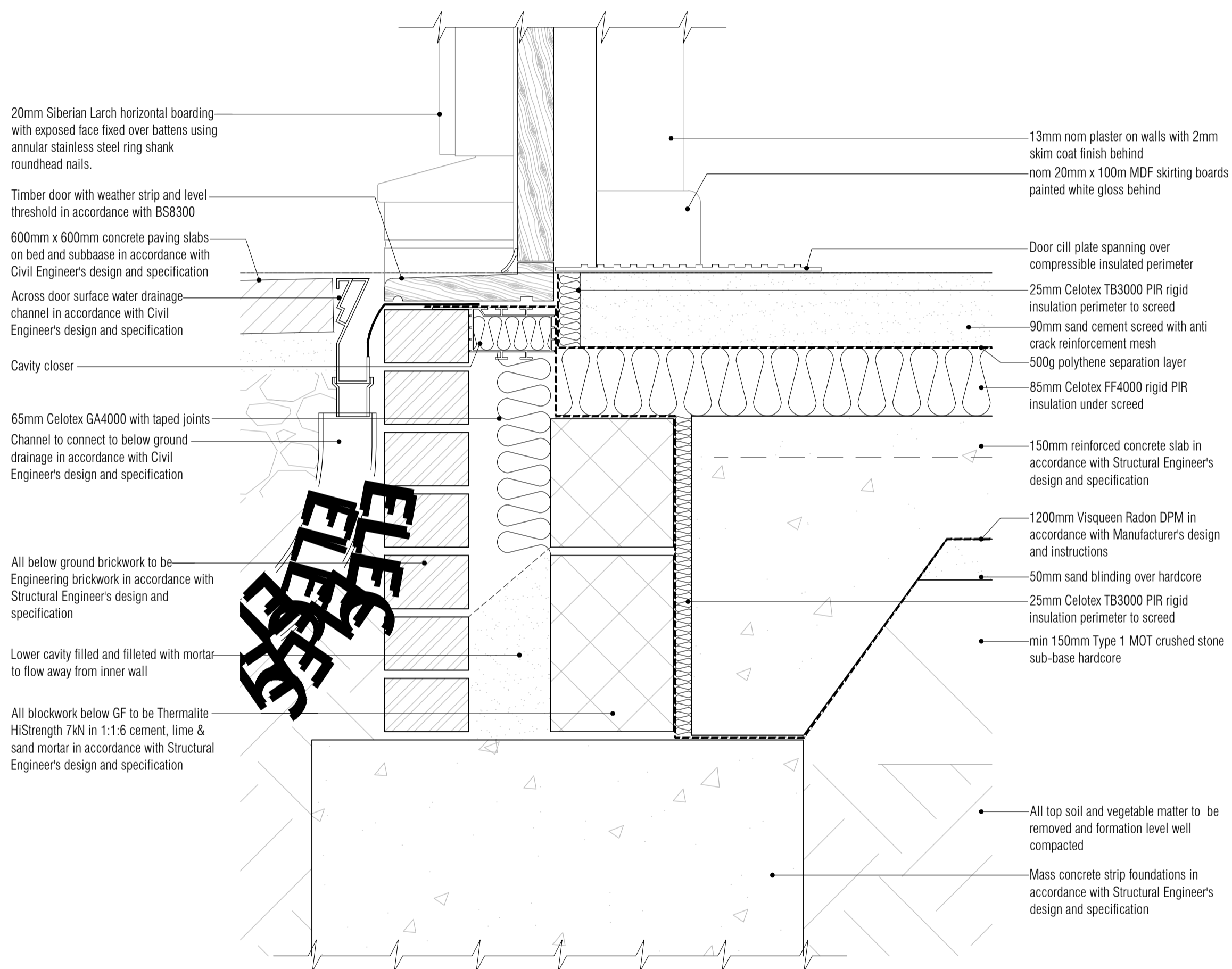


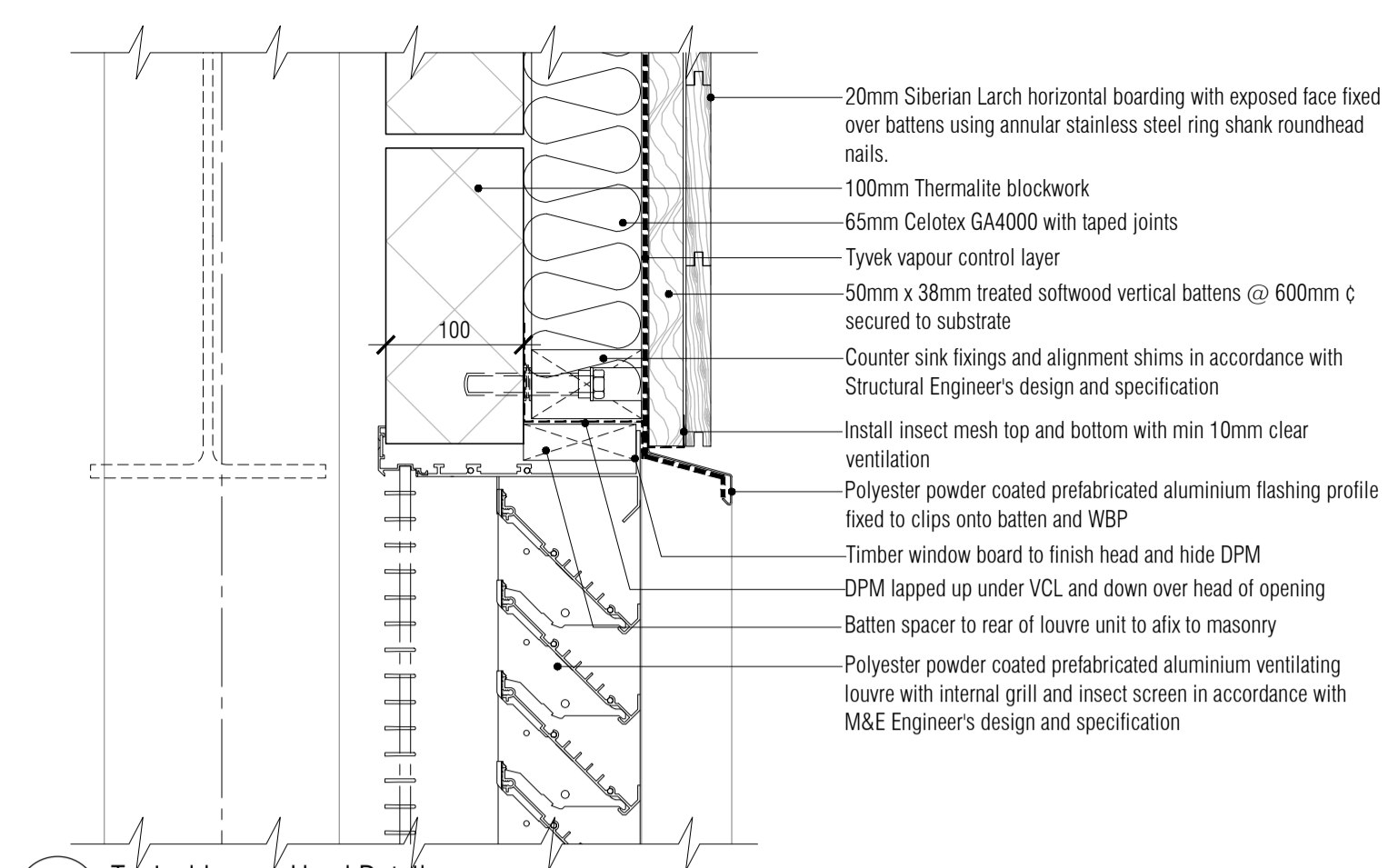
All Disabled and Ambulant Disabled facilities to comply with Approved Document Part M - Access to and use of buildings, Disability Discrimination Act 1995 and BS8300 as required



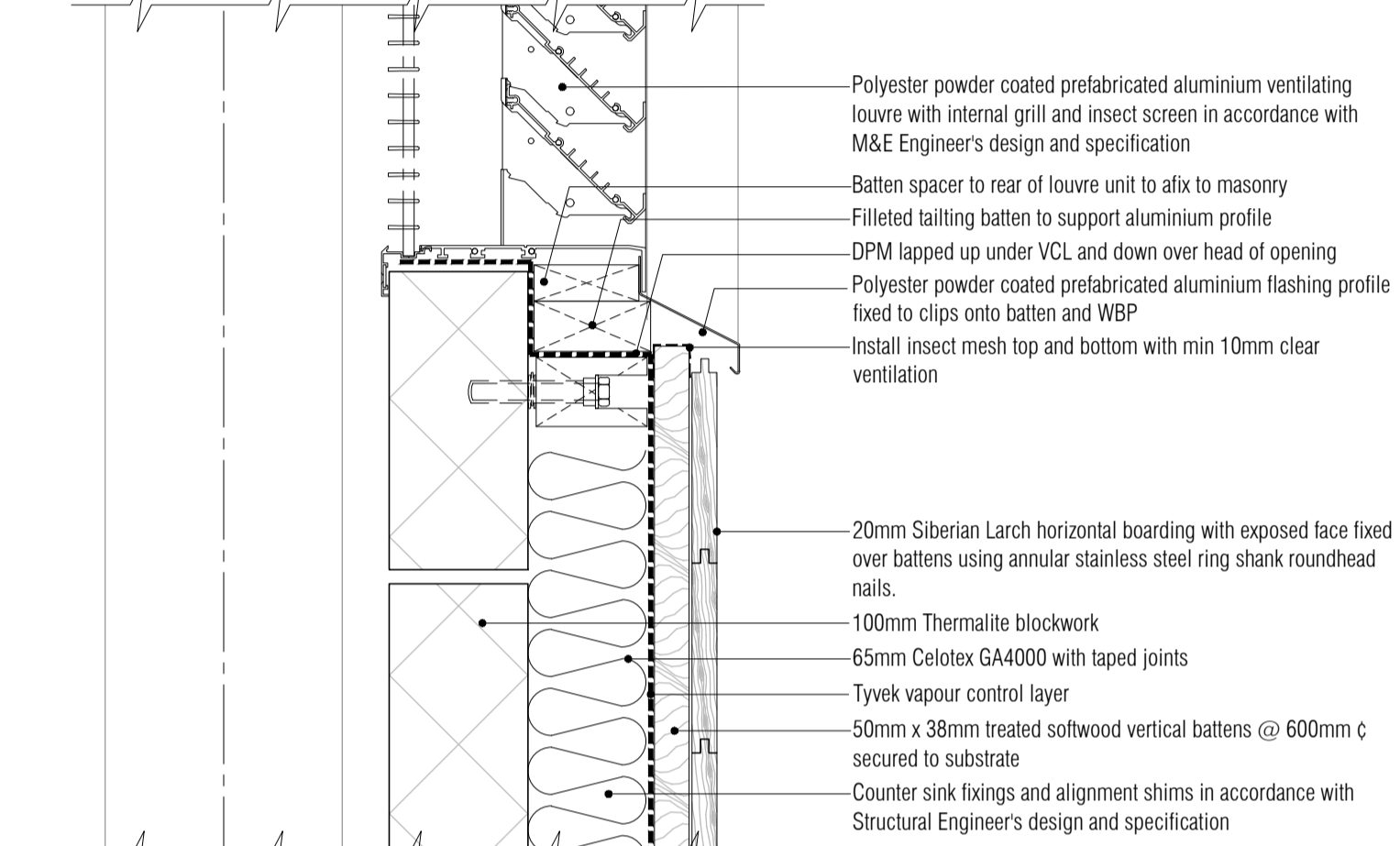
01 Typical Door Head Detail
Scale: 1:5



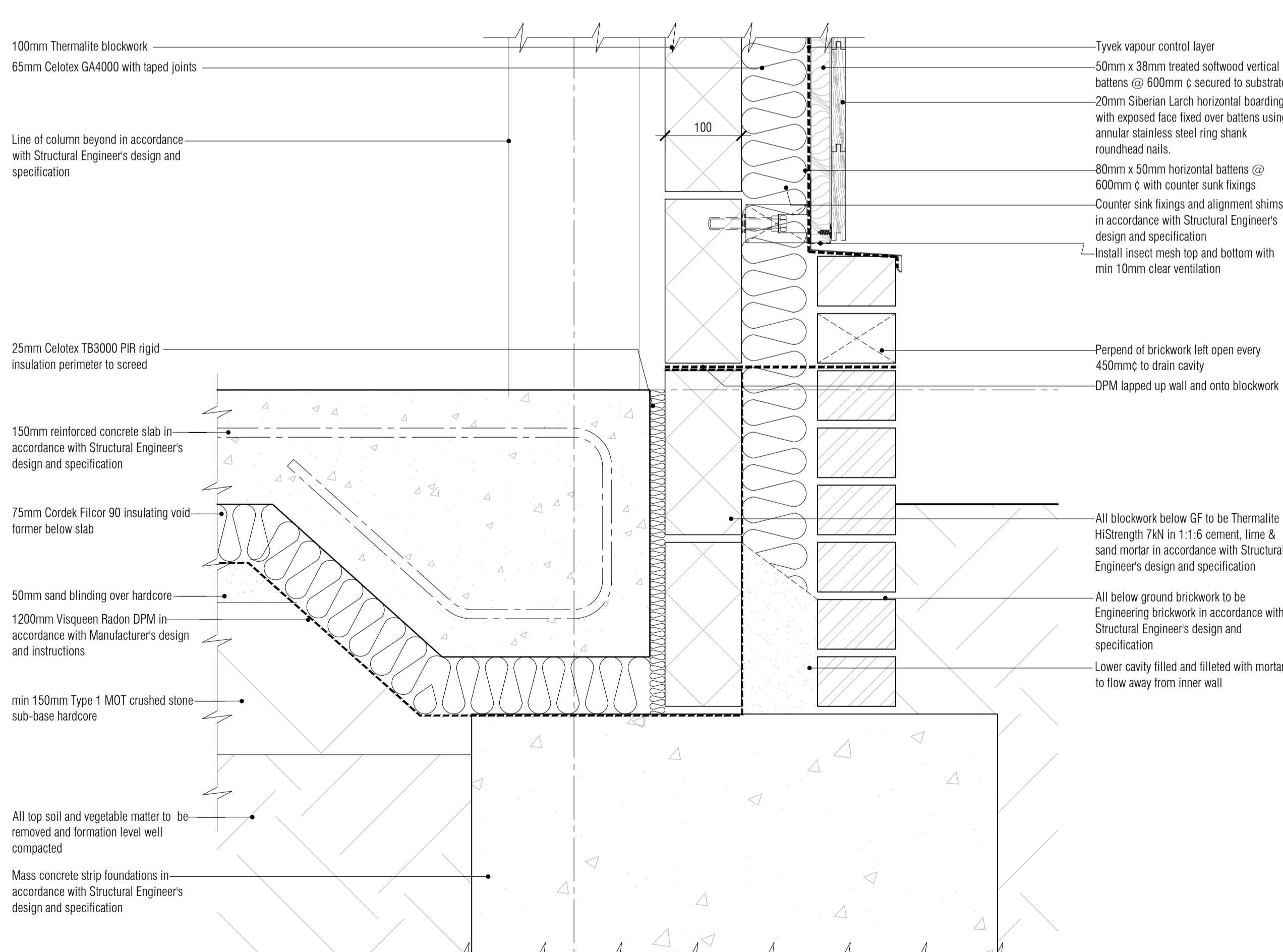
02 Typical Level Threshold Door Cill Detail
Scale: 1:5



03 Typical Louvre Head Detail
Scale: 1:5

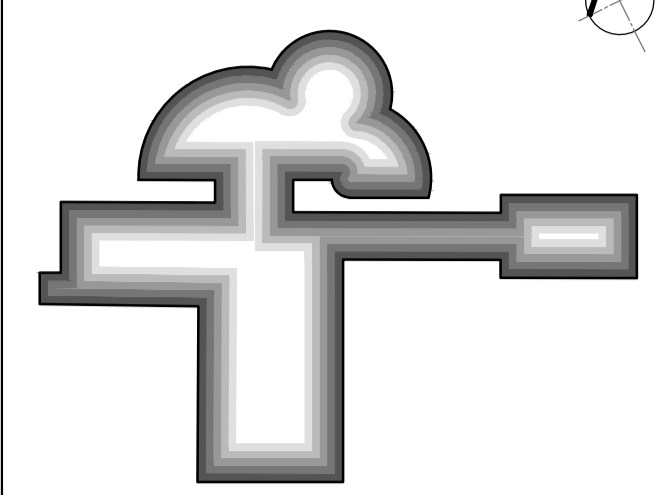


04 Typical Louvre Cill Detail
Scale: 1:5



05 Typical Plant Room Floor Detail
Scale: 1:5

NOTES: Do not scale this drawing. All dimensions to be checked on site prior to commencement or manufacture.
Key Plan (nts)



ISSUED FOR CONSTRUCTION

All details referenced in call outs supercede general arrangement or larger depictions.

Rev	Date	By	Chk	Comment
C2	09.07.12	RKC	JAS	Issued for Construction
P5	21.06.12	RKC	JAS	Polythene DPM changed to Radon DPM
P4	01.06.12	RKC	JAS	Issued for Stage F
P3	18.05.12	RKC	JAS	Details rev'd per CC3
T1	23.04.12	RKC	JAS	Issued for CONSTRUCTION

BRINGING IDEAS TO LIFE

Frankham Consultancy Group Limited
21 Perrymount Road
Haywards Heath RH16 3TP
t 01444 444900 f 01444 455642
enquire@frankham.com
www.frankham.com

Client

Contract N°: Worthing

Project Title
Eastbourne & Worthing
Crematoria
Refurbishments and Alterations

Drawing Title

Worthing Crematorium
Detail

Drawn by: RKC	Scale: 1:5@A1	Date: 08.03.12
Designed by: FCG	Checked by: JAS	Approved by: AC

File Ref.: X:\FRANKHAM\2-25812740 CREMATORIA\ARCH\449-DETAIL-05-REVISED.rvt
20.06.11 12:20:11

Drawing No. 521260-A-426-W	Rev. C2
-------------------------------	------------

NB: All information based on supplied third party survey information.
All discrepancies to be reported to FCG immediately upon discovery.