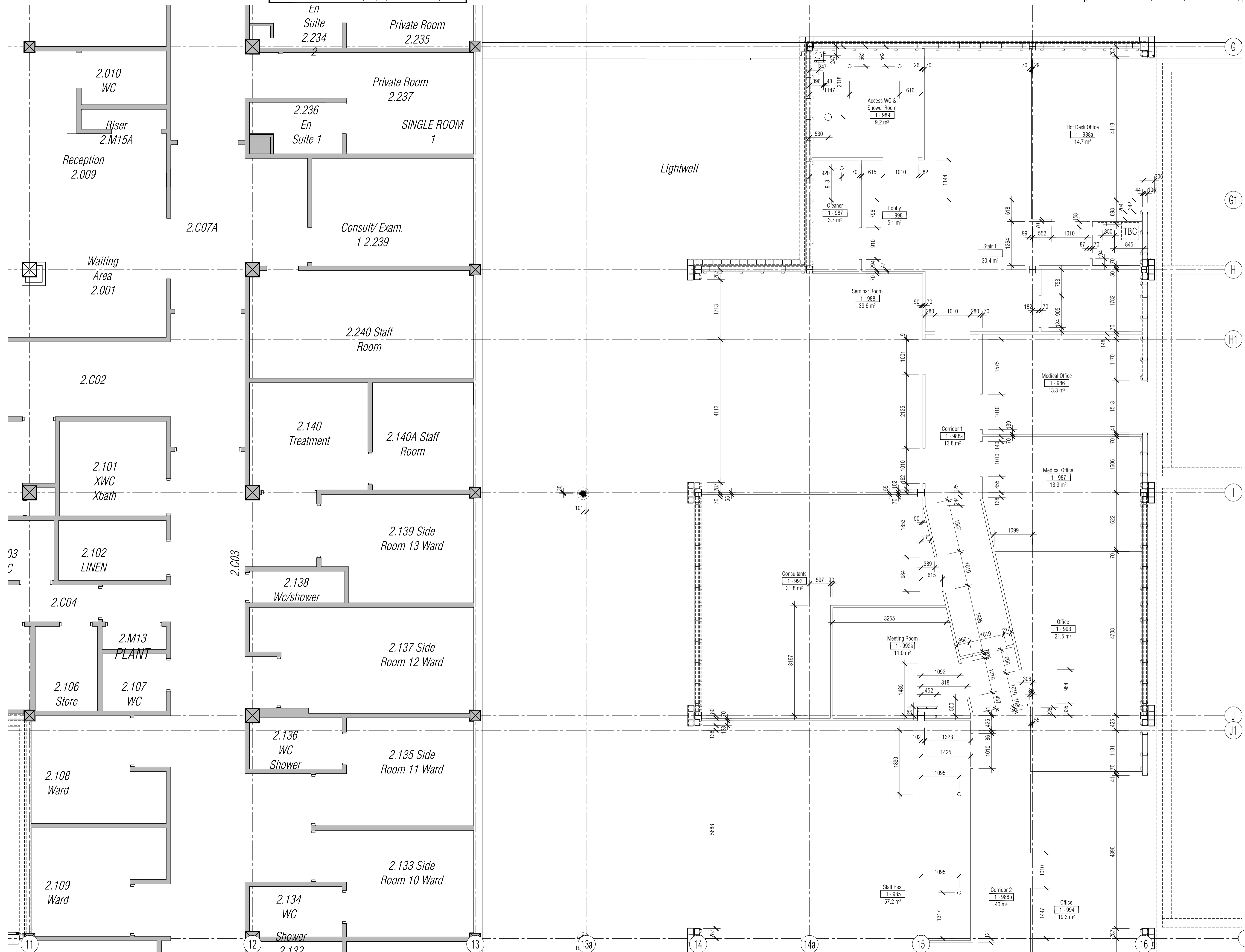
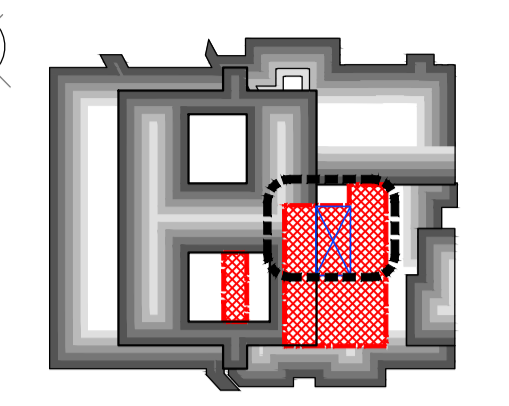


All Disabled and Ambulant Disabled facilities to comply with Approved Document Part M - "Access to and use of buildings", Equality Act and BS83000 as required.

NB: All levels are approximate and are subject to further site investigation prior to construction. All discrepancies to be reported to FCG immediately



NOTES: Do not scale this drawing. All dimensions to be checked on site prior to commencement or manufacture. Key Plan (nts)



Typical General Arrangement DWG N° Key
 Stage: 1-Existing, 2-Demolition
 3--Proposals
 Job N°: 621717-A-121-0
 Discipline: Level N°
 Sheet series N°:
 0= Extents
 1-5= Zones
 Dwg Series

PRELIMINARY ISSUE

All details referenced in call outs supersede general arrangement or larger depictions.

Rev	Date	By	CHK	Comment
P1	12.06.20	RKC	AGC	Preliminary issue for information

BRINGING IDEAS TO LIFE

FRANKHAM

Frankham Consultancy Group Limited
 21 Perryman Road
 Haywards Heath, RH16 3TP
 t 01444 444900 f 01444 455642
 enquiry@frankham.com
 www.frankham.com

Client
St George's Healthcare NHS Trust

Project Title
 General Intensive Care Unit Extension
 St. James Wing
 St. Georges Hospital
 London

Drawing Title
 Proposed
 Second Floor
 Setting Out Plan
 North East Quadrant

Drawn by: RKC	Scale: 1:50@A1	Date: 03.10.13
Designed by: FCG	Checked by: MDK	Approved by: AGC

File Ref: X:\FRANKHAM\2013\11\02\ARCH\100-04-130717-A-121-0-01.dwg 20.06.12:14:59.03

Drawing No. **521717-A-132-2** Rev. **P1**

NB: All information based on supplied third party survey information. All discrepancies to be reported to FCG immediately upon discovery.

All Mechanical & Electrical and Structural information shown indicative only. Please refer to Mechanical & Electrical and Structural documentation.