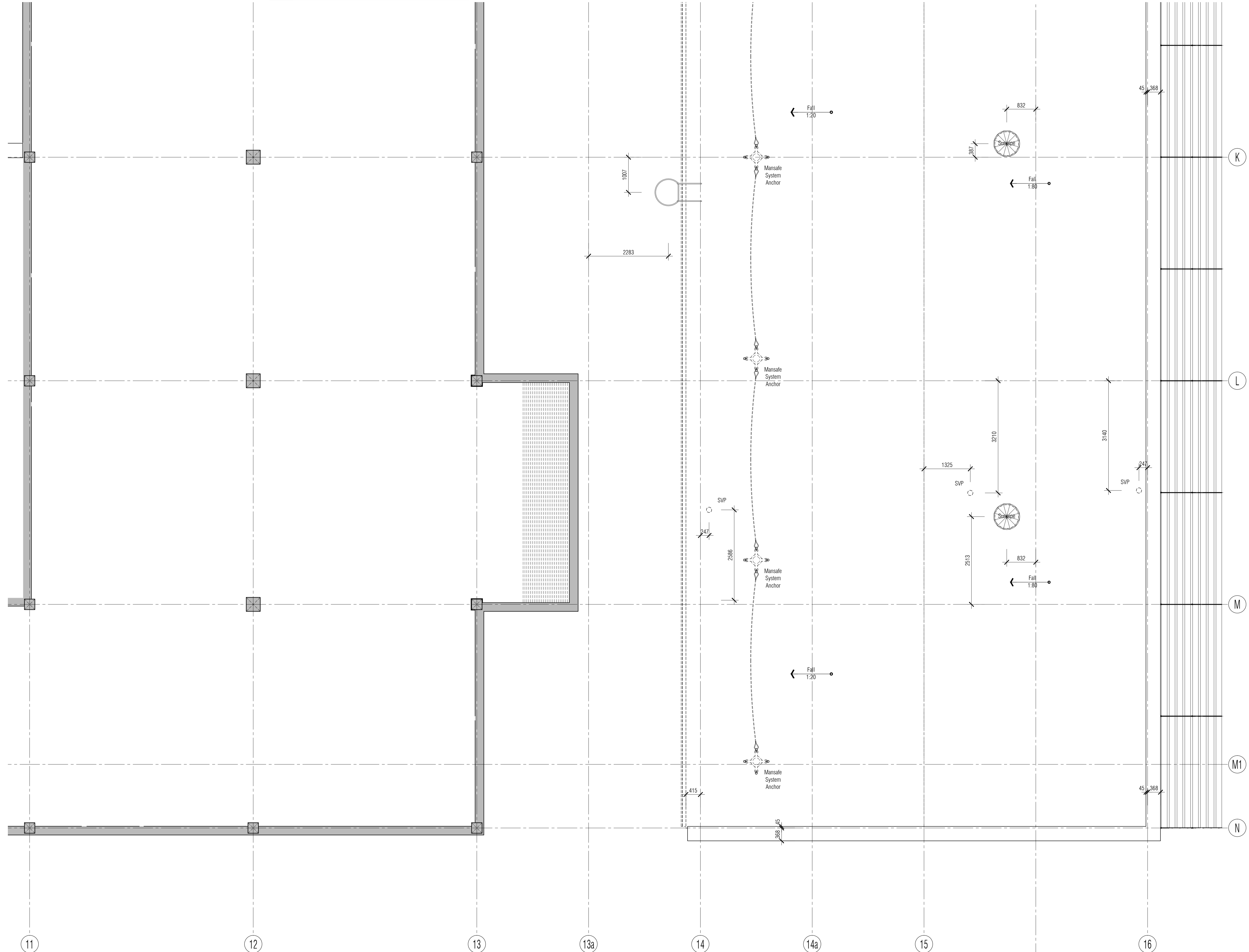
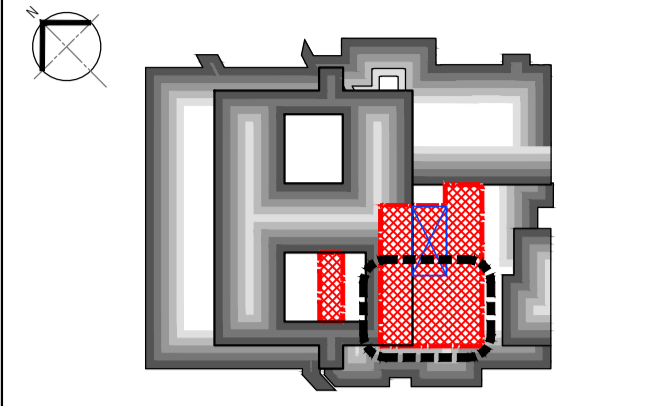


All Disabled and Ambulant Disabled facilities to comply with Approved Document Part M - "Access to and use of buildings", Equality Act and BS83000 as required.

NB: All levels are approximate and are subject to further site investigation prior to construction. All discrepancies to be reported to FCG immediately.



NOTES: Do not scale this drawing. All dimensions to be checked on site prior to commencement or manufacture. Key Plan (nts)



Typical General Arrangement DWG N° Key  
 Stage: 1-Existing, 2-Demolition  
 3+-Proposals  
 Job N°: 521717-A-121-0  
 Discipline: Level N°  
 Sheet series N°:  
 0= Extents  
 1-5= Zones  
 Dwg Series

**PRELIMINARY ISSUE**

Rev	Date	By	CHK	Comment
P1	12.06.20	RKC	AGC	Preliminary Issue for Information

BRINGING IDEAS TO LIFE

**FRANKHAM**

Frankham Consultancy Group Limited  
 21 Perrymount Road  
 Haywardes Heath RH16 3TP  
 t 01444 444900 f 01444 455642  
 enquiry@frankham.com  
 www.frankham.com

Client  
**St George's Healthcare NHS Trust**

Project Title  
 General Intensive Care Unit Extension  
 St. James Wing  
 St. Georges Hospital  
 London

Drawing Title  
 Proposed  
 Third Floor / Roof  
 Setting Out Plan  
 South East Quadrant

Drawn by: RKC	Scale: 1:50@A1	Date: 03.10.13
Designed by: FCG	Checked by: MDK	Approved by: AGC

File Ref.: X:\FRANKHAM\2-05612117\02\ARCH\100-04- 20.06.12:15:09.04  
 521717-A-133-4 Rev. P1

NB: All information based on supplied third party survey information. All discrepancies to be reported to FCG immediately upon discovery.

All Mechanical & Electrical and Structural information shown indicative only. Please refer to Mechanical & Electrical and Structural documentation.