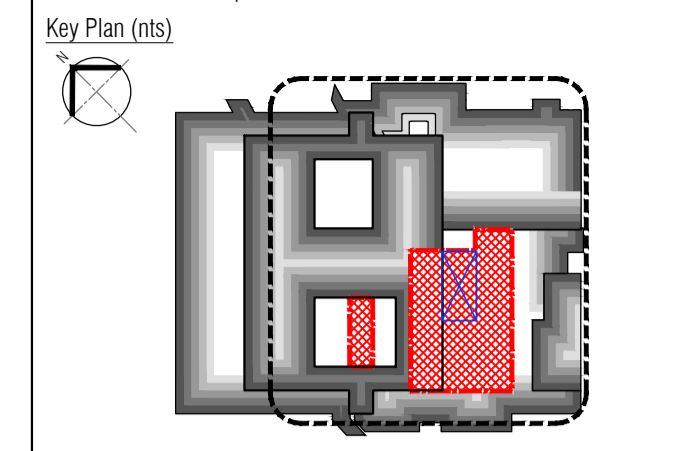


All partition information, details and specifications subject to confirmation by Drywall Contractor and are to be in accordance with Manufacturer's design and instructions. Architect to be notified immediately upon discovery of variation to the details shown.

NB: All levels are approximate and are subject to further site investigation prior to construction. All discrepancies to be reported to FCG immediately.



NOTES: Do not scale this drawing. All dimensions to be checked on site prior to commencement or manufacture. Key Plan (nts)



Partition Strategy Key
To be read in conjunction with
Wall Types dwgs 521717-A-530 - 535 and
Partition Strategy dwgs 521717-A-160 - 165 and
Partition Detail dwgs 521717-A-500 - 509

Internal Walls

Wall Type A	WA	WA	WA	WA
Wall Type B	WB	WB	WB	WB
Wall Type C	WC	WC	WC	WC
Wall Type D	WD	WD	WD	WD
Wall Type E	WE	WE	WE	WE
Wall Type F	WF	WF	WF	WF
Wall Type G	WG	WG	WG	WG
Wall Type H	WH	WH	WH	WH
Wall Type I	WI	WI	WI	WI
Wall Type J	WJ	WJ	WJ	WJ
Wall Type K	WK	WK	WK	WK
Wall Type L	WL	WL	WL	WL
Wall Type M	WM	WM	WM	WM
Wall Type N	WN	WN	WN	WN
Wall Type O	WO	WO	WO	WO
Wall Type P	WP	WP	WP	WP

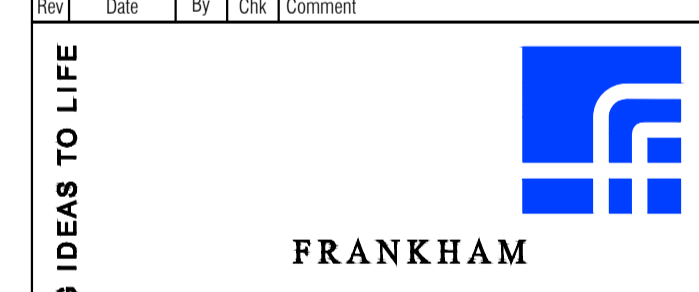
External Walls

Wall Type X	WX	WX	WX	WX
Wall Type Y	WY	WY	WY	WY
Wall Type Z	WZ	WZ	WZ	WZ

Typical General Arrangement DWG N° Key
Stage: 1-Existing, 2-Demolition
3-Proposals
Job N°: 521717-A-121-0
Discipline: Level N°
Sheet series N°:
0 = Extents
1-5 = Zones
Dwg Series

BUILDING REGS ISSUE

Rev	Date	By	Chk	Comment
P1	24.03.14	RKC	AGC	Issued for Building Regulations Approval



Frankham Consultancy Group Limited
21 Pymms Road
Haywards Heath RH16 3TP
t 01444 444900 f 01444 455642
enquiries@frankham.com
www.frankham.com

Client
St George's Healthcare NHS Trust

Project Title
General Intensive Care Unit Extension
St. James Wing
St. Georges Hospital
London

Drawing Title
Proposed
Ground Floor
Partition Strategy
Plan

Drawn by:	Scale:	Date:
RKC	1:100@A1	17.03.14
Designed by:	Checked by:	Approved by:
FCG	MDK	AGC

File Ref: 521717-A-160-005 - 29/01/2014
20.06.12:15:32:14
Drawing No.
521717-A-160
Rev.
P1

NB: All information based on supplied third party survey information. All discrepancies to be reported to FCG immediately upon discovery.

All Mechanical & Electrical and Structural information shown indicative only. Please refer to Mechanical & Electrical and Structural documentation.