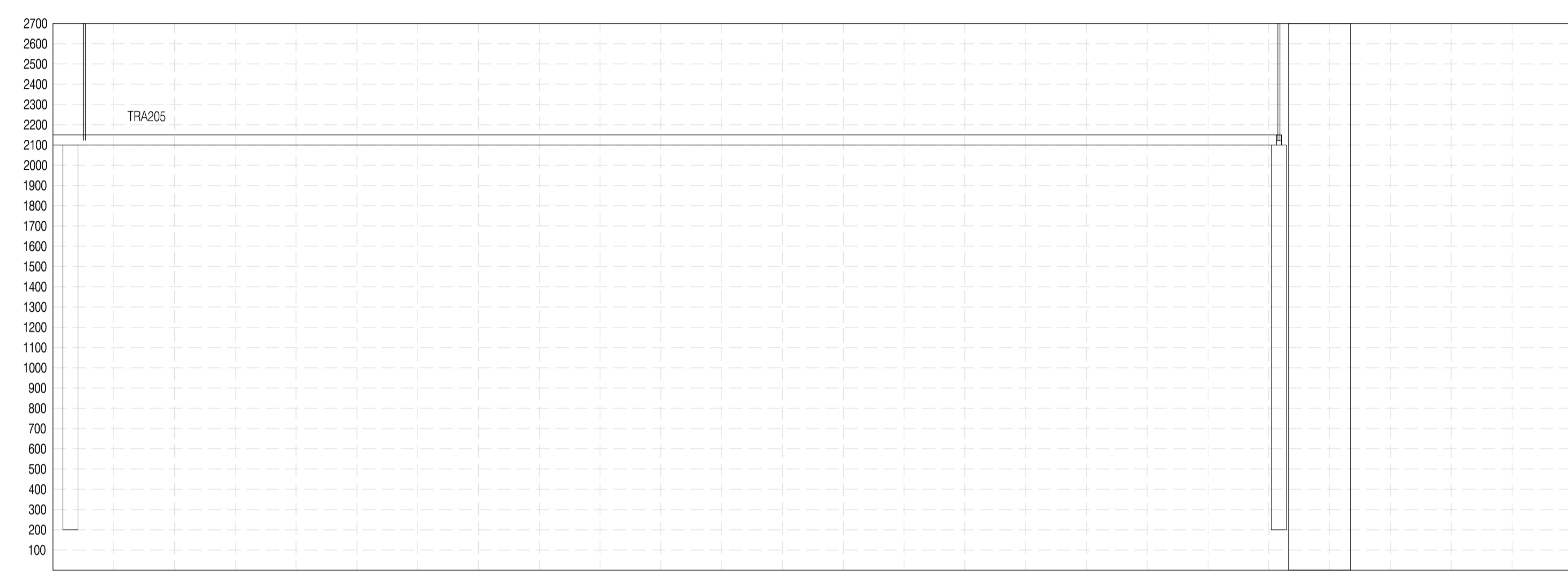
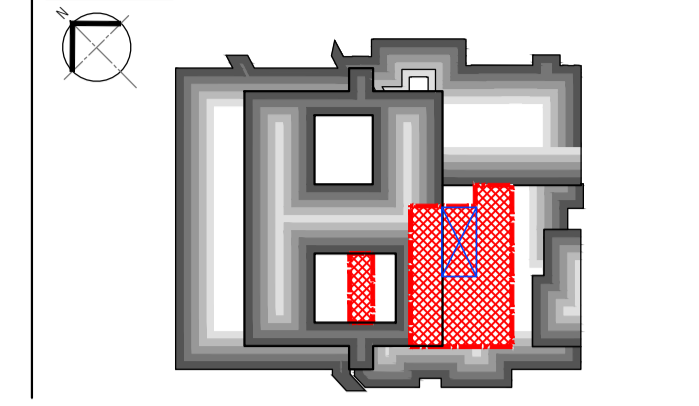
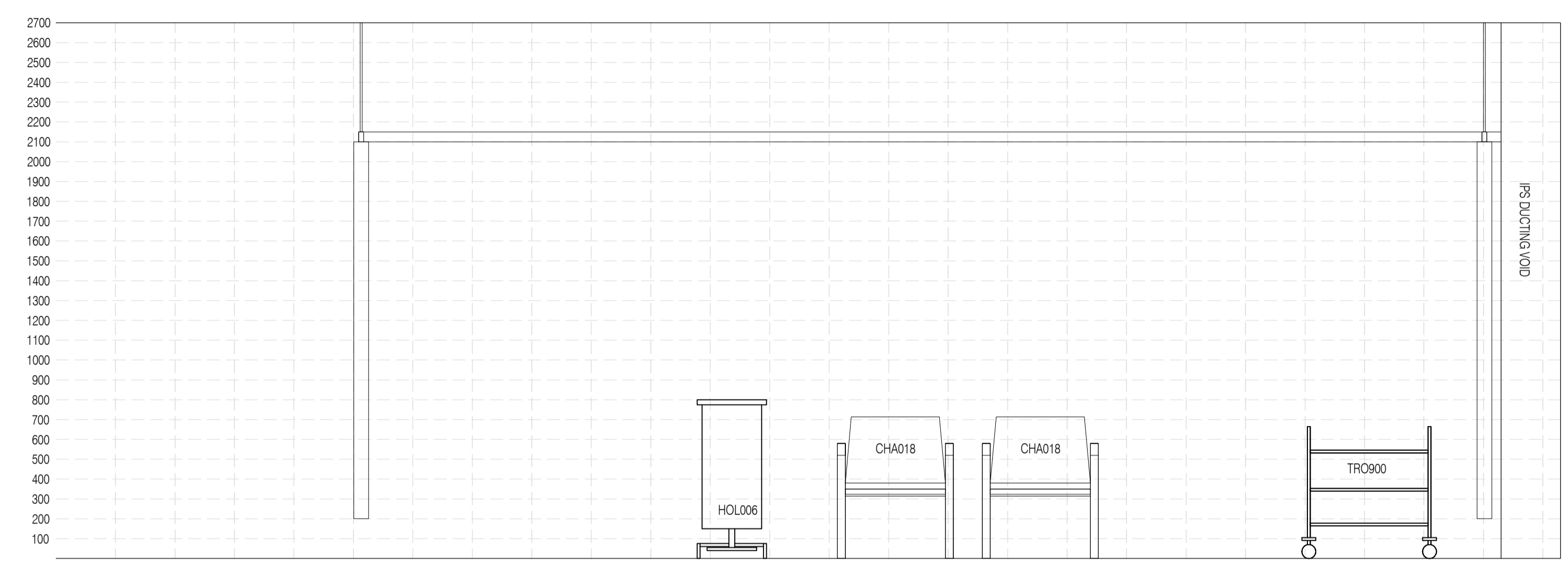


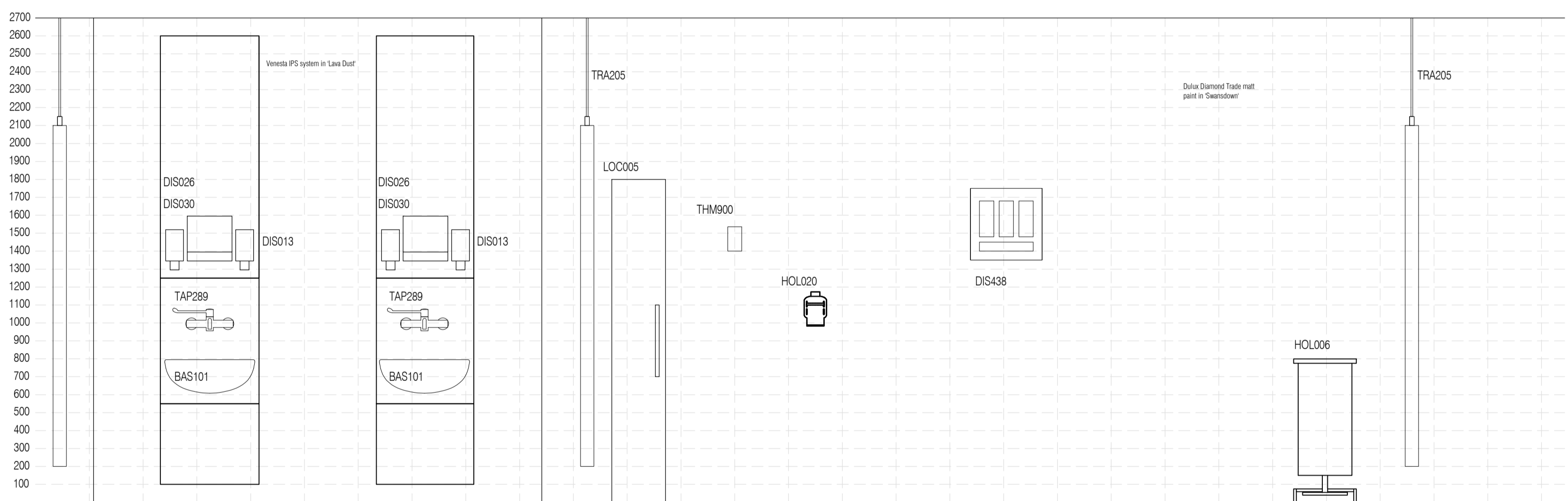
NOTES: Do not scale this drawing. All dimensions to be checked on site prior to commencement or manufacture.  
Key Plan (m/s)



02 Elevation A  
Scale: 1:20



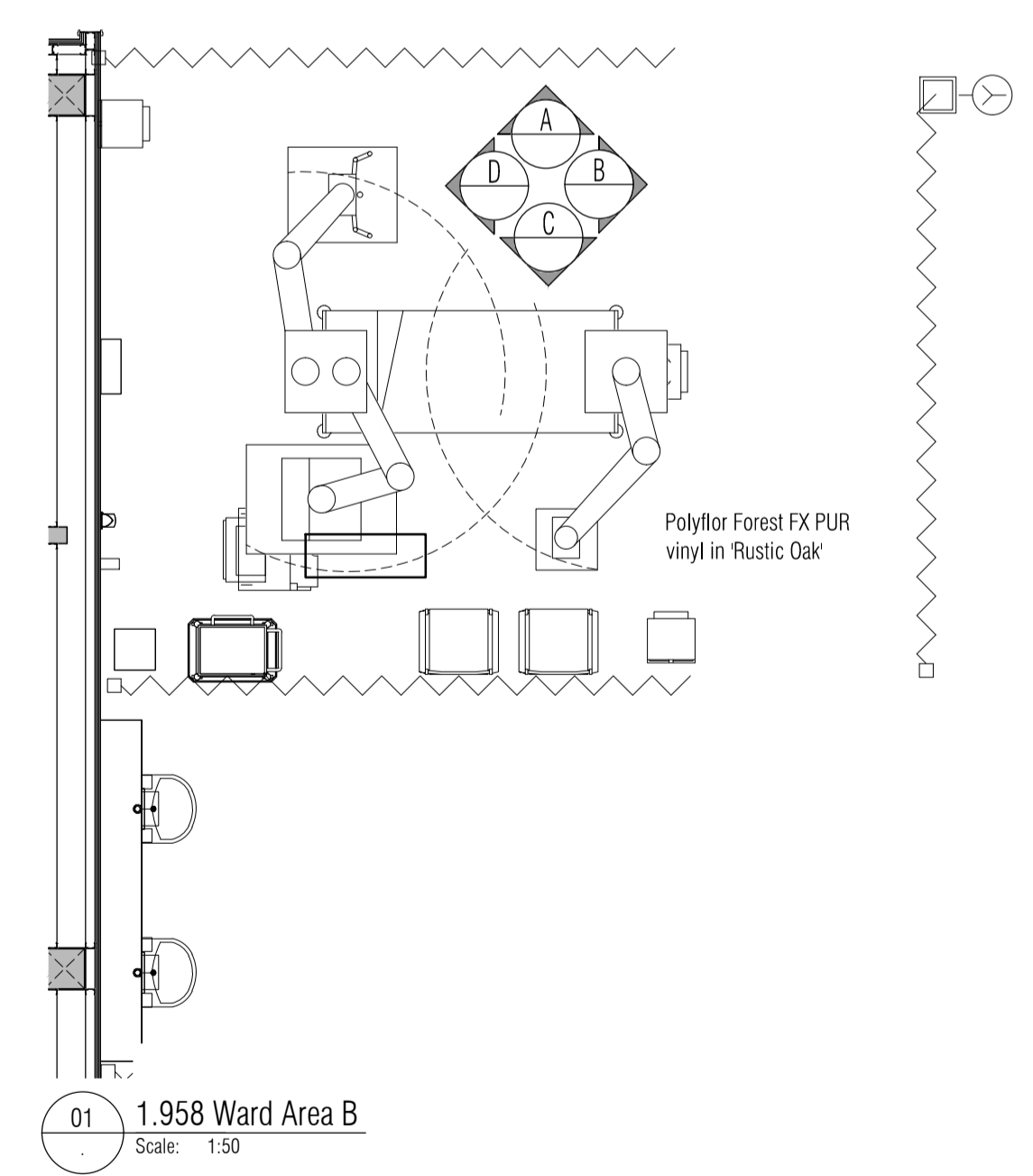
04 Elevation C  
Scale: 1:20



05 Elevation D  
Scale: 1:20



03 Elevation B  
Scale: 1:20



01 1.958 Ward Area B  
Scale: 1:50

ISSUED FOR APPROVAL

All details referenced in call outs supersede general arrangement or larger depictions.

Rev	Date	By	CHK	Comment
P2	12.06.20	RKC	AGC	Amended following client comments
P1	09.01.14	RKC	AGC	Preliminary Issue for Approval

**BRINGING IDEAS TO LIFE**

**FRANKHAM**

Frankham Consultancy Group Limited  
21 Perrywood Road  
Haywards Heath RH12 5TP  
t 01444 444900 f 01444 455642  
enquire@frankham.com  
www.frankham.com

Client  
[Redacted]

Project Title  
General Intensive Care Unit Extension  
St. James Wing  
St. Georges Hospital  
London

Drawing Title  
1.958  
Ward Area B  
Proposed Room Elevations

Drawn by: RKC	Scale: 1:20, 1:50@A1	Date: 05.12.13
Designed by: FCG	Checked by: MDK	Approved by: AGC

File Ref.: X:\FRANKHAM\2-38512171-02\38512171-02-01.dwg  
521717-A-336-295 - 2950/21/13/17 20.06.12-17-47-53

Drawing No.  
521717-A-336

Rev.  
12.06.20