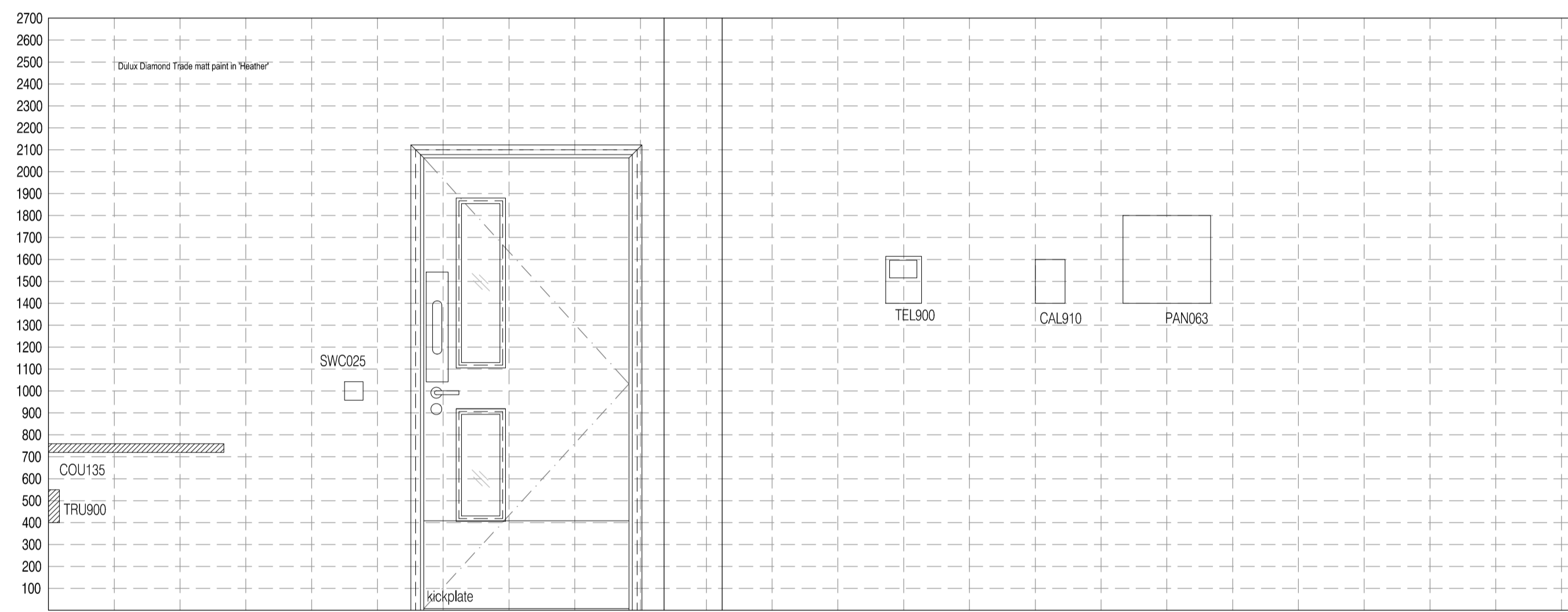
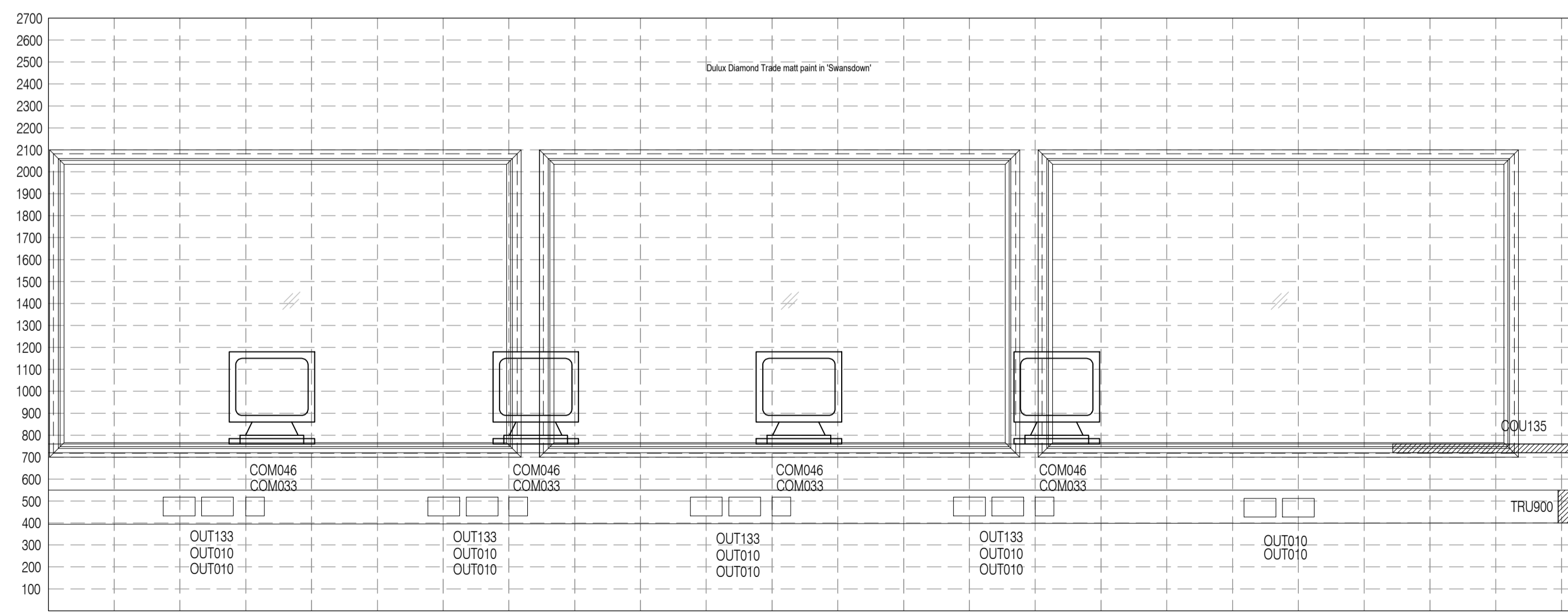


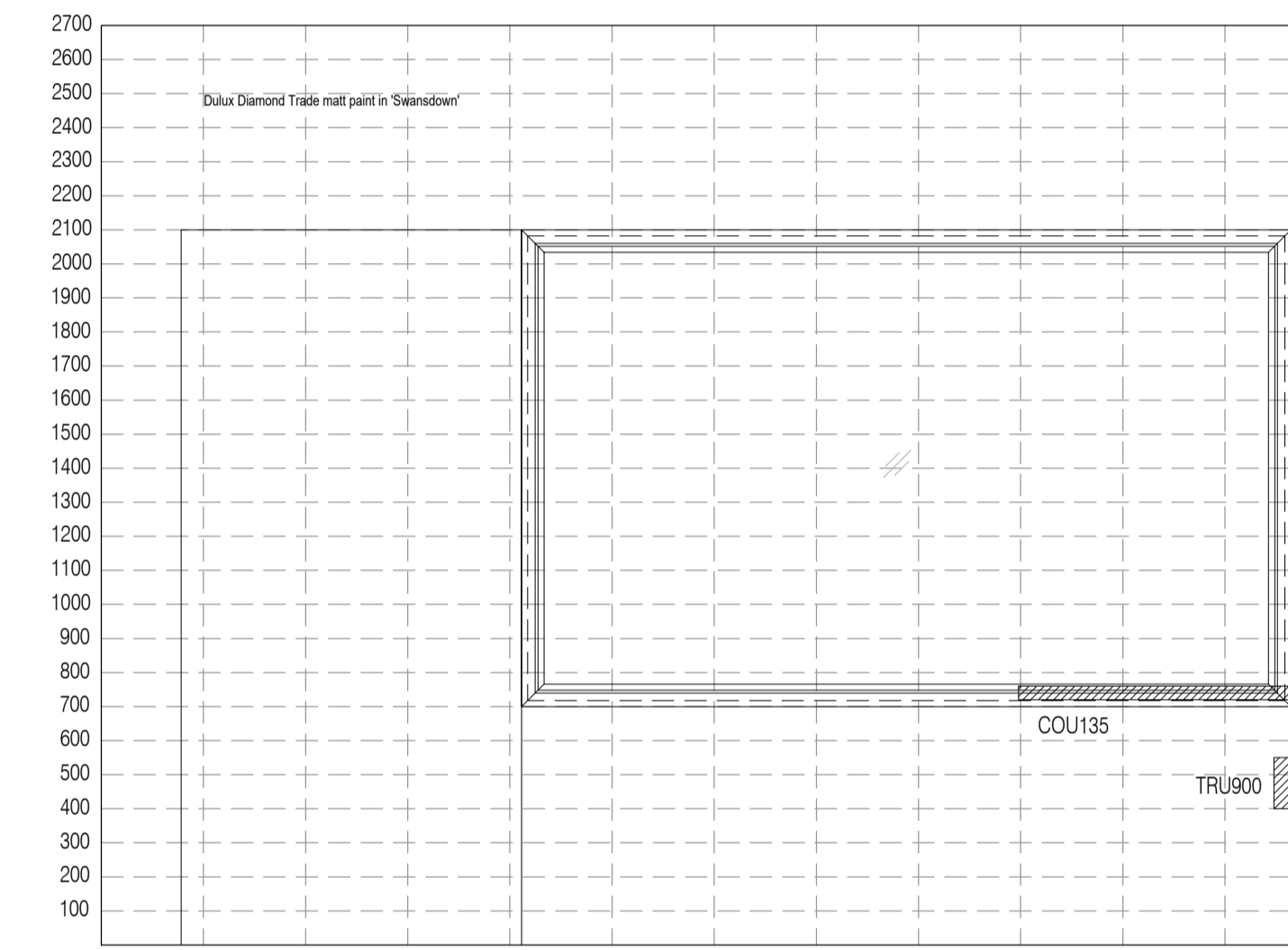
01 1.964 Comms Base
Scale: 1:50



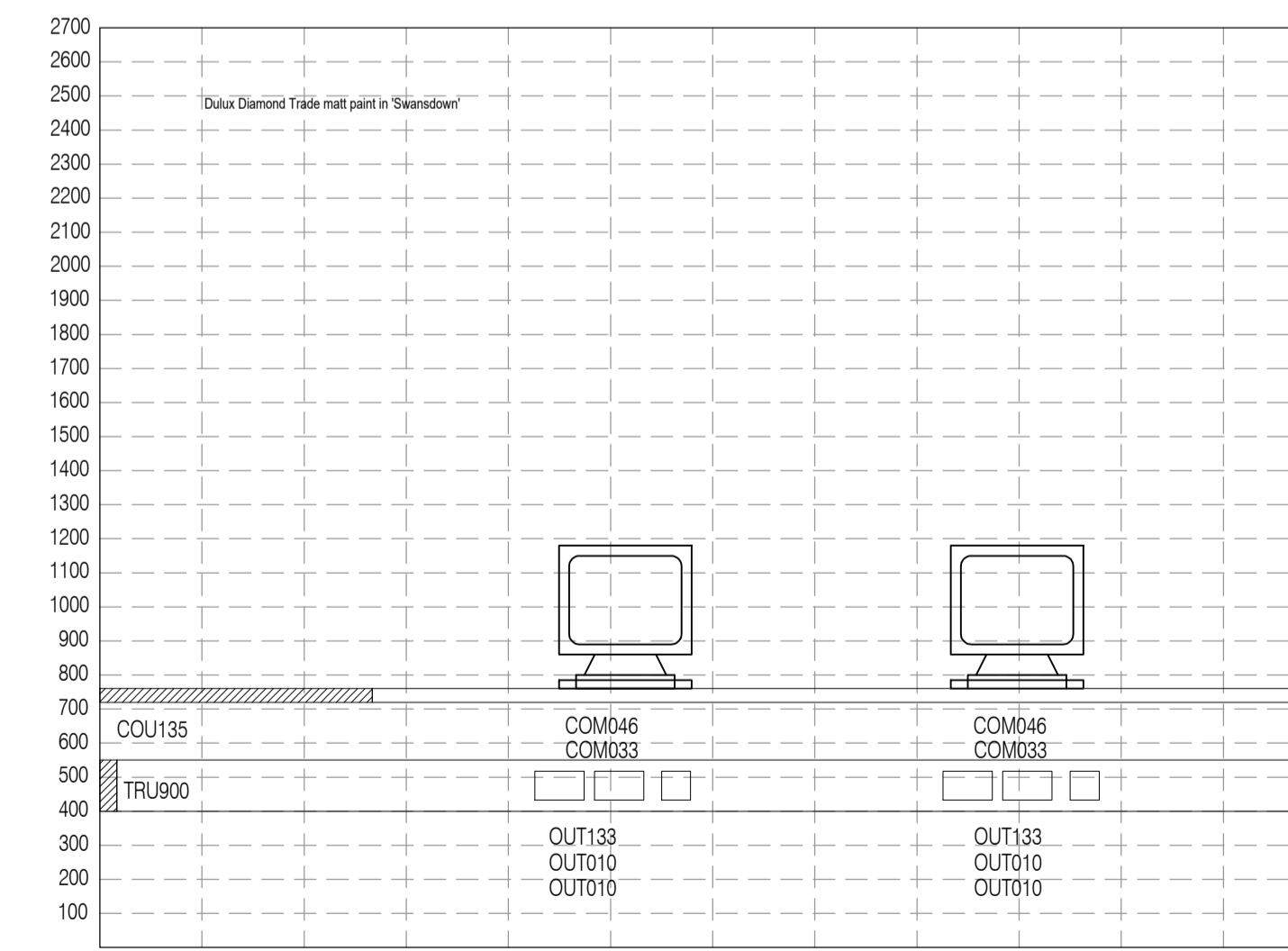
02 Elevation A
Scale: 1:20



04 Elevation C
Scale: 1:20

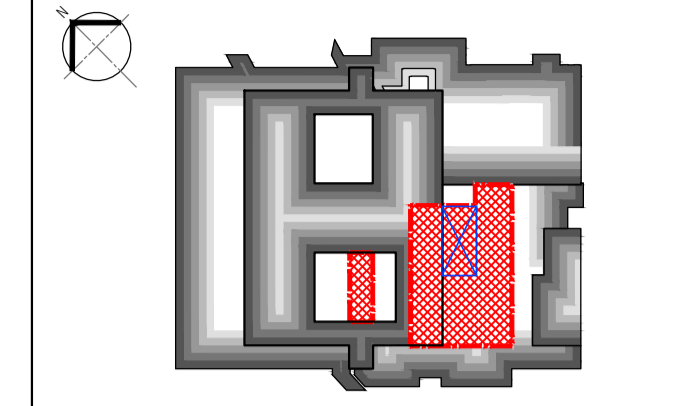


03 Elevation B
Scale: 1:20



05 Elevation D
Scale: 1:20

NOTES: Do not scale this drawing. All dimensions to be checked on site prior to commencement or manufacture.
Key Plan (nts)



ISSUED FOR APPROVAL

All details referenced in call outs supersede general arrangement or larger depictions.

| Rev | Date | By | CHK | Comment |
|-----|----------|-----|-----|-----------------------------------|
| P2 | 12.06.20 | RKC | AJM | Amended following client comments |
| P1 | 09.01.14 | RKC | AGC | Preliminary issue for Approval |

BRINGING IDEAS TO LIFE

FRANKHAM

Frankham Consultancy Group Limited
21 Pymms Road
Haywards Heath RH16 3TP
t 01444 444900 f 01444 455642
enquire@frankham.com
www.frankham.com

Client
St George's Healthcare NHS Trust

Project Title
General Intensive Care Unit Extension
St. James Wing
St. Georges Hospital
London

Drawing Title
1.964
Comms Base
Proposed Room Elevations

| | | |
|---|-------------------------|---------------------|
| Drawn by: RKC | Scale: 1:20, 1:50@A1 | Date: 05.12.13 |
| Designed by: FCG | Checked by: MDK | Approved by: AGC |
| File Ref.: X:\FRANKHAM\2-08612111\02\ARCH\030-REV1 521717-A-336-DWG - 20061217-49-43 | | |

| | |
|-----------------------------|------------------|
| Drawing No. 521717-A-338 | Rev. 12.06.20 |
|-----------------------------|------------------|