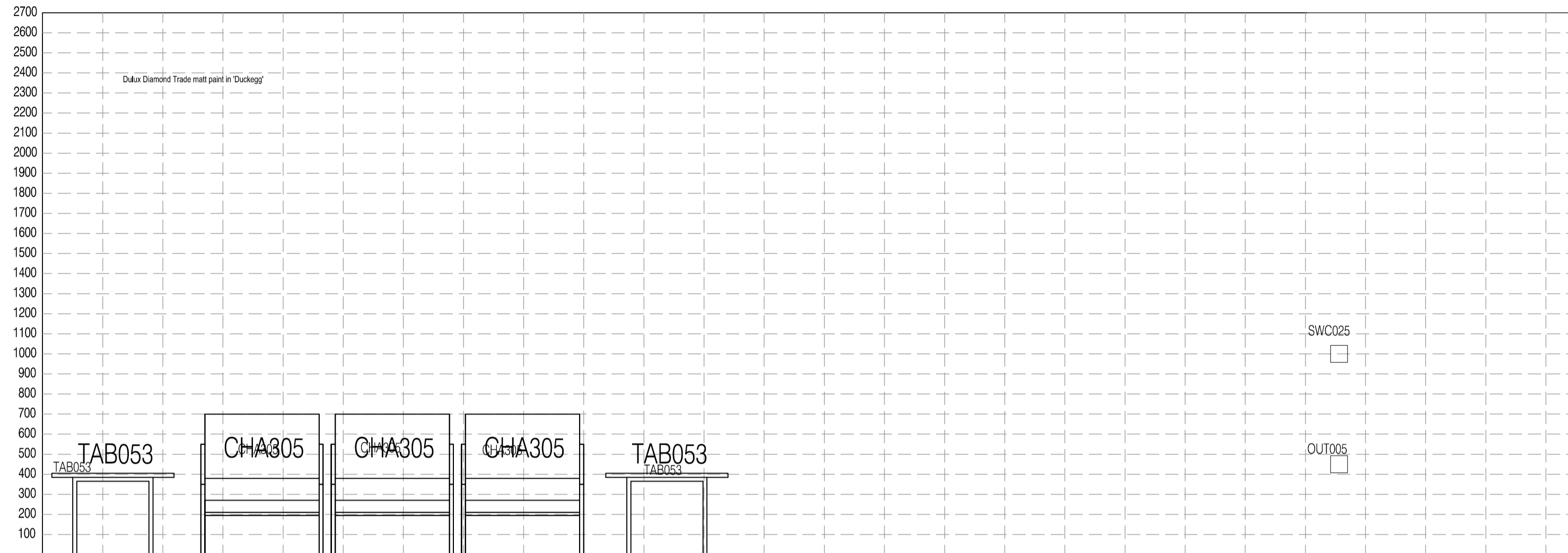
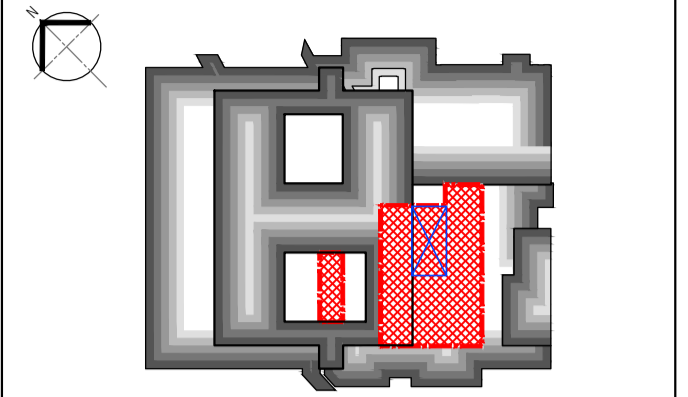
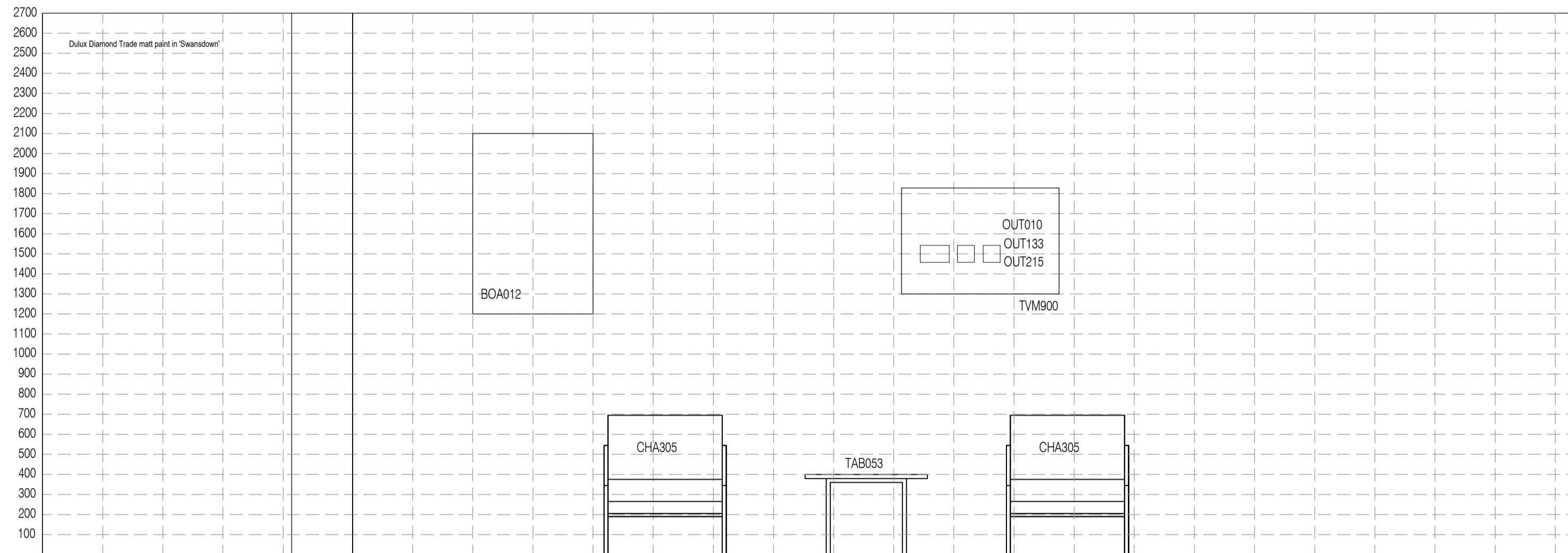


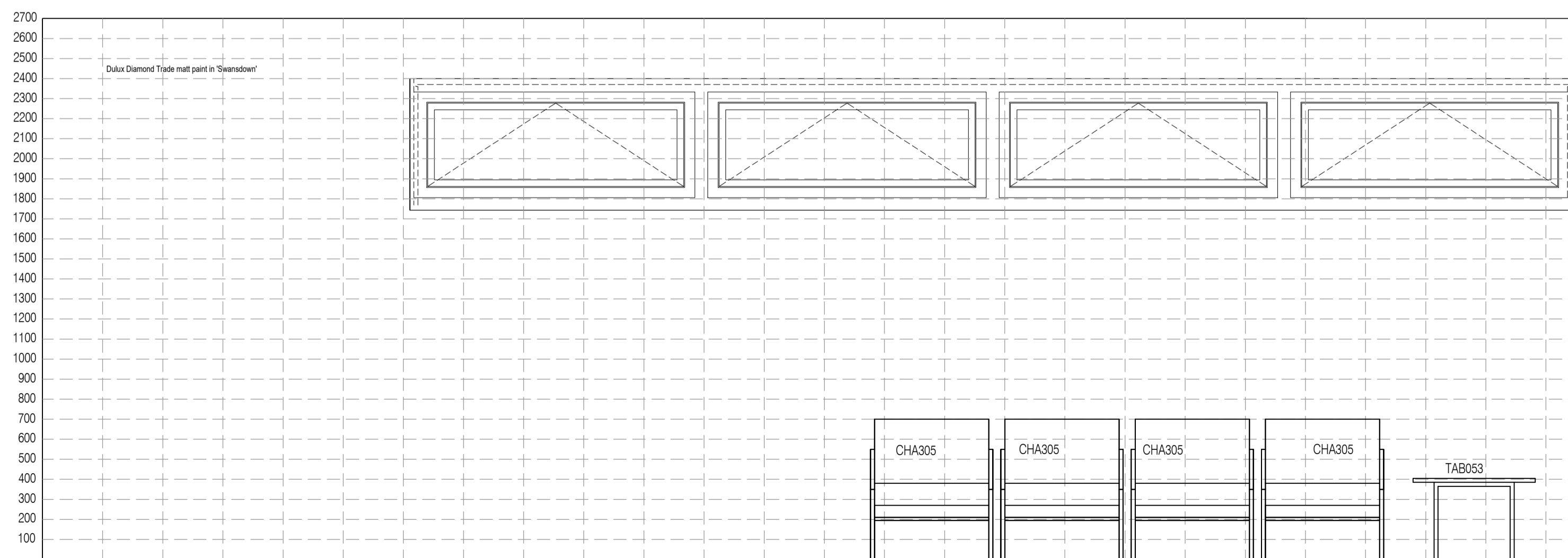
NOTES: Do not scale this drawing. All dimensions to be checked on site prior to commencement or manufacture.  
Key Plan (nts)



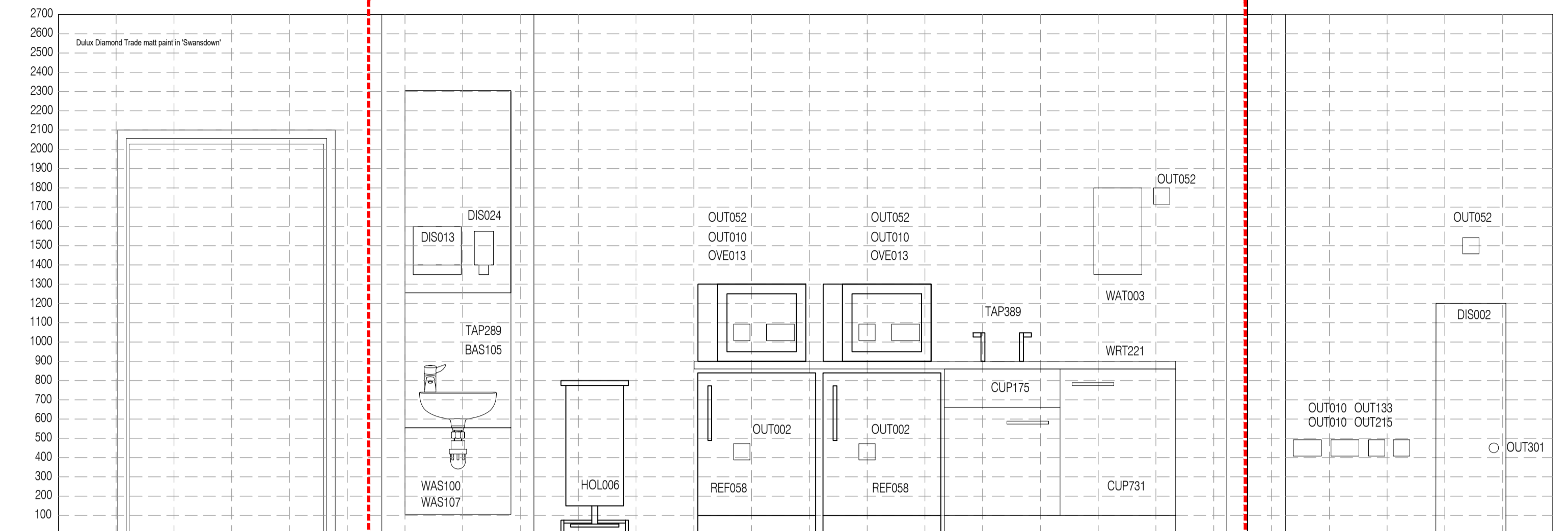
02 Elevation A  
Scale: 1:20



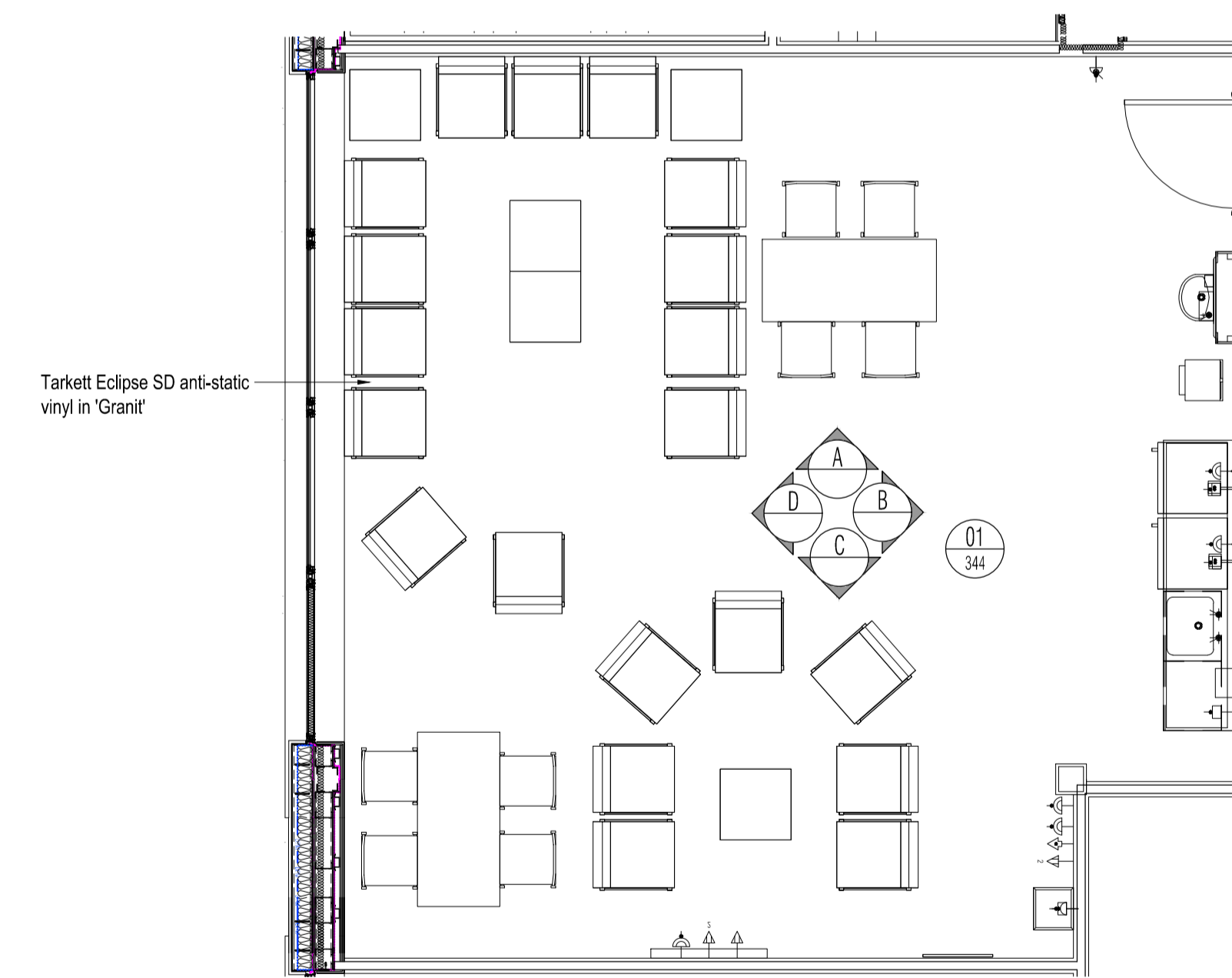
04 Elevation C  
Scale: 1:20



05 Elevation D  
Scale: 1:20



03 Elevation B  
Scale: 1:20



01 1.985 Staff Rest room  
Scale: 1:50

ISSUED FOR APPROVAL

All details referenced in call outs supersede general arrangement or larger depictions.

Rev	Date	By	CHK	Comment
P2	12.06.20	RKC	AJM	Amendments following client comments
P1	09.01.14	RKC	AGC	Preliminary Issue for Approval

BRINGING IDEAS TO LIFE

**FRANKHAM**

Frankham Consultancy Group Limited  
21 Parnmount Road  
Haywards Heath RH16 3TP  
t 01444 444900 f 01444 455642  
enquire@frankham.com  
www.frankham.com

Client  
**St George's Healthcare NHS Trust**

Project Title  
General Intensive Care Unit Extension  
St. James Wing  
St. Georges Hospital  
London

Drawing Title  
1.985  
Staff Rest  
Proposed Room Elevations

Drawn by: RKC	Scale: 1:20, 1:50@A1	Date: 05.12.13
Designed by: FCG	Checked by: MDK	Approved by: AGC

File Ref.: X:\FRANKHAM\2-2013\0111\02\04\03\030-05\521717-A-344-005 - 2013\12\13	20.06.12:17-54.18
Drawing No. 521717-A-344	Rev. 12.06.20