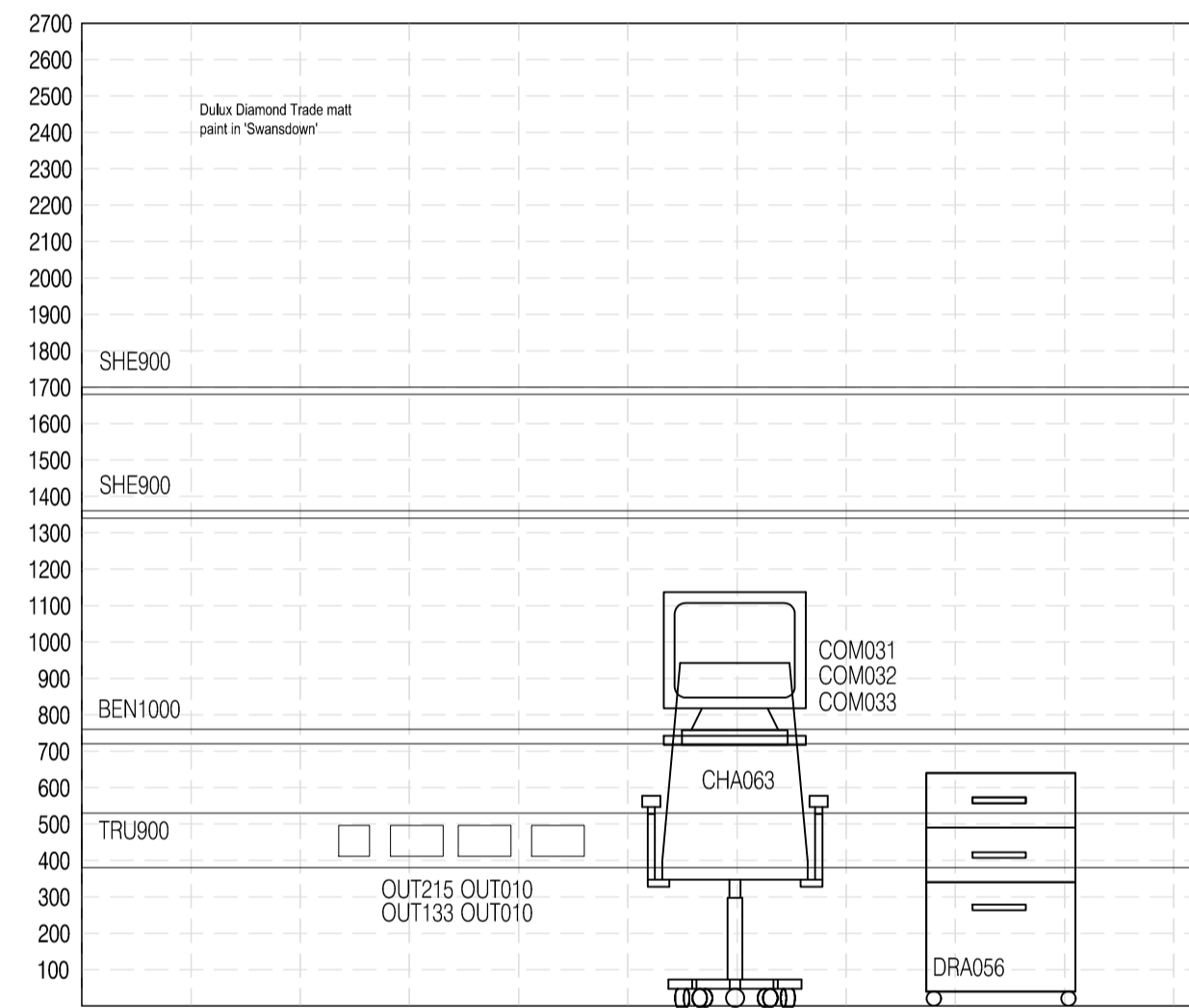
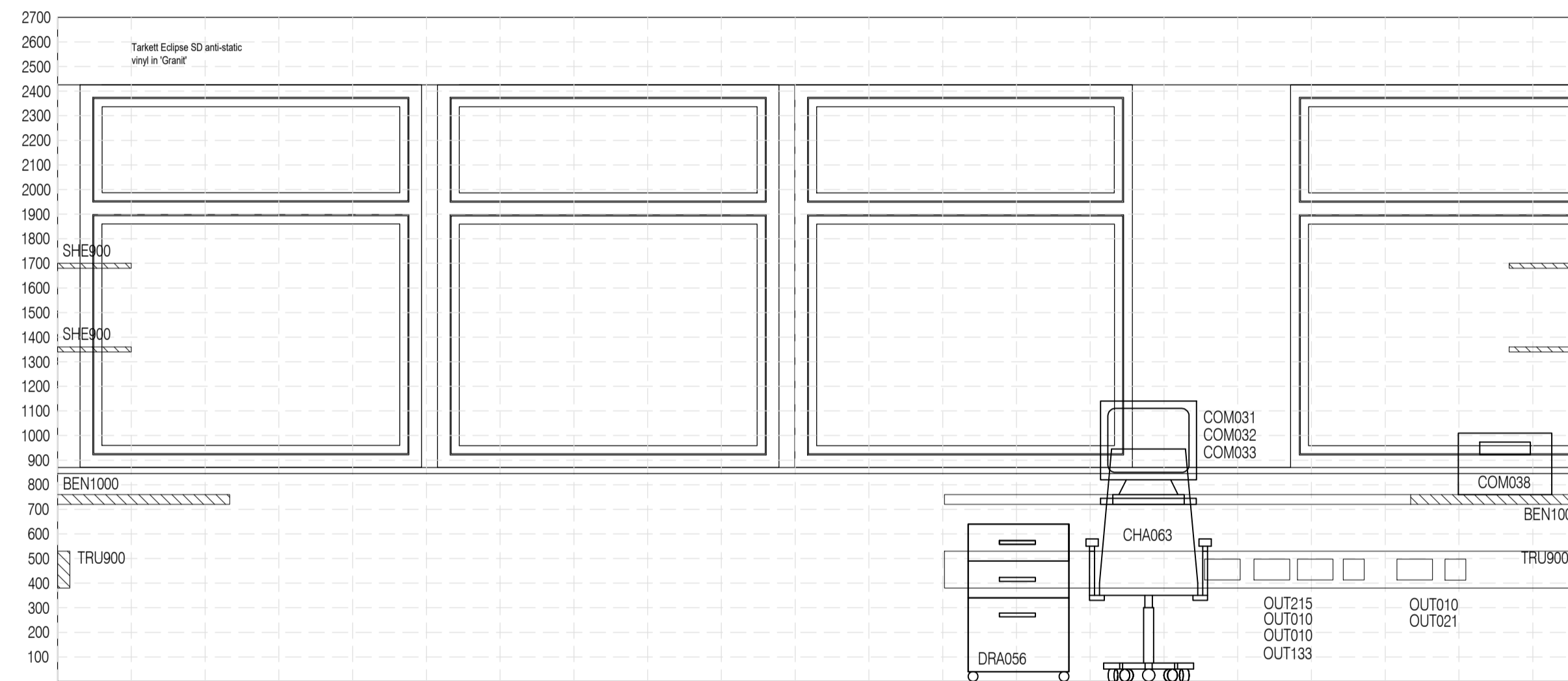


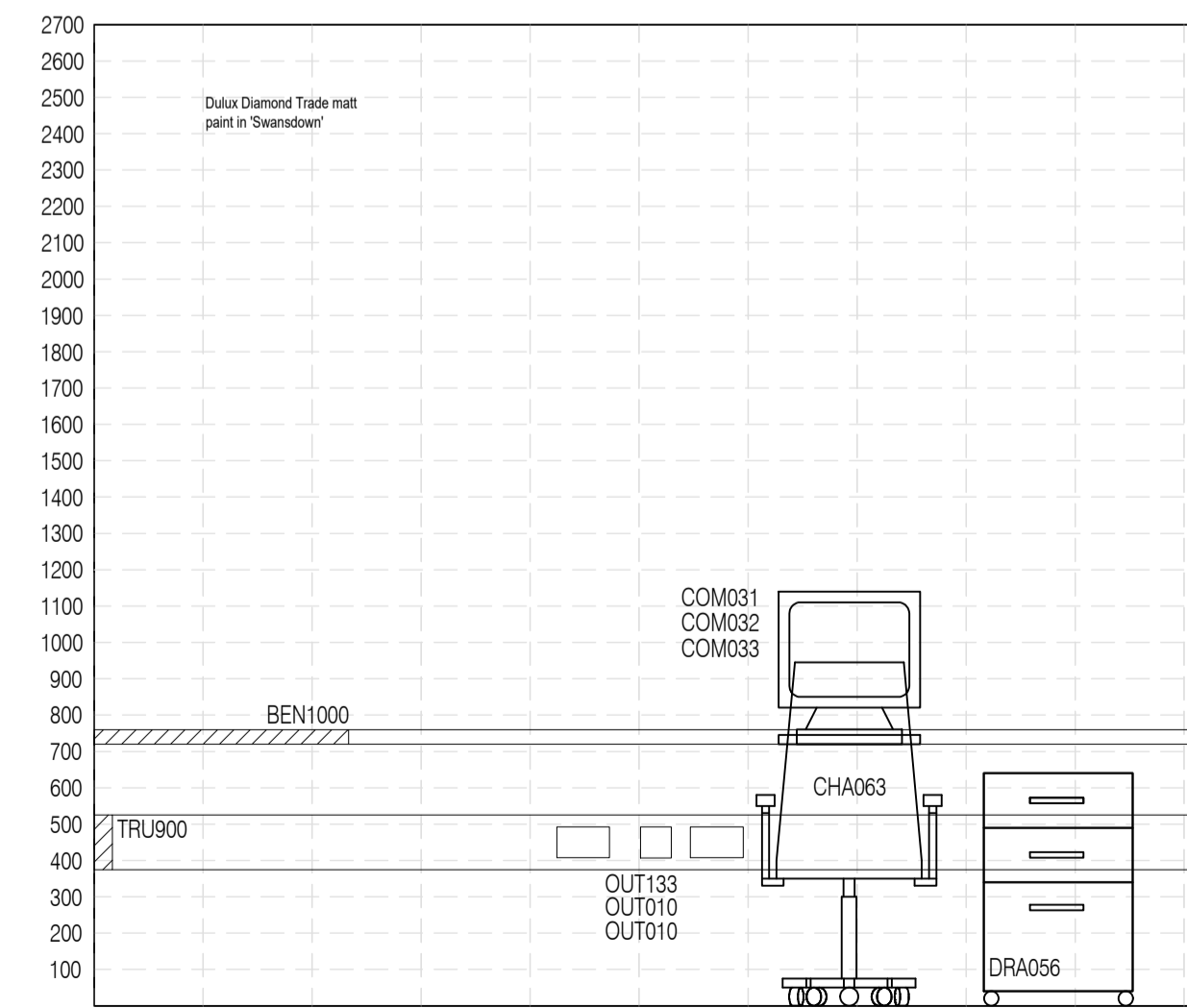
01 1.991 Office Plan
Scale: 1:20



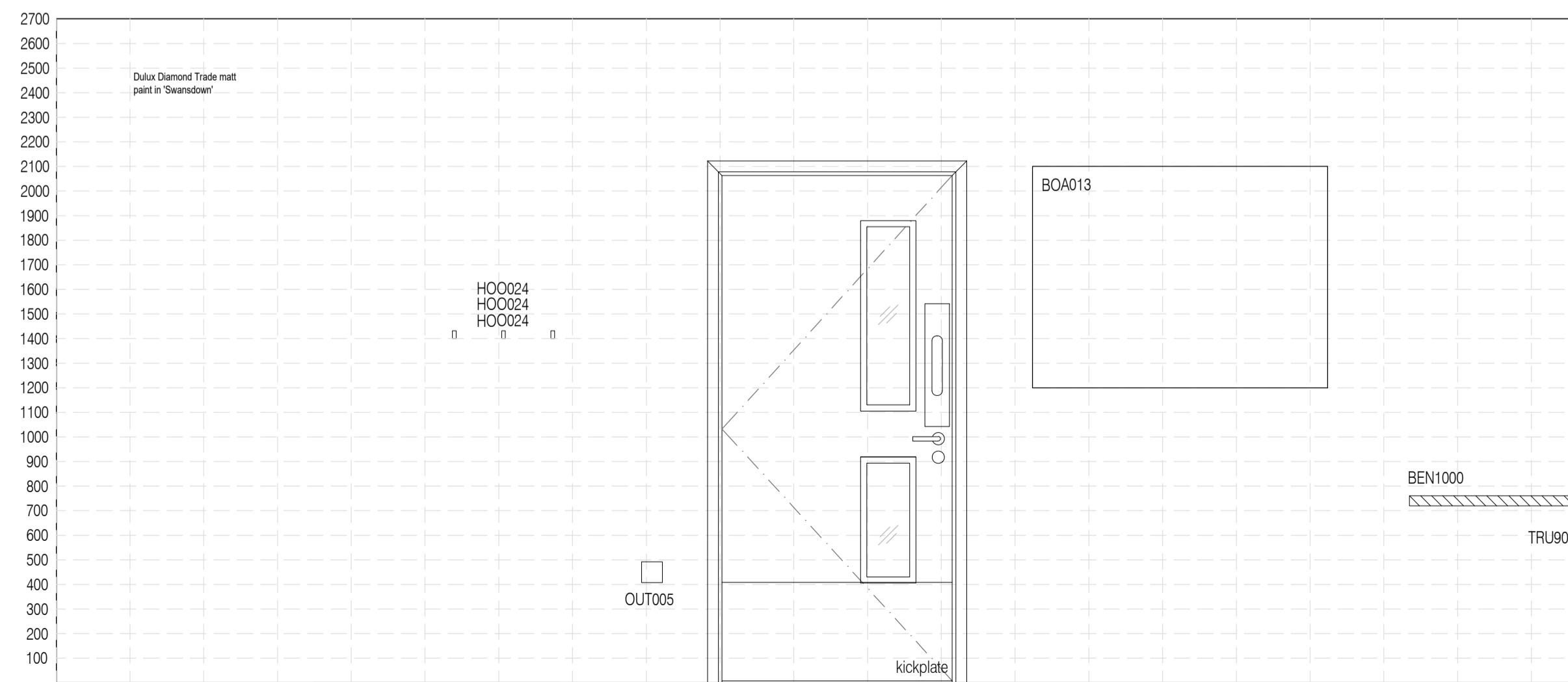
02 Elevation A
Scale: 1:20



03 Elevation B
Scale: 1:20

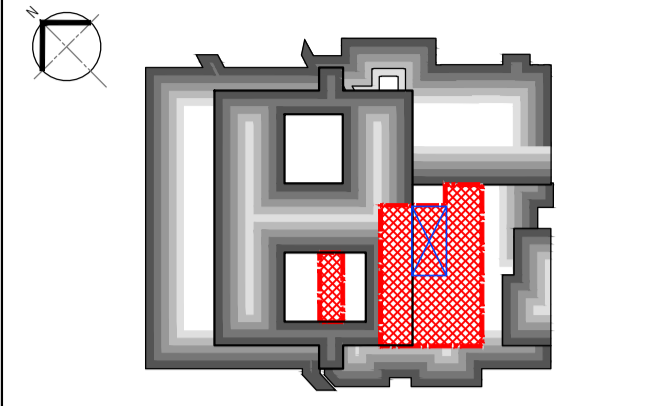


04 Elevation C
Scale: 1:20



05 Elevation D
Scale: 1:20

NOTES: Do not scale this drawing. All dimensions to be checked on site prior to commencement or manufacture.



APPROVAL ISSUE

All details referenced in call outs supersede general arrangement or larger depictions.

| Rev | Date | By | CHK | Comment |
|-----|----------|-----|-----|-----------------------------------|
| P2 | 12.06.20 | RKC | AJM | Amended following client comments |
| P1 | 09.01.14 | RKC | AGC | Preliminary issue for Approval |

BRINGING IDEAS TO LIFE

FRANKHAM

Frankham Consultancy Group Limited
21 Pymms Road
Haywards Heath RH16 3TP
t 01444 444000 f 01444 455642
enquiries@frankham.com
www.frankham.com

Client
St George's Healthcare NHS Trust

Project Title
General Intensive Care Unit Extension
St. James Wing
St. Georges Hospital
London

Drawing Title
1.991, 1.993, 1.994 & 1.995
Matrons, Admin and Audit,
Training and Development & Research Office
Proposed Room Elevations

| | | |
|---------------------|--------------------|---------------------|
| Drawn by: RKC | Scale: 1:20@A1 | Date: 05.12.13 |
| Designed by: FCG | Checked by: MDK | Approved by: AGC |

File Ref.: X:\FRANKHAM\2-2013\1111\02\ARCH\300-05.rvt 20.06.12:17:58:55

| | |
|-----------------------------|------------------|
| Drawing No. 521717-A-349 | Rev. 12.06.20 |
|-----------------------------|------------------|