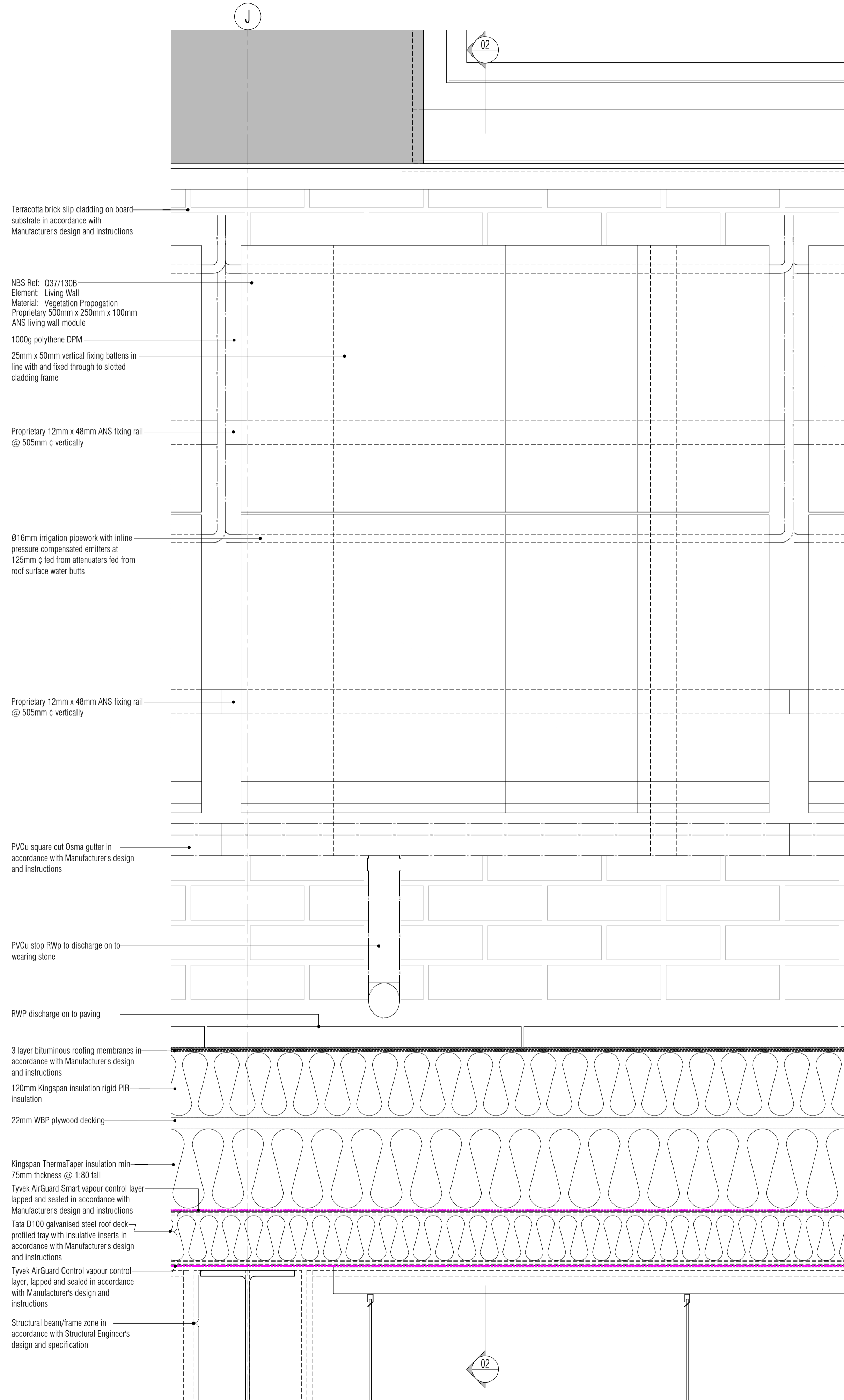
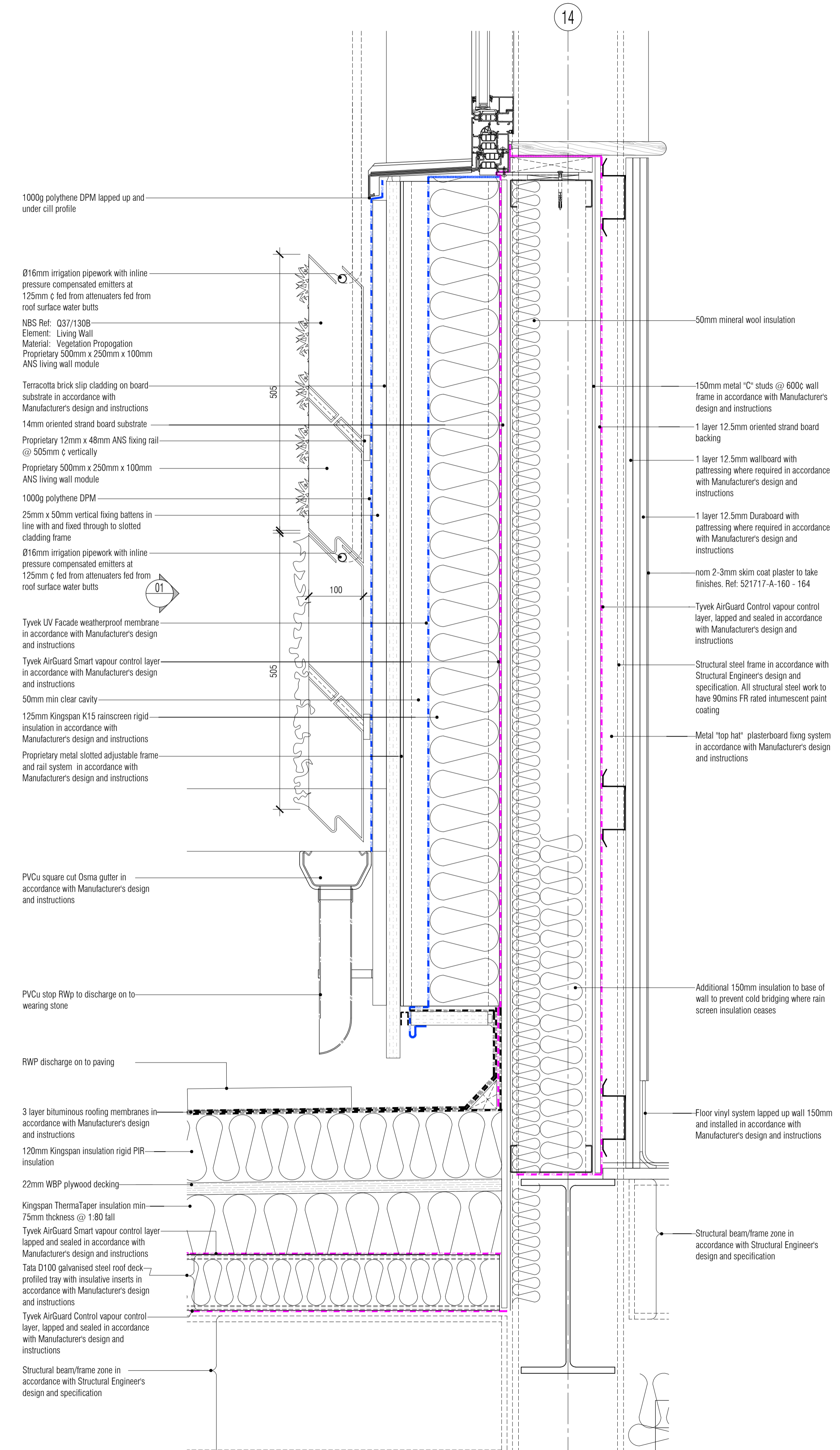


NB: All levels are approximate and are subject to further site investigation prior to construction. All discrepancies to be reported to FCG immediately



01 Proposed Elevation 03 Living Wall Partial Elevation
Scale: 1:5

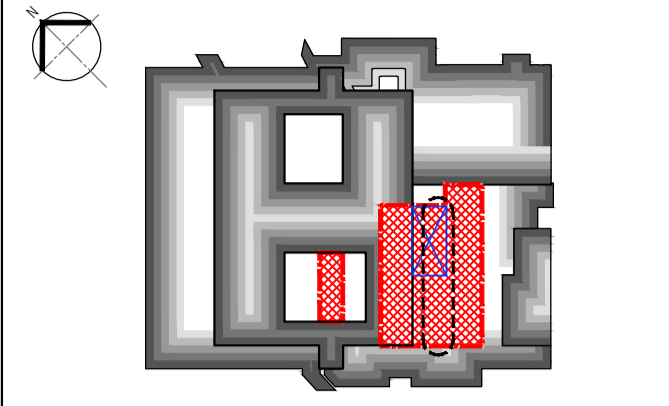
NB: All information based on supplied third party survey information. All discrepancies to be reported to FCG immediately upon discovery.



02 Proposed Section 01 03 Living Wall Sectional Detail
Scale: 1:5

All Mechanical & Electrical and Structural information shown indicative only. Please refer to Mechanical & Electrical and Structural documentation.

NOTES: Do not scale this drawing. All dimensions to be checked on site prior to commencement or manufacture. Key Plan (nts)



Rev	Date	By	CHK	Comment
P1	04.11.14	JM	AGC	Preliminary Issue for Information

PRELIMINARY ISSUE

All details referenced in call outs supercede general arrangement or larger depictions.

FRANKHAM

Frankham Consultancy Group Limited
 21 Perrymount Road
 Hayward's Heath RH16 3TP
 t 01444 444900 f 01444 455642
 enquiry@frankham.com
 www.frankham.com

BRINGING IDEAS TO LIFE

Client
St George's Healthcare NHS Trust

Project Title
 General Intensive Care Unit Extension
 St. James Wing
 St. Georges Hospital
 London

Drawing Title
 Proposed Living Wall
 Elevational and Sectional Details

Drawn by: RKC	Scale: 1:5@A1	Date: 19.02.14
Designed by: FCG	Checked by: MDK	Approved by: AGC
File Ref.: X:\FRANKHAM\2\08012111\0204RCH0300.DWG 107117-A-502-045 - 2009102017		20.06.15:15.09.19
Drawing No. 521717-A-502	Rev. P1	